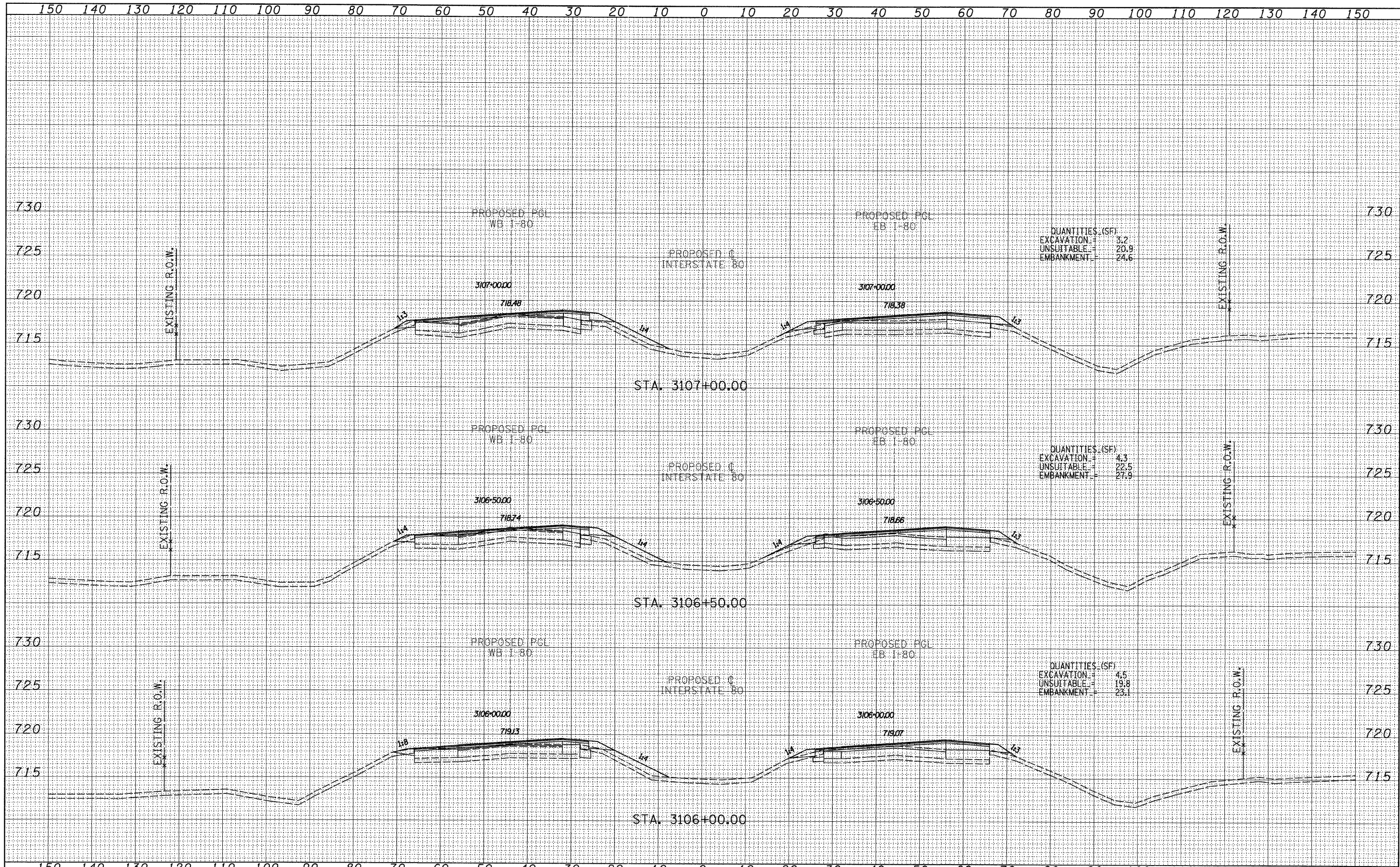


DATE	
BY	
FINAL SURVEY	
REVISIONS	
NOTE BOOK	
AREAS CHECKED	
NO.	

DATE	
BY	
ORIGINAL SURVEY	
REVISIONS	
NOTE BOOK	
AREAS CHECKED	
NO.	



QUANTITIES (SF)  
 EXCAVATION = 3.2  
 UNSUITABLE = 20.9  
 EMBANKMENT = 24.6

QUANTITIES (SF)  
 EXCAVATION = 4.3  
 UNSUITABLE = 22.5  
 EMBANKMENT = 27.9

QUANTITIES (SF)  
 EXCAVATION = 4.5  
 UNSUITABLE = 19.8  
 EMBANKMENT = 23.1

TYLIN INTERNATIONAL

USER NAME =	DESIGNED - JDF	REVISED -
PLOT SCALE =	DRAWN - JDF	REVISED -
PLOT DATE =	CHECKED - JPM	REVISED -
	DATE - 9/7/2011	REVISED -

STATE OF ILLINOIS  
 DEPARTMENT OF TRANSPORTATION

F.A.I. ROUTE 80 (I-80)  
 PROPOSED CROSS SECTIONS

SCALE: 1" = 10' SHEET NO. OF SHEETS STA. 3106+00.00 TO STA. 3107+00.00

F.A.I. RTE.	SECTION	COUNTY	TOTAL SHEETS	SHEET NO.
80	[06-5HBR-1, VBR(06-6)RS-3&I]	BUREAU	249	192
FED. ROAD DIST. NO.		ILLINOIS FED. AID PROJECT		
		CONTRACT NO. 66686		

P:\602429.1(1-80)\Road\602429.10\_A\D366686-shr-xssht.dgn