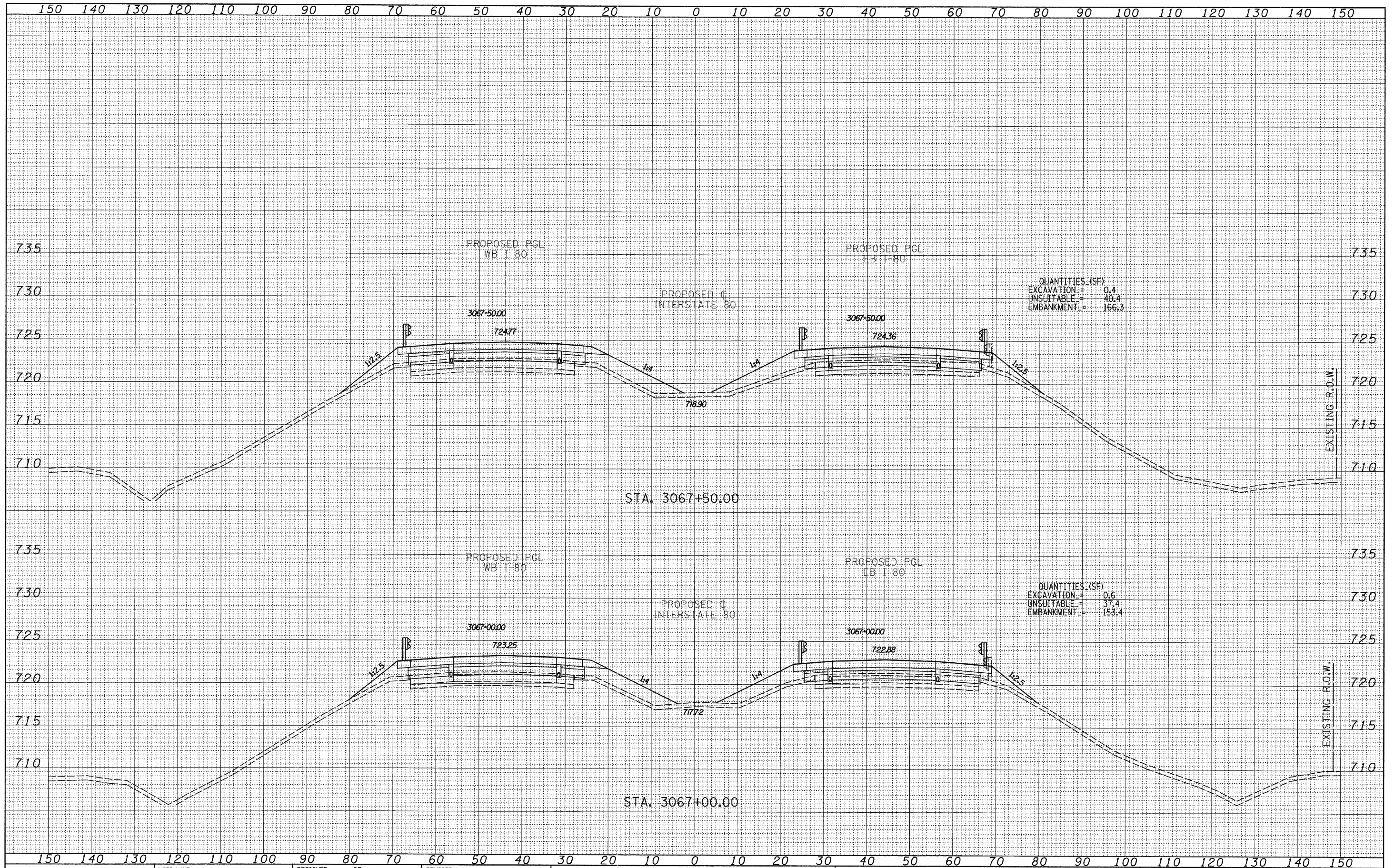


FINAL SURVEY	DATE
SURVEYED	BY
PLOTTED	
TEMPLATE	
NOTE BOOK	
AREAS CHECKED	
NO.	

ORIGINAL SURVEY	DATE
SURVEYED	BY
PLOTTED	
TEMPLATE	
NOTE BOOK	
AREAS CHECKED	
NO.	



QUANTITIES (SF)  
 EXCAVATION = 0.4  
 UNSUITABLE = 40.4  
 EMBANKMENT = 166.3

QUANTITIES (SF)  
 EXCAVATION = 0.6  
 UNSUITABLE = 37.4  
 EMBANKMENT = 153.4

**TYLIN INTERNATIONAL**

USER NAME =	DESIGNED - JDF	REVISED -
DESIGNED - JDF	DRAWN - JDF	REVISED -
DRAWN - JDF	CHECKED - JPM	REVISED -
CHECKED - JPM	DATE - 9/7/2011	REVISED -
DATE - 9/7/2011		

**STATE OF ILLINOIS  
 DEPARTMENT OF TRANSPORTATION**

**F.A.I. ROUTE 80 (I-80)  
 PROPOSED CROSS SECTIONS**

SCALE: 1" = 10' VERT. SHEET NO. OF SHEETS STA. 3067+00.00 TO STA. 3067+50.00

F.A.I. RTE.	SECTION	COUNTY	TOTAL SHEETS	SHEET NO.
80	106-5HBR-1.VBR106-6JRS-3&I	BUREAU	249	23
CONTRACT NO. 66686				

P:\602429.1(I-80)\Road\602429.10\_A\0366686-sht-xssht.dgn