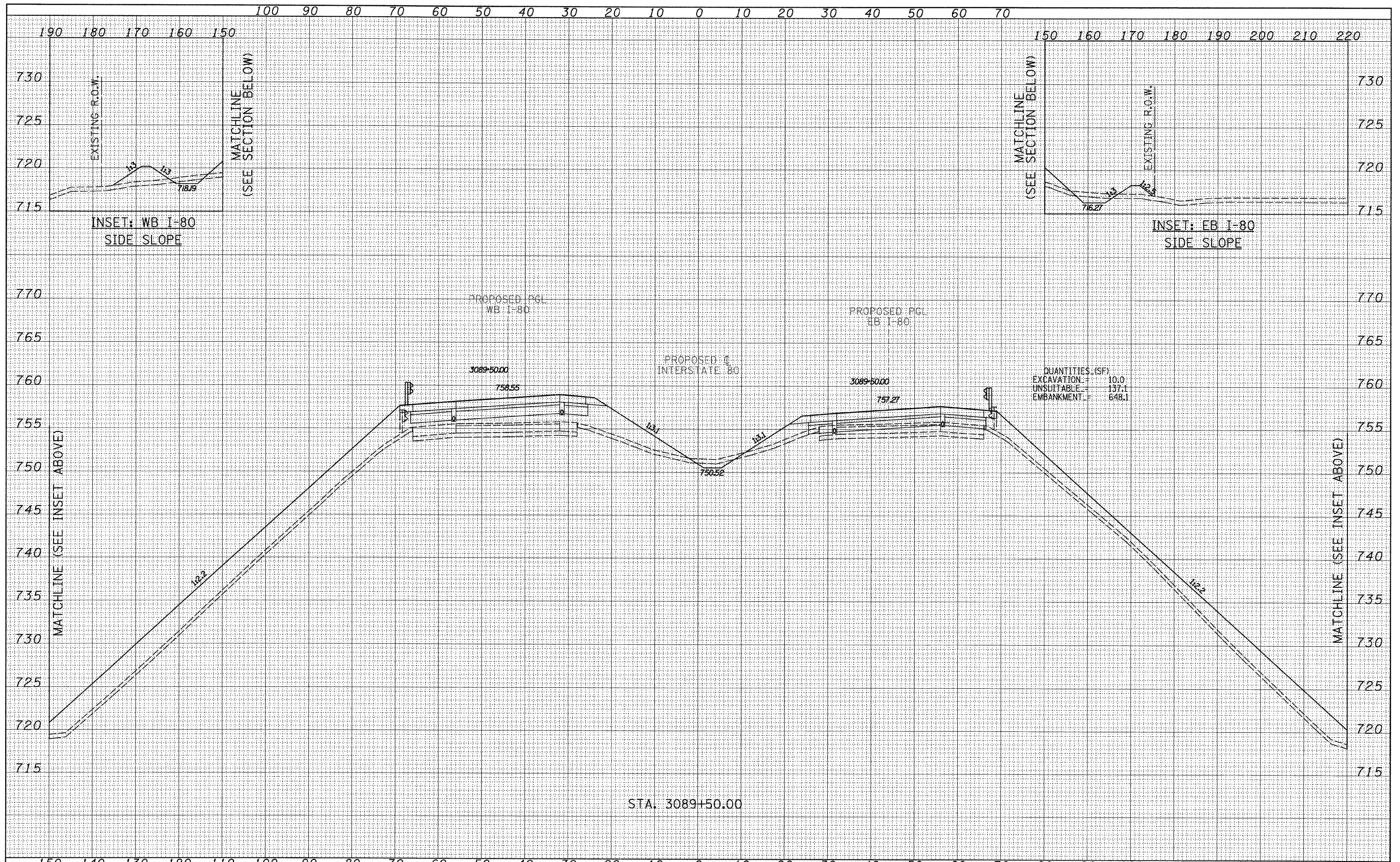


DATE	
BY	
FINAL SURVEY	SURVEYED
NOTE BOOK	PLOTTED
NO.	TEMPLATE
	AREAS CHECKED

DATE	
BY	
ORIGINAL SURVEY	SURVEYED
NOTE BOOK	PLOTTED
NO.	TEMPLATE
	AREAS CHECKED



<b>TYLIN INTERNATIONAL</b> USER NAME = PLOT SCALE = PLOT DATE =	DESIGNED - JDF DRAWN - JDF CHECKED - JPM DATE - 9/7/2011	REVISED - REVISED - REVISED - REVISED -	<b>STATE OF ILLINOIS</b> <b>DEPARTMENT OF TRANSPORTATION</b>	<b>F.A.I. ROUTE 80 (I-80)</b> <b>PROPOSED CROSS SECTIONS</b>		F.A.I. RTE. 80 SECTION [06-5HBR-1.VBR(06-6)RS-3&I] COUNTY BUREAU TOTAL SHEETS 249 SHEET NO. 740 CONTRACT NO. 66686
	SCALE: 1" = 10' H SHEET NO. OF SHEETS STA. 3089+50.00 TO STA. 3089+50.00	QUANTITIES (SF): EXCAVATION = 10.0 UNSUITABLE = 137.1 EMBANKMENT = 648.1		FED. ROAD DIST. NO. ILLINOIS FED. AID PROJECT		

P:\602429.1(I-80)\Road\602429.10\_A\366686-sht-xsht.dgn