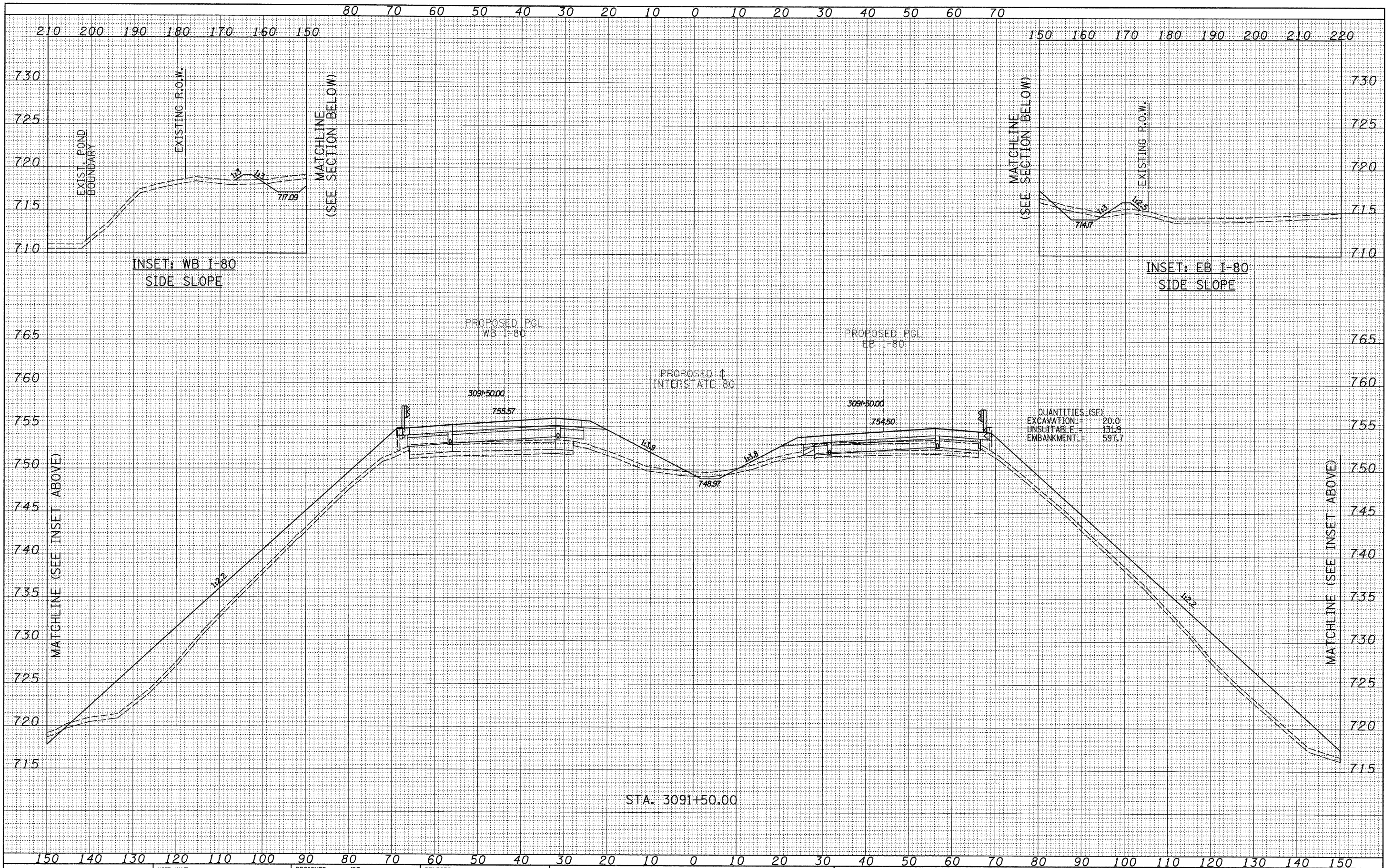


DATE	
BY	
FINAL SURVEY	SURVEYED
NOTE BOOK	PLOTTED
NO.	TEMPLATE
	AREAS CHECKED

DATE	
BY	
ORIGINAL SURVEY	SURVEYED
NOTE BOOK	PLOTTED
NO.	TEMPLATE
	AREAS CHECKED



TYLIN INTERNATIONAL

USER NAME =	DESIGNED - JDF	REVISED -
	DRAWN - JDF	REVISED -
PLOT SCALE =	CHECKED - JPM	REVISED -
PLOT DATE =	DATE - 9/7/2011	REVISED -

**STATE OF ILLINOIS
DEPARTMENT OF TRANSPORTATION**

**F.A.I. ROUTE 80 (I-80)
PROPOSED CROSS SECTIONS**

SCALE: 1" = 10' H

SHEET NO. OF SHEETS STA. 3091+50.00 TO STA. 3091+50.00

F.A.I. RTE.	SECTION	COUNTY	TOTAL SHEETS	SHEET NO.
80	[06-5HBR-1.VBR](06-6)RS-3&1	BUREAU	249	244
FED. ROAD DIST. NO. [ILLINOIS] FED. AID PROJECT			CONTRACT NO. 66686	

P:\602429\1(1-80)\Road\602429\10_A\366686-sht-xssht.dgn