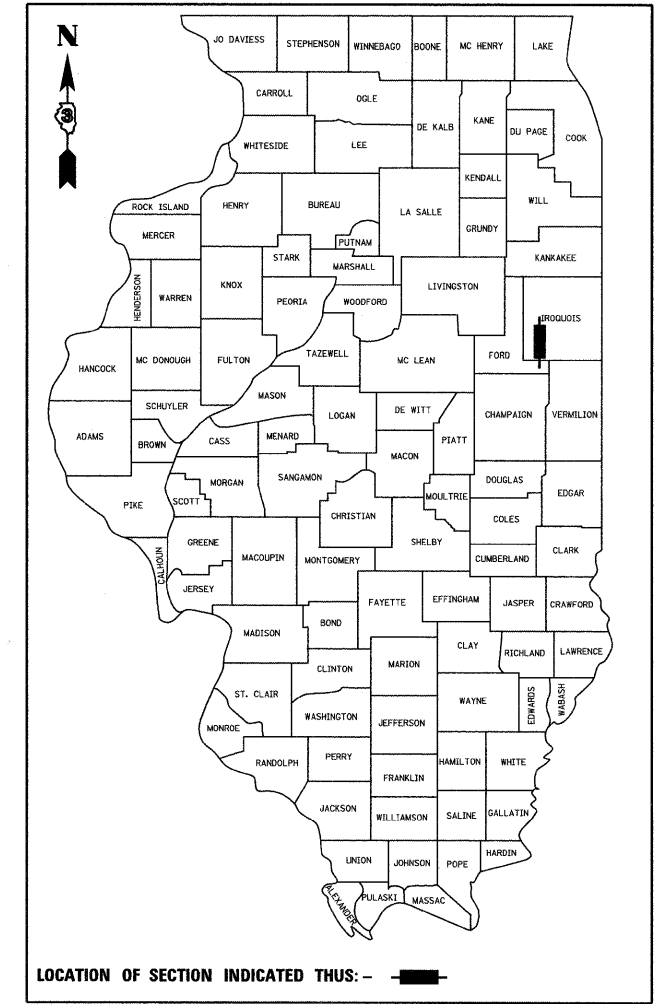


F.A.I. RTE.	SECTION	COUNTY	TOTAL SHEETS	SHEET NO.
57	(38-8) BR & BR-1	IROQUOIS	73	1
FED. ROAD DIST. NO.		ILLINOIS	CONTRACT NO. 66948	

D-93-023-11



LOCATION OF SECTION INDICATED THUS: -

**FUNCTIONAL CLASSIFICATION**

**INTERSTATE (RURAL)**  
**F.A.I. ROUTE 57 (I-57)**  
**2012 ADT = 17,800**  
**P.V. = 72.0% S.U. = 6.0% M.U. = 22.0%**

STATE OF ILLINOIS  
DEPARTMENT OF TRANSPORTATION  
DIVISION OF HIGHWAYS

SUBMITTED Aug 25 2011  
Eric S. Threlkeld  
DEPUTY DIRECTOR OF HIGHWAYS, REGION ENGINEER

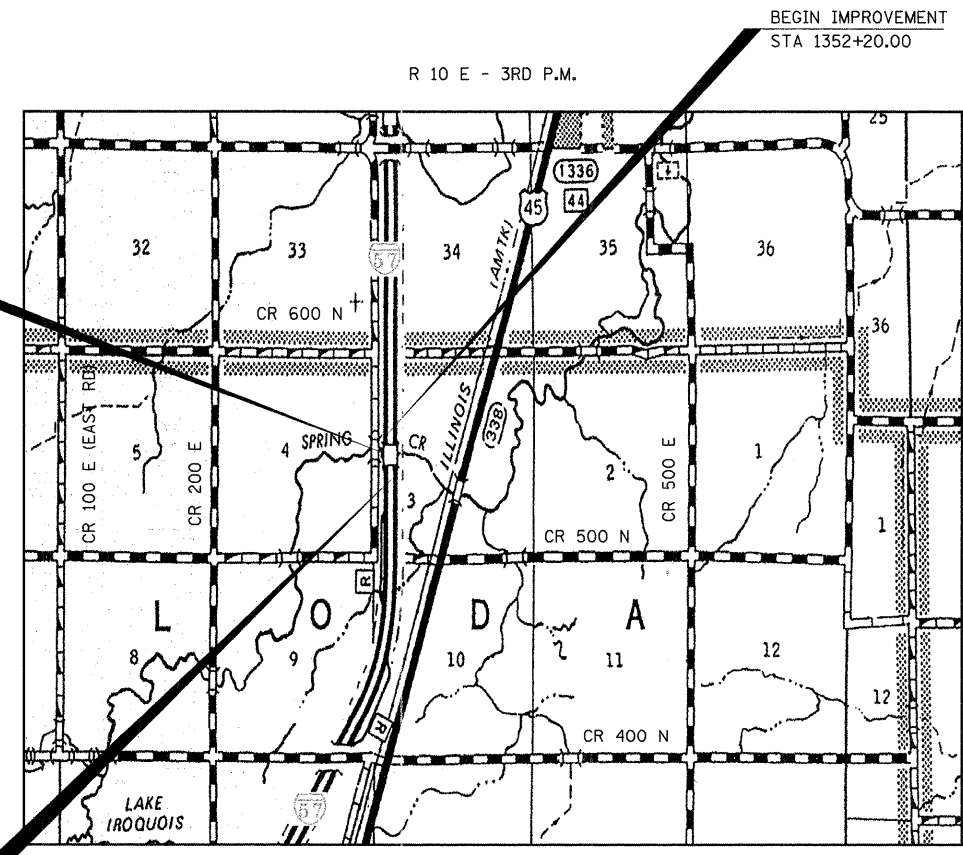
October 14 2011  
Scott E. Stitt P.E.  
acting ENGINEER OF DESIGN AND ENVIRONMENT

October 14 2011  
Christine M. Rosola  
DIRECTOR OF HIGHWAYS, CHIEF ENGINEER

STATE OF ILLINOIS  
DEPARTMENT OF TRANSPORTATION  
DIVISION OF HIGHWAYS  
**PROPOSED  
HIGHWAY PLANS**

**F.A.I. ROUTE 57 (I-57)**  
**SECTION (38-8) BR & BR-1**  
**PROJECT: ACIM-057-6(191)269**  
**BRIDGE REPLACEMENT**  
**IROQUOIS COUNTY**

**C-93-028-11**  
**I-57 OVER SPRING CREEK**  
**2.5 MILES SOUTH OF THE BUCKLEY INTERCHANGE**



STA 1357+52.00  
REMOVAL AND REPLACEMENT OF THE  
EXISTING STRUCTURES OVER SPRING CREEK  
EXISTING S.N. 038-0147 (SB) & 038-0148 (NB)  
PROPOSED S.N. 038-0222 (SB) 038-0223 (NB)  
LENGTH = 116 FT.

END IMPROVEMENT  
STA 1362+80.00

**LOCATION MAP**  
NOT TO SCALE

GROSS LENGTH = 1060 FT. = 0.201 MI.  
NET LENGTH = 1060 FT. = 0.201 MI.

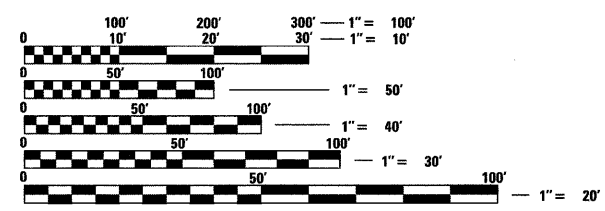
**INDEX OF SHEETS**

- 1 COVER SHEET
- 2 GENERAL NOTES & COMMITMENTS
- 3-4 SUMMARY OF QUANTITIES
- 5 TYPICAL SECTIONS
- 6-7 SCHEDULE OF QUANTITIES
- 8 TIE POINTS
- 9-11 PLAN AND PROFILE
- 12-15 MAINTENANCE OF TRAFFIC
- 16-56 BRIDGE PLANS
- 57-58 ROADWAY DETAILS
- 59-73 CROSS SECTIONS

**HIGHWAY STANDARDS**

- 000001-06 STANDARD SYMBOLS, ABBREVIATIONS AND PATTERNS
- 001001-02 AREAS OF REINFORCEMENT BARS
- 001006 DECIMAL OF AN INCH AND OF A FOOT
- 280001-05 TEMPORARY EROSION CONTROL SYSTEMS
- 420001-07 PAVEMENT JOINTS
- 420401-08 BRIDGE APPROACH PAVEMENT CONNECTOR
- 421001-02 BAR REINFORCEMENT FOR CRC PAVEMENT
- 482001-02 HMA SHOULDER ADJACENT TO FLEXIBLE PAVEMENT
- 482011-03 HMA SHLD. STRIPS / SHLDS. WITH RESURFACING OR WIDENING AND RESURFACING PROJECTS
- 515001-03 NAME PLATE FOR BRIDGES
- 601101-01 CONCRETE HEADWALL FOR PIPE DRAIN
- 630001-09 STEEL PLATE BEAM GUARDRAIL
- 630201-06 PCC / HMA STABILIZATION AT STEEL PLATE BEAM GUARDRAIL
- 630301-05 SHOULDER WIDENING FOR TYPE I (SPECIAL) GUARDRAIL TERMINALS
- 631031-09 TRAFFIC BARRIER TERMINAL, TYPE 6
- 635001-01 DELINEATORS
- 635006-03 REFLECTOR AND TERMINAL MARKER PLACEMENT
- 635011-02 REFLECTOR MARKER AND MOUNTING DETAILS
- 642001-01 SHOULDER RUMBLE STRIPS
- 665001-02 WOVEN WIRE FENCE
- 701101-02 OFF-RD OPERATIONS, MULTILANE 15' (4.5m) TO 24" (600mm) FROM PAVEMENT EDGE
- 701106-02 OFF-RD OPERATIONS, MULTILANE MORE THAN 15' (4.5m) AWAY
- 701401-06 LANE CLOSURE, FREEWAY / EXPRESSWAY
- 701402-08 LANE CLOSURE, FREEWAY / EXPRESSWAY, WITH BARRIER
- 701406-06 LANE CLOSURE, FREEWAY / EXPRESSWAY, DAY OPERATIONS ONLY
- 701421-03 LANE CLOSURE, MULTILANE, DAY OPERATIONS ONLY, FOR SPEEDS ≥ 45 MPH TO 55
- 701901-01 TRAFFIC CONTROL DEVICES
- 704001-06 TEMPORARY CONCRETE BARRIER
- 720011-01 METAL POSTS FOR SIGNS, MARKERS, AND DELINEATORS
- 780001-02 TYPICAL PAVEMENT MARKINGS
- 781001-03 TYPICAL APPLICATIONS RAISED REFLECTIVE PAVEMENT MARKERS

MICROFILMED \_\_\_\_\_  
REEL NUMBER \_\_\_\_\_  
AWARDED \_\_\_\_\_  
RESIDENT ENGINEER \_\_\_\_\_  
AS BUILT CHANGES WERE MADE  
ON THE FOLLOWING SHEETS \_\_\_\_\_



FULL SIZE PLANS HAVE BEEN PREPARED USING STANDARD  
ENGINEERING SCALES. REDUCED SIZED PLANS WILL NOT  
CONFORM TO STANDARD SCALES. IN MAKING MEASUREMENTS  
ON REDUCED PLANS, THE ABOVE SCALES MAY BE USED.

J.U.L.I.E.  
JOINT UTILITY LOCATION INFORMATION FOR EXCAVATION  
1-800-892-0123  
OR 811

PROJECT ENGINEER: JOE KANNEL, P.E.  
UNIT CHIEF: MICHELE LINDEMANN, P.E.

DISTRICT 3 NO. (815) 434-6131

CONTRACT NO. 66948

**benesch**  
engineers · scientists · planners  
Alfred Benesch & Company  
205 North Michigan Avenue, Suite 2400  
Chicago, Illinois 60601  
312-565-0450  
Job No. 3938.08/09

**PRINTED BY THE AUTHORITY  
OF THE STATE OF ILLINOIS**