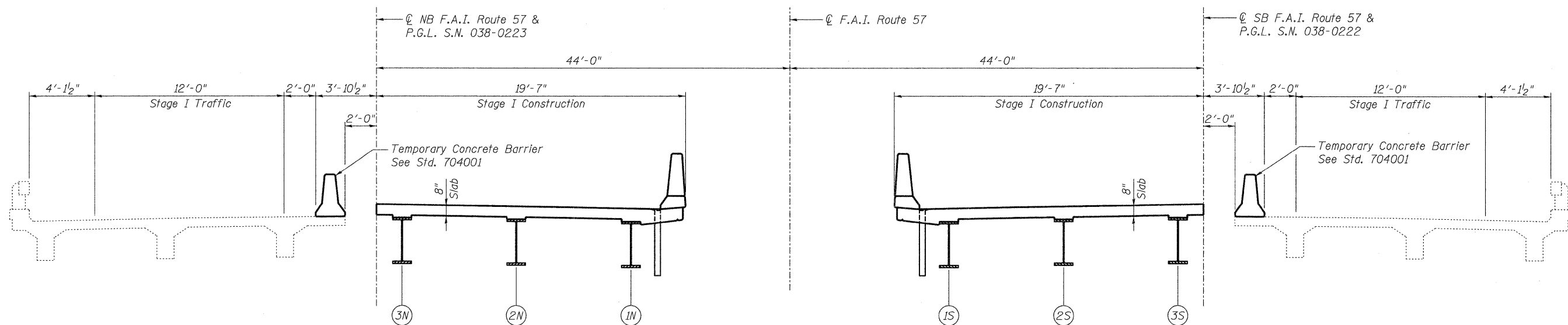


**STAGE I REMOVAL**



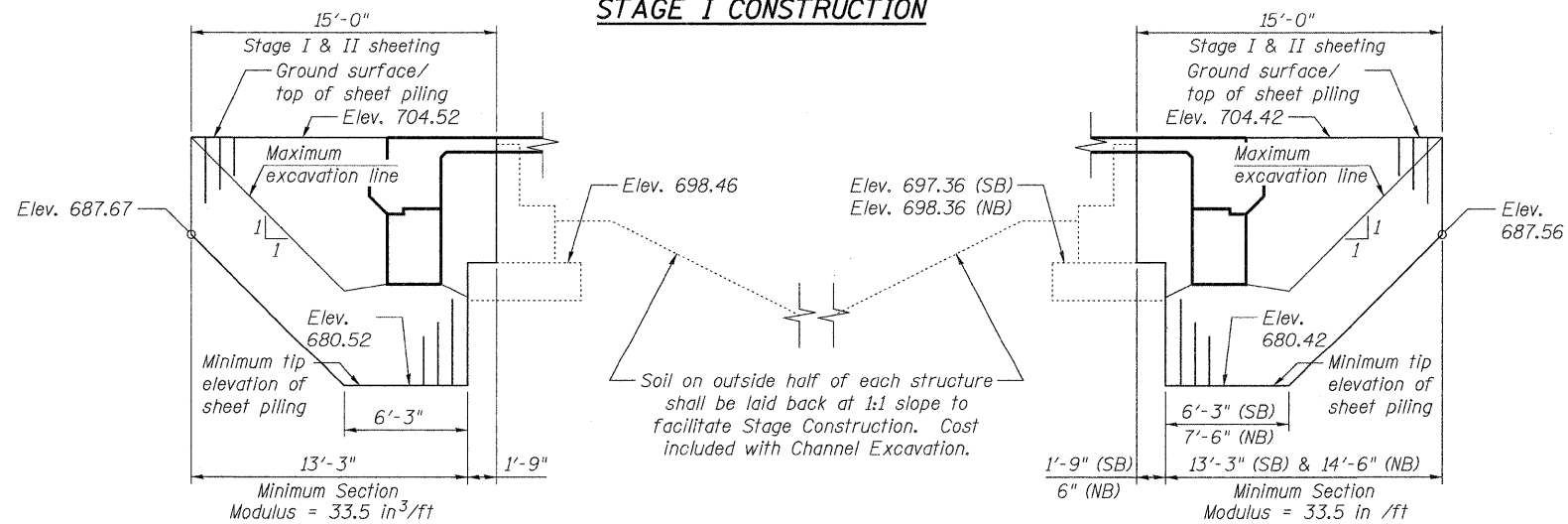
**STAGE I CONSTRUCTION**

**LEGEND**

Indicates Removal of Existing Structures

**BILL OF MATERIAL**

ITEM	UNIT	TOTAL
Temporary Sheet Piling	Sq. Ft.	1,239



**TEMPORARY SHEET PILING**  
(at North Abutment)  
(N.T.S.)

**TEMPORARY SHEET PILING**  
(at South Abutment)  
(N.T.S.)

**NOTES:**

1. If the Contractor chooses to alter the temporary cantilevered sheet piling design requirements shown on the plans, a design submittal including plan details and calculations will be required for review and acceptance by the Engineer.
2. The Contractor shall connect the first sheet to the existing abutment wall to ensure stability of sheets driven to the top of the existing footing. This connection shall be reviewed and accepted by the Engineer and included in the cost for Temporary Sheet Piling.
3. Cross Sections are shown looking South.
4. See sheet S6 of S41 for details of Temporary Concrete Barrier. For quantity, see Roadway Plans.

**benesch**  
engineers · scientists · planners  
Alfred Benesch & Company  
205 North Michigan Avenue, Suite 2400  
Chicago, Illinois 60601  
312-565-0450 Job No. 3938.09

FILE NAME =	USER NAME = rgrimm	DESIGNED - JLS	REVISED -
0380222&0223_66948_004_staging1.dgn	PLOT SCALE =	CHECKED - AAY	REVISED -
	PLOT DATE = 08/18/2011	DRAWN - RMG	REVISED -
		CHECKED - KJN	REVISED -

**STATE OF ILLINOIS**  
**DEPARTMENT OF TRANSPORTATION**

**STAGE I CONSTRUCTION DETAILS AND TEMPORARY SHEET PILING**  
**STRUCTURE NO. 038-0222/0223**

SHEET NO. S4 OF S41 SHEETS

F.A.I. RTE.	SECTION	COUNTY	TOTAL SHEETS	SHEET NO.
57	(38-8) BR & BR-1	IROQUOIS	73	19
				CONTRACT NO. 66948
ILLINOIS FED. AID PROJECT				

x:\39900s\3938\structures\1-57over-springcreek\final\plans\0380222&0223\_66948\_004\_staging1.dgn 08/18/2011 08:51:06