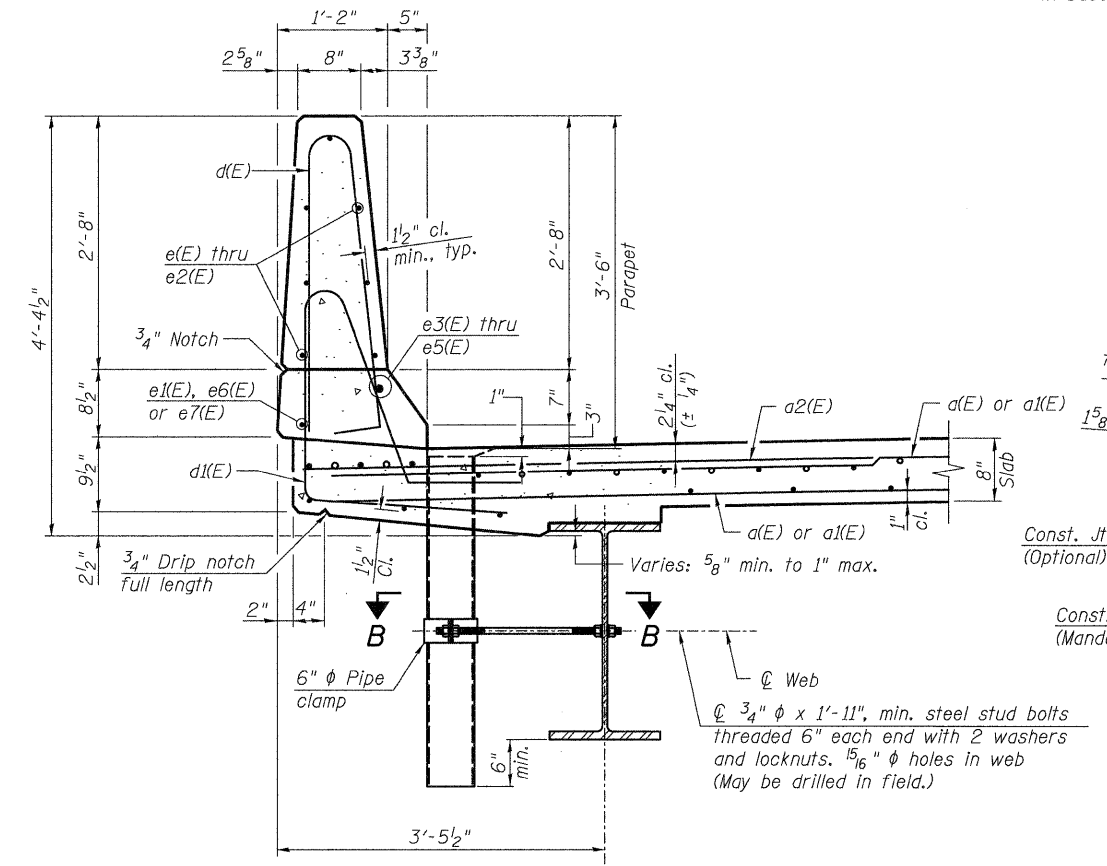
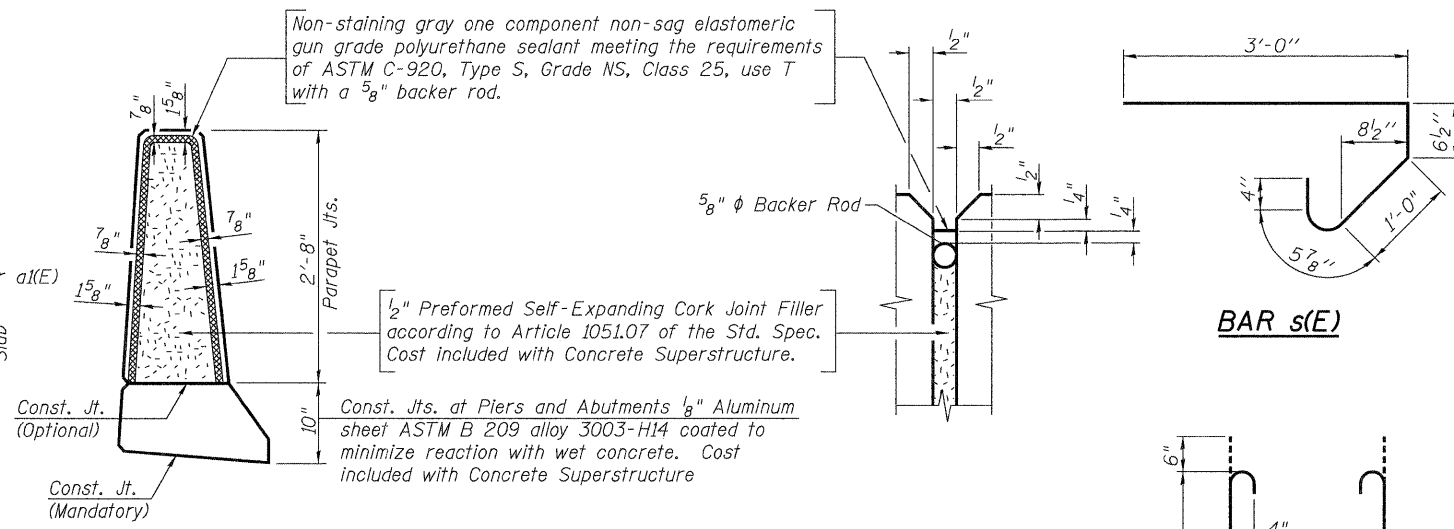


**INSIDE ELEVATION OF PARAPET**



**SECTION THRU PARAPET**

Non-staining gray one component non-sag elastomeric gun grade polyurethane sealant meeting the requirements of ASTM C-920, Type S, Grade NS, Class 25, use T with a 5/8" backer rod.



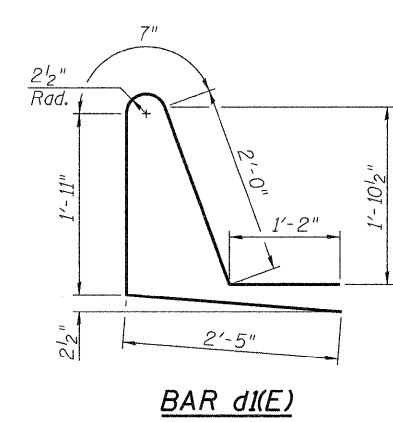
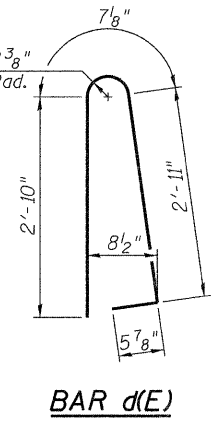
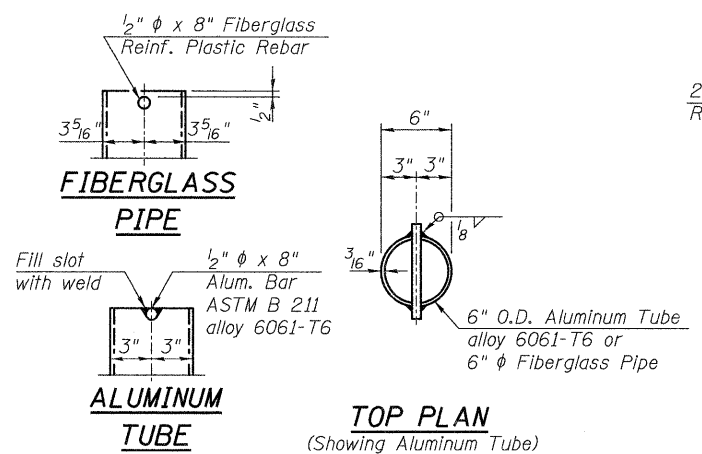
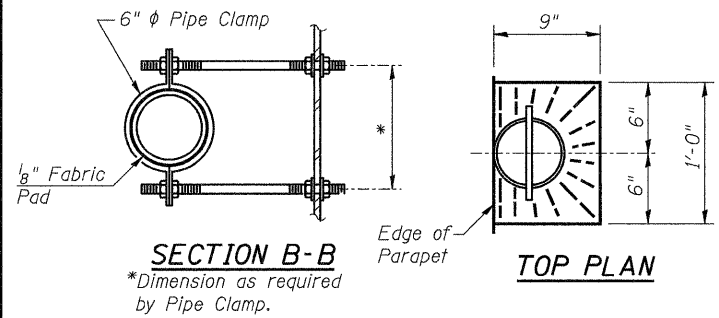
**PARAPET JOINT DETAILS**

- Notes:
1. Floor Drains need not be painted.
  2. Floor Drains shall be located clear of all diaphragms.
  3. Fiberglass pipe shall conform to ASTM D 2996, with short-time rupture strength hoop tensile stress of 30,000 p.s.i. minimum.
  4. Galvanize clamping device according to AASHTO M232. Cost of clamping device and inserts is included with Floor Drains.

**SUPERSTRUCTURE BILL OF MATERIAL (TWO DECKS)**

Bar	No.	Size	Length	Shape
a(E)	820	#5	19'-3"	—
a1(E)	820	#5	23'-3"	—
a2(E)	1016	#6	6'-6"	—
b(E)	368	#5	31'-6"	—
b1(E)	172	#6	27'-0"	—
b2(E)	410	#5	25'-10"	—
d(E)	508	#5	6'-10"	⌋
d1(E)	508	#5	8'-1"	⌋
e(E)	112	#4	12'-11"	—
e1(E)	128	#4	5'-11"	—
e2(E)	56	#4	18'-8"	—
e3(E)	8	#8	26'-2"	—
e4(E)	16	#8	5'-11"	—
e5(E)	4	#8	37'-8"	—
e6(E)	8	#4	26'-2"	—
e7(E)	4	#4	37'-8"	—
m(E)	28	#6	19'-5"	—
m1(E)	16	#6	6'-9"	—
m2(E)	8	#6	3'-1"	—
m3(E)	28	#6	23'-5"	—
m4(E)	4	#6	1'-5"	—
m5(E)	4	#6	5'-5"	—
s(E)	164	#5	5'-5"	⌋
s1(E)	164	#4	8'-6"	⌋
v(E)	176	#5	3'-8"	⌋
Reinforcement Bars, Epoxy Coated		Pound	92,490	
Concrete Superstructure		Cu. Yd.	366.4	
Bridge Deck Grooving		Sq. Yd.	980	
Protective Coat		Sq. Yd.	1,254	
Floor Drains		Each	20	

Bars indicated thus 20x3-#5 etc. indicates 20 lines of bars with 3 lengths per line.



**MINIMUM BAR LAP (Parapet)**  
 #4 bar = 2'-0"  
 #8 bar = 5'-2"

**benesch**  
 engineers - scientists - planners  
 Alfred Benesch & Company  
 205 North Michigan Avenue, Suite 2400  
 Chicago, Illinois 60601  
 312-565-0450 Job No. 3938.09

FILE NAME = 8380222&0223.66948.013_superdet.dgn	USER NAME = rgrimm	DESIGNED - JLS	REVISED -
PLOT SCALE =	PLOT DATE = 08/18/2011	CHECKED - AAY	REVISED -
		DRAWN - RMG	REVISED -
		CHECKED - KJN	REVISED -

**STATE OF ILLINOIS DEPARTMENT OF TRANSPORTATION**

**SUPERSTRUCTURE DETAILS**  
 STRUCTURE NO. 038-02220223  
 SHEET NO. S13 OF S41 SHEETS

F.A.I. RTE. 57	SECTION (38-B) BR & BR-1	COUNTY IROQUOIS	TOTAL SHEETS 73	SHEET NO. 28
			CONTRACT NO. 66948	
ILLINOIS FED. AID PROJECT				

x:\3900s\structures\1-57 over-sprngcreek\final\plans\0380222&0223.66948.013\_superdet.dgn 08/18/2011 08:51:10