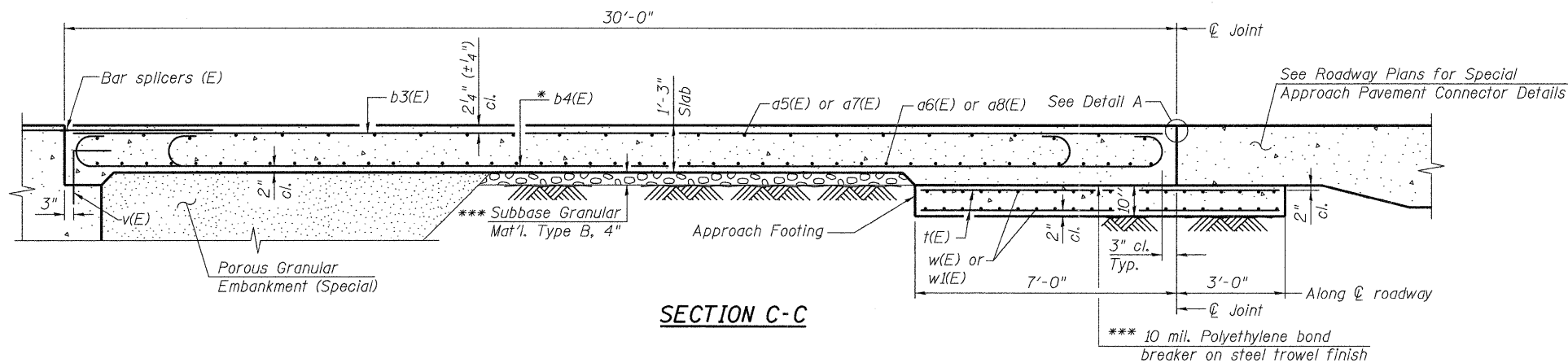
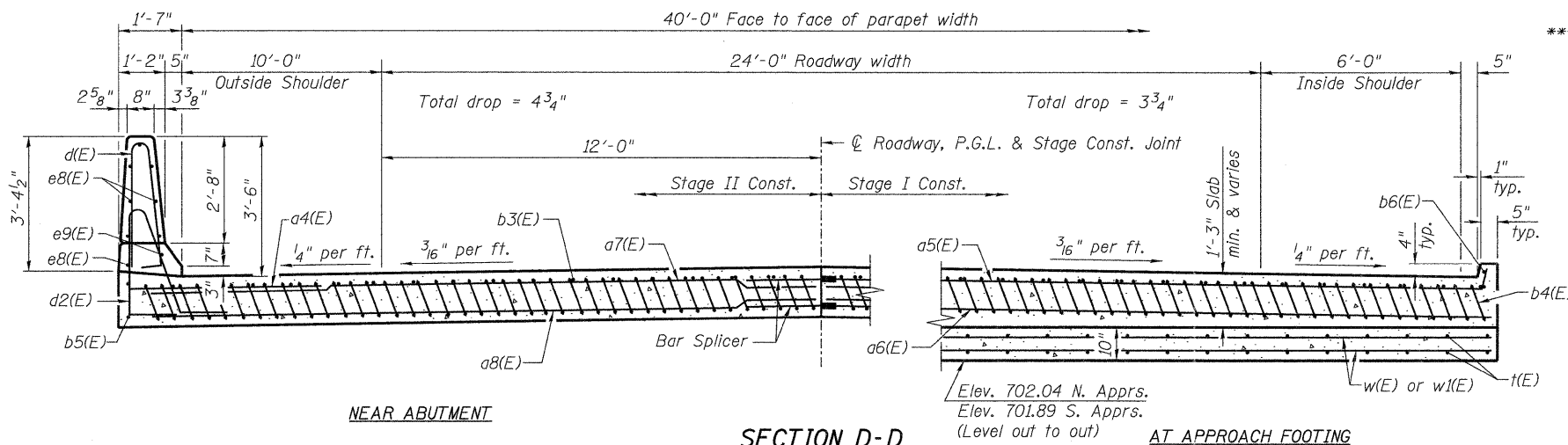


**FOUR APPROACHES
BILL OF MATERIAL**

Bar	No.	Size	Length	Shape
a4(E)	96	#6	6'-6"	—
a5(E)	100	#4	19'-1"	—
a6(E)	184	#5	18'-9"	—
a7(E)	100	#4	23'-1"	—
a8(E)	184	#5	22'-9"	—
b3(E)	140	#4	29'-8"	—
b4(E)	404	#9	29'-9"	—
b5(E)	16	#4	14'-8"	—
d(E)	136	#5	6'-10"	—
d2(E)	136	#5	7'-11"	—
e8(E)	64	#4	14'-8"	—
e9(E)	8	#8	14'-8"	—
t(E)	352	#4	9'-8"	—
w(E)	160	#5	18'-9"	—
w1(E)	160	#5	22'-9"	—
Concrete Superstructure		Cu. Yd.	263.4	
Concrete Structures		Cu. Yd.	51.6	
Reinforcement Bars, Epoxy Coated		Pound	67,750	
Bridge Deck Grooving		Sq. Yd.	508	
Protective Coat		Sq. Yd.	606	



SECTION C-C



NEAR ABUTMENT

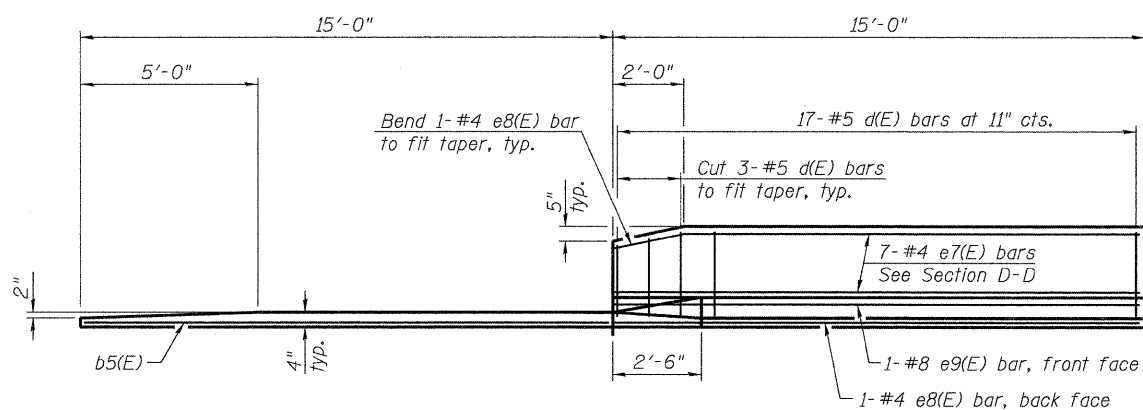
SECTION D-D

(See Plan for dimensions not shown)

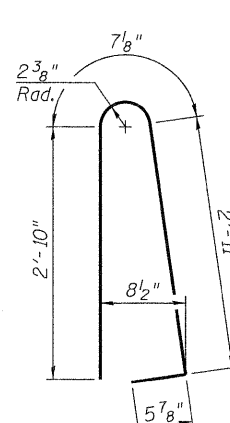
AT APPROACH FOOTING

* Tilt #9 b4(E) bars as required to maintain clearance.

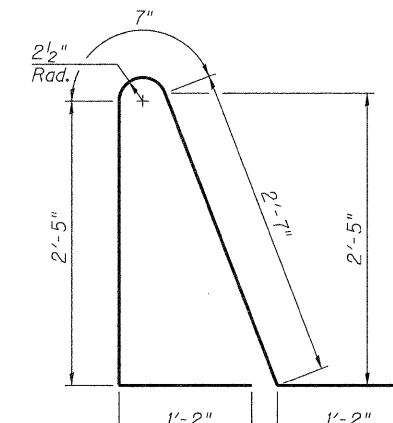
*** Cost included with Concrete Superstructure.



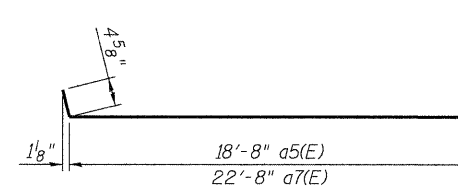
VIEW E-E



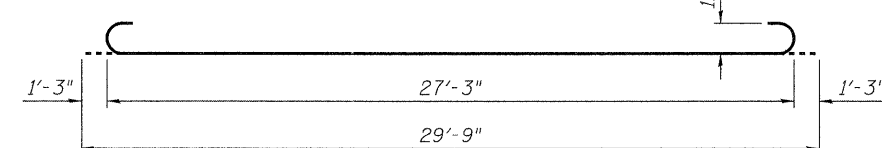
BAR d(E)



BAR d2(E)



BARS a5(E) AND a7(E)



BAR b4(E)

NOTES:

1. See sheet S15 of S41 for Detail A and View B-B.
2. Approach slab and parapet concrete shall be paid for as Concrete Superstructure.
3. Approach footing concrete shall be paid for as Concrete Structures.
4. Reinforcement shall be paid for as Reinforcement Bars, Epoxy Coated.
5. For v(E) bar details, see sheets S13 and S14 of S41.
6. The approach footing maximum applied service bearing pressure (Q_{max}) = 2.0 ksf.
7. For bar splicer details, see sheet S25 of S41.
8. Cost of excavation for approach footing included with Concrete Structures.
9. For Porous Granular Embankment (Special) and drainage treatment details, see sheet S2 of S41.
10. For additional parapet details, see sheet S13 of S41.

benesch
engineers - scientists - planners
Alfred Benesch & Company
205 North Michigan Avenue, Suite 2400
Chicago, Illinois 60601
312-565-0450 Job No. 3938.09

FILE NAME =	USER NAME = rgr:mmm	DESIGNED - JLS	REVISED -
8388222&0223.66948.016.br.apprdet2.dgn		CHECKED - AAY	REVISED -
	PLOT SCALE =	DRAWN - RMG	REVISED -
	PLOT DATE = 08/18/2011	CHECKED - KJN	REVISED -

**STATE OF ILLINOIS
DEPARTMENT OF TRANSPORTATION**

**BRIDGE APPROACH SLAB DETAILS (2 OF 2)
STRUCTURE NO. 038-02220223**

SHEET NO. S16 OF S41 SHEETS

F.A.I. RTE.	SECTION	COUNTY	TOTAL SHEETS	SHEET NO.
57	(38-B) BR & BR-1	IROQUOIS	73	31
CONTRACT NO. 66948			ILLINOIS FED. AID PROJECT	

x:\3900s\3938\structures\1-57overspringcreek\final\plans\0380222&0223.66948.016.br.apprdet2.dgn 08/18/2011