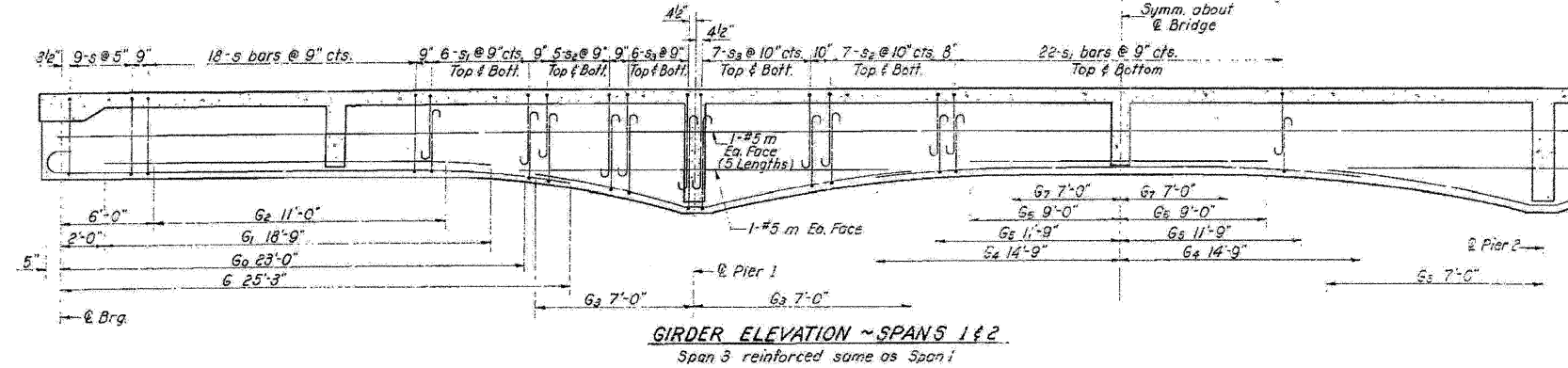
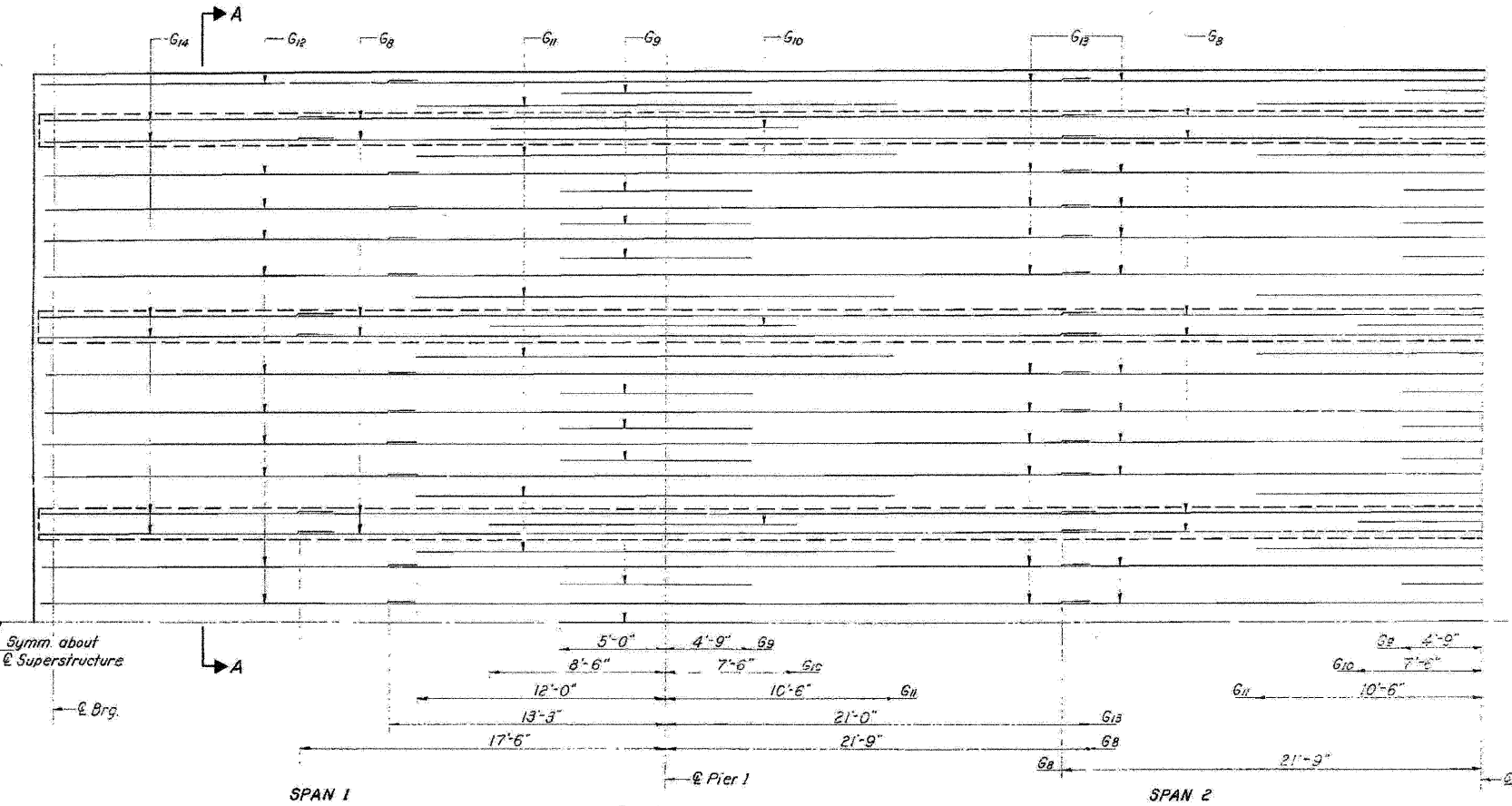


STATE OF ILLINOIS  
DEPARTMENT OF PUBLIC WORKS & BUILDINGS  
DIVISION OF HIGHWAYS

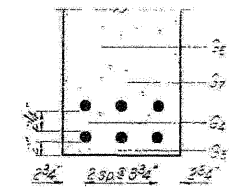
PROJECT NO. 1357 \* IROQUOIS 118 23  
SHEET NO. 3  
25-SHEETS



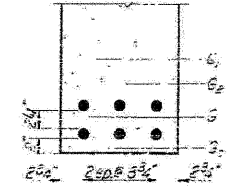
GIRDER ELEVATION - SPANS 1 & 2  
Span 3 reinforced same as Span 1



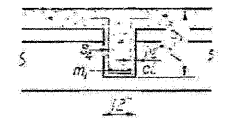
PARTIAL PLAN - SPANS 1 & 2  
Showing reinforcement in top of slab, Span 3 same as Span 1



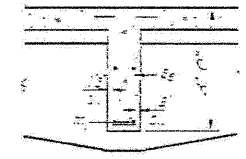
GIRDER DETAILS AT & SPAN 2



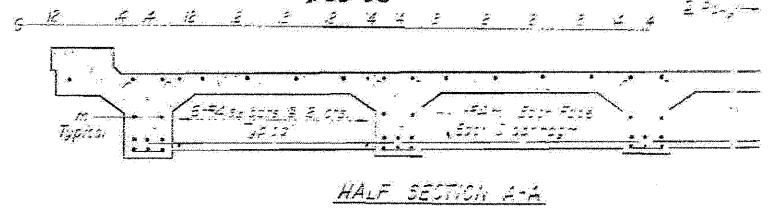
GIRDER DETAILS AT & SPANS 1 & 3



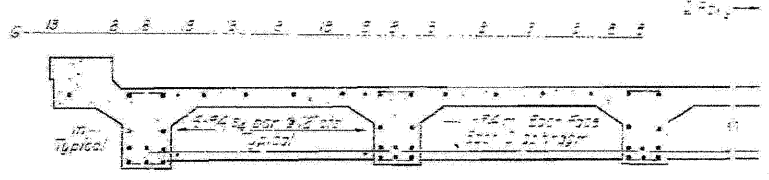
SECTION THRU INTERIOR DIAPHRAGM



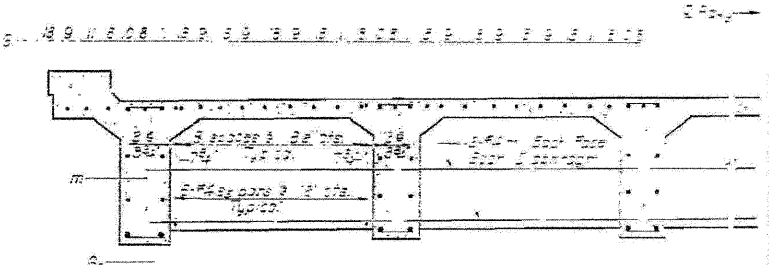
SECTION THRU DIAPHRAGM AT PIERS



HALF SECTION A-A



HALF SECTION AT & INT. SPAN



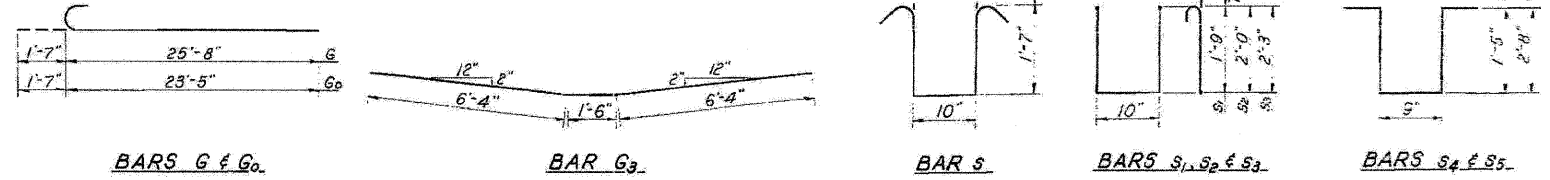
HALF SECTION AT PIERS

2 SUPERSTRUCTURES  
BAR LIST FOR GIRDERS

Bar No.	Bar Size	Bar Spacing	Bar Length	Bar Location
G1	#5	12"	21'-0"	Top of Span 1
G2	#5	12"	21'-0"	Top of Span 1
G3	#5	12"	21'-0"	Top of Span 1
G4	#5	12"	21'-0"	Top of Span 1
G5	#5	12"	21'-0"	Top of Span 1
G6	#5	12"	21'-0"	Top of Span 1
G7	#5	12"	21'-0"	Top of Span 1
G8	#5	12"	21'-0"	Top of Span 1
G9	#5	12"	21'-0"	Top of Span 1
G10	#5	12"	21'-0"	Top of Span 1
G11	#5	12"	21'-0"	Top of Span 1
G12	#5	12"	21'-0"	Top of Span 1
G13	#5	12"	21'-0"	Top of Span 1
G14	#5	12"	21'-0"	Top of Span 1
S1	#5	12"	21'-0"	Top of Span 1
S2	#5	12"	21'-0"	Top of Span 1
S3	#5	12"	21'-0"	Top of Span 1
S4	#5	12"	21'-0"	Top of Span 1
S5	#5	12"	21'-0"	Top of Span 1

FOR INFORMATION ONLY

DESIGNED: I. Kaspar  
CHECKED: J. B. Nelson  
DRAWN: J. L. Armstrong  
CHECKED: J. B. N.  
EXAMINED: [Signature]  
PASSED: [Signature]  
APPROVED: [Signature]



GIRDER REINFORCEMENT  
F.A.I. RT. 57 SEC. 38-8B  
IROQUOIS COUNTY  
STA. 1357+52

benesch  
engineers - scientists - planners  
Alfred Benesch & Company  
205 North Michigan Avenue, Suite 2400  
Chicago, Illinois 60601  
312-565-0450 Job No. 3938.09

FILE NAME = 0380222&0223.66948\_035\_Exist.Plan\_3.dgn  
USER NAME = rgrmm  
PLOT SCALE =  
PLOT DATE = 08/18/2011

DESIGNED - JLS  
CHECKED - AAY  
DRAWN - RMG  
CHECKED - KJN  
REVISED -  
REVISED -  
REVISED -  
REVISED -

STATE OF ILLINOIS  
DEPARTMENT OF TRANSPORTATION

EXISTING PLAN INFORMATION (3 OF 9)  
STRUCTURE NO. 038-02220223  
SHEET NO. S35 OF S41 SHEETS

F.A.I. RTE. 57  
SECTION (38-B) BR & BR-1  
COUNTY IROQUOIS  
TOTAL SHEETS 73  
SHEET NO. 50  
CONTRACT NO. 66948  
ILLINOIS FED. AID PROJECT

x:\3900s\3938\structures\1-57 oversprngcreek\final\plans\0380222&0223.66948\_035\_Exist.Plan\_3.dgn 08/18/2011 08:51:35