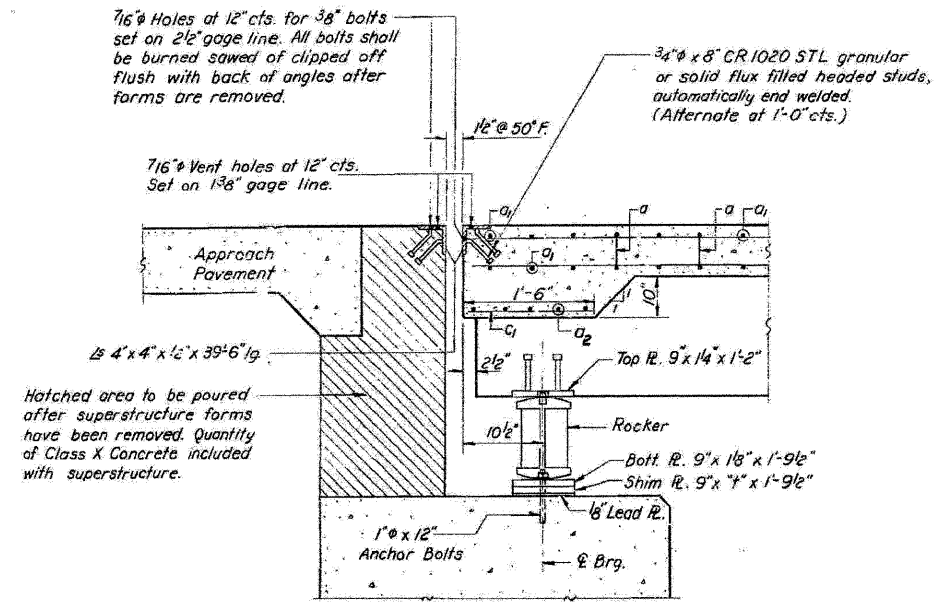


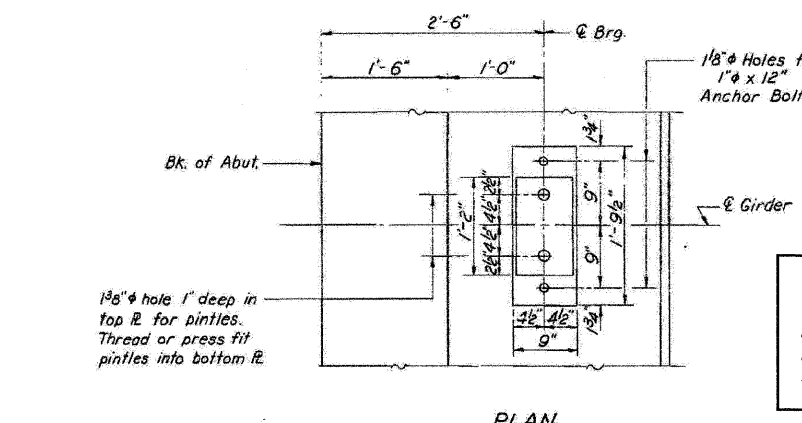
STATE OF ILLINOIS  
DEPARTMENT OF PUBLIC WORKS & BUILDINGS  
DIVISION OF HIGHWAYS

ROUTE NO.	SECTION	COUNTY	TOTAL SHEETS	SHEET NO.
I-57	#	IRROQUOIS	113	31
FED. ROAD DIST. NO. 3	SECTION	FED. AID PROJECT		

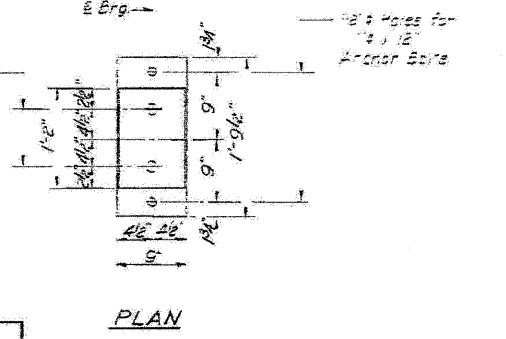
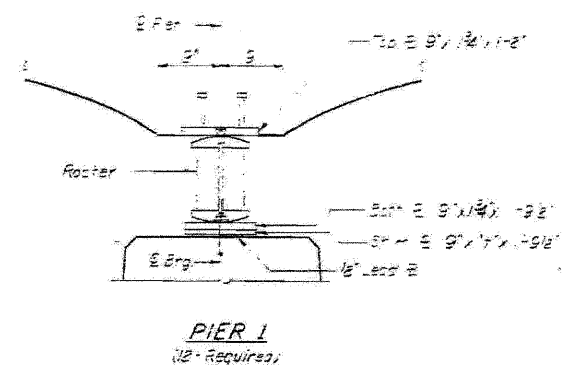
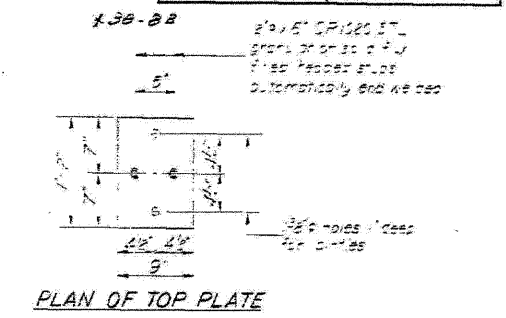
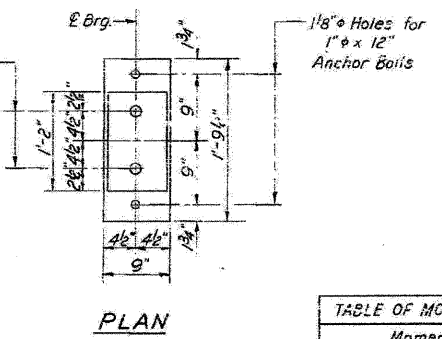
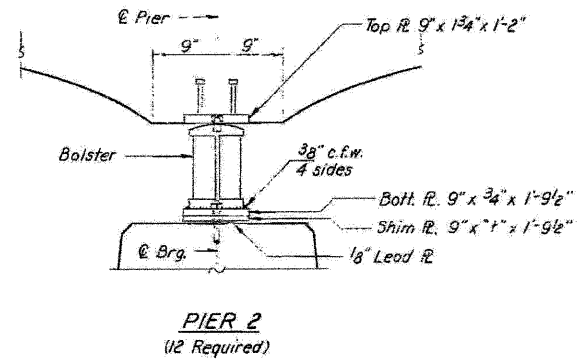
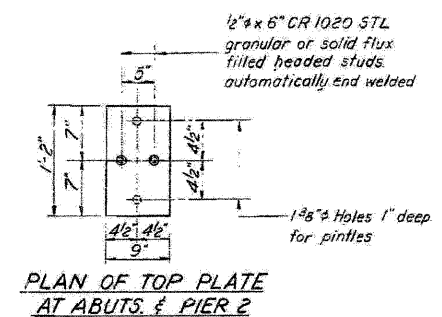
SHEET NO. 31  
12 SHEETS



SECTION AT ABUTMENTS  
(24 Brgs. Required)



**NOTE:**  
Rocker bearings at abutments were replaced in 1999 with Type I Elastomeric Bearings. See Sheet S37 of S41 for details.



STRESS TABLES

TABLE OF MOMENTS & REACTIONS: INTERIOR BEAMS

	Moments: Ft.-Kips		Reactions: Kips		Shear: Kips	
	A Sp. 1	Pier 1	.5 Sp. 2	Abut.	Pier	Abut. Pier
Σ D.L.	53.0	-184.6	44.0	11.5	50.0	11.5 25.4
L.L.	147.0	-179.0	143.6	28.5	37.1	28.5 34.6
Imp.	43.8	-53.0	43.3	8.5	15.9	8.5 10.3
Total	243.8	-416.6	230.9	48.6	103.0	48.6 70.3

PROPERTIES:

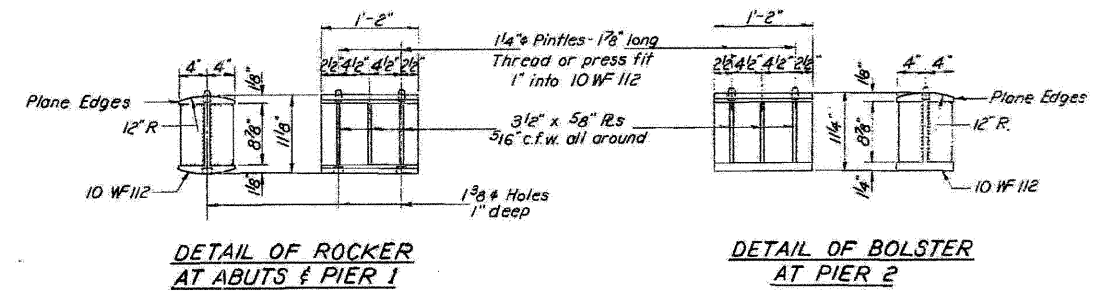
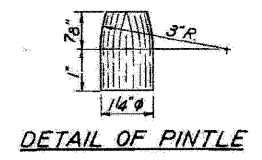
Location	Depth of T Beam	Moment of Inertia I
.5 Spans 1 & 2	24"	31,450 in <sup>4</sup>
Piers	42"	180,180 in <sup>4</sup>

SHIM "T" DIMENSIONS

LOCATION	NORTH BOUND LANES					SOUTH BOUND LANES				
	Girder 1	2	3	4	5	N Abut.	Pier 1	Pier 2	S. Abut.	5
N. Abut.				4"	3 1/2"					
Pier 1				4"	3 1/2"					
Pier 2				4"	3 1/2"					
S. Abut.				4"	3 1/2"					
N. Abut.				4"	3 1/2"					
Pier 1				4"	3 1/2"					
Pier 2				4"	3 1/2"					
S. Abut.				4"	3 1/2"					

DESIGNED	I. Kaspar
CHECKED	J. B. Nelson
DRAWN	J. L. Armstrong
CHECKED	J.B.N.

EXAMINED	June 7 1965
PASSED	H. J. Wilson
APPROVED	V. L. Staff



FOR INFORMATION ONLY

BEARING DETAILS  
F.A.I. RTE. 57 SEC. 38-8B  
IRROQUOIS COUNTY  
STA. 1357+52

**benesch** Alfred Benesch & Company  
205 North Michigan Avenue, Suite 2400  
Chicago, Illinois 60601  
312-565-0450 Job No. 3938.09

FILE NAME =	DESIGNED - JLS	REVISD -	EXISTING PLAN INFORMATION (4 OF 9)	F.A.I. RTE. 57	SECTION (38-8) BR & BR-1	COUNTY IROQUOIS	TOTAL SHEETS 73	SHEET NO. 51
0380222&0223.66948.036.Exist.Plan.4.dgn	CHECKED - AAY	REVISD -	STATE OF ILLINOIS DEPARTMENT OF TRANSPORTATION	STRUCTURE NO. 038-0222/0223		CONTRACT NO. 66948		ILLINOIS FED. AID PROJECT
PLOT SCALE =	DRAWN - RMG	REVISD -	SHEET NO. 536 OF 541 SHEETS					
PLOT DATE = 08/18/2011	CHECKED - KJN	REVISD -						

x:\3900s\3938\structures\1-57overspringcreek\final\plans\0380222&0223.66948.036.Exist.Plan.4.dgn 08/18/2011 08:51:36