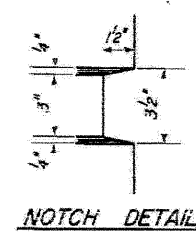
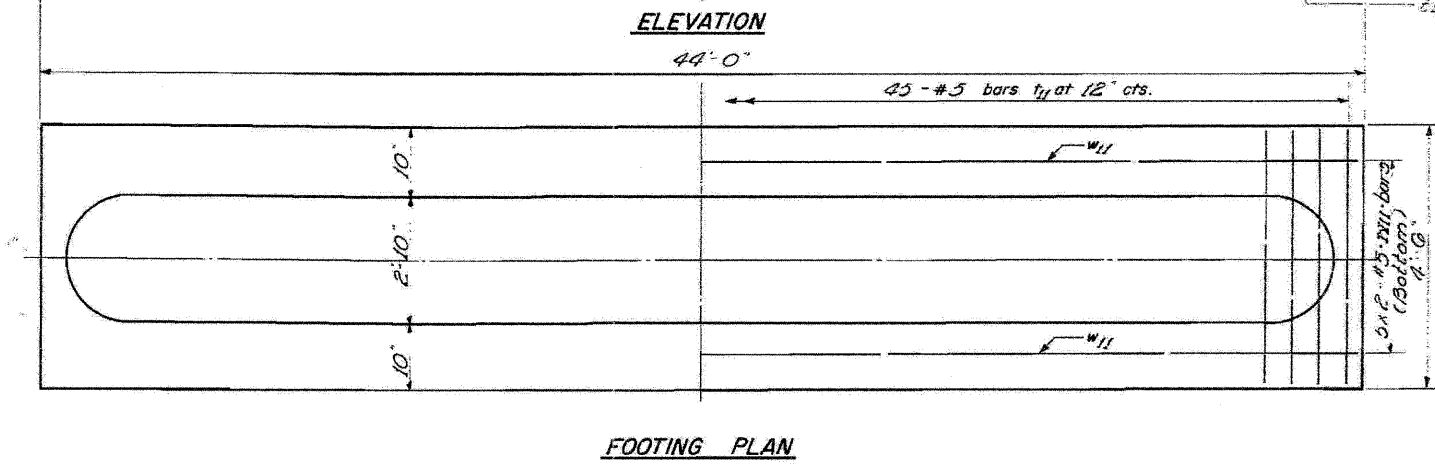
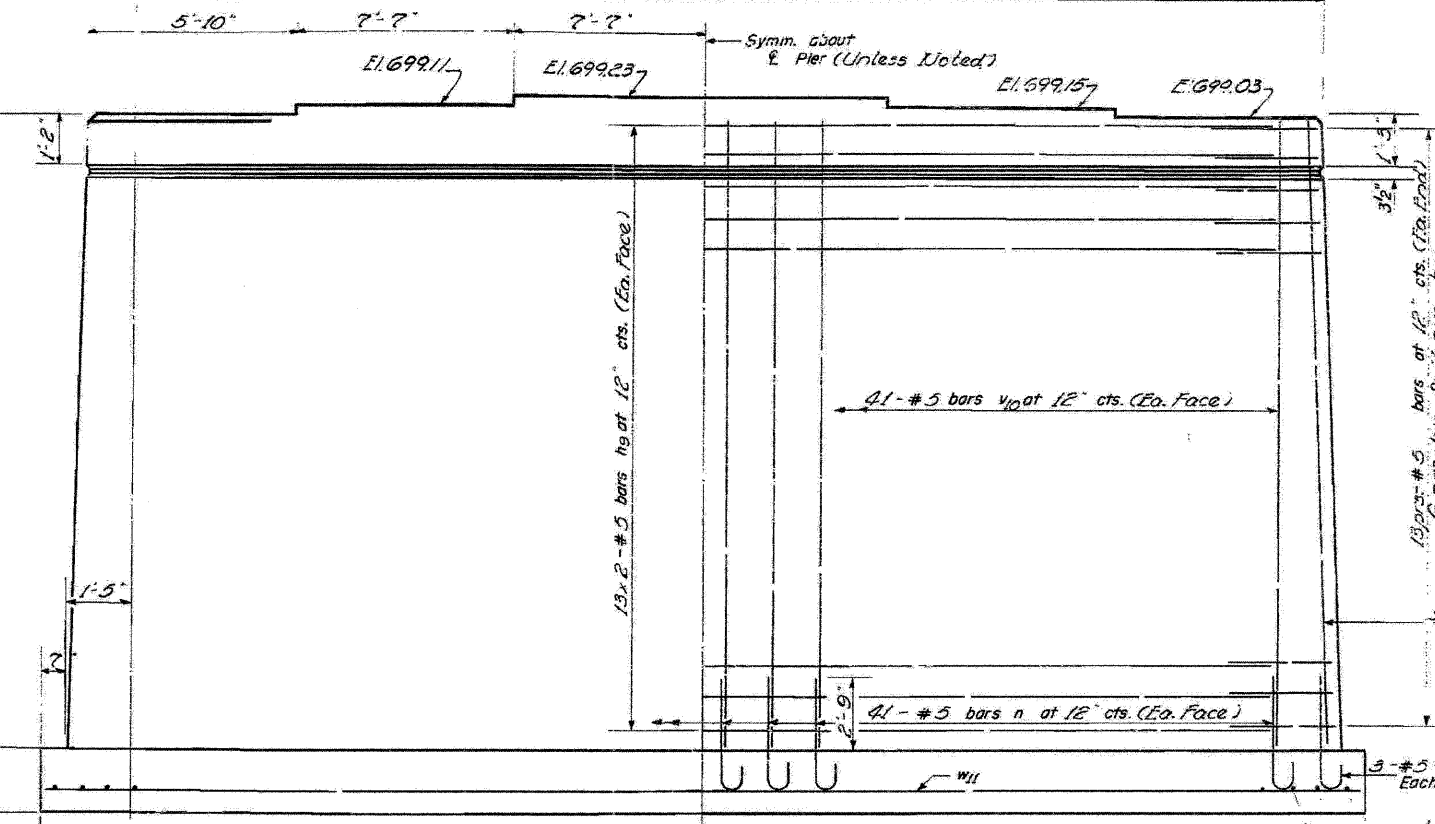
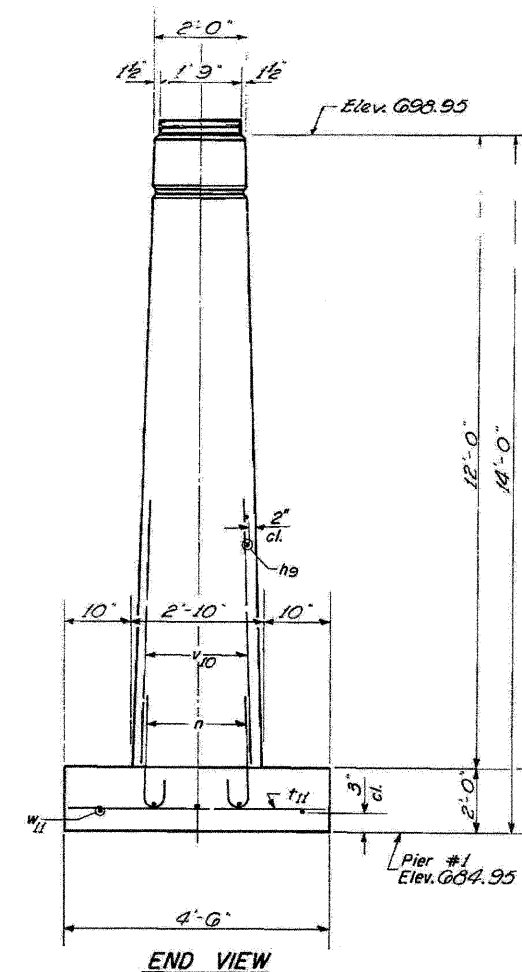
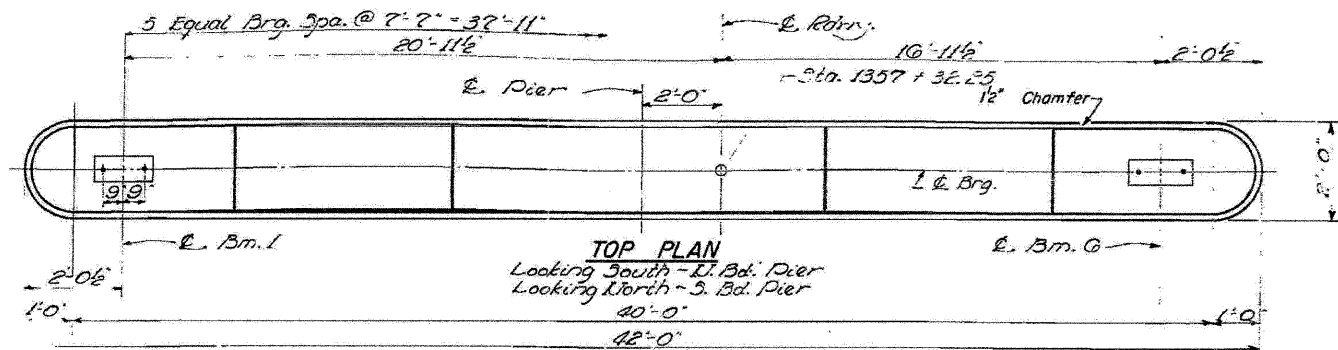
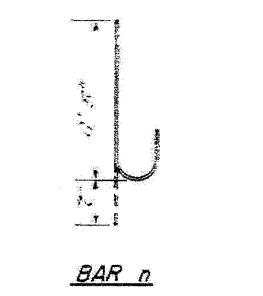


STATE OF ILLINOIS
DEPARTMENT OF PUBLIC WORKS & BUILDINGS
DIVISION OF HIGHWAYS

ROUTE NO.	SECTION	COUNTY	TOTAL SHEETS	SHEET NO.
57	BR & BR-1	IROQUOIS	73	53



Bar	R	A
1	10'-3"	3'-0"
2	1'-0"	2'-3"
3		
4		
5		
6		
7		
8		
9		
10		



**2 PIERS
BILL OF MATERIAL**

Bar	No.	Size	Length	Shape
1	48	#5	3'-0"	U
2	36	#5	3'-3"	U
3	104	#5	2'-0"	U
4	170	#5	5'-5"	U
5	90	#5	4'-3"	U
6	176	#5	11'-5"	U
7	20	#5	22'-9"	U

Class A Concrete Cu. Yds. 120.6
Reinforcement Bars Lbs. 6530

DESIGNED: I. Kaspar
CHECKED: J.B.N. Jacobs
DRAWN: W.A. Sausaman
CHECKED: J.B.N.

EXAMINED: [Signature]
PASSED: [Signature]
APPROVED: [Signature]

JUNE 7 1965

P-1 Re-drawn 7-21-59 Rev. 11-25-59

FOR INFORMATION ONLY

PIER 1
U.B.D. & S.B.D. LANES
E.A.I. RT. 57 - SEC. 38-B/B
IROQUOIS COUNTY
STA. 1357 + 52

benesch
engineers - scientists - planners

Alfred Benesch & Company
205 North Michigan Avenue, Suite 2400
Chicago, Illinois 60601
312-565-0450 Job No. 3938.09

FILE NAME = 0380222&0223.66948.038-Exist.Plan.6.dgn	USER NAME = pgr:mm	DESIGNED - JLS	REVISD -	STATE OF ILLINOIS DEPARTMENT OF TRANSPORTATION	EXISTING PLAN INFORMATION (6 OF 9) STRUCTURE NO. 038-0222/0223 SHEET NO. 538 OF 541 SHEETS	F.A.I. RTE. 57	SECTION (38-B) BR & BR-1	COUNTY IROQUOIS	TOTAL SHEETS 73	SHEET NO. 53
PLOT SCALE =	DRAWN - RMG	REVISD -	CONTRACT NO. 66948							
PLOT DATE = 06/18/2011	CHECKED - KJN	REVISD -	(ILLINOIS) FED. AID PROJECT							