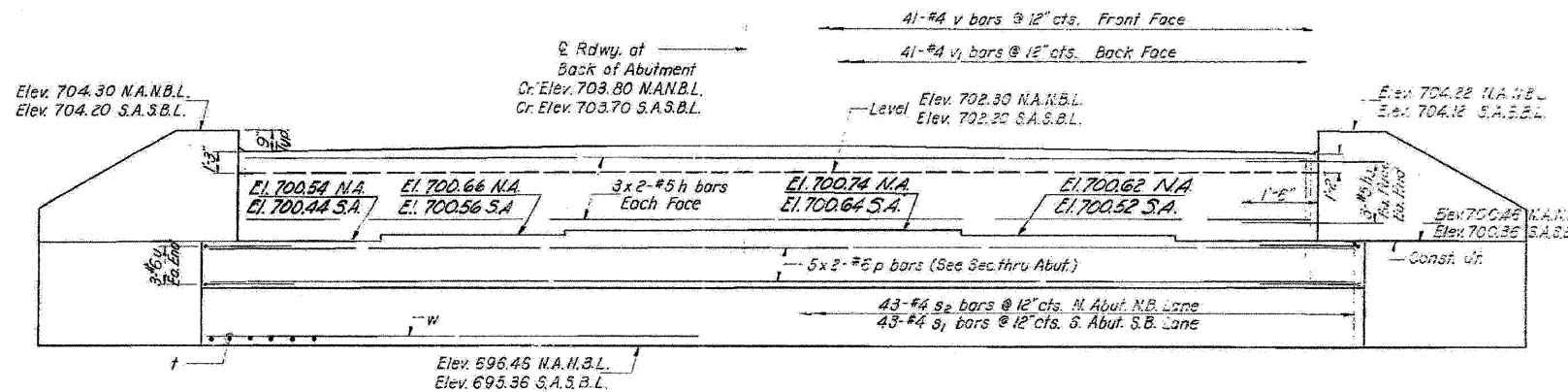


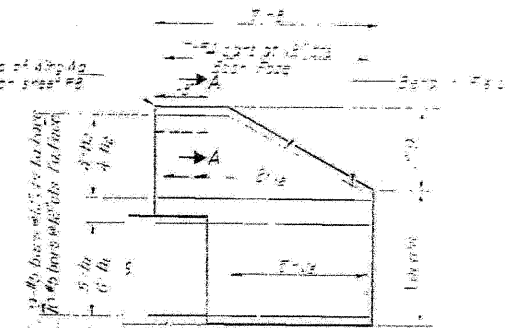
STATE OF ILLINOIS  
DEPARTMENT OF PUBLIC WORKS & BUILDINGS  
DIVISION OF HIGHWAYS

DATE	BY	NO.	REV.	SHEET NO.
1-15-57	J.A.S.	1357	25	13-SHEETS

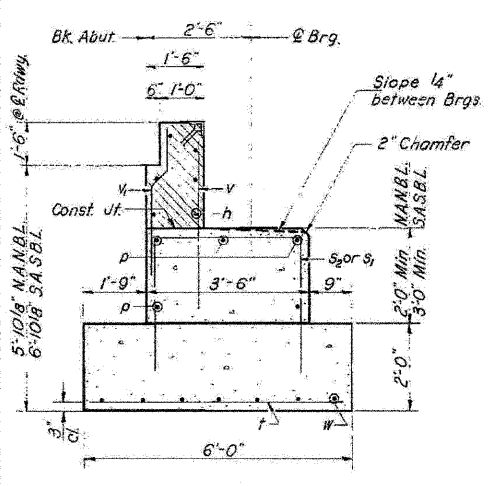


ELEVATION

N.A.N.B.L. = North Abut. North Bound Lanes  
S.A.S.B.L. = South Abut. South Bound Lanes

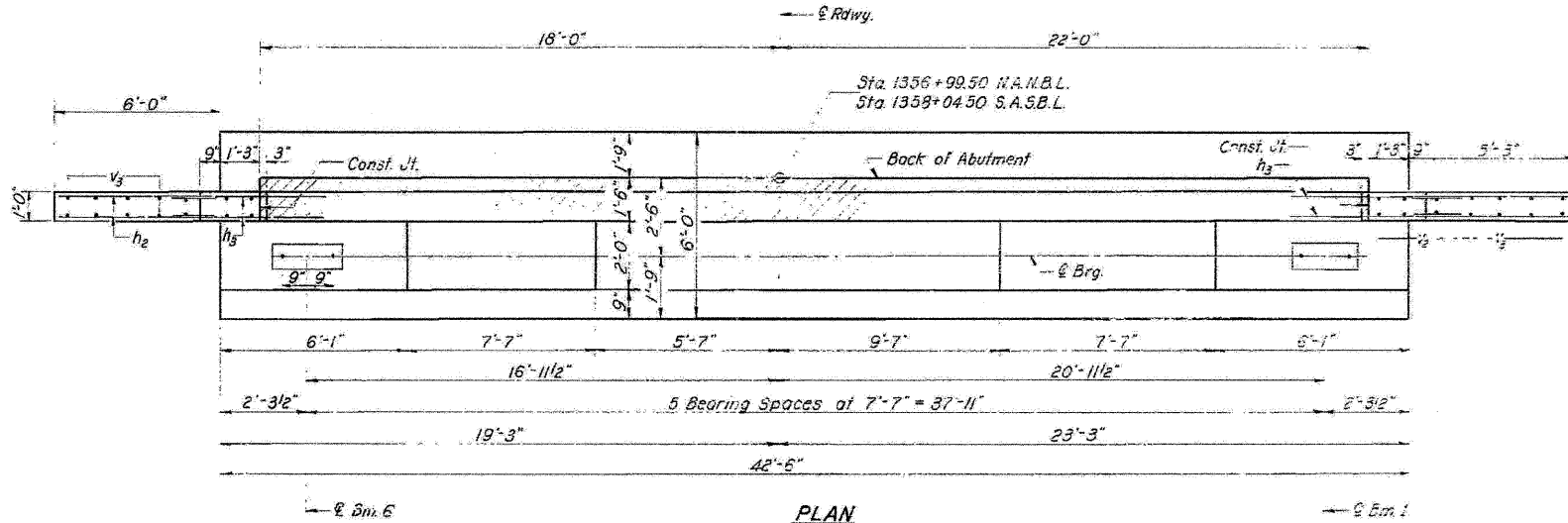


WING WALL ELEVATION



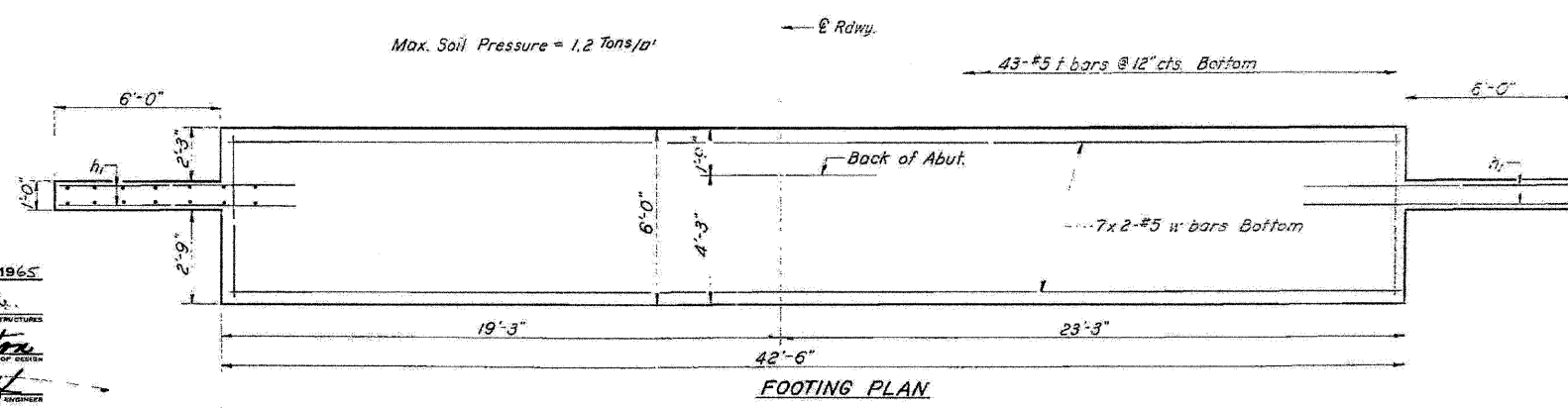
SECTION THRU ABUTMENT

Hatched Area to be poured after superstructure is in place. Class X Concrete included with Superstructure

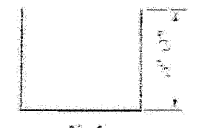


PLAN

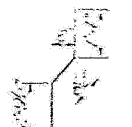
Max. Soil Pressure = 1.2 Tons/sq ft



FOOTING PLAN



BAR u



BAR v



BARS s, #5

TWO ABUTMENTS BILL OF MATERIAL

Bar	No.	Size	Length	Weight	Notes
u	24	#5	20'-0"	120	
v	24	#5	20'-0"	120	
h1	96	#5	19'-3"	480	
h2	96	#5	19'-3"	480	
h3	96	#5	19'-3"	480	
h5	96	#5	19'-3"	480	
s	24	#5	20'-0"	120	
w	24	#5	20'-0"	120	

FOR INFORMATION ONLY

N. ABUT. N.B. LANES &  
S. ABUT. S.B. LANES  
F.A.I. RT. 57 SEC. 38-8B  
IROQUOIS COUNTY  
STA. 1357+52

DESIGNED	I. Kaspar
CHECKED	J. B. M.
DRAWN	J. L. Armstrong
CHECKED	J. B. M.

EXAMINED	J. L. Armstrong	DATE	JUNE 7 1965
PASSED	H. J. Altman		
APPROVED	J. L. Armstrong		

benesch  
engineers - scientists - planners  
Alfred Benesch & Company  
205 North Michigan Avenue, Suite 2400  
Chicago, Illinois 60601  
312-565-0450 Job No. 3938.09

FILE NAME	0380222&0223.66948.041.Exist.Plan.9.dgn
USER NAME	rgr:mm
PLOT SCALE	
PLOT DATE	08/18/2011

DESIGNED	JLS	REVISED	-
CHECKED	AAY	REVISED	-
DRAWN	RMG	REVISED	-
CHECKED	KJN	REVISED	-

STATE OF ILLINOIS  
DEPARTMENT OF TRANSPORTATION

EXISTING PLAN INFORMATION (9 OF 9)  
STRUCTURE NO. 038-02220223  
SHEET NO. S41 OF S41 SHEETS

F.A.I. RTE.	SECTION	COUNTY	TOTAL SHEETS	SHEET NO.
57	(38-8) BR & BR-1	IROQUOIS	73	56
CONTRACT NO. 66948			ILLINOIS FED. AID PROJECT	

x:\3900s\3938\structures\1-57over-springcreek\final\plans\0380222&0223.66948.041.Exist.Plan.9.dgn 08/18/2011