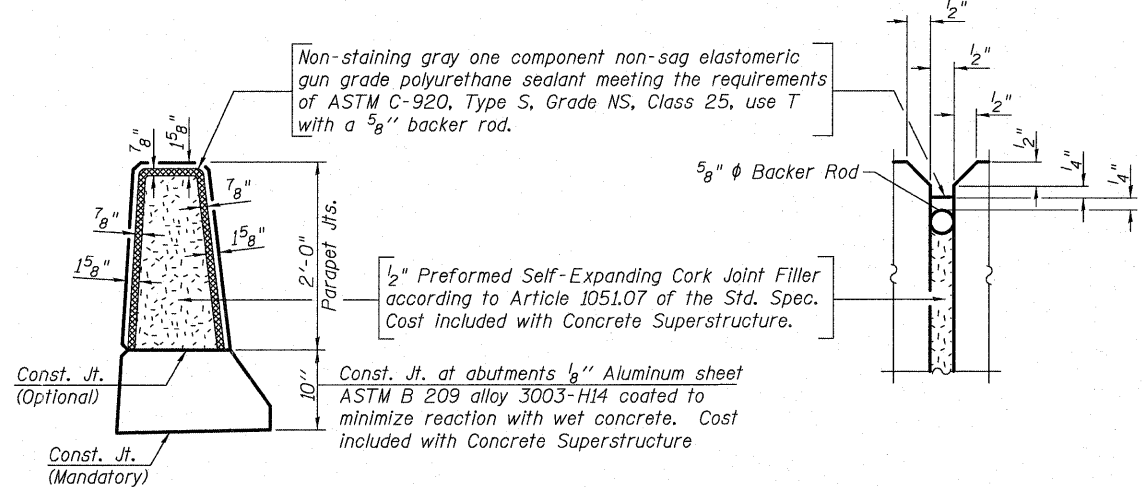
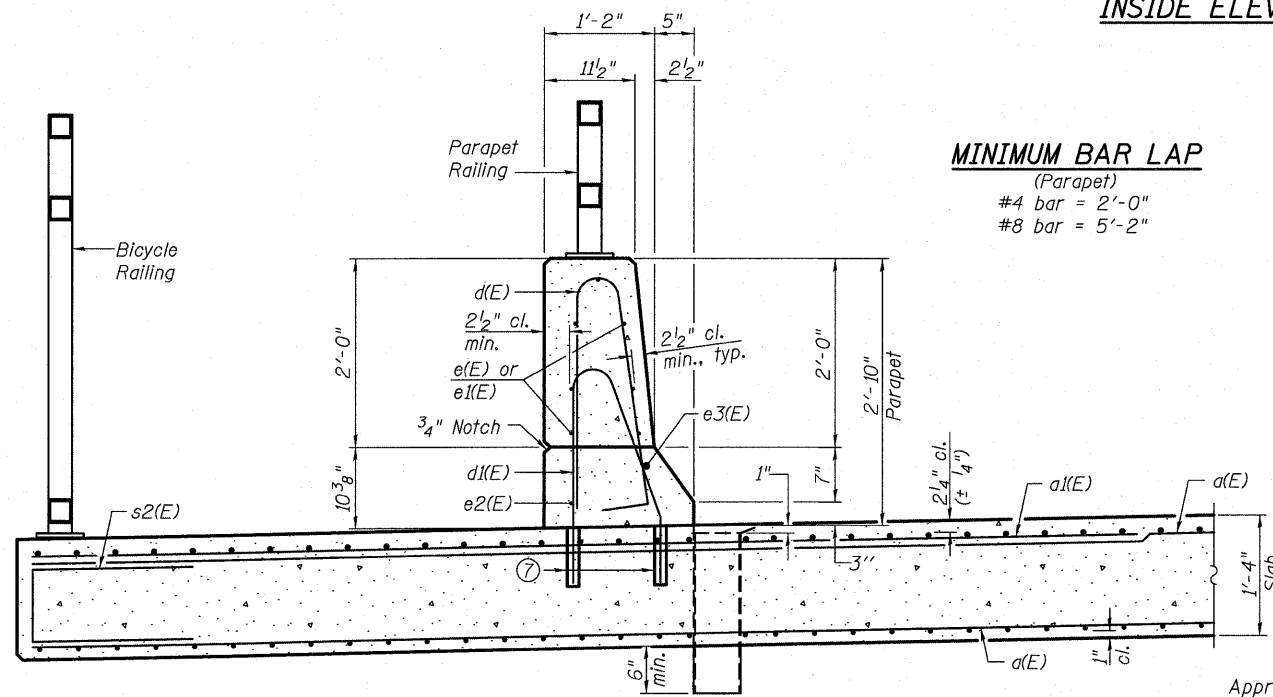


**SUPERSTRUCTURE
BILL OF MATERIAL**

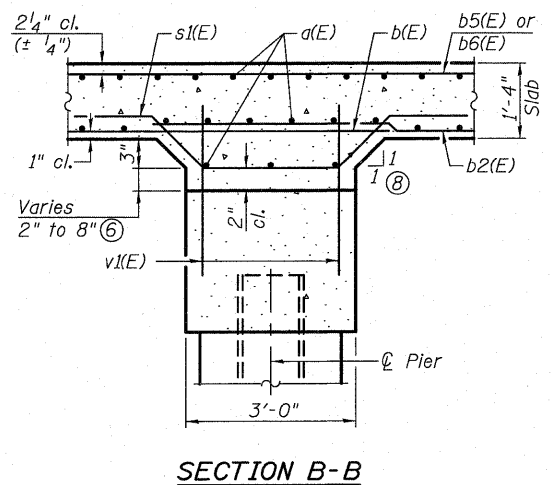
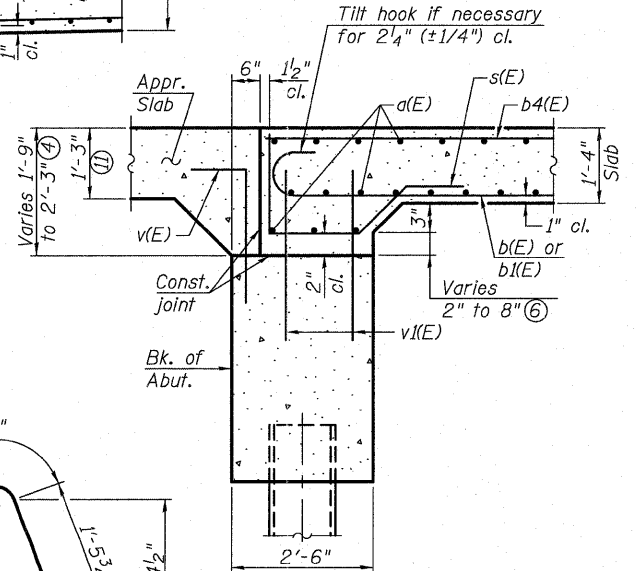
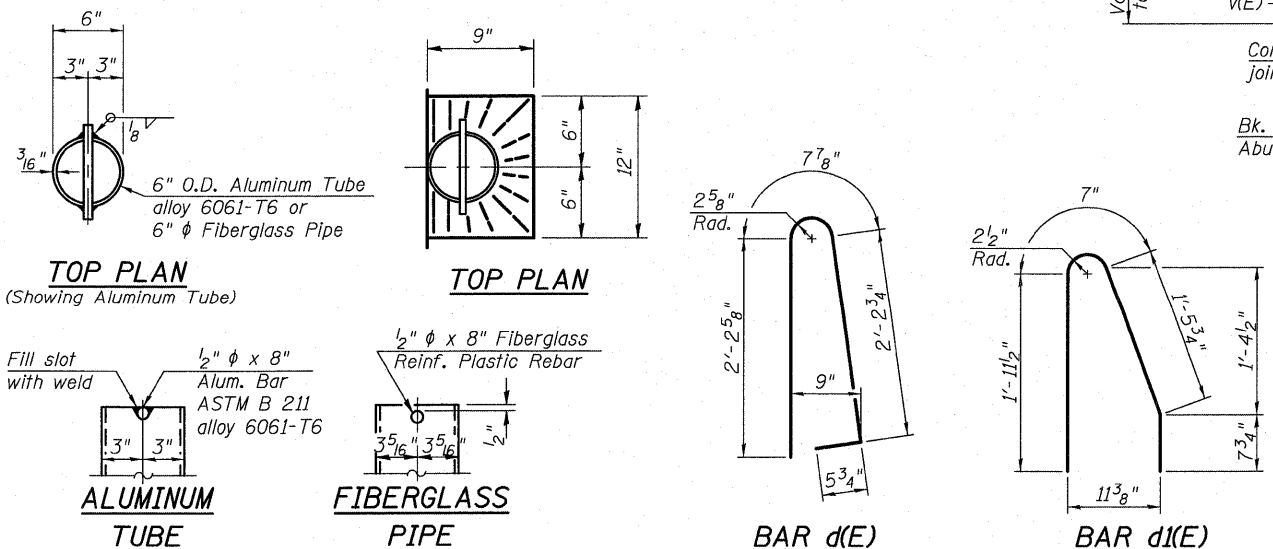
Bar	No.	Size	Length	Shape
d(E)	334	#5	26'-10"	—
a(E)	122	#6	12'-1"	—
b(E)	112	#8	32'-10"	—
b1(E)	108	#8	24'-0"	—
b2(E)	56	#8	38'-2"	—
b3(E)	54	#8	18'-0"	—
b4(E)	132	#8	23'-7"	—
b5(E)	132	#9	33'-5"	—
b6(E)	128	#9	12'-0"	—
d(E)	202	#5	5'-7"	—
d1(E)	202	#5	4'-8"	—
e(E)	56	#4	14'-5"	—
e1(E)	28	#4	16'-2"	—
e2(E)	8	#4	24'-5"	—
e3(E)	6	#8	34'-0"	—
s(E)	112	#5	5'-9"	—
s1(E)	112	#5	8'-2"	—
s2(E)	369	#4	4'-10"	—
Concrete Superstructure			Cu. Yd.	283.5
Reinforcement Bars, Epoxy Coated			Pound	71,630

INSIDE ELEVATION OF PARAPET



PARAPET JOINT DETAILS

SECTION THRU PARAPET



- Notes:
- The exterior surfaces of the floor drains shall be coated or pigmented by the manufacturer with a color that matches the concrete.
 - Fiberglass pipe shall conform to ASTM D 2996, with short-time rupture strength hoop tensile stress of 30,000 p.s.i. minimum.
 - Bars indicated thus 1 x 4-#4 etc. indicates 1 line of bars with 4 lengths per line.
 - Pour bridge slab before pouring approach slab or sidewalk.
 - See Section Thru Parapet.
 - Minimum dimension located at edge of slab and maximum dimension located at ϕ of Roadway.
 - Core and set #5 d1(E) bar according to Article 509.06 of the Standard Specifications. Cored holes shall be roughened or scored per manufacturer's recommendations. Maximum depth of hole shall not exceed 6".
 - Slope of haunch typical at piers and abutments.
 - For v(E) and v1(E) bar details, see sheet 14 of 20.
 - For Bicycle and Parapet Railing details, see sheet 13 of 20. For post spacing, see sheet 2 of 20.
 - v(E) bars not used outside the limits of Bridge Approach Slab. PCC Sidewalk Special, 10" shall be used in place of Bridge Approach Slab on North end of East Abutment.

STATE OF ILLINOIS
DEPARTMENT OF TRANSPORTATION

SUPERSTRUCTURE DETAILS
STRUCTURE NO. 019-0048

SHEET NO. 10 OF 20 SHEETS

F.A.P. RTE.	SECTION	COUNTY	TOTAL SHEETS	SHEET NO.
307	126(B)-1/BR	DEKALB	62	28
				CONTRACT NO. 66987
ILLINOIS FED. AID PROJECT				

QATES ASSOCIATES
Engineering & Architecture

1500 Lakeside Drive, Suite 100
Columbia, IL 62202
Tel: 618.945.2000
Fax: 618.945.7200
www.qatesassociates.com

USER NAME	DESIGNED	REVISIONS
JAD	JAD	
SJN	SJN	
JAD	JAD	
SJN	SJN	