

STANDARD BAR SPLICER ASSEMBLY

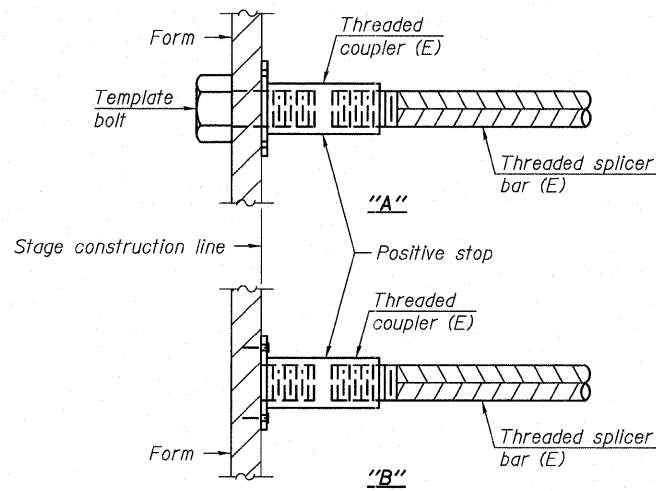
Minimum Lap Lengths					
Bar size to be spliced	Table 1	Table 2	Table 3	Table 4	Table 5
3, 4	1'-5"	1'-11"	2'-1"	2'-4"	2'-3"
5	1'-9"	2'-5"	2'-7"	2'-11"	2'-10"
6	2'-1"	2'-11"	3'-1"	3'-6"	3'-4"
7	2'-9"	3'-10"	4'-2"	4'-8"	4'-6"
8	3'-8"	5'-1"	5'-5"	6'-2"	5'-10"
9	4'-7"	6'-5"	6'-10"	7'-9"	7'-5"

- Table 1: Black bar, 0.8 Class C
- Table 2: Black bar, Top bar lap, 0.8 Class C
- Table 3: Epoxy bar, 0.8 Class C
- Table 4: Epoxy bar, Top bar lap, 0.8 Class C
- Table 5: Epoxy bar, Top bar lap, Class B

Threaded splicer bar length = min. lap length + 1 1/2" + thread length

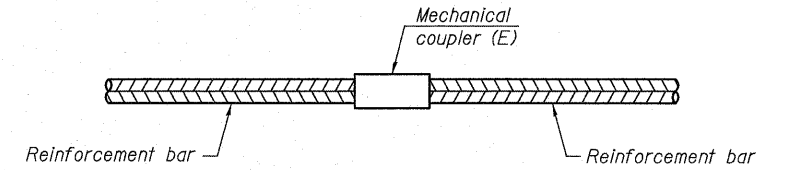
* Epoxy not required on Bar Splicer Assembly components used in conjunction with black bars.

Location	Bar size	No. assemblies required	Table for minimum lap length
Top of slab	#5	62	Table 4
Bottom of Slab	#5	105	Table 3
Top of Appr. Slab	#4	50	Table 4
Bottom of Appr. Slab	#5	92	Table 3
Appr. Footing	#5	80	Table 3
Abutment Cap	#7	26	Table 4
Pier Cap	#7	18	Table 4
Pier Stem	#5	48	Table 4



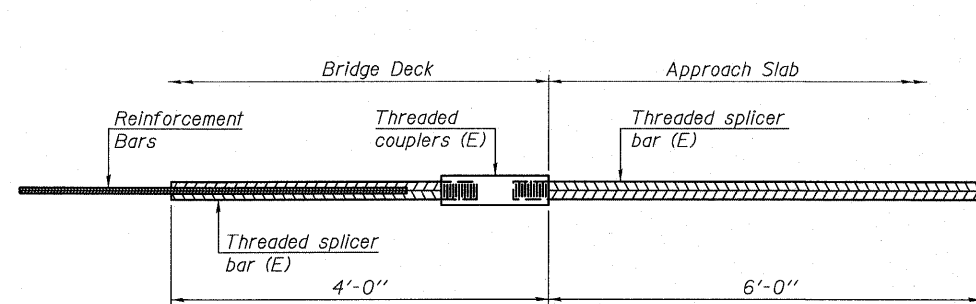
INSTALLATION AND SETTING METHODS

- "A" : Set bar splicer assembly by means of a template bolt.
- "B" : Set bar splicer assembly by nailing to wood forms or cementing to steel forms.
- (E) : Indicates epoxy coating.



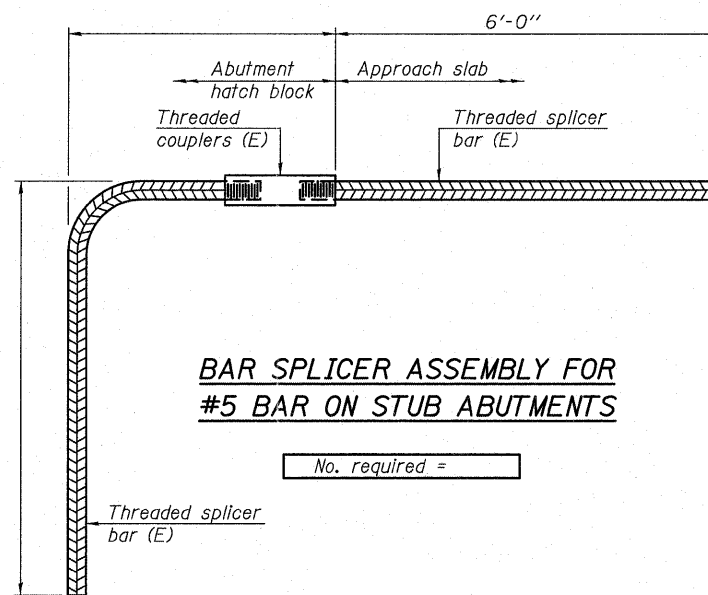
STANDARD MECHANICAL SPLICER

Location	Bar size	No. assemblies required



BAR SPLICER ASSEMBLY FOR #5 BAR ON INTEGRAL OR SEMI-INTEGRAL ABUTMENTS

No. required =



BAR SPLICER ASSEMBLY FOR #5 BAR ON STUB ABUTMENTS

No. required =

NOTES

- Splicer bars shall be deformed with threaded ends and have a minimum 60 ksi yield strength.
- All reinforcement shall be lapped and tied to the splicer bars.
- Bar splicer assemblies shall be epoxy coated according to the requirements for reinforcement bars. See Section 508 of the Standard Specifications.
- See special provision for Mechanical Splicers.
- See approved list of bar splicer assemblies and mechanical splicers for alternatives.

BSD-1

7-1-10

	ILLINOIS Eastport Business Center 1 100 Lister Court, Suite 100 Collinsville, IL 62234 Tel: 618.345.2200 Fax: 618.345.7200 www.damesassociates.com	MISSOURI Lakeside One Building 700 Olive, Suite 1000 St. Louis, MO 63101 Tel: 314.598.6881 Fax: 314.598.9850	USER NAME = PLOT SCALE = PLOT DATE =	DESIGNED - JAD CHECKED - SJN DRAWN - JAD CHECKED - SJN	REVISED - REVISED - REVISED - REVISED -	STATE OF ILLINOIS DEPARTMENT OF TRANSPORTATION	BAR SPLICER ASSEMBLY AND MECHANICAL SPLICER DETAILS STRUCTURE NO. 019-0048	F.A.P. RTE. 307	SECTION 126(B)-1(BR)	COUNTY DEKALB	TOTAL SHEETS 62	SHEET NO. 36
	SHEET NO. 18 OF 20 SHEETS							CONTRACT NO. 66987 ILLINOIS FED. AID PROJECT				