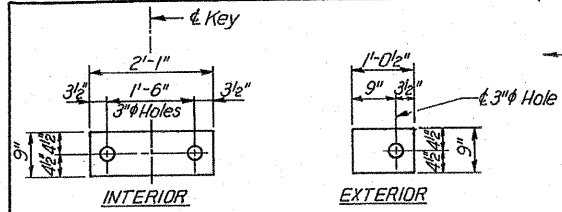
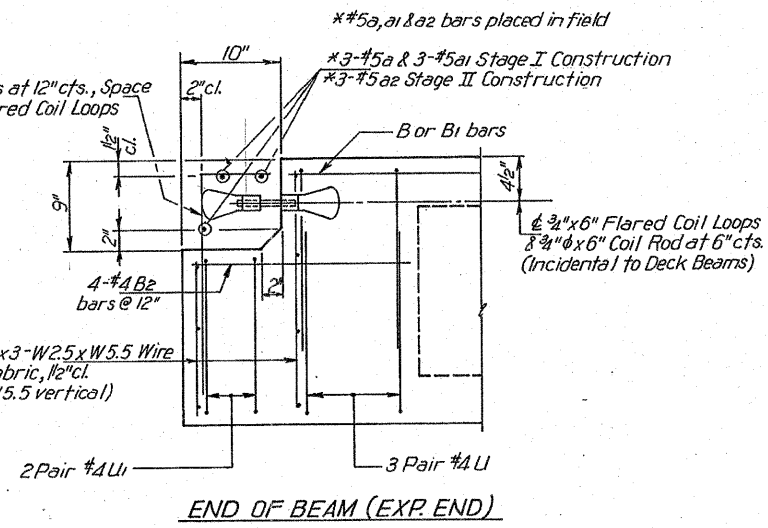
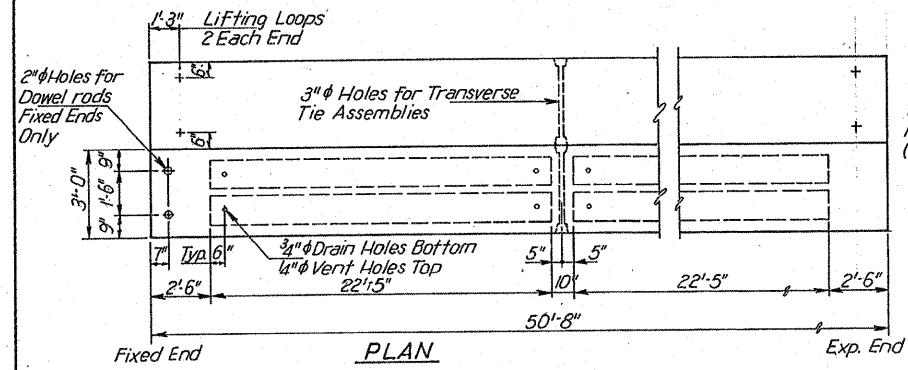
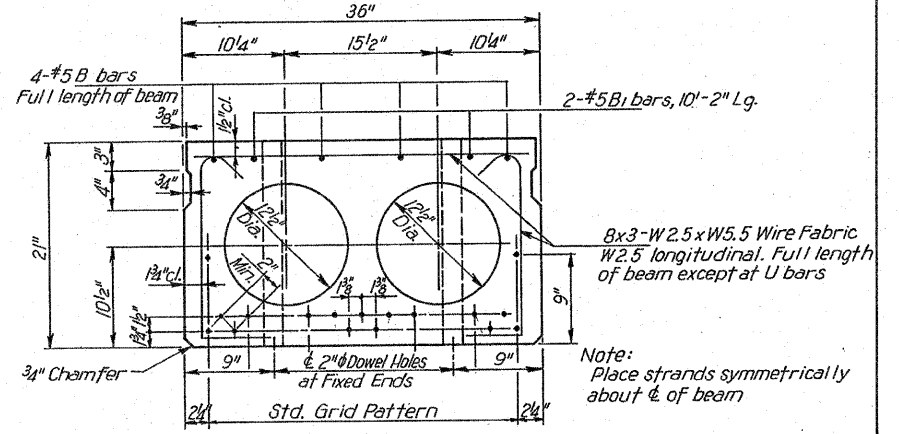
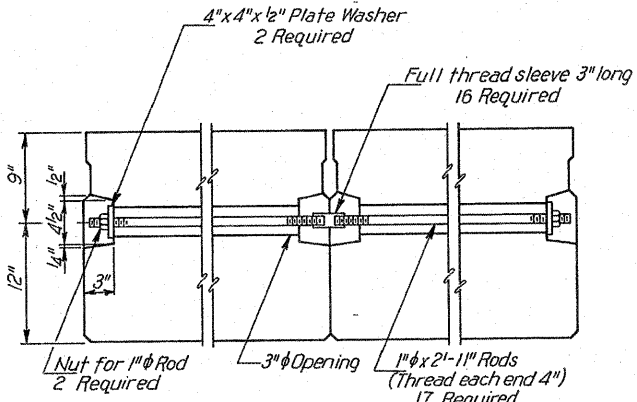
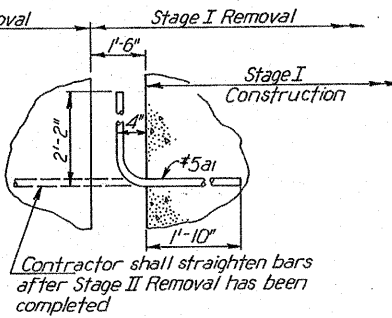


STATE OF ILLINOIS
DEPARTMENT OF TRANSPORTATION

ROUTE NO.	SECTION	COUNTY	TOTAL SHEETS	SHEET NO.	SHEET NO. 3
S.S.L. R.A. 17	126B-1R	DEKALB	16	11	SHEETS 8
FED. ROAD DIST. NO. 1	ILLINOIS	FED. AID PROJECT			

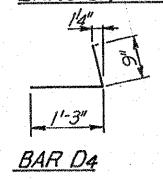
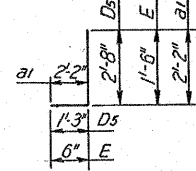
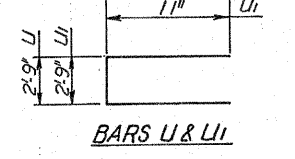


Note: Bar a1 shall meet the requirements of AASHTO M31 or M53 except the yield stress shall not be less than 33,000psi and not more than 45,000psi



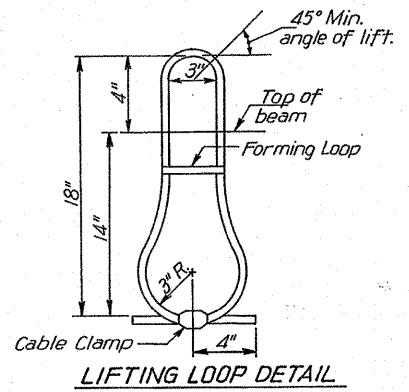
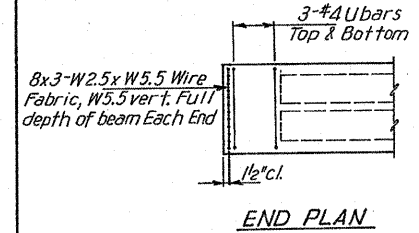
TYPICAL SECTION

17-1/2" diameter strands. Each strand stressed to 28,900 lbs. 6 strands 1 3/4" up, 9 strands 3/4" up and 2 strands 9" up



BILL OF MATERIALS				
BAR	No.	SIZE	LENGTH	SHAPE
a	3	#5	23'-9"	—
a1	3	#5	4'-4"	┌
a2	3	#5	26'-9"	—
Class X Concrete			Cu. Yds.	1.2
Reinforcement Bars			Lbs.	170

Note: Bars listed in bill of materials are paid separately, all other reinforcement and incidental material provided in P.R.C. beams shall be considered incidental to P.R.C. beams. For additional reinforcement in beams at sidewalk area see Section A-A, Sht. No. 4



NOTES

Prestressing steel shall be non-galvanized high strength, stress-relieved 7-wire strand, Grade 270. The nominal diameter shall be 1/2" and the nominal cross-sectional area shall be 0.153 sq. in.

Lifting loops shall be 3/8" diameter, 6x25 class wire rope with fiber core and shall have a minimum ultimate tensile strength of 33,000 lbs.

The 1" rods in the transverse tie assembly shall be tightened to a snug fit and the threads set. Pockets that receive transverse tie bar on outside shall be filled with grout after transverse tie assembly is in place.

Reinforcement bars shall conform to AASHTO M-31 or M-53, Grade 60.

The bearing seat surfaces shall be adjusted by shimming to assure firm and even bearing. Two 1/8" fabric adjusting shims of the dimensions of the Exterior Bearing Pad shall be provided for each bearing.

Keyway surfaces shall be cleaned to remove form oil or other bond breaking material prior to shipment of the beams. Cleaning shall be done by sandblasting the keyway areas between top of the beam and the bottom edge of the key.

REVISIONS	
NAME	DATE

BEAM DETAILS
F.A. ROUTE 17 (ILL. 64)
SECTION 126 (B-1) R
DEKALB COUNTY
STA. 78+50.00

SCALE: VERT. HORIZ.
DATE 7-22-81

DESIGNED	J.M.P.
CHECKED	S.F.
DRAWN	K.A.C.
CHECKED	J.M.P.