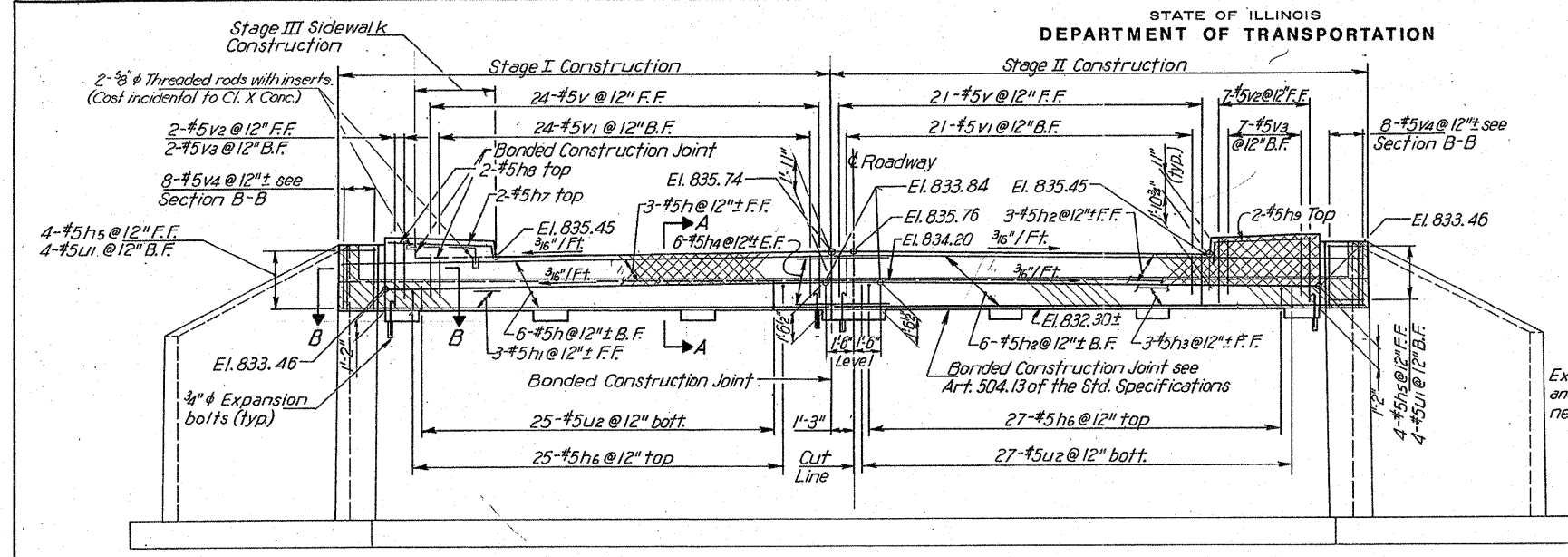
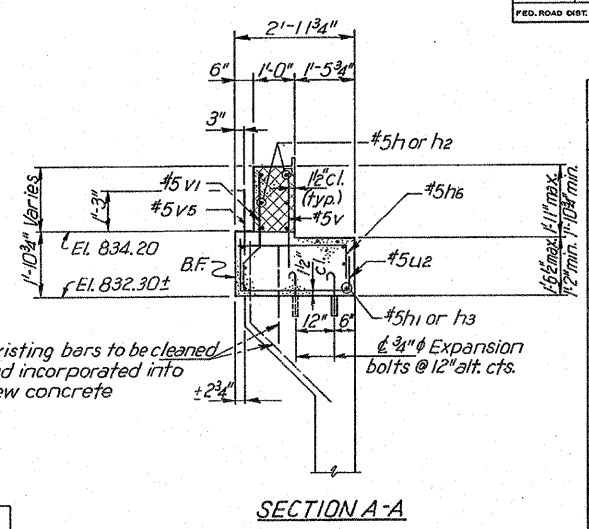


STATE OF ILLINOIS
DEPARTMENT OF TRANSPORTATION

ROUTE NO.	SECTION	COUNTY	TOTAL SHEETS	SHEET NO.	SHEET NO. 7
P.A. 17	126B-1R	DEKALB	16	15	SHEETS 8
FED. ROAD DIST. NO. 1	ILLINOIS	FED. AID PROJECT			

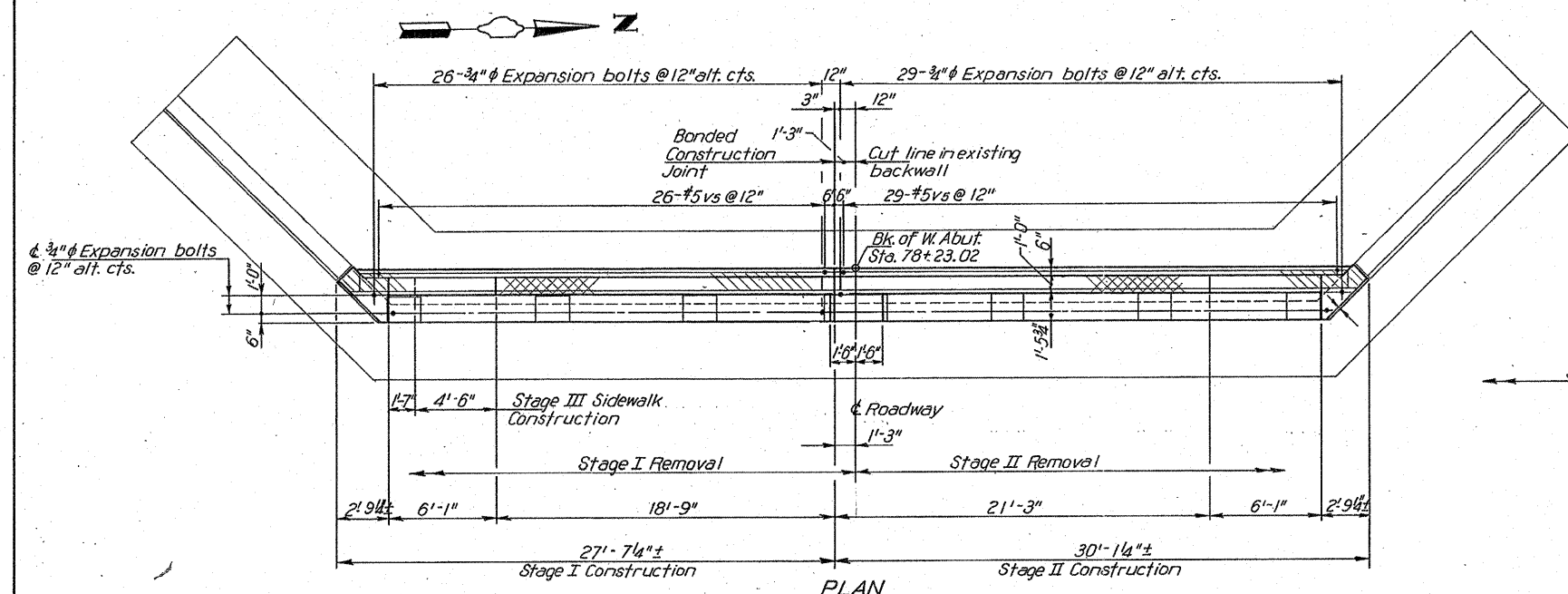


ELEVATION

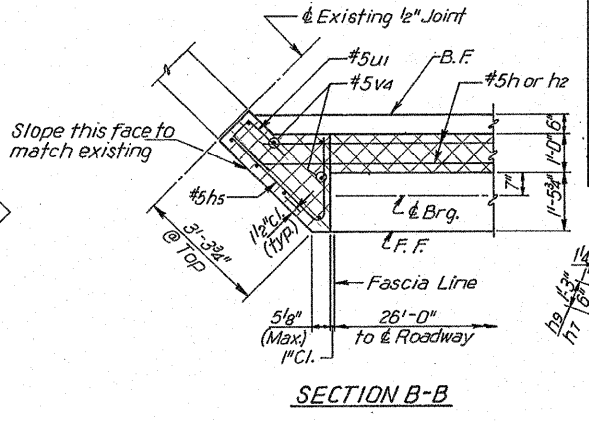


SECTION A-A

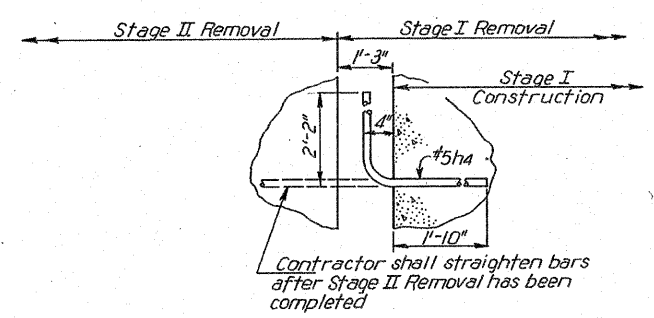
BAR	No.	SIZE	LENGTH	SHAPE
h	9	#5	26'-3"	—
h1	3	#5	25'-0"	—
h2	9	#5	28'-9"	—
h3	3	#5	27'-6"	—
h4	12	#5	4'-4"	┘
h5	8	#5	5'-4"	┘
h6	52	#5	3'-9"	┘
h7	2	#5	4'-9"	┘
h8	2	#5	1'-3"	┘
h9	2	#5	7'-1"	┘
v	45	#5	2'-9"	—
v1	45	#5	3'-3"	┘
v2	9	#5	3'-9"	┘
v3	9	#5	4'-3"	┘
v4	16	#5	3'-6"	—
v5	55	#5	2'-6"	—
u1	8	#5	3'-3"	┘
u2	52	#5	5'-2"	┘
Class X Concrete Cu. Yd. 14.0				
Reinforcement Bars Lbs. 1880				
3/4" Expansion Bolts Each 55				
Concrete Removal Cu. Yd. 1.4				



PLAN



SECTION B-B



DETAIL AT CONSTRUCTION JOINT

LEGEND

Indicates concrete removal, vertical reinforcement extending into removed area shall be cleaned and incorporated into the new construction.

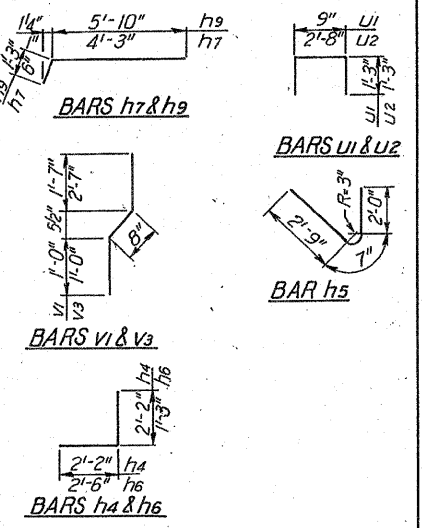
Indicates area to be poured after beams are in place.

Notes:

All exposed edges shall have standard 3/4" chamfers.

Note:

Bar h4 shall meet the requirements of AASHTO M31 or M53 except the yield stress shall not be less than 33,000 psi and not more than 45,000 psi.



DESIGNED	J.M.P.
CHECKED	S.F.
DRAWN	K.A.C.
CHECKED	J.M.P.

REVISIONS	
NAME	DATE

WEST ABUTMENT DETAILS
F.A. ROUTE 17 (ILL. 64)
SECTION 126 (B-1) R
DEKALB COUNTY
STA. 78+50.00

SCALE: VERT.
HORIZ.
DATE 7-22-81