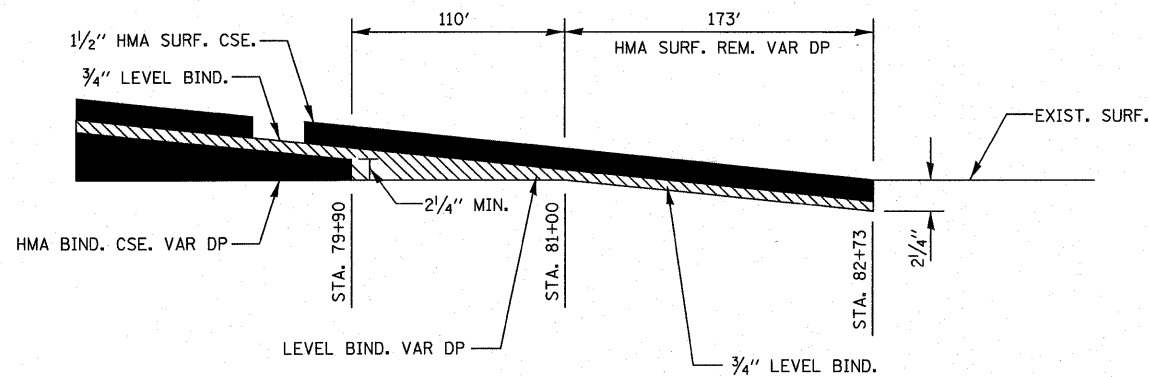
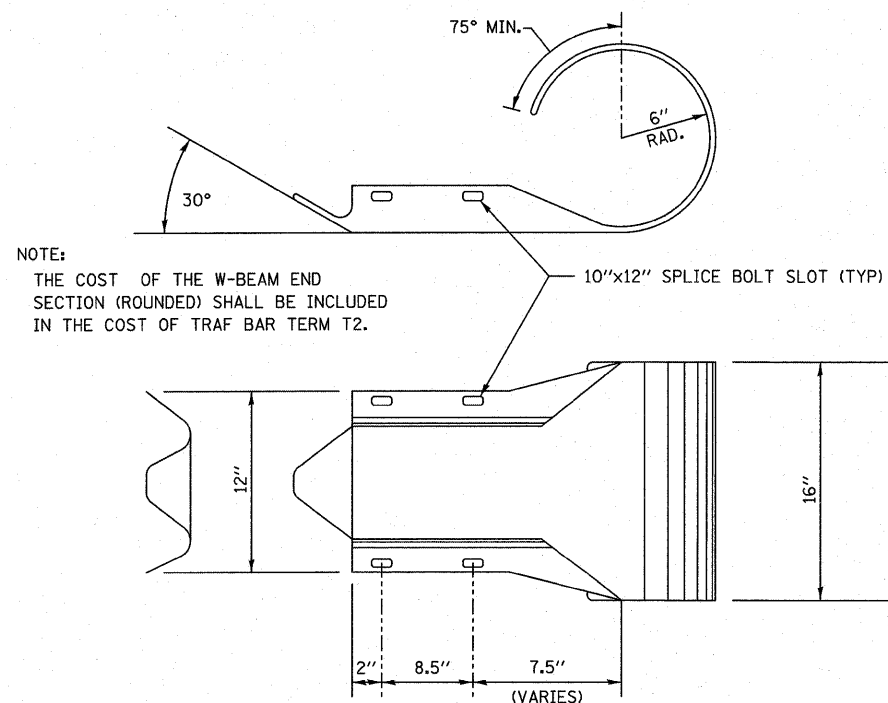


HMA PAVEMENT THICKNESS TAPER - WEST OF BRIDGE
NOT TO SCALE

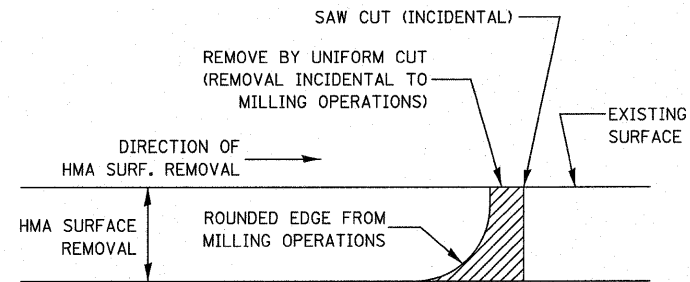


HMA PAVEMENT THICKNESS TAPER - EAST OF BRIDGE
NOT TO SCALE



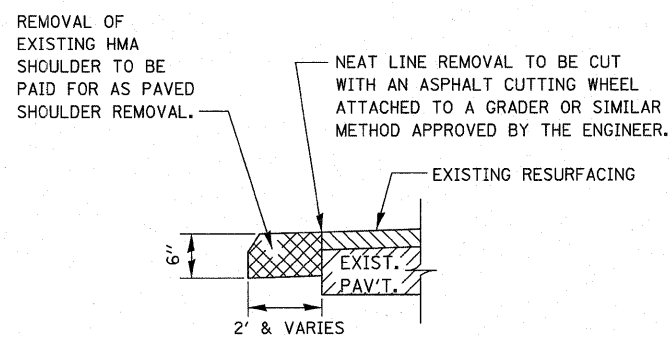
NOTE:
THE COST OF THE W-BEAM END SECTION (ROUNDED) SHALL BE INCLUDED IN THE COST OF TRAF BAR TERM T2.

W-BEAM END SECTION (ROUNDED)
NOT TO SCALE

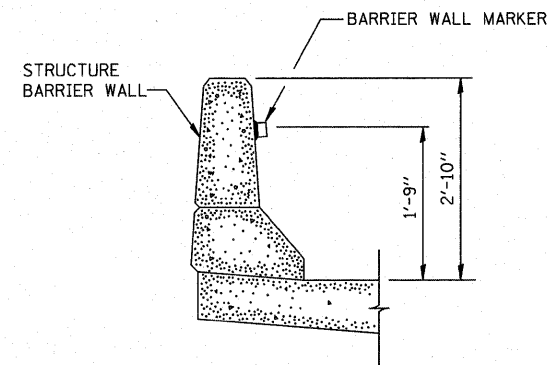


NOTE:
WHEN MILLING OPERATIONS PRODUCE A ROUNDED EDGE, THEN A SAW CUT SHALL BE USED TO MANUFACTURE A PERPENDICULAR EDGE AS SHOWN IN THE DETAIL. THE ENGINEER SHALL BE THE SOLE JUDGE CONCERNING THE USE OF THIS DETAIL.

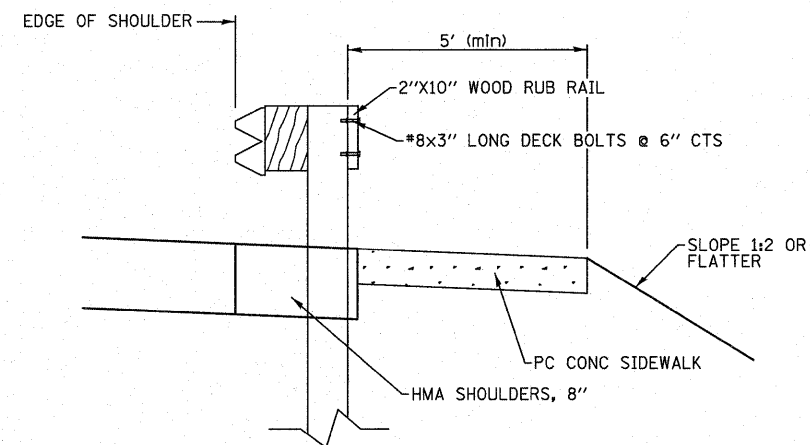
HMA SURFACE REMOVAL DETAIL



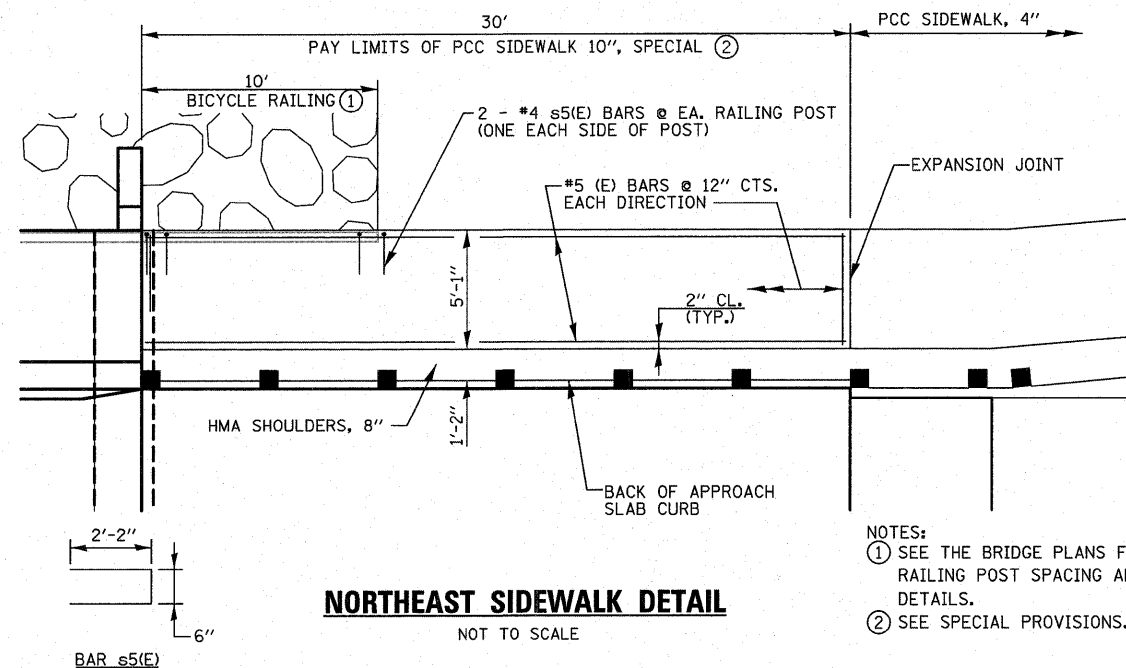
REMOVAL OF EXISTING HMA SHOULDER



BARRIER WALL MARKER



WOOD RAIL DETAIL
NOT TO SCALE



NORTHEAST SIDEWALK DETAIL
NOT TO SCALE

NOTES:
① SEE THE BRIDGE PLANS FOR BICYCLE RAILING POST SPACING AND ADDITIONAL DETAILS.
② SEE SPECIAL PROVISIONS.

FILE NAME = sheets01.dgn	USER NAME = randy	DESIGNED -	REVISED -	STATE OF ILLINOIS DEPARTMENT OF TRANSPORTATION	MISCELLANEOUS DETAILS			F.A.P. RTE. 307	SECTION 126 (B-1)BR	COUNTY DEKALB	TOTAL SHEETS 62	SHEET NO. 53
	PLOT SCALE = 20,0000' / IN.	DRAWN -	REVISED -		SCALE: NTS	SHEET NO. 1 OF 2 SHEETS	STA.	TO STA.	CONTRACT NO. 66987			
	PLOT DATE = 8/17/2011	CHECKED -	REVISED -						ILLINOIS FED. AID PROJECT			
		DATE -	REVISED -									