

SECTION THRU INTEGRAL ABUTMENT
(Horiz. dim. @ Rt. L's)

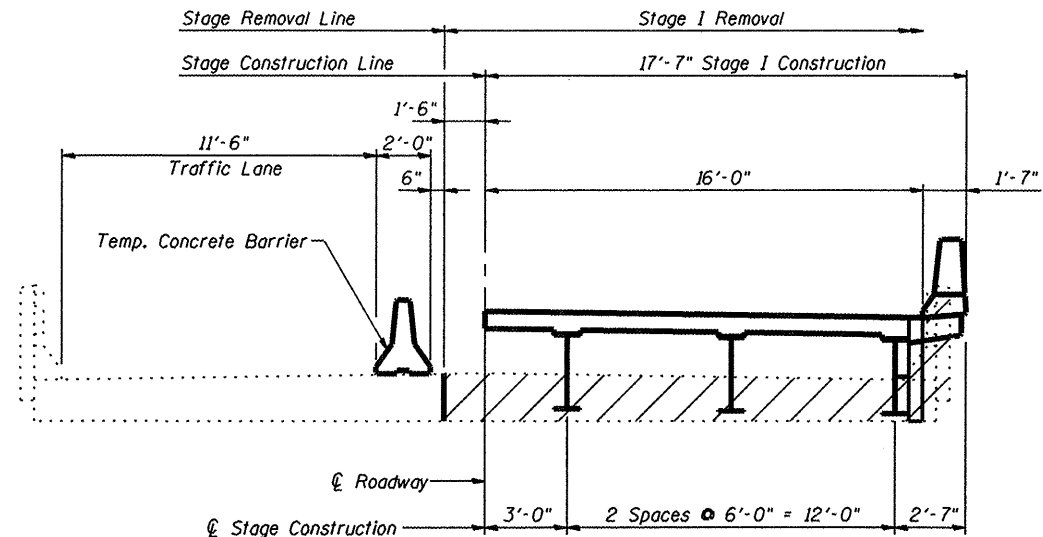
* Included in the cost of Pipe Underdrains for Structures.

Note:

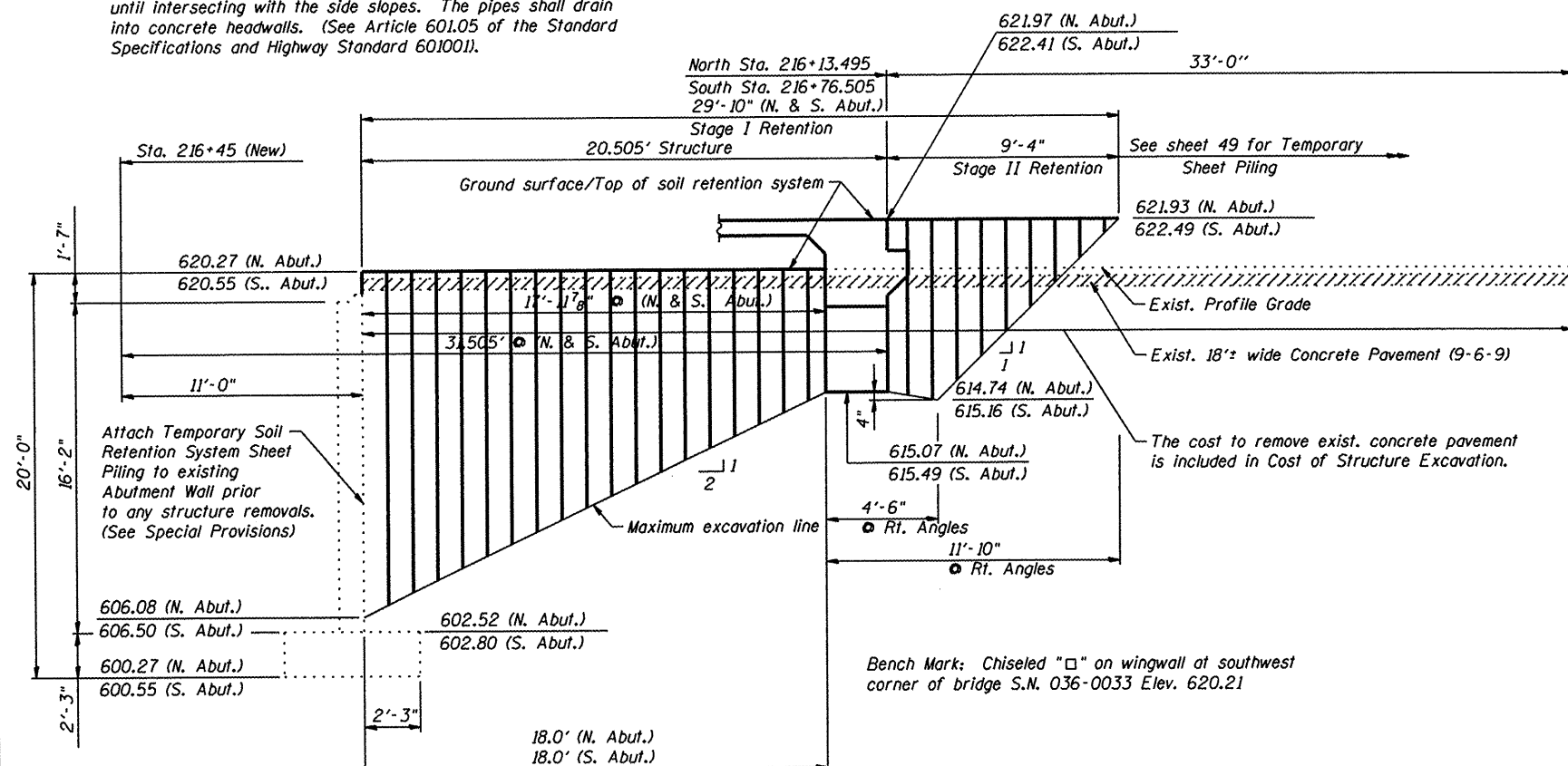
All drainage system components shall extend to 2'-0" from the end of each wingwall except an outlet pipe shall extend until intersecting with the side slopes. The pipes shall drain into concrete headwalls. (See Article 601.05 of the Standard Specifications and Highway Standard 601001).

INDEX OF SHEETS

Sheet No.	Items:
1	General Plan & Elevation
2	Stage Construction Details
3	Temporary Concrete Barrier
4	Top of Slab Elevations
5	Top of Slab Elevations
6	Superstructure
7	Superstructure Details
8	Diaphragm Details
9	Structural Steel
10	North & South Abutments
11	Bar Splicer Assembly Details
12	Cantilever Forming Brackets
13	Bridge Approach Slab Details
14	Bridge Approach Slab Details
15	Boring Logs

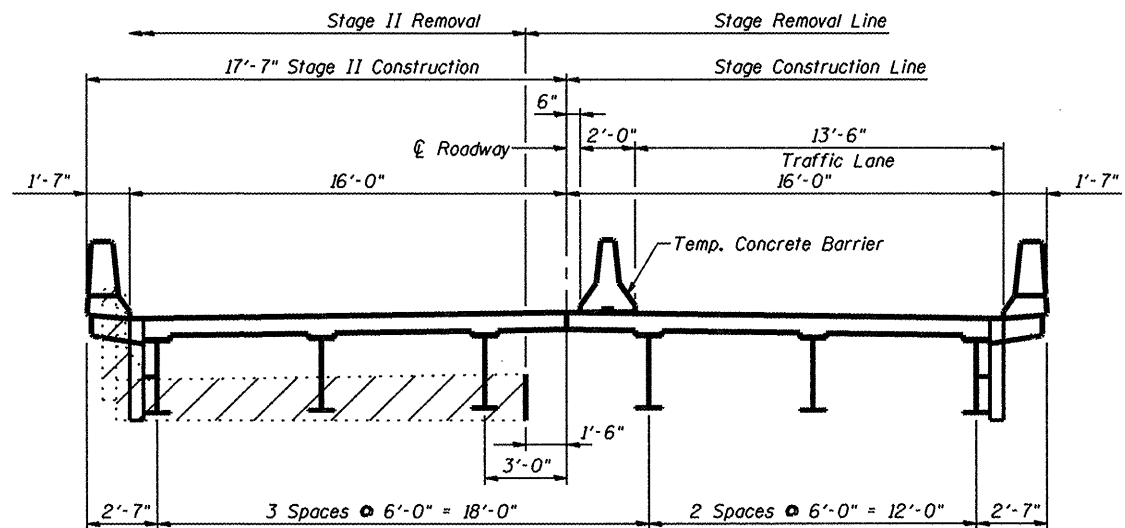


STAGE I CONSTRUCTION & REMOVAL
(Looking South)



TEMPORARY SOIL RETENTION SYSTEM

A cantilevered sheet piling design does not appear feasible and additional members or other retention systems may be necessary. The Contractor shall submit a temporary soil retention system design including plan details and calculations for review and acceptance by the Engineer.



STAGE II CONSTRUCTION & REMOVAL
(Looking South)

See Roadway Plans for quantity of Temporary Concrete Barrier.



FILE NAME: #FILEL*	USER NAME: #USER*	DESIGNED: -	REVISED: -	STATE OF ILLINOIS DEPARTMENT OF TRANSPORTATION	STAGE CONSTRUCTION DETAILS IL 94 OVER WOLF CREEK S.N. 036-0055	F.A.P. RTE. 534	SECTION 109B (BR3)	COUNTY HENDERSON	TOTAL SHEETS 88	SHEET NO. 27		
	PLOT SCALE: #SCALE*	CHECKED: -	REVISED: -			SCALE:	SHEET NO. 2 OF 15 SHEETS	STA. 216+45	ILLINOIS FED. AID PROJECT			
		DATE: -	REVISED: -									