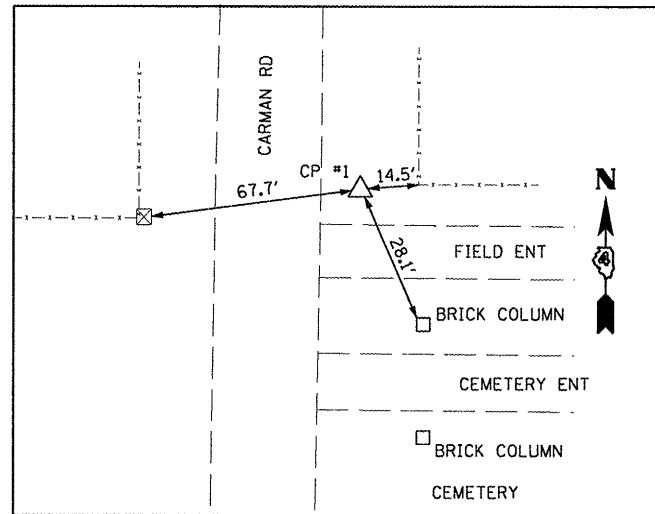
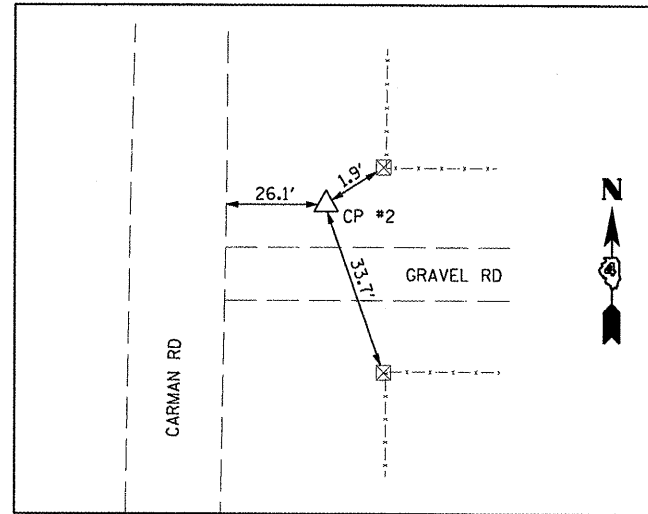


BENCH MARK
RAILROAD SPIKE IN POWER POLE, ON THE WEST SIDE
OF FAP RTE 522 (CARMAN RD). FIRST POLE SOUTH OF
EXISTING BRIDGE. ELEVATION = 533.59



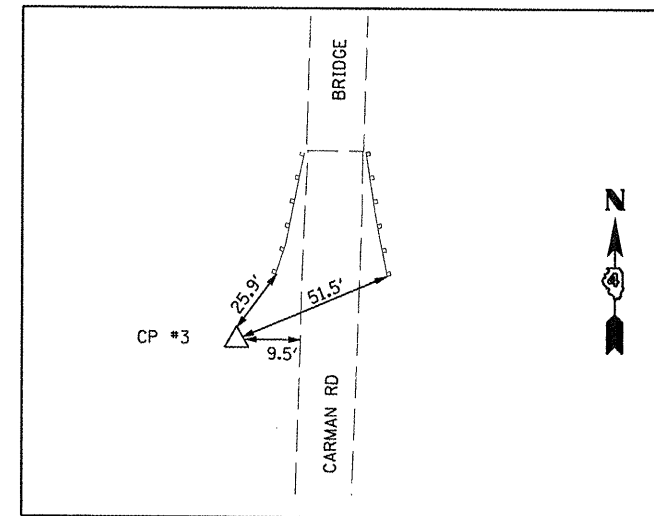
CP #1
#5 REBAR

STA UNKNOWN
N. 1,486,911.2348
E. 2,050,027.7325
ELEV. 542.6917



CP #2
#5 REBAR

STA 389+10.18, 37.20' LT.
N. 1,474,280.3740
E. 2,046,187.9398
ELEV. 534.7922



CP #3
#5 REBAR

STA 380+54.28, 21.88' RT.
N. 1,475,136.5568
E. 2,046,142.5247
ELEV. 539.60

HURST-ROSCHKE ENGINEERS, INC.
HILLSBORO, ILLINOIS 62049
(217)532-3959 FAX (217)532-3212
HR# 190-1785

HR
HURST-ROSCHKE
ENGINEERS, INC.

STATE OF ILLINOIS
DEPARTMENT OF TRANSPORTATION

ALIGNMENT, TIES & BENCHMARK

F.A.P. RTE.	SECTION	COUNTY	TOTAL SHEETS	SHEET NO.
522	(14-1-1B)BR	HENDERSON	70	8
CONTRACT NO. 68298				

SCALE: 1:20 SHEET NO. 1 OF 1 SHEETS STA. TO STA.

FED. ROAD DIST. NO. 4 ILLINOIS FED. AID PROJECT

FILE NAME =	USER NAME = #USER#	DESIGNED - JJC	REVISED -
#FILE#		DRAWN - UJ	REVISED -
	PLOT SCALE = #SCALE#	CHECKED - MAR	REVISED -
	PLOT DATE = #DATE#	DATE - 2-26-11	REVISED -