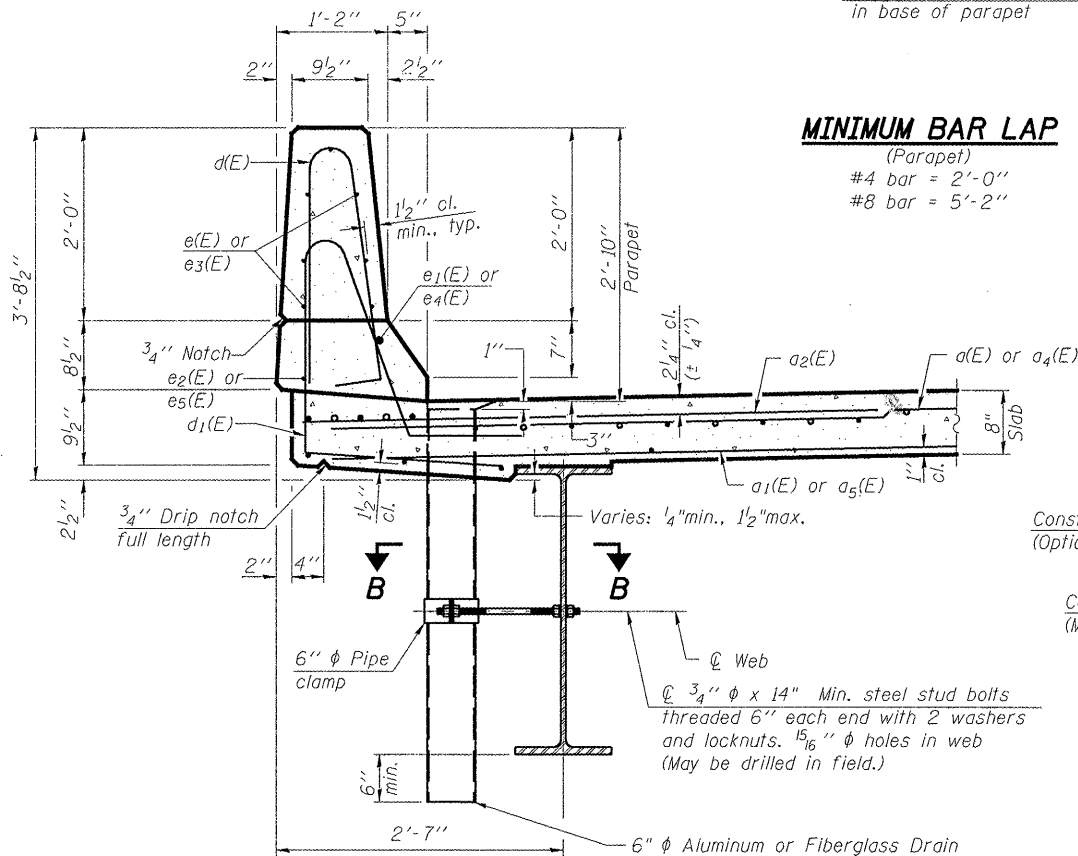


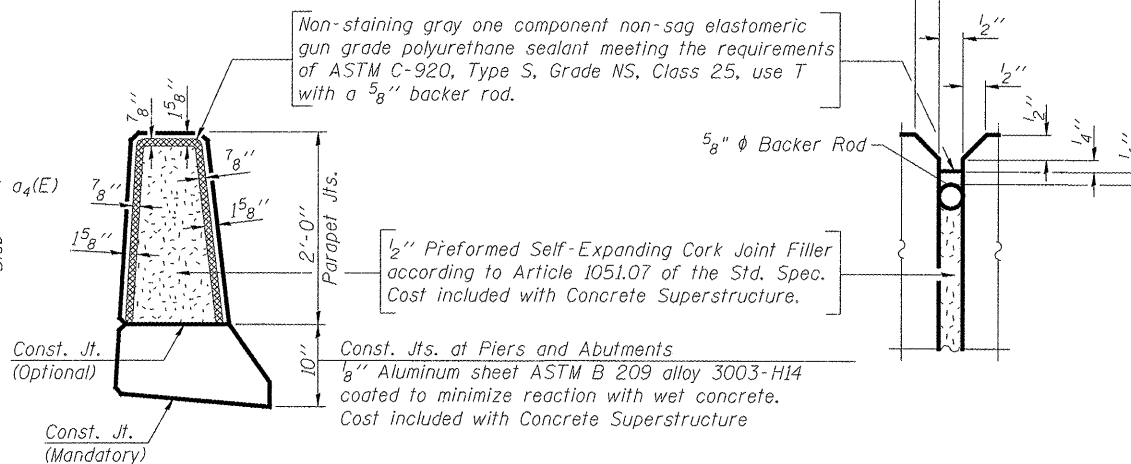
**INSIDE ELEVATION OF PARAPET**



**SECTION THRU PARAPET**

**MINIMUM BAR LAP**

(Parapet)  
 #4 bar = 2'-0"  
 #8 bar = 5'-2"



**PARAPET JOINT DETAILS**

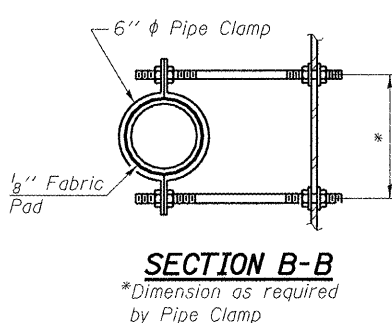
**Notes:**

The exterior surfaces of the floor drains shall be painted with the finish coat as specified in the special provisions for Cleaning and Painting New Metal Structures. The exterior surfaces of the drains shall be cleaned according to Society of Protective Coatings Spec. SSPC-SPI prior to painting.  
 Fiberglass pipe shall conform to ASTM D 2996, with short-time rupture strength hoop tensile stress of 30,000 p.s.i. minimum.  
 Galvanize clamping device according to AASHTO M232. Cost of clamping device and inserts is included with Floor Drains.

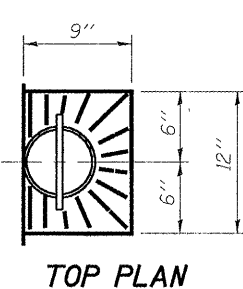
**SUPERSTRUCTURE BILL OF MATERIAL**

Bar	No.	Size	Length	Shape
a(E)	360	#5	13'-11"	—
a1(E)	252	#5	13'-9"	—
a2(E)	718	#6	6'-6"	—
a3(E)	4	#5	16'-3"	—
a4(E)	360	#5	19'-11"	—
a5(E)	252	#5	19'-9"	—
a6(E)	4	#5	23'-2"	—
b(E)	304	#5	28'-5"	—
b1(E)	136	#6	24'-0"	—
b2(E)	279	#5	25'-7"	—
d(E)	460	#5	5'-7"	┌
d1(E)	460	#5	7'-4"	┌
e(E)	56	#4	18'-5"	—
e1(E)	8	#8	21'-2"	—
e2(E)	8	#4	19'-7"	—
e3(E)	126	#4	14'-8"	—
e4(E)	12	#8	24'-11"	—
e5(E)	12	#4	23'-4"	—
m(E)	10	#6	16'-6"	—
m1(E)	12	#6	7'-9"	—
m2(E)	10	#6	5'-3"	—
m3(E)	4	#6	2'-6"	—
m4(E)	2	#6	1'-11"	—
m5(E)	10	#6	23'-5"	—
m6(E)	16	#6	8'-5"	—
m7(E)	2	#6	2'-11"	—
m8(E)	2	#6	6'-6"	—
s(E)	72	#5	5'-5"	└
s1(E)	62	#4	8'-4"	└
v(E)	72	#5	3'-10"	└
Reinforcement Bars, Epoxy Coated			Pound	61,815
Concrete Superstructure			Cu. Yds.	254.9

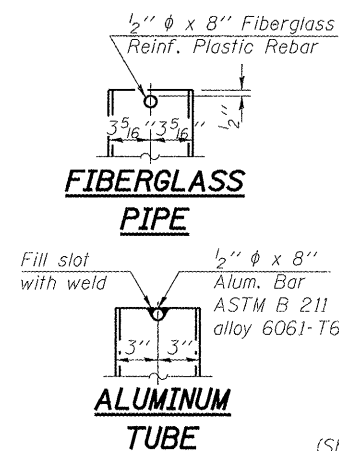
Bars indicated thus 1x2-#5 etc. indicates 1 line of bars with 2 lengths per line.



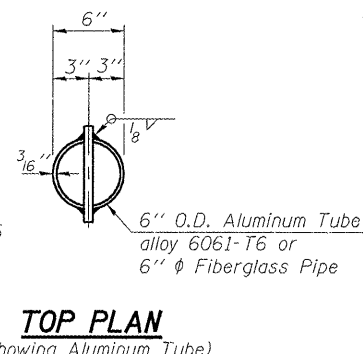
**SECTION B-B**  
 \*Dimension as required by Pipe Clamp



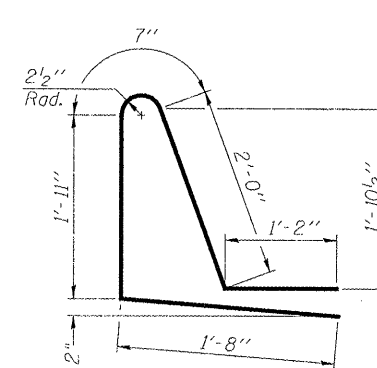
**TOP PLAN**



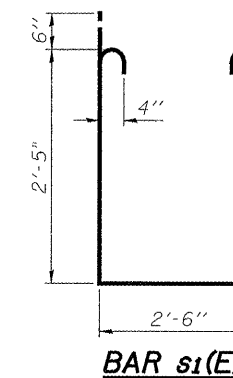
**ALUMINUM TUBE TOP PLAN**  
 (Showing Aluminum Tube)



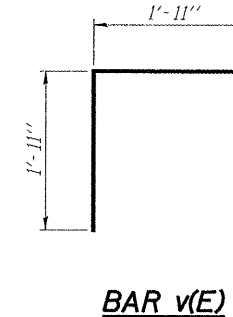
**BAR d(E)**



**BAR d1(E)**



**BAR s1(E)**



**BAR v(E)**

FILE NAME =	USER NAME =	DESIGNED - JSP	REVISED -
		CHECKED - CJC	REVISED -
		DRAWN - UJ	REVISED -
		CHECKED - RVB	REVISED -

F.A.P. RTE.	SECTION	COUNTY	TOTAL SHEETS	SHEET NO.
522	(14-1-B1) BR	HENDERSON	70	24
			CONTRACT NO. 68298	
ILLINOIS FED. AID PROJECT				