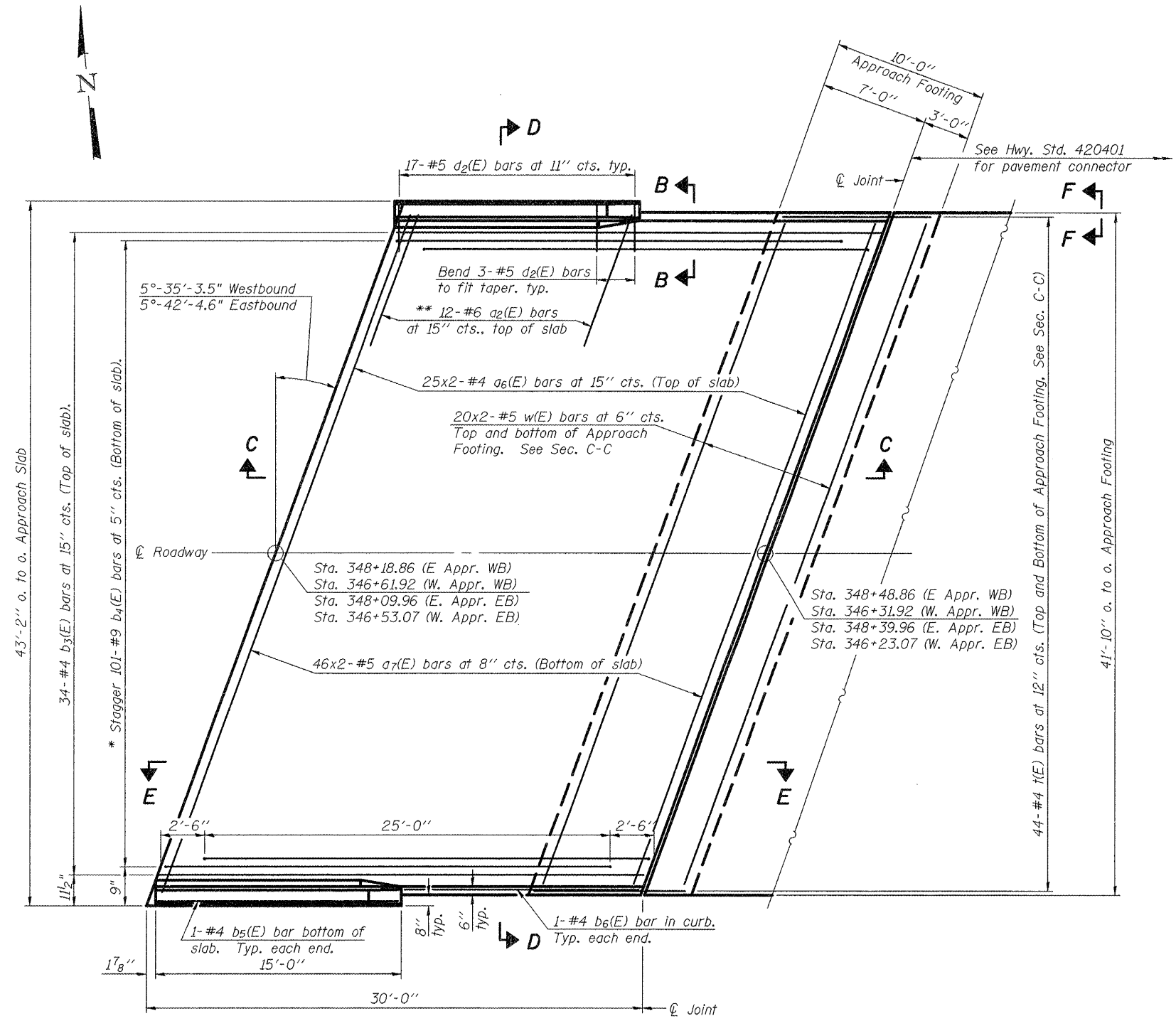


Notes:  
 See sheet 14 of 32 for Sections C-C & D-D and View E-E.  
 a<sub>6</sub>(E) and a<sub>7</sub>(E) bar spacings measured along  $\varnothing$  Rdwy.  
 Bars indicated thus 25x2-#4 etc. indicates 25 lines of bars with 2 lengths per line.



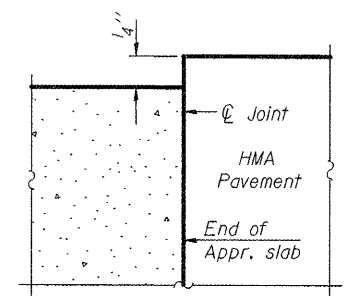
**PLAN**

(E. Appr. for EB & WB Shown  
 W. Appr. for EB and WB Similar)

- \* Tilt #9 b<sub>4</sub>(E) bars as required to maintain clearance.
- \*\* Space between a<sub>6</sub>(E) bars, typ. each parapet.
- EB = Eastbound
- WB = Westbound

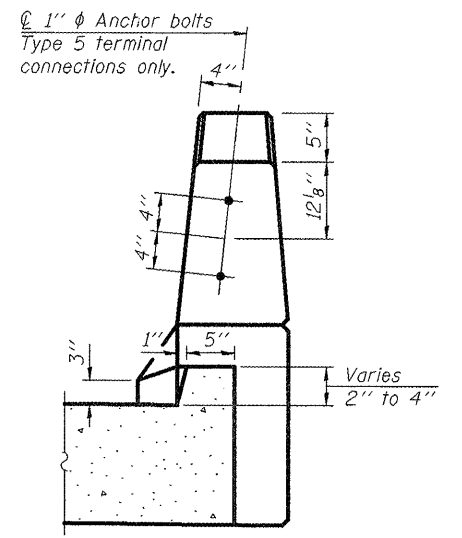
**MIN. BAR LAP**

- #4 Bar = 1'-8"
- #5 Bar = 2'-2"



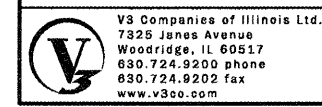
**FLEXIBLE PAVEMENT**

**DETAIL A**



**VIEW B-B**

(Sheet 1 of 2)



V3 Companies of Illinois Ltd.  
 7325 Janes Avenue  
 Woodridge, IL 60517  
 630.724.9200 phone  
 630.724.9202 fax  
 www.v3co.com

FILE NAME: 13 Bridge Approach Slab Details-1.dgn	DESIGNED: B. Vegrzyn	REVISED -
PLOT SCALE: 1:1	CHECKED: Coombé-Bloxdorf	REVISED -
PLOT DATE: July 1, 2011	DRAWN: B. Vegrzyn	REVISED -
	CHECKED: Coombé-Bloxdorf	REVISED -

**STATE OF ILLINOIS  
 DEPARTMENT OF TRANSPORTATION**

**BRIDGE APPROACH SLAB DETAILS - I  
 STRUCTURE NO. 072-0001 & 072-0002**

SHEET NO. 13 OF 34 SHEETS

F.A.I. RTE.	SECTION	COUNTY	TOTAL SHEETS	SHEET NO.
74	72-6VB	PEORIA	133	56
CONTRACT NO. 68874				
ILLINOIS FED. AID PROJECT				