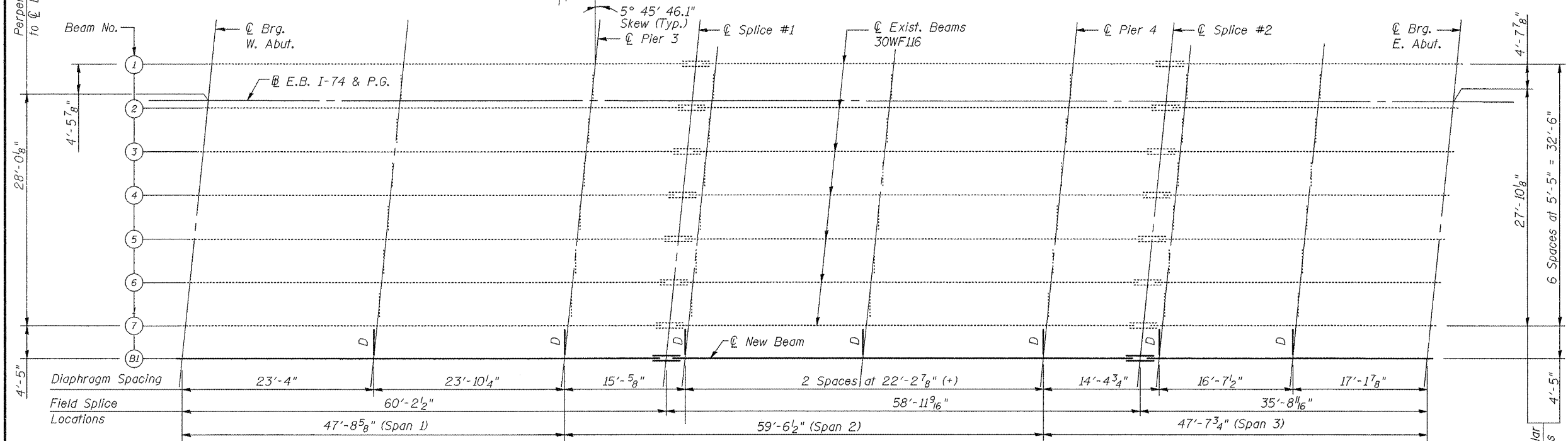
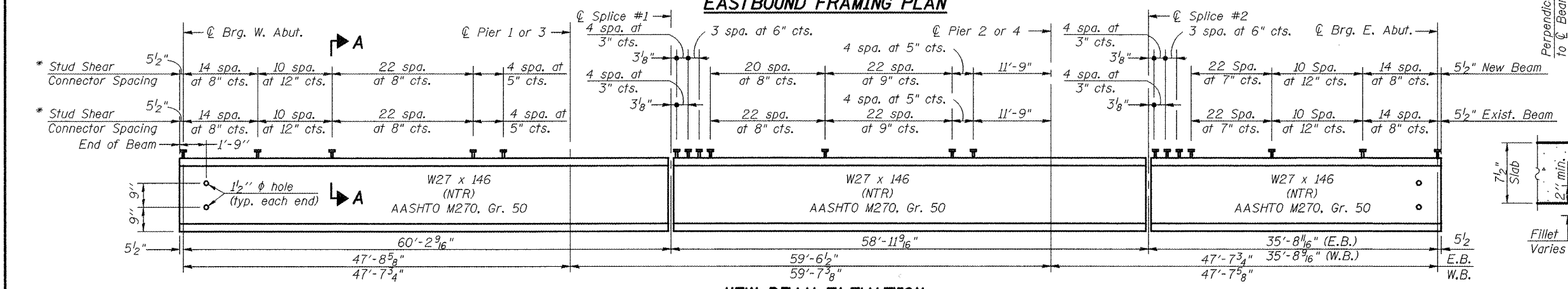


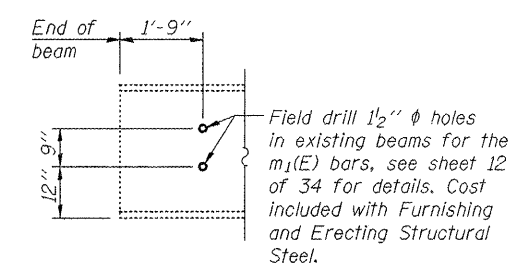
**WESTBOUND FRAMING PLAN**



**EASTBOUND FRAMING PLAN**

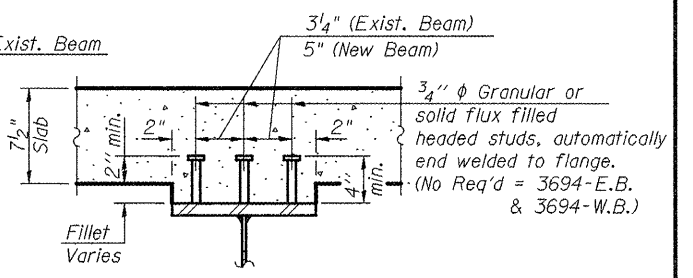


**NEW BEAM ELEVATION**

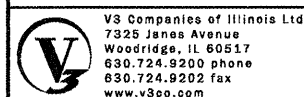


**TYP. END OF EXISTING BEAM**

**NOTES:**  
 Load carrying components designated "NTR" shall conform to the Supplemental Requirements for Notch Toughness, Zone 2.  
 For steel details see sheet 16 of 34.



**SECTION A-A**



FILE NAME: 15 Framing Plan and Elevation.dgn	DESIGNED: B. Vegrzyn	REVISED -
PLOT SCALE: 1:1	CHECKED: Coombe-Bloxdorf	REVISED -
PLOT DATE: July 1, 2011	DRAWN: B. Vegrzyn	REVISED -
	CHECKED: Coombe-Bloxdorf	REVISED -

**STATE OF ILLINOIS  
 DEPARTMENT OF TRANSPORTATION**

**FRAMING PLAN AND ELEVATION  
 STRUCTURE NO. 072-0001 & 072-0002**

SHEET NO. 15 OF 34 SHEETS

F.A.I. RTE. 74	SECTION 72-6VB	COUNTY PEORIA	TOTAL SHEETS 133	SHEET NO. 58
CONTRACT NO. 68874				ILLINOIS FED. AID PROJECT