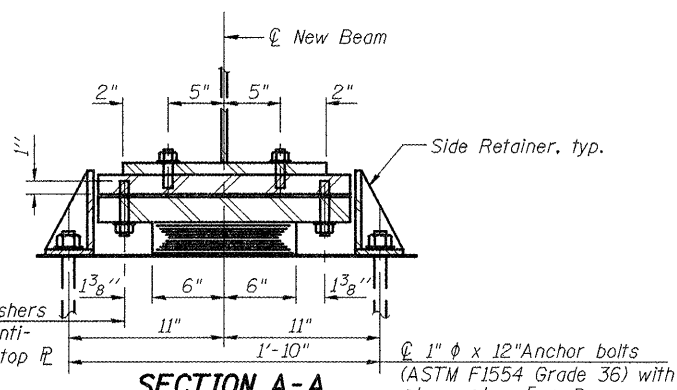


ELEVATION AT ABUT.

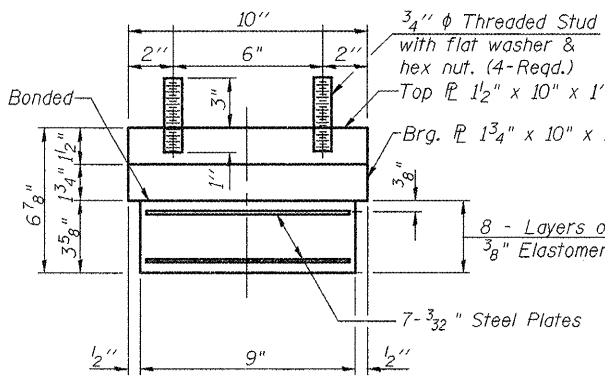


SECTION A-A

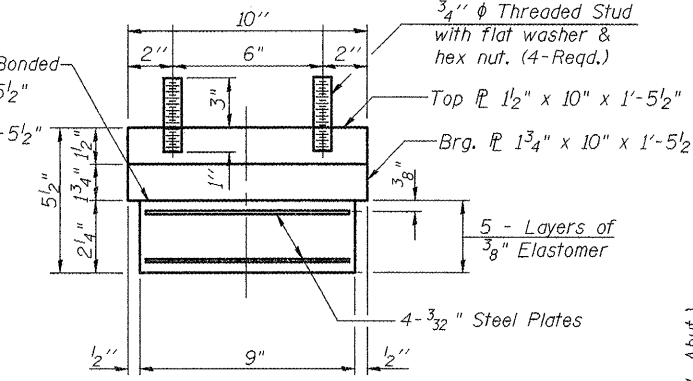
2-3/4" H.S. Bolts w/ Lock Washers (typ. each side) Coat bolts with anti-seize compound Tapped holes in top 7/8" holes in bearing

1" x 12" Anchor bolts (ASTM F1554 Grade 36) with 2 1/4" x 2 1/4" x 5/16" washer under nut

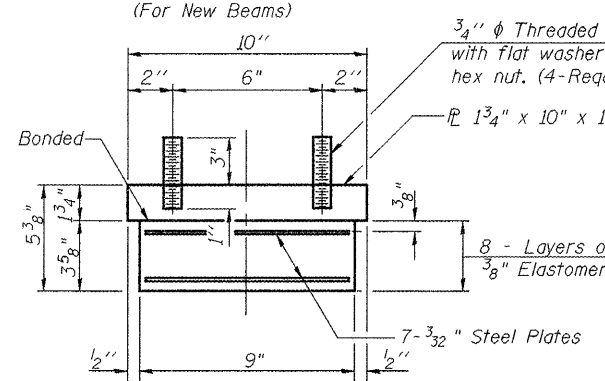
TYPE I ELASTOMERIC EXP. BRG.
(For New Beams)



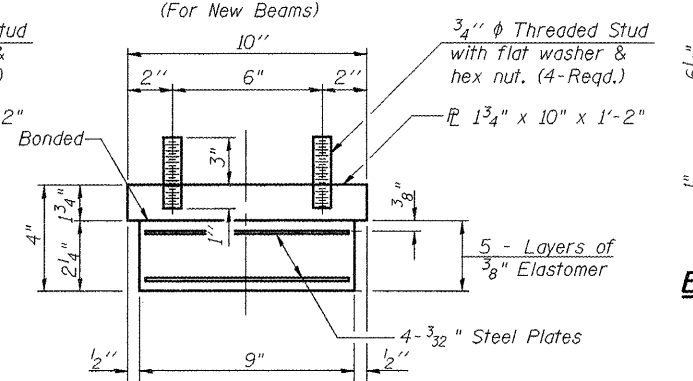
BEARING ASSEMBLY AT W. ABUT.



BEARING ASSEMBLY AT E. ABUT.

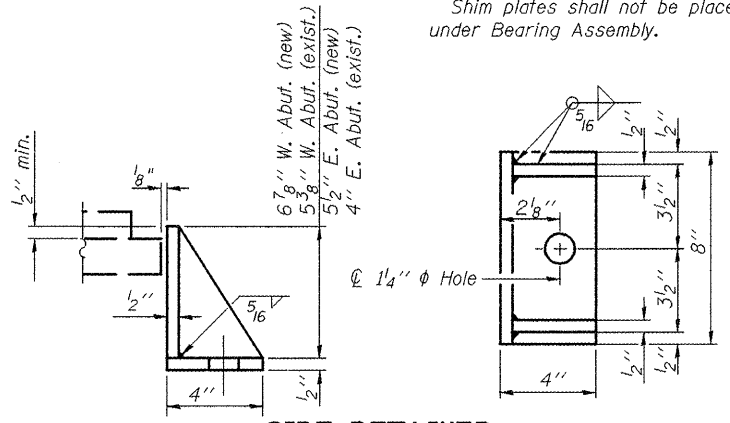


BEARING ASSEMBLY AT W. ABUT.



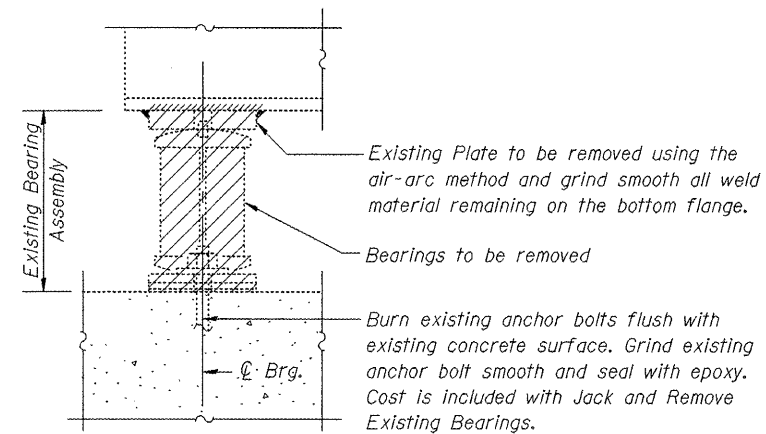
BEARING ASSEMBLY AT E. ABUT.

Note: Shim plates shall not be placed under Bearing Assembly.

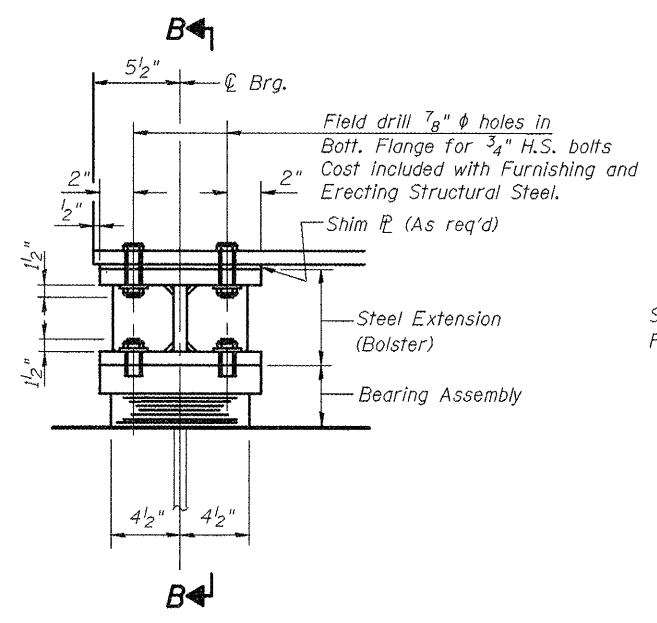


SIDE RETAINER

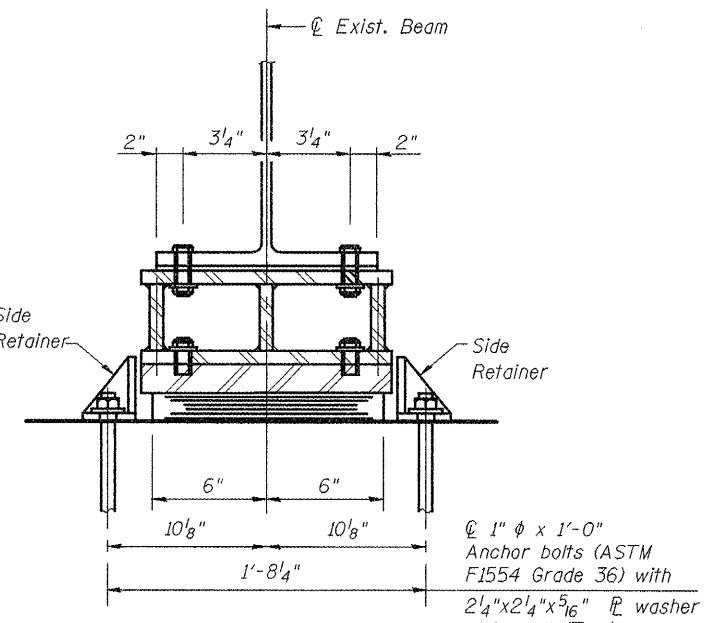
Equivalent rolled angle with stiffeners will be allowed in lieu of welded plates.



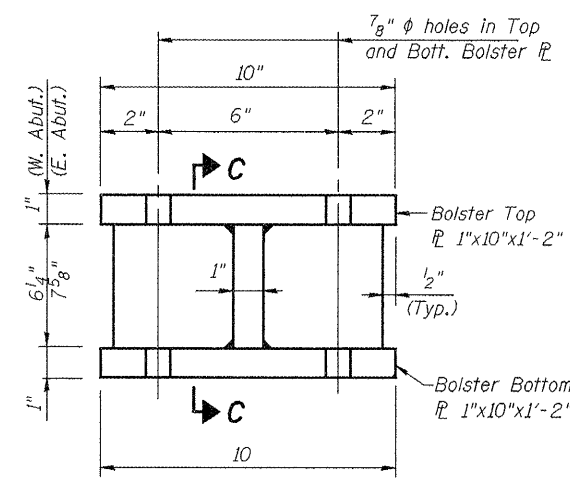
EXISTING BEARING REMOVAL DETAIL



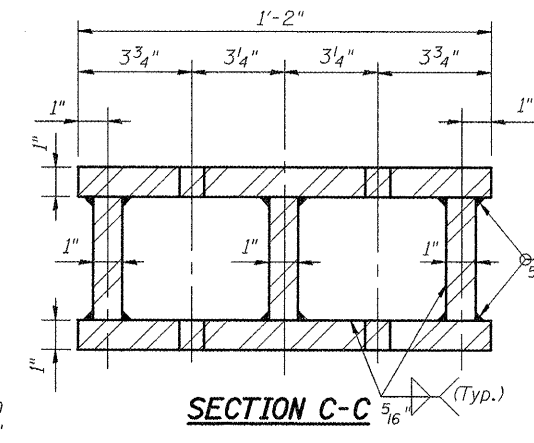
ELEVATION AT ABUT.



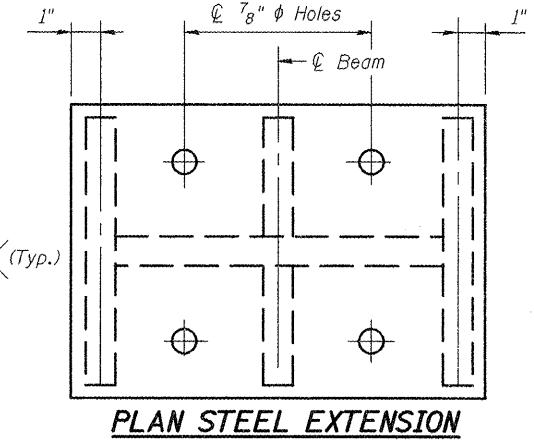
SECTION B-B



ELEVATION STEEL EXTENSION



SECTION C-C



PLAN STEEL EXTENSION

TYPE I ELASTOMERIC EXP. BRG.
(For Existing Beams)

Notes:
Anchor bolts shall be ASTM F1554 all-thread (or an Engineer-approved alternate material) of the grade(s) and diameter(s) specified. ASTM A307 Grade C anchor bolts may be used in lieu of ASTM F1554 Grade 36 (Fy=36ksi). The corresponding specified grade of AASHTO M314 anchor bolts may be used in lieu of ASTM F1554.
Anchor bolts for side retainers may be cast in place or installed in holes drilled before or after members are in place.
Drilled and set anchor bolts shall be installed according to Article 521.06 of the Standard Specifications.
Side retainers and other steel members required for the elastomeric bearing assembly shall be included in the cost of Elastomeric Bearing Assembly, Type I.
Weight of Steel Extensions included with Furnishing and Erecting Structural Steel.

JACK AND REMOVE EXISTING BEARING AT ABUTMENTS

- Jacking and bearing removal shall be done after the removal of the existing bridge deck is complete.
- Prior to commencing any work at the bearings, the Contractor shall submit plans for jacking for approval by the Engineer. This work shall be done after existing concrete deck is removed and prior to pouring of the new concrete deck. The maximum dead load reaction per beam (weight of steel only) at West & East Abutments is 3 kips. Minimum jack capacity is 6 kips for West & East Abutments.
- Jacking shall be limited so that the maximum lift transversely between adjacent beams is 1/8". See Special Provision for Jack and Remove Existing Bearings.
- The new bearings and steel extensions shall be in place and the jacks shall be lowered before the new concrete deck is poured.

BILL OF MATERIAL

Item	Unit	Total
Elastomeric Bearing Assembly Type I	Each	32
Anchor Bolts, 1"	Each	64
Jack and Remove Existing Bearings	Each	28



V3 Companies of Illinois Ltd.
7325 James Avenue
Woodridge, IL 60517
630.724.9200 phone
630.724.9202 fax
www.v3co.com

FILE NAME: 17 Expansion Bearings at Abutments.dgn	DESIGNED: B. Vegrzyn	REVISED: -
PLOT SCALE: 1:1	CHECKED: Coombe-Bloxdorf	REVISED: -
PLOT DATE: July 1, 2011	DRAWN: B. Vegrzyn	REVISED: -
	CHECKED: Coombe-Bloxdorf	REVISED: -

STATE OF ILLINOIS
DEPARTMENT OF TRANSPORTATION

EXPANSION BEARINGS AT ABUTMENTS
STRUCTURE NO. 072-0001 & 072-0002

SHEET NO. 17 OF 34 SHEETS

F.A.I. RTE.	SECTION	COUNTY	TOTAL SHEETS	SHEET NO.
74	72-6VB	PEORIA	133	60
			CONTRACT NO. 68874	
ILLINOIS FED. AID PROJECT				