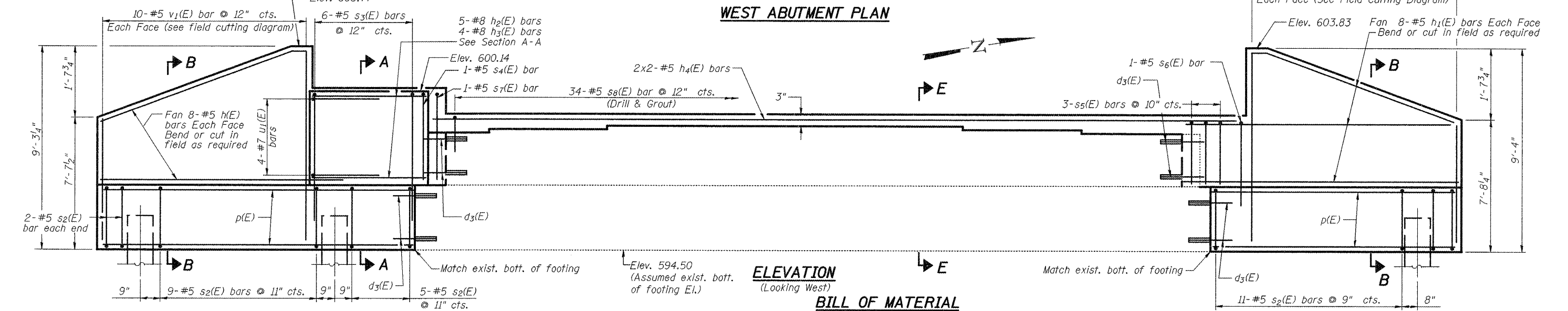


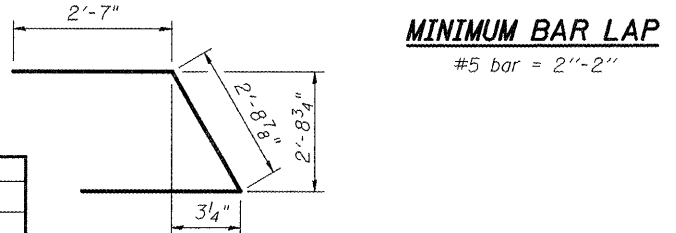
WEST ABUTMENT PLAN



ELEVATION
(Looking West)

BILL OF MATERIAL

Bar	No.	Size	Length	Shape
d3(E)	28	#8	2'-0"	—
h(E)	16	#5	10'-10"	—
h1(E)	16	#5	12'-4"	—
h2(E)	5	#8	5'-8"	—
h3(E)	4	#8	6'-8"	—
h4(E)	4	#5	20'-0"	—
p(E)	12	#8	25'-10"	—
s2(E)	29	#5	15'-7"	□
s3(E)	6	#5	13'-2"	□
s4(E)	1	#5	8'-8"	□
s5(E)	3	#5	4'-8"	□
s6(E)	1	#5	9'-4"	□
s7(E)	1	#5	6'-6"	□
s8(E)	34	#5	2'-8"	□
u1(E)	4	#7	7'-11"	▽
v1(E)	20	#5	15'-9"	—

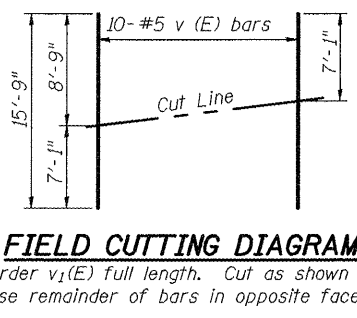
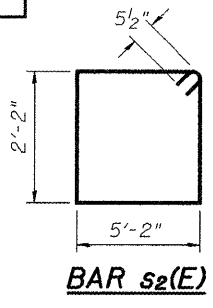
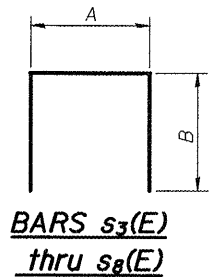


MINIMUM BAR LAP
#5 bar = 2'-2"

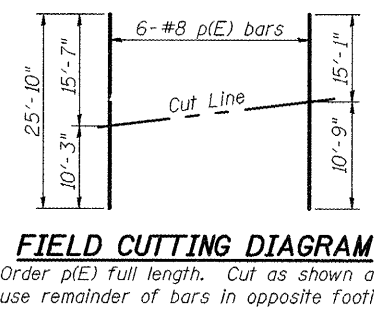
PILE DATA
Type: Metal Shell Piles - 14" φ x .25" walls
Nominal Required Bearing: 180 kips
Factored Resistance Available: 90 kips:
Est. Length: 25'-0"
No. Required: 5 Plus 1 Test Pile

Bar	A	B
s3(E)	2'-10"	5'-2"
s4(E)	2'-10"	2'-11"
s5(E)	8"	2'-0"
s6(E)	8"	4'-4"
s7(E)	8"	2'-11"
s8(E)	8"	1'-0"

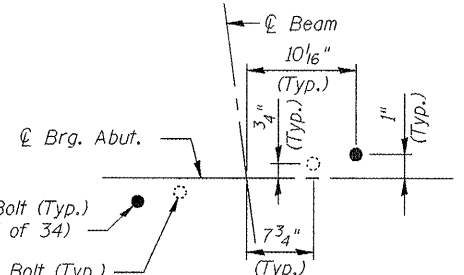
BAR u1(E)



FIELD CUTTING DIAGRAM
Order v1(E) full length. Cut as shown and use remainder of bars in opposite face.



FIELD CUTTING DIAGRAM
Order p(E) full length. Cut as shown and use remainder of bars in opposite footing.

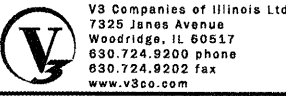


ANCHOR BOLTS LOCATION

Concrete Structures	Cu. Yd.	22.6
Reinforcement Bars, Epoxy Coated	Pound	2680
Structure Excavation	Cu. Yd.	136
Test Pile Metal Shells	Each	1
Furnishing Metal Shell Piles 14"x0.25"	Foot	125'-0"
Driving Piles	Foot	125'-0"
Porous Granular Embankment, Special	Cu. Yd.	124

NOTES

The cost of drilling and grouting d3(E) and s8(E) bars is included with Reinforcement Bars, Epoxy Coated. Installation as per Sec. 584 of the Standard Specifications. Min. depth of embedment will be 9 Inch.
See Sheet 24 of 34 for Sections A-A, B-B and E-E.
Bars indicated thus 2x2-#5 etc. indicates 2 lines of bars with 2 lengths per line.



FILE NAME: 21 West Abutment Widening EB.dgn
DESIGNED: B. Vegrzyn
CHECKED: Coombe-Bloxdorf
DRAWN: B. Vegrzyn
PLOT SCALE: 1:1
PLOT DATE: July 1, 2011

DESIGNED: B. Vegrzyn
CHECKED: Coombe-Bloxdorf
DRAWN: B. Vegrzyn
PLOT DATE: July 1, 2011

STATE OF ILLINOIS
DEPARTMENT OF TRANSPORTATION

WEST ABUTMENT WIDENING (EASTBOUND)
STRUCTURE NO. 072-0001 & 072-0002
SHEET NO. 21 OF 34 SHEETS

F.A.I. RTE.	SECTION	COUNTY	TOTAL SHEETS	SHEET NO.
74	72-6VB	PEORIA	133	64

CONTRACT NO. 68874
ILLINOIS FED. AID PROJECT