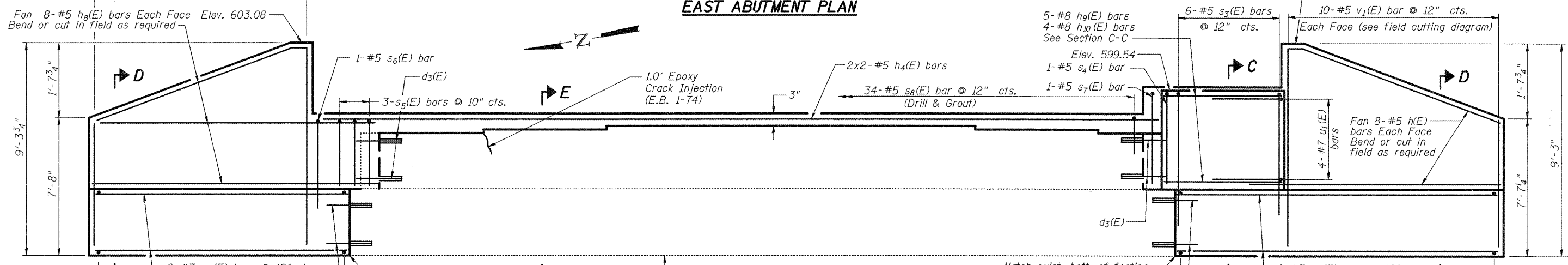


**EAST ABUTMENT PLAN**

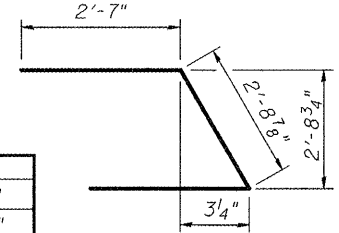


**ELEVATION**  
(Looking East)

**BILL OF MATERIAL**

Bar	No.	Size	Length	Shape
d3(E)	28	#8	2'-0"	—
h(E)	16	#5	10'-10"	—
h4(E)	4	#5	20'-0"	—
h8(E)	16	#5	12'-2"	—
h9(E)	5	#8	5'-10"	—
h10(E)	4	#8	6'-10"	—
s3(E)	6	#5	13'-2"	≡
s4(E)	1	#5	8'-8"	≡
s5(E)	3	#5	4'-8"	≡
s6(E)	1	#5	9'-4"	≡
s7(E)	1	#5	6'-6"	≡
s8(E)	34	#5	2'-8"	≡
t1(E)	27	#7	5'-2"	—
t2(E)	27	#8	5'-2"	—
u1(E)	4	#7	7'-11"	≡
v1(E)	20	#5	15'-9"	—
w1(E)	12	#7	25'-10"	—

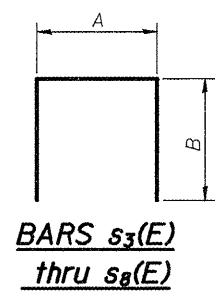
Material	Unit	Quantity
Epoxy Crack Injection	Foot	1
Concrete Structures	Cu. Yd.	22.6
Reinforcement Bars, Epoxy Coated	Pound	2670
Structure Excavation	Cu. Yd.	136
Porous Granular Embankment, Special	Cu. Yd.	124



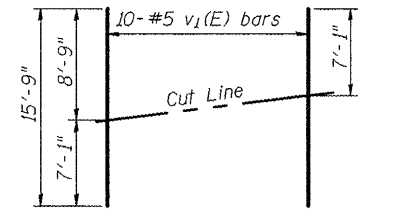
**MINIMUM BAR LAP**  
#5 bar = 2'-2"

**SOIL DATA**  
Allow. Brg. Pressure: 4500 psf  
Max. Soil Pressure: 3500 psf

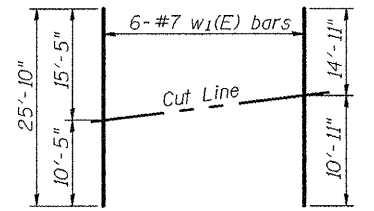
Bar	A	B
s3(E)	2'-10"	5'-2"
s4(E)	2'-10"	2'-11"
s5(E)	8"	2'-0"
s6(E)	8"	4'-4"
s7(E)	8"	2'-11"
s8(E)	8"	1'-0"



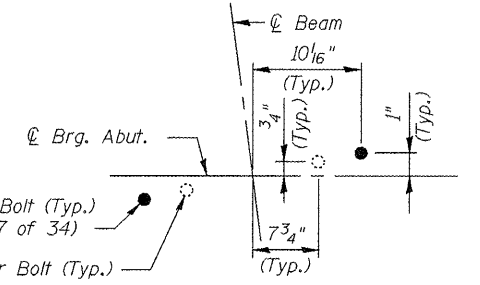
**BAR u1(E)**



**FIELD CUTTING DIAGRAM**  
Order v1(E) full length. Cut as shown and use remainder of bars in opposite face.



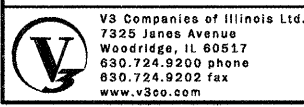
**FIELD CUTTING DIAGRAM**  
Order w1(E) full length. Cut as shown and use remainder of bars in opposite footing.



**ANCHOR BOLTS LOCATION**

**NOTES**

The cost of drilling and grouting d3(E) and s8(E) bars is included with Reinforcement Bars, Epoxy Coated. Installation as per Sec. 584 of the Standard Specifications. Min. depth of embedment will be 9 Inch.  
See Sheet 24 of 34 for Sections A-A, B-B and E-E.  
Bars indicated thus 2x2-#5 etc. indicates 2 lines of bars with 2 lengths per line.



FILE NAME: E23 East Abutment Widening EB.dgn  
PLOT SCALE: 1:1  
PLOT DATE: July 1, 2011

DESIGNED: B. Vegrzyn  
CHECKED: Coombe-Bloxdorf  
DRAWN: B. Vegrzyn  
CHECKED: Coombe-Bloxdorf

STATE OF ILLINOIS  
DEPARTMENT OF TRANSPORTATION

**EAST ABUTMENT WIDENING (EASTBOUND)**  
**STRUCTURE NO. 072-0001 & 072-0002**  
SHEET NO. 23 OF 34 SHEETS

F.A.I. RTE.	SECTION	COUNTY	TOTAL SHEETS	SHEET NO.
74	72-6VB	PEORIA	133	66

CONTRACT NO. 68874  
ILLINOIS FED. AID PROJECT