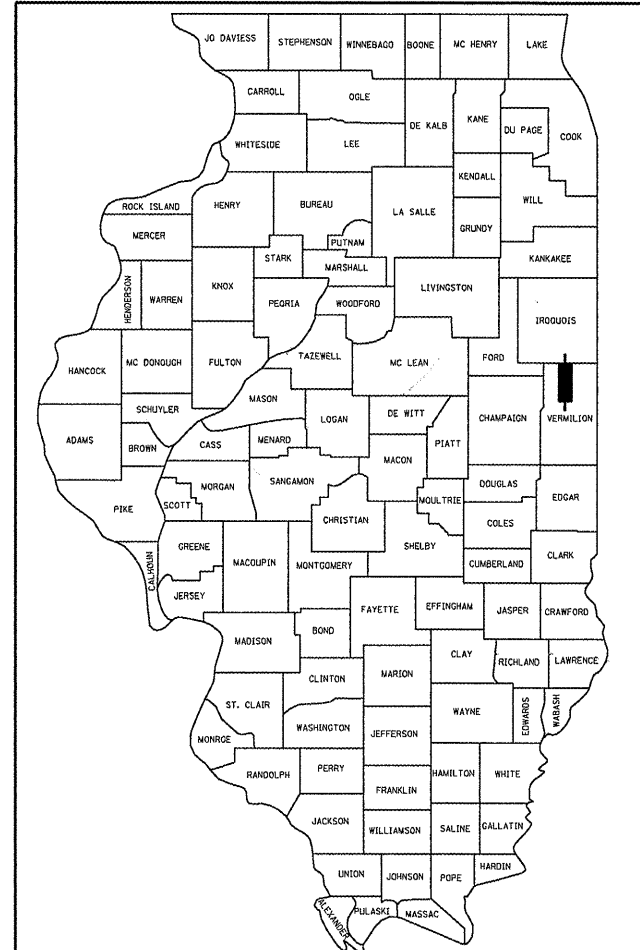


F.A.S. RTE.	SECTION	COUNTY	TOTAL SHEETS	SHEET NO.
331	(79-102)BR	VERMILION	29	1
		ILLINOIS	CONTRACT NO. 70434	

D-95-074-04



LOCATION OF SECTION INDICATED THUS: - [rectangle] -

STATE OF ILLINOIS
DEPARTMENT OF TRANSPORTATION
DIVISION OF HIGHWAYS
**PROPOSED
HIGHWAY PLANS**
FAS ROUTE 331 (C.H. 10)
SECTION (79-102)BR
PROJECT ACBRS-0331(119)
STRUCTURE REPLACEMENT
FOUNTAIN CREEK 0.3 MILES N OF EAST LYNN
VERMILION COUNTY
C-95-078-04

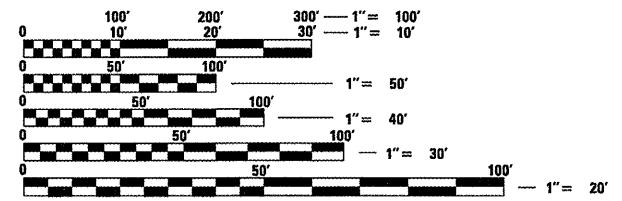
FOR INDEX OF SHEETS, SEE SHEET NO. 2
FOR SUMMARY OF QUANTITIES, SEE SHEET NO. 3

PROPOSED STRUCTURE NO. 092-2044
STA. 69+64.00
TRIPLE 13x13 BOX CULVERT.
SKEW 35° RT FWD

**REMOVAL OF EXISTING
STRUCTURE NO. 092-0176**
STA. 69+61.63 SINGLE SPAN
P.P.C. DECK BEAM STRUCTURE
SKEW 30° RT. FWD.

BEGIN IMPROVEMENT
STA. 68+88.00

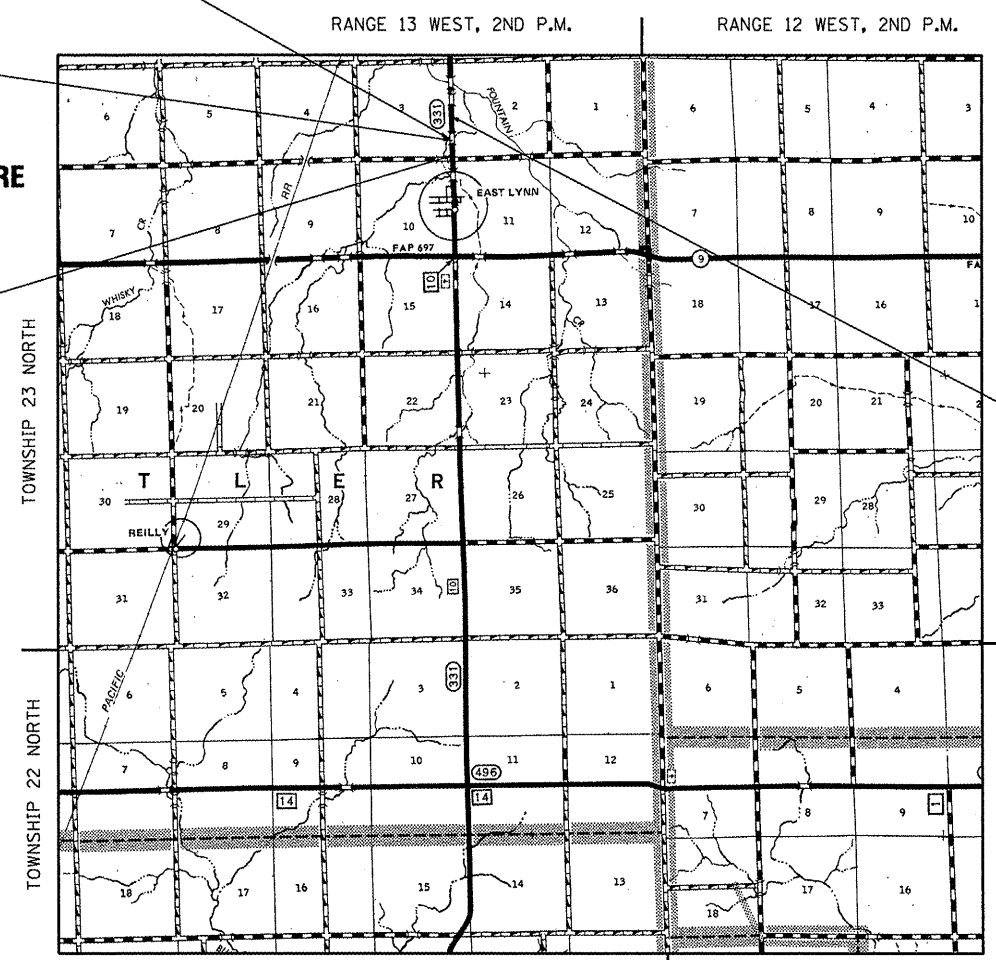
DESIGN DESIGNATION
HIGHWAY CLASSIFICATION
MAJOR COLLECTOR - RURAL
SPEED LIMIT: 55 MPH
ADT: 325 (2010) ; 350 (2020)
PV: 68%
SU: 14%
MU: 18%



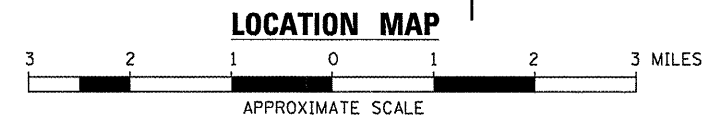
FULL SIZE PLANS HAVE BEEN PREPARED USING STANDARD ENGINEERING SCALES. REDUCED SIZED PLANS WILL NOT CONFORM TO STANDARD SCALES. IN MAKING MEASUREMENTS ON REDUCED PLANS, THE ABOVE SCALES MAY BE USED.

J.U.L.I.E.
JOINT UTILITY LOCATION INFORMATION FOR EXCAVATION
1-800-892-0123
OR 811 BUTLER TOWNSHIP

SURVEY BOOK NUMBER 4799
PROJECT ENGINEER: JASON STULTS
CONSULTANT LIAISON: RUSTIN KEYS
DISTRICT 5 NO. 217-465-4181
CONTRACT NO. 70434



END IMPROVEMENT
STA. 70+40.00



GROSS LENGTH = 152.00 FT. = 0.029 MILE
NET LENGTH = 152.00 FT. = 0.029 MILE

STATE OF ILLINOIS
DEPARTMENT OF TRANSPORTATION
DIVISION OF HIGHWAYS

SUBMITTED 8/23 20 11
Joseph E. Crowe
DEPUTY DIRECTOR OF HIGHWAYS, REGION ENGINEER
Oct 14 20 11
Scott E. Stitt, P.E.
ENGINEER OF DESIGN AND ENVIRONMENT
Oct 14 20 11
Christine M. Reed
DIRECTOR OF HIGHWAYS, CHIEF ENGINEER



Tom M. McDonough 8/12/2011
Signature Date

11/30/11
Expires

McDonough-Whitlow, P.C.
Consulting Engineers & Land Surveyors
138 East Wood Street
Hillsboro, IL 62049
Phone: 217.532.9233
Fax: 217.532.6300
PROFESSIONAL DESIGN No. 184-022754

**PRINTED BY THE AUTHORITY
OF THE STATE OF ILLINOIS**