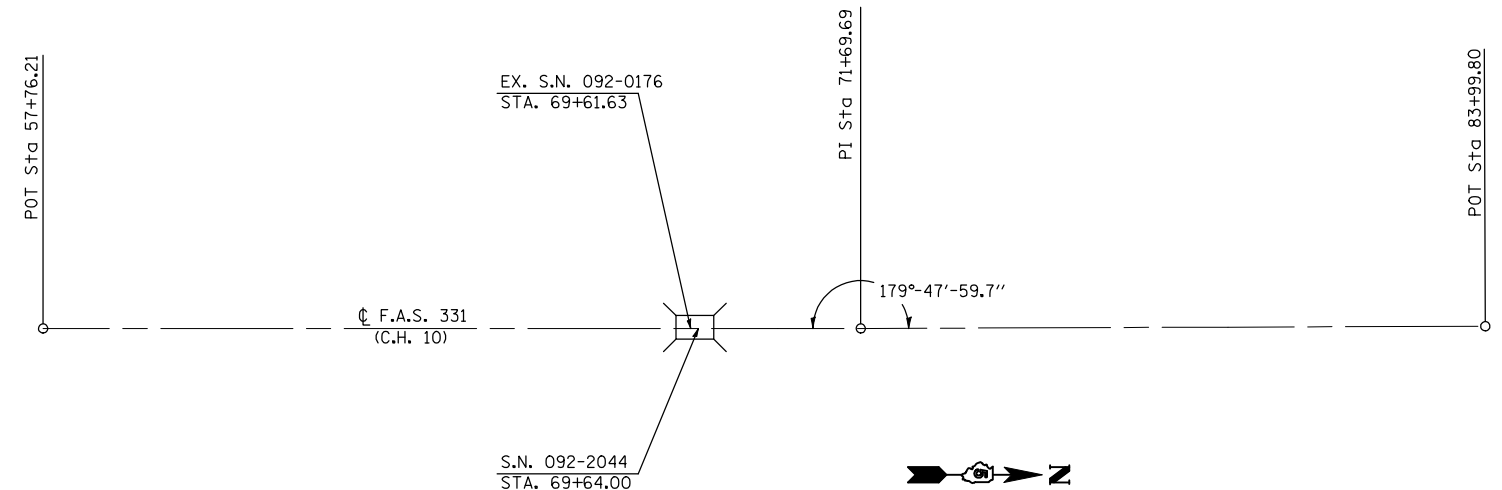


BENCHMARKS

BM #4799-1
CHISELED SQUARE LOCATED ON THE TOP OF THE EAST END OF THE NORTH HUBGUARD OF BRIDGE STRUCTURE
STA 57+87.7, 59.6' LT, EL. 687.251

BM #4799-2
CHISELED SQUARE LOCATED ON THE TOP OF THE SE ABUTMENT OF STR. 092-0176
STA 69+47.5, 18.1' RT, EL. 686.717

ALIGNMENT LAYOUT



POT STA 57+76.21	N 1,386,696.183
	E 1,132,508.433
POT STA 71+69.69	N 1,388,089.111
	E 1,132,469.272
POT STA 83+99.80	N 1,389,318.607
	E 1,132,430.408

FILE NAME = D570434-007-ATB.dgn	USER NAME = RNH	DESIGNED - JMH	REVISED -
		DRAWN - RNH	REVISED -
		CHECKED - TMM	REVISED -
		DATE -	REVISED -

**STATE OF ILLINOIS
DEPARTMENT OF TRANSPORTATION**

ALIGNMENT TIES AND BENCHMARKS

SCALE: NONE SHEET NO. 1 OF 1 SHEETS STA. _____ TO STA. _____

F.A.S. RTE.	SECTION	COUNTY	TOTAL SHEETS	SHEET NO.
331	(79-102)BR	VERMILION	29	7
			CONTRACT NO. 70434	
ILLINOIS FED. AID PROJECT				

McDonough-Whitlow, P.C.
Consulting Engineers & Land Surveyors
138 East Wood Street
Hillsboro, IL 62049
Phone: 217.532.9233
Fax: 217.532.6300
PROFESSIONAL DESIGN NO. 184-002754