

STATE OF ILLINOIS
DEPARTMENT OF TRANSPORTATION
DIVISION OF HIGHWAYS

**PROPOSED
HIGHWAY PLANS**

F.A.P. ROUTE 315 (U.S. 136)
SECTION 121BR-2
PROJECT ACBRF-0315(061)
BRIDGE REPLACEMENT
MCLEAN COUNTY

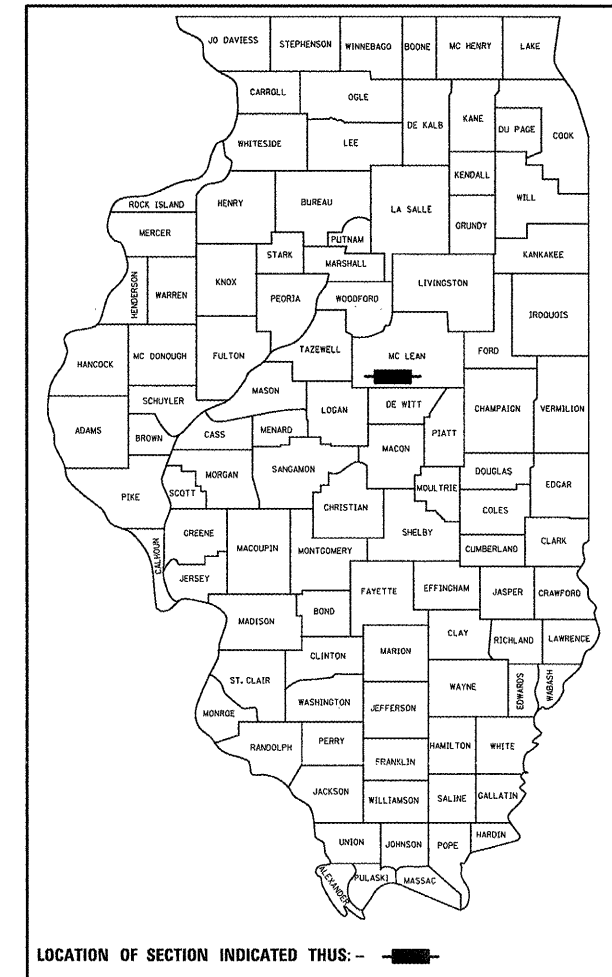
C-95-066-06

OVER KICKAPOO CREEK 1.3 MI. W. OF U.S. 51

| F.A.P. RTE. | SECTION | COUNTY | TOTAL SHEETS | SHEET NO. |
|-------------|---------|----------|--------------------|-----------|
| 315 | 121BR-2 | MCLEAN | 144 | 1 |
| | | ILLINOIS | CONTRACT NO. 70552 | |

* 144 + 1 = 145

D-95-066-06



FOR INDEX OF SHEETS, SEE SHEET NO. 2
FOR SUMMARY OF QUANTITIES SEE SHEET NO. 6 THROUGH 11

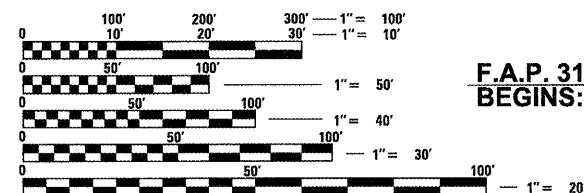
CURRENT TRAFFIC DATA

ADT = 3,100 (2009) 4,050 (2019)
20 YR ADT = 4,850
P.U. & P.C. % = 70.6
S.U. % = 10.4
M.U. % = 19.0

DESIGN DESIGNATION

N/A

EXISTING SN 057-0093 AT STA. 428+16.72
CARRYING U.S. 136 OVER KICKAPOO CREEK
TO BE REMOVED AND REPLACED.
PROPOSED SN 057-0244 AT STA. 428+16.72
3 SPAN PLATE GIRDER BRIDGE 310'-0" BK-BK.
SKEW 0°

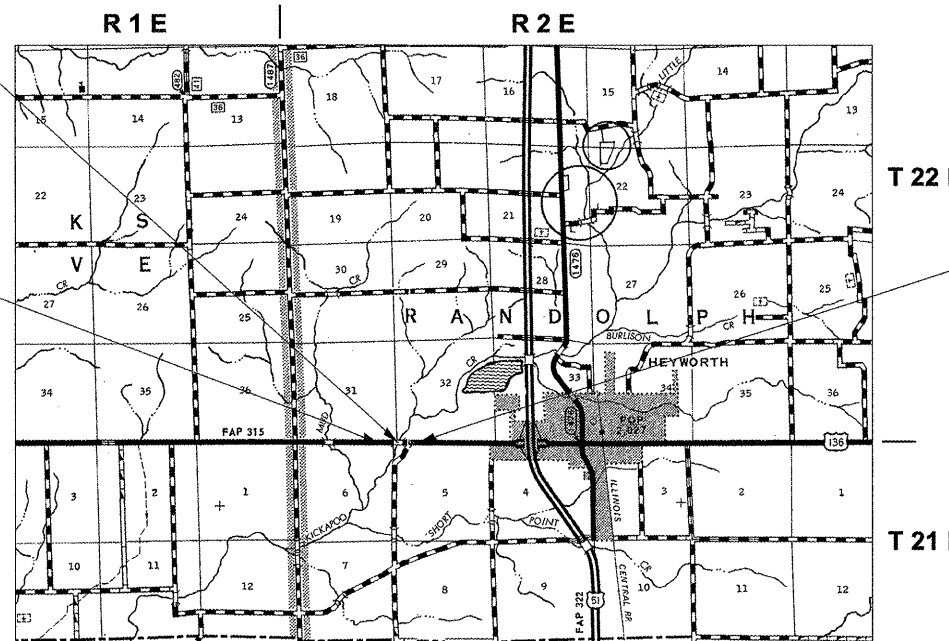


FULL SIZE PLANS HAVE BEEN PREPARED USING STANDARD
ENGINEERING SCALES. REDUCED SIZED PLANS WILL NOT
CONFORM TO STANDARD SCALES. IN MAKING MEASUREMENTS
ON REDUCED PLANS, THE ABOVE SCALES MAY BE USED.

J.U.L.I.E.
JOINT UTILITY LOCATION INFORMATION FOR EXCAVATION
1-800-892-0123
OR 811 (RANDOLPH TOWNSHIP)

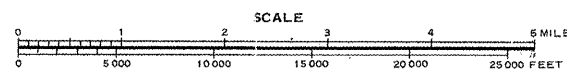
PROJECT ENGINEER: NANCY FASIG
SQUAD LEADER: BRIAN J. HOGAN
DESIGNER: BILLY J. MURPHY
(217)-465-4181

CONTRACT NO. 70552



F.A.P. 315 SECTION 121BR-2
BEGINS: STA. 415+00.00

F.A.P. 315 SECTION 121BR-2
ENDS: STA. 442+00.00



GROSS LENGTH = 2,700.00 FT. = 0.511 MILE
NET LENGTH = 2,700.00 FT. = 0.511 MILE

STATE OF ILLINOIS
DEPARTMENT OF TRANSPORTATION
DIVISION OF HIGHWAYS

SUBMITTED 8/15 20 11
Justin R. Cowen
DEPUTY DIRECTOR OF HIGHWAYS, REGION ENGINEER

Oct 14 20 11
Scott G. Stitt P.E.
acting ENGINEER OF DESIGN AND ENVIRONMENT

Oct 14 20 11
Christine M. Reed
DIRECTOR OF HIGHWAYS, CHIEF ENGINEER

PRINTED BY THE AUTHORITY
OF THE STATE OF ILLINOIS