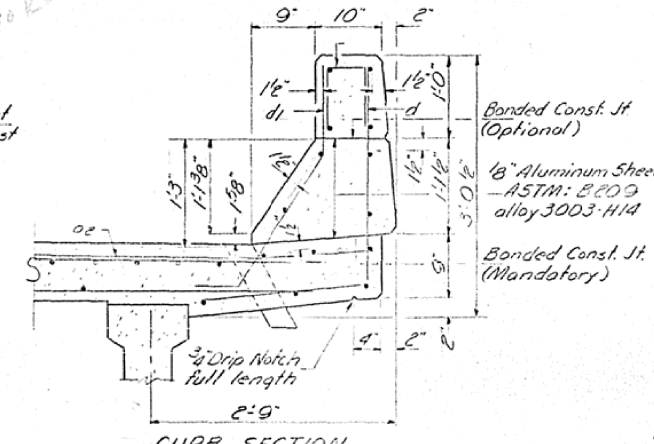
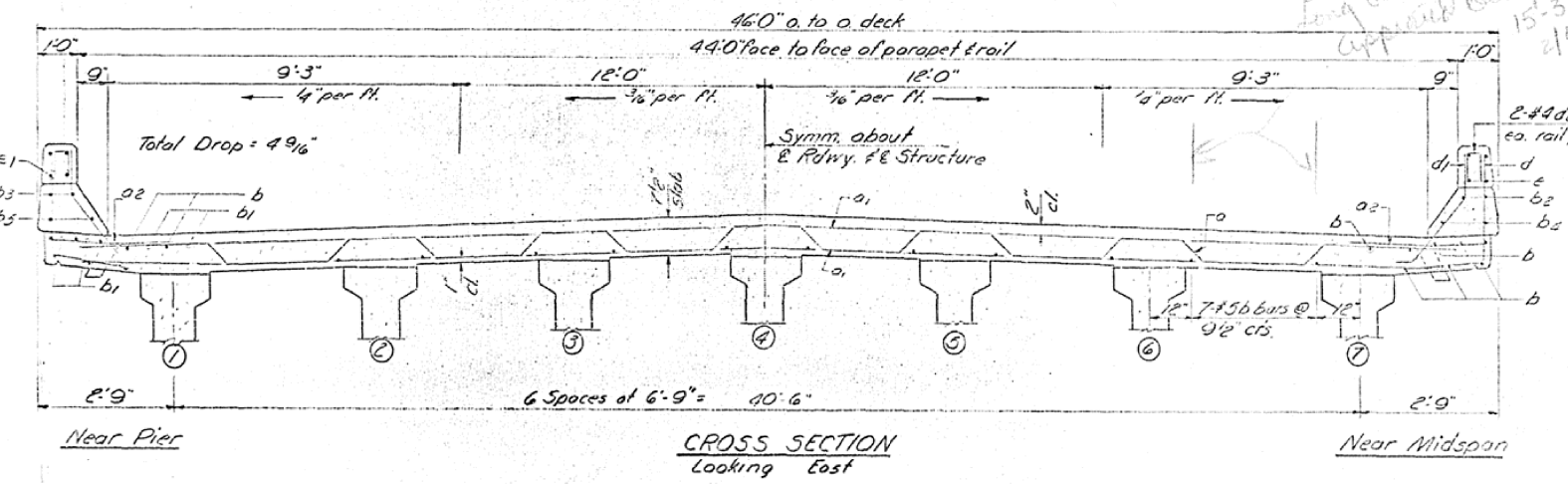
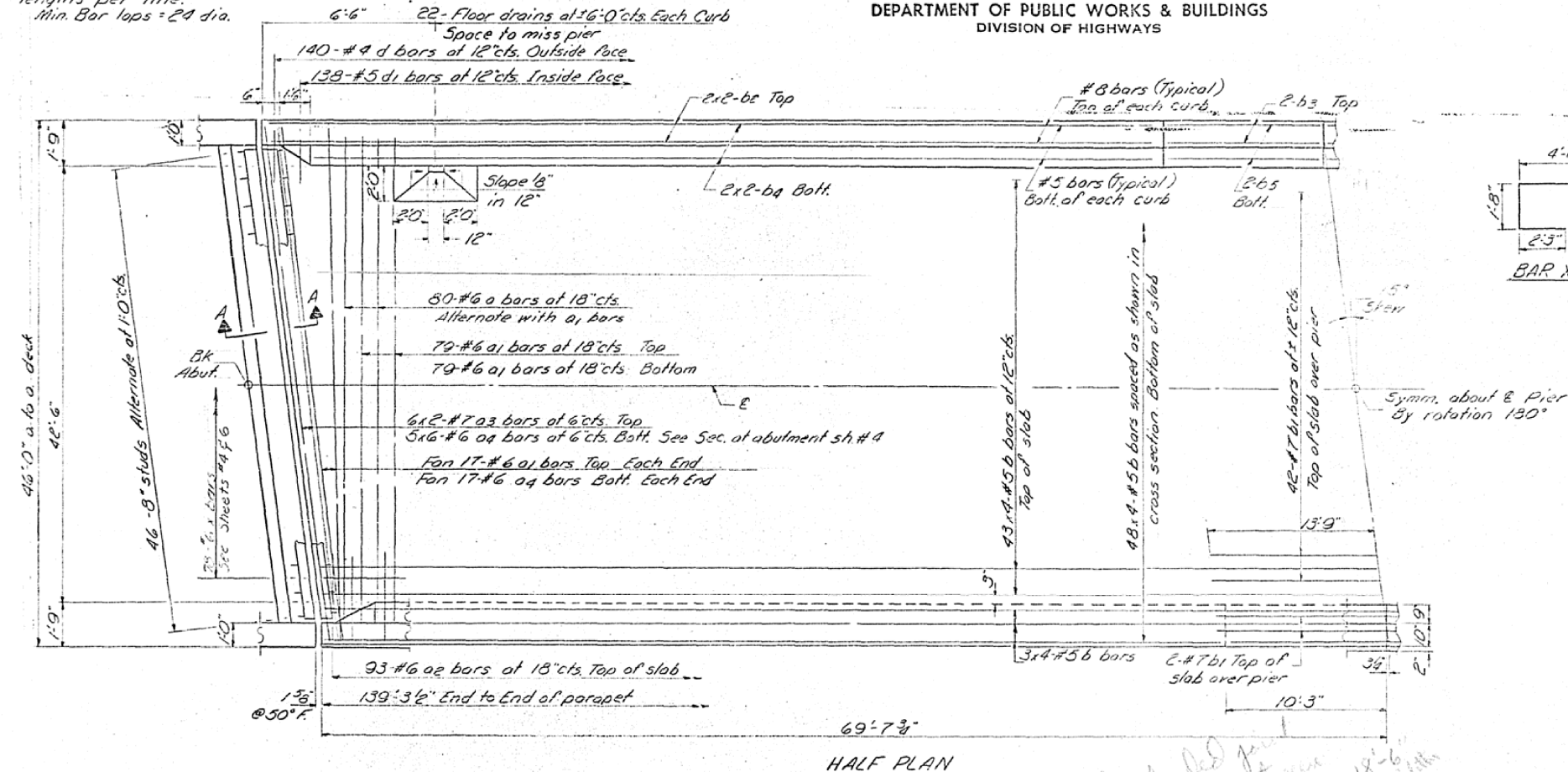


AS-BUILT PLANS FOR INFORMATION ONLY

STATE OF ILLINOIS
DEPARTMENT OF PUBLIC WORKS & BUILDINGS
DIVISION OF HIGHWAYS

ROUTE NO.	SECTION	COUNTY	TOTAL SHEETS	SHEET NO.	SHEET NO. 3
11	38BR	VERMILION	116	30	13 SHEETS
FED. ROAD DIST. NO. 7		ILLINOIS	FED. AID PROJECT		

Note:
Bars indicated thus 20 x 3 #5 etc.
indicates 20 lines of bars with 3
lengths per line.
Min. Bar laps = 24 dia.



BILL OF MATERIAL

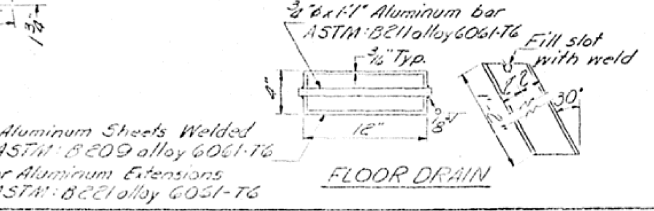
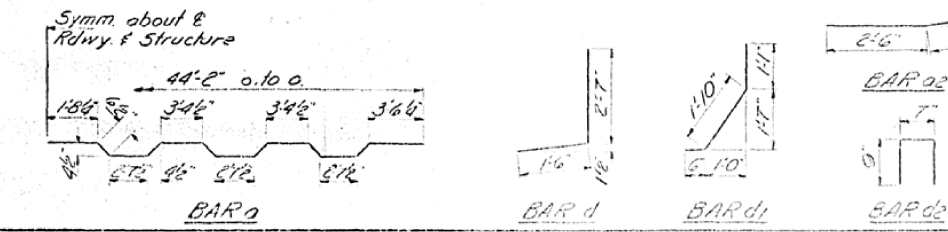
Bar	No.	Size	Length	Shape
a	80	#6	46'-2"	~
a1	226	#6	43'-6"	~
a2	186	#6	4'-0"	~
a3	24	#7	24'-7"	~
a4	60	#6	6'-1"	~
b	388	#5	35'-9"	~
b1	46	#1	27'-6"	~
b2	16	#8	30'-6"	~
b3	8	#8	10'-0"	~
b4	16	#5	30'-3"	~
b5	8	#5	10'-0"	~
d	280	#4	4'-1"	J
d1	276	#5	3'-5"	J
de	72	#4	2'-1"	Π
m	72	#4	5'-11"	~
m1	12	#6	4'-9"	~
me	48	#4	4'-11"	~
s	30	#4	11'-4"	~
s1	96	#4	8'-0"	~
x	156	#6	8'-5"	~

Reinforcement Bars Lbs 47480
Structural Steel Lbs 2730
Class X Concrete Cu Yds 210.8
Preformed Jt. Sealr Lin.ft 90

DESIGNED: A. J. Hayyat
CHECKED: J. P. Lindsey
DRAWN: S. C. Lindsey
CHECKED: J. P. Lindsey

EXAMINED: C. J. Thompson
PASSED: W. E. Bannerman
APPROVED: A. E. Staff

Dec. 12 1968



For bars m, m1, m2, s & s1 see sheets # 4 & 6.
The lengths and quantities of longitudinal reinforcement and Class X Concrete in parapets are not included in above quantities. See Sh # 7

SUPERSTRUCTURE
FA RT 11 SEC. 38BR
VERMILION COUNTY
STA 8 + 97.50