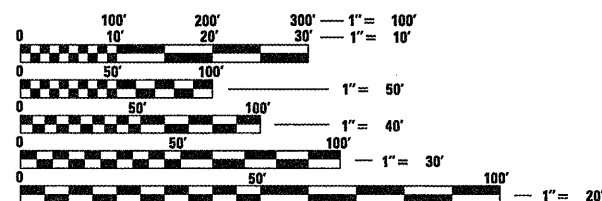


STATE OF ILLINOIS
DEPARTMENT OF TRANSPORTATION
DIVISION OF HIGHWAYS
**PROPOSED
HIGHWAY PLANS**

F.A.P. RTE.	SECTION	COUNTY	TOTAL SHEETS	SHEET NO.
323	150BR-1	EDGAR	48	1
FED. ROAD DIST. NO. 5	ILLINOIS	CONTRACT NO. 70609		

FOR INDEX OF SHEETS, SEE SHEET NO. 2
FOR SUMMARY OF QUANTITIES, SEE SHEET NO. 3



FULL SIZE PLANS HAVE BEEN PREPARED USING STANDARD ENGINEERING SCALES. REDUCED SIZED PLANS WILL NOT CONFORM TO STANDARD SCALES. IN MAKING MEASUREMENTS ON REDUCED PLANS, THE ABOVE SCALES MAY BE USED.

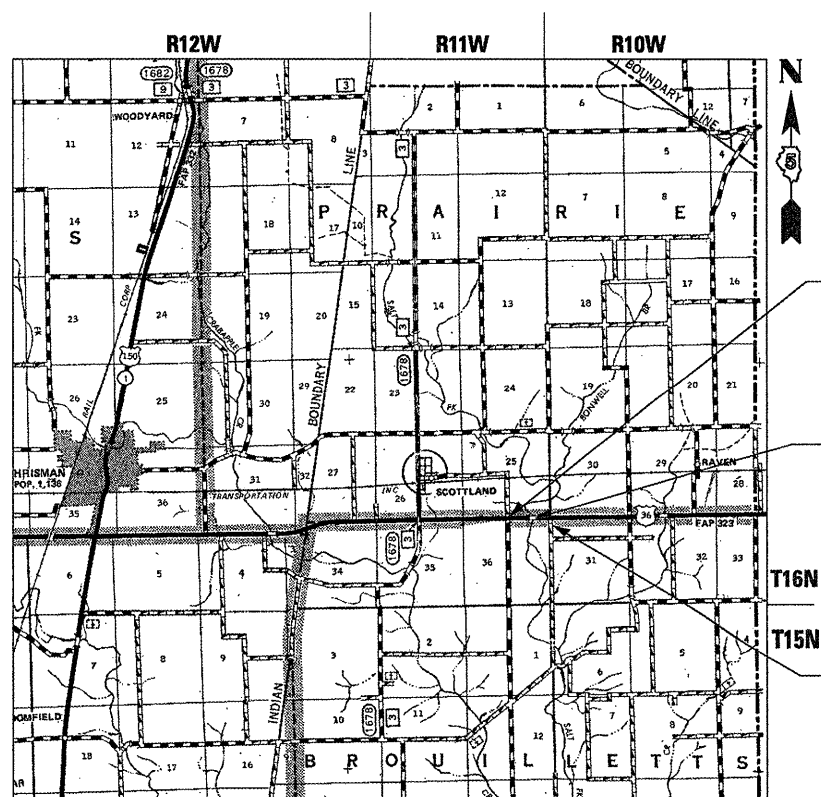
OTHER PRINCIPAL ARTERIAL
ADT = 950 (2010)
SU = 6.1%, MU = 16.6%
PC = 77.3%

J.U.I.E.
JOINT UTILITY LOCATION INFORMATION FOR EXCAVATION
1-800-892-0123 PRAIRIE, BROUILLETTS TWP. - EDGAR CO.
OR 811

PROJECT ENGINEER: JASON STULTS
CONSULTANT LIAISON: RUSTIN KEYS
DISTRICT 5 PHONE NUMBER: (217) 465-4181

CONTRACT NO. 70609

FAP ROUTE 323 (US 36)
SECTION 150BR-1
PROJECT ACNHF-0323(029)
BRIDGE REHABILITATION
EDGAR COUNTY
SALT FORK CREEK 3.0 MI. W. OF INDIANA STATE LINE
C-95-123-06



LOCATION MAP

5280' 0' 5280' 10560'

GROSS/NET LENGTH = 331.39 FT. = .063 MILE

PROPOSED IMPROVEMENT BEGINS
STA. 1944 + 11.11

PROPOSED SUPERSTRUCTURE REPLACEMENT
SN 023-0025
STATION 1945 + 28.00 (US 36)
3-SPANS @ 130'-1" B-B ABUTS.
33'-0" REINF. CONC. DECK
SKEW = 0 DEGREES

PROPOSED IMPROVEMENT ENDS
STA. 1947 + 42.50



LOCATION OF SECTION INDICATED THUS: - [black rectangle] -

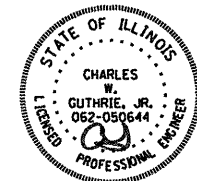
STATE OF ILLINOIS
DEPARTMENT OF TRANSPORTATION
DIVISION OF HIGHWAYS

SUBMITTED 8/9 20 11
Jessie A. Coe
DEPUTY DIRECTOR OF HIGHWAYS, REGION ENGINEER

Oct 14 20 11
Scott E. Stult, P.E.
ENGINEER OF DESIGN AND ENVIRONMENT

Oct 14 20 11
Christine M. Reed
DIRECTOR OF HIGHWAYS, CHIEF ENGINEER

BLANK, WESSELINK, COOK & ASSOCIATES
ENGINEERS - CONSULTANTS
DECATUR, ILLINOIS



Charles W. Guthrie, Jr.
CHARLES W. GUTHRIE, JR., P.E.

DATE July 7 20 11

EXPIRES NOVEMBER 30, 2011

**PRINTED BY THE AUTHORITY
OF THE STATE OF ILLINOIS**