

**GENERAL NOTES**

Reinforcement bars shall conform to the requirements of ASTM A706 Gr 60.

Reinforcement bars designated (E) shall be epoxy coated.

Plan dimensions and details relative to existing plans are subject to nominal construction variations. The Contractor shall field verify existing dimensions and details affecting new construction and make necessary approved adjustments prior to construction or ordering of materials and P.P.C. deck beams. Such variations shall not be cause for additional compensation for a change in scope of the work, however, the Contractor will be paid for the quantity actually furnished at the unit price bid for the work.

Layout of the slope protection system may be varied to suit ground conditions in the field as directed by the Engineer.

The Contractor is advised that the existing PPC deck beams are in a deteriorated condition with reduced load carrying capacity. It is the Contractor's responsibility to account for the condition of the beams when developing construction procedures for the removal and replacement of the superstructure.

If the Contractor's procedures for existing beam removal or placement of new beams involves placement of heavy equipment on the new or existing deck beams, a detailed procedure shall be submitted to the Engineer for approval. The procedure shall include calculations sealed by an Illinois Licensed Structural Engineer, verifying the structural adequacy of the beams for the proposed loads.

The cost of removing the existing HMA overlay, curbs, railing and water proofing membrane is included in Removal of Existing Superstructures.

A concrete sealer meeting the requirements of Section 587 of the Standard Specifications shall be applied to the exterior face and 9" on the underside of the fascia beams.

Current Ratings on File for Existing Structure: As of 8/26/2010

Inventory: HS: 15.8

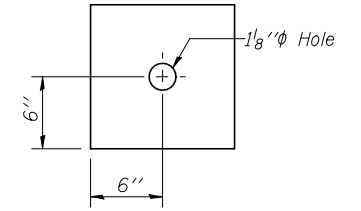
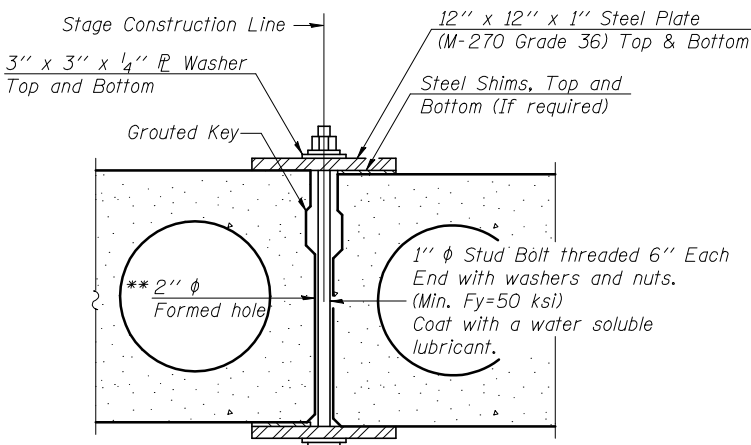
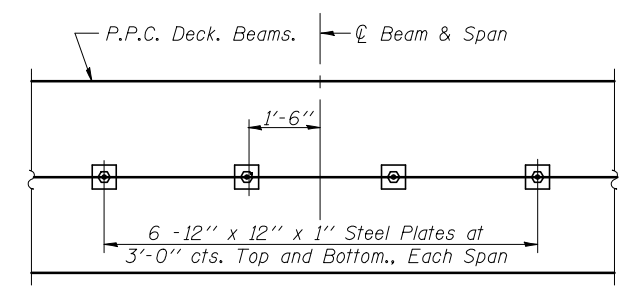
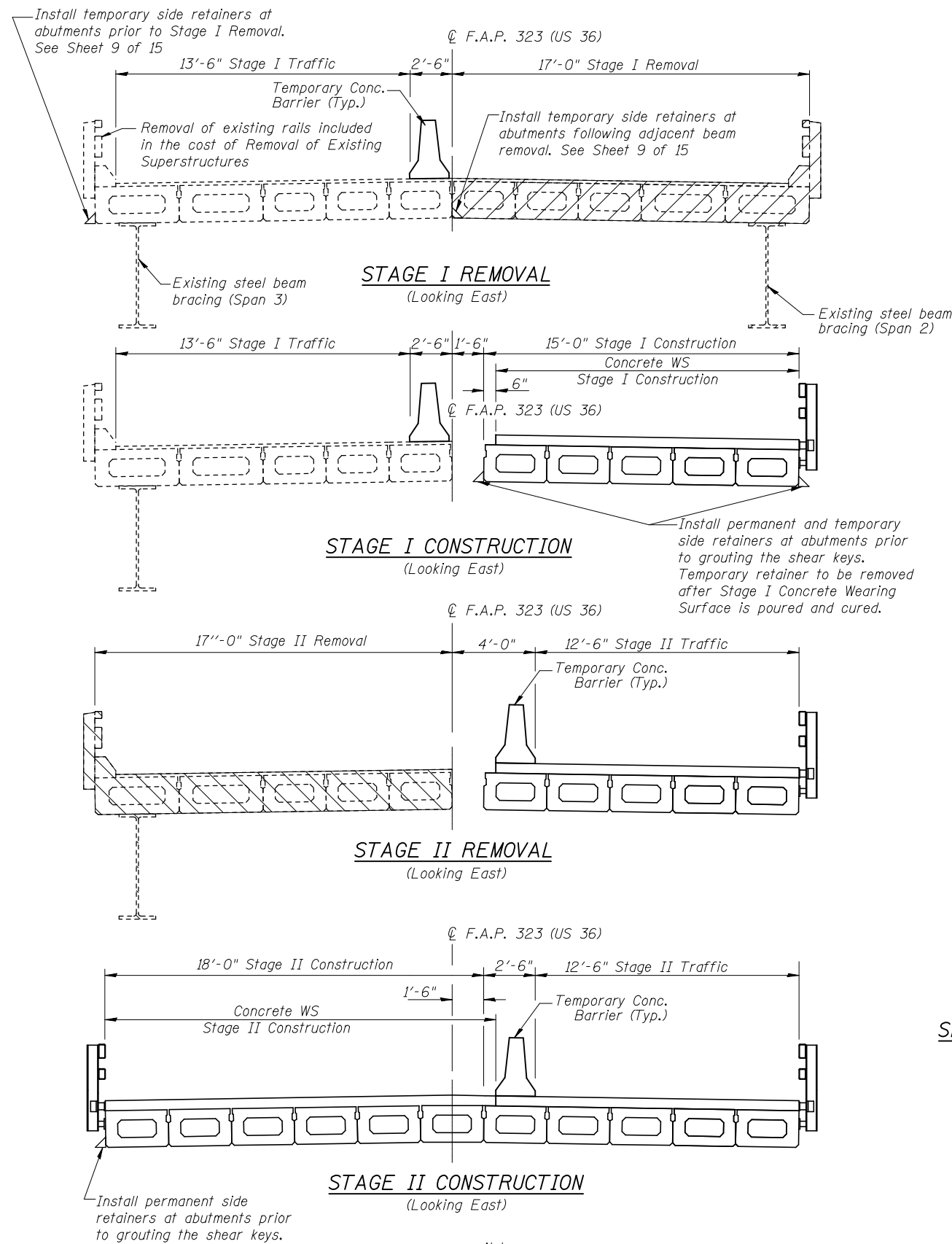
Operating: HS: 25.2

Live Load Restrictions: No

Inventory and Operating Ratings and Live Load Restrictions are provided for information only. Inventory and Operating Ratings are based on HS loading and information only. Inventory and Operating Ratings are based on HS loading and configuration. Live Load Restrictions are based on Illinois legal loads and configurations. The Ratings and Live Load Restrictions are not necessarily representative of capacities to support the Contractor's equipment.

**TOTAL BILL OF MATERIAL**

ITEM	UNIT	SUPER	SUB	TOTAL
Stone Riprap, Class A4	Sq. Yd.		431	431
Filter Fabric	Sq. Yd.		431	431
Removal of Existing Superstructures	Each	1		1
Concrete Removal	Cu. Yd.		3.3	3.3
Bridge Deck Grooving	Sq. Yd.	472		472
Protective Coat	Sq. Yd.	485		485
Concrete Wearing Surface, 5"	Sq. Yd.	465		465
Concrete Sealer	Sq. Ft.	634		634
Concrete Superstructure	Cu. Yd.	4.5		4.5
Precast Prestressed Concrete Deck Beams (21" Depth)	Sq. Ft.	4179		4179
Reinforcement Bars, Epoxy Coated	Pound	6560		6560
Bar Splicers	Each	136		136
Steel Railing, Type SM	Foot	254		254
Name Plates	Each	1		1
Preformed Joint Strip Seal	Foot	73.0		73.0
Diamond Grinding (Bridge Section)	Sq. Yd.	472		472
Structural Repair of Concrete (Depth Equal to or less than 5 inches)	Sq. Ft.		33	33
Structural Repair of Concrete (Depth Greater than 5 inches)	Sq. Ft.		4	4
Asbestos Bearing Pad Removal	Each		44	44
Anchor Bolts, 1"	Each		10	10

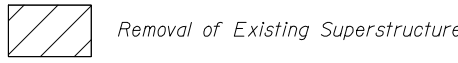


**SHEAR KEY CLAMPING DETAILS AT STAGE CONST. JT.**

Cost included with Precast Prestressed Concrete Deck Beams. See Stage Construction Details for traffic lanes.

\*\* Cast semicircular recesses in the sides of each beam adjacent to the stage construction line. These recesses should align to form a hole at the appropriate locations for the clamping device bolts.

**LEGEND**



Notes:  
 See roadway plans for quantity of Temporary Concrete Barrier.  
 Hatched area indicates Removal of Existing Superstructures.  
 The stage line at the abutments matches the Concrete Wearing Surface Stage line.

BLANK, WESSELINK, COOK & ASSOCIATES

ENGINEERS - CONSULTANTS DECATUR, ILLINOIS

DESIGN FIRM NO. 18400894

FILE NAME =	USER NAME =	DESIGNED <i>PBB</i>	REVISED -
	CHECKED <i>RJC/SAL</i>	REVISIONS	
PLOT SCALE =	DRAWN <i>MLO</i>	REVISIONS	
PLOT DATE =	CHECKED <i>PBB</i>	REVISIONS	

**STATE OF ILLINOIS DEPARTMENT OF TRANSPORTATION**

**GENERAL DATA STRUCTURE NO. 023-0025**

SHEET NO. 2 OF 15 SHEETS

F.A.P. RTE.	SECTION	COUNTY	TOTAL SHEETS	SHEET NO.
323	150BR-1	EDGAR	48	19
CONTRACT NO. 70609				
ILLINOIS FED. AID PROJECT				