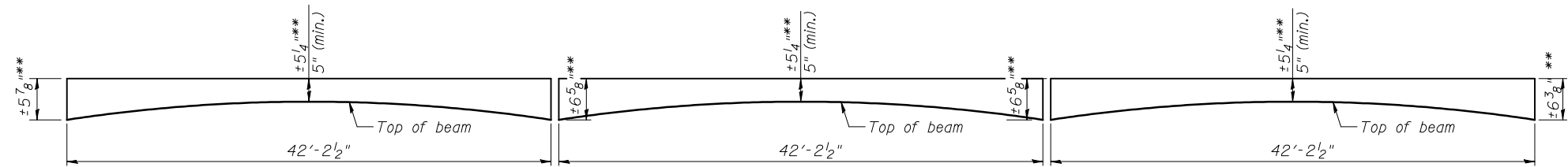
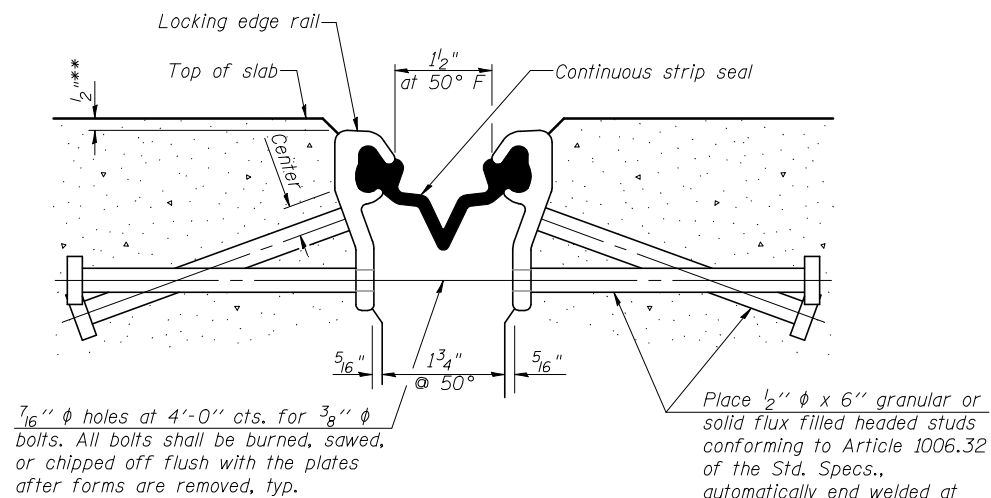


*Omit weld at seal opening.
**Prior to Grinding



ANTICIPATED CONCRETE WEARING SURFACE PROFILE
(For information only)

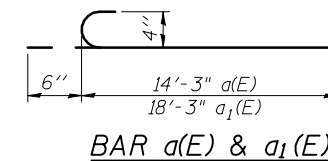
** Prior to Grinding



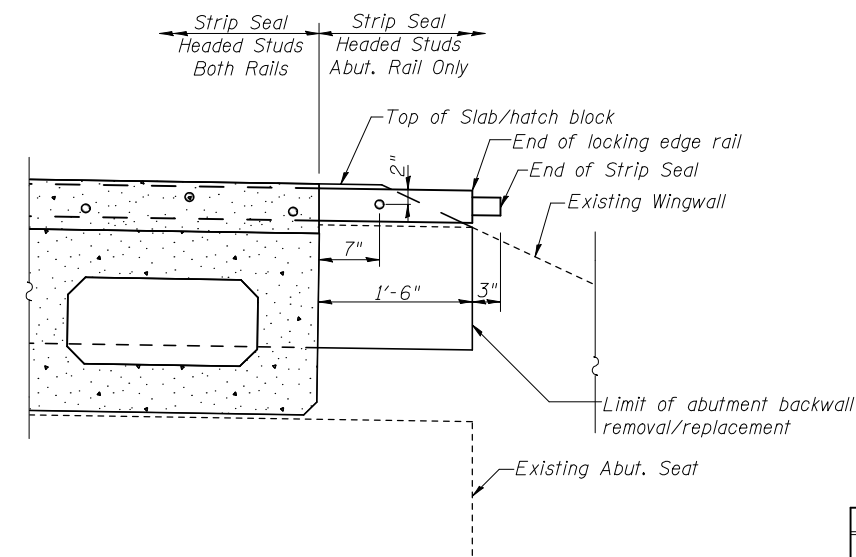
SECTION THRU STRIP SEAL JOINT FOR OVERLAY OVER DECK BEAMS

7/16" φ holes at 4'-0" cts. for 3/8" φ bolts. All bolts shall be burned, sawed, or chipped off flush with the plates after forms are removed, typ.

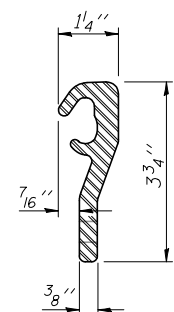
Place 1/2" φ x 6" granular or solid flux filled headed studs conforming to Article 1006.32 of the Std. Specs., automatically end welded at 1'-0" alt. cts.



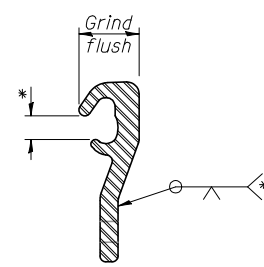
BAR a(E) & a1(E)



STRIP SEAL EXTENSIONS



LOCKING EDGE RAIL



LOCKING EDGE RAIL SPLICE

Notes:

The strip seal shall be made continuous and shall have a minimum thickness of 1/4". The configuration of the strip seal shall match the configuration of the Locking Edge Rails.

The height and thickness of the Locking Edge Rails shown are minimum dimensions. The actual configuration of the Locking Edge Rails and matching strip seal may vary from manufacturer to manufacturer. Flanged edge rails will not be allowed.

The inside of the Locking Edge Rail groove shall be free of weld residue.

Locking Edge Rails may be spliced at slope discontinuities and stage construction joints.

The manufacturer's recommended installation methods shall be followed.

SUPERSTRUCTURE BILL OF MATERIAL

Bar	No.	Size	Length	Shape
a(E)	128	#4	14'-9"	C
a1(E)	128	#4	18'-9"	C
b(E)	170	#4	27'-6"	—
Preformed Joint Strip Seal		Foot	73.0	
Reinforcement Bars, Epoxy Coated		Pound	5990	
Concrete Wearing Surface, 5"		Sq. Yd.	465	

Notes:

Formwork necessary for the wearing surface may be secured utilizing the bottom rail anchorage inserts and/or additional inserts cast into the beam.

BLANK, WESSELINK, COOK & ASSOCIATES

ENGINEERS - CONSULTANTS

DECATUR, ILLINOIS

DESIGN FIRM NO. 184000894

FILE NAME =	USER NAME =	DESIGNED <i>PBB</i>	REVISED -
		CHECKED <i>RJC/SAL</i>	REVISED -
		DRAWN <i>MLO</i>	REVISED -
		CHECKED <i>PBB</i>	REVISED -

**STATE OF ILLINOIS
DEPARTMENT OF TRANSPORTATION**

**SUPERSTRUCTURE & EXPANSION JOINT DETAILS
STRUCTURE NO. 023-0025**

SHEET NO. 5 OF 15 SHEETS

F.A.P. RTE.	SECTION	COUNTY	TOTAL SHEETS	SHEET NO.
323	150BR-1	EDGAR	48	22
				CONTRACT NO. 70609
ILLINOIS FED. AID PROJECT				