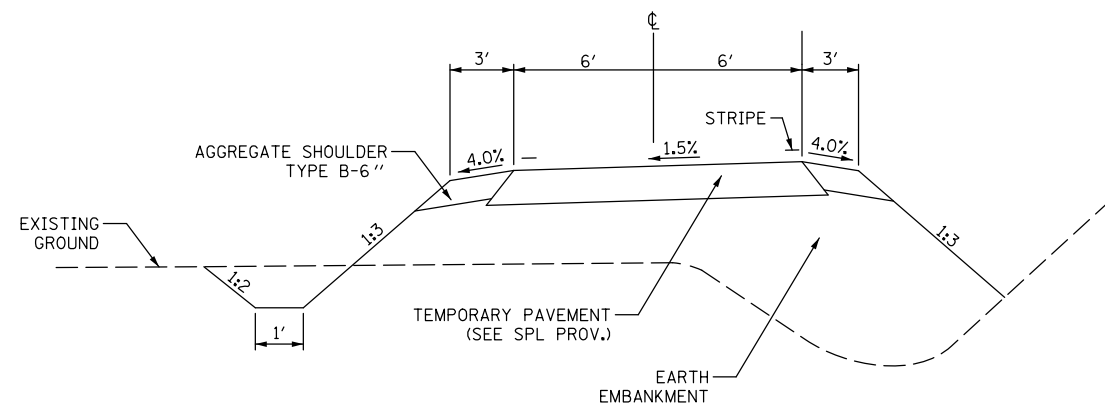


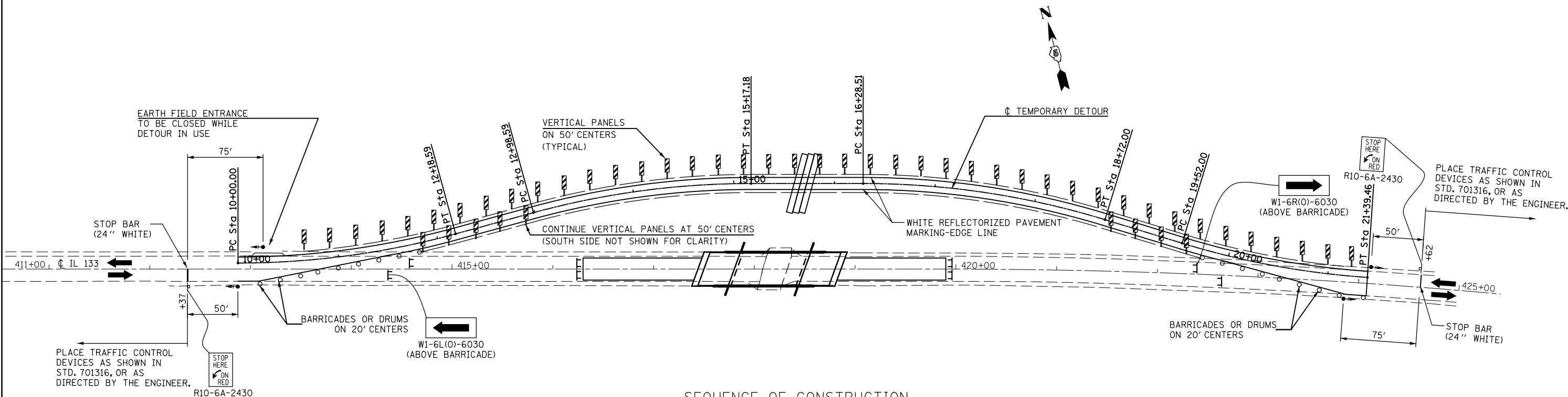
TYPICAL SECTION FOR RUNAROUND

STA. 10+00.00 TO STA. 11+50.00  
STA. 19+70.00 TO STA. 21+39.46



TYPICAL SECTION FOR RUNAROUND

STA. 11+50.00 TO STA. 19+70.00



SYMBOLS

- PROPOSED SIGNAL HEAD W/ BACK PLATE
- SIGN
- TYPE III BARRICADE
- BARRICADE OR DRUM WITH MONODIRECTIONAL STEADY BURNING LIGHT
- VERTICAL PANEL

SEQUENCE OF CONSTRUCTION

- ① CONSTRUCT TEMPORARY DETOUR AND SEED DETOUR EMBANKMENT WITH CLASS 7 SEEDING. INSTALL OTHER EROSION CONTROL MEASURES AS REQUIRED.
- ② INSTALL TRAFFIC SIGNALS, SIGNS, DETECTOR LOOPS, STRIPING VERTICAL PANELS, ETC. ACCORDING TO THESE DETAILS AND APPLICABLE PORTIONS OF STANDARDS 701316 & 701331.
- ③ DIVERT TRAFFIC TO DETOUR, CONSTRUCT NEW STRUCTURE AND APPROACH ROADWAY AND INSTALL GUARDRAIL AS SHOWN ELSEWHERE IN THESE PLANS.
- ④ PLACE TRAFFIC BACK ONTO IL 133, REMOVE DETOUR, AND RESTORE DISTURBED AREA BACK TO ORIGINAL CONDITIONS.

NOTES:  
RUNAROUND DESIGN SPEED 40MPH (POST RUNAROUND 35MPH ON ADVISORY SPEED SIGNS UNDER THE "ONE LANE ROAD AHEAD" SIGN ASSEMBLY).

VERTICAL PANELS TO BE INSTALLED TO PROVIDE A MINIMUM 18' CLEAR WIDTH. WIDTH RESTRICTION SIGNS WILL NOT BE REQUIRED. PLACE VERTICAL PANELS "BACK TO BACK" ON SIGN POSTS.

TRAFFIC CONTROL TO BE PAID FOR AT THE CONTRACT UNIT PRICE PER LUMP SUM FOR TRAFFIC CONTROL AND PROTECTION, 701316 (SPECIAL).

CONTRACTOR TO MAINTAIN ACCESS TO PROPERTIES DURING CONSTRUCTION, UNLESS OTHERWISE NOTED.

FILE NAME =	USER NAME = keysrb	DESIGNED -	REVISED -
ei:\pw\work\p\midot\keysrb\d0104347\d5706	8-sht-traffic_control.dgn	DRAWN -	REVISED -
	PLOT SCALE = 200.0000' / in.	CHECKED -	REVISED -
	PLOT DATE = 8/25/2011	DATE -	REVISED -

STATE OF ILLINOIS  
DEPARTMENT OF TRANSPORTATION

TRAFFIC CONTROL AND PROTECTION 701316 (SPECIAL)

SCALE: SHEET NO. 1 OF 1 SHEETS STA. TO STA.

F.A.P. RTE.	SECTION	COUNTY	TOTAL SHEETS	SHEET NO.
749	14BR, 14CR, 123CR	EDGAR	115	40
CONTRACT NO. 70618				
ILLINOIS FED. AID PROJECT				