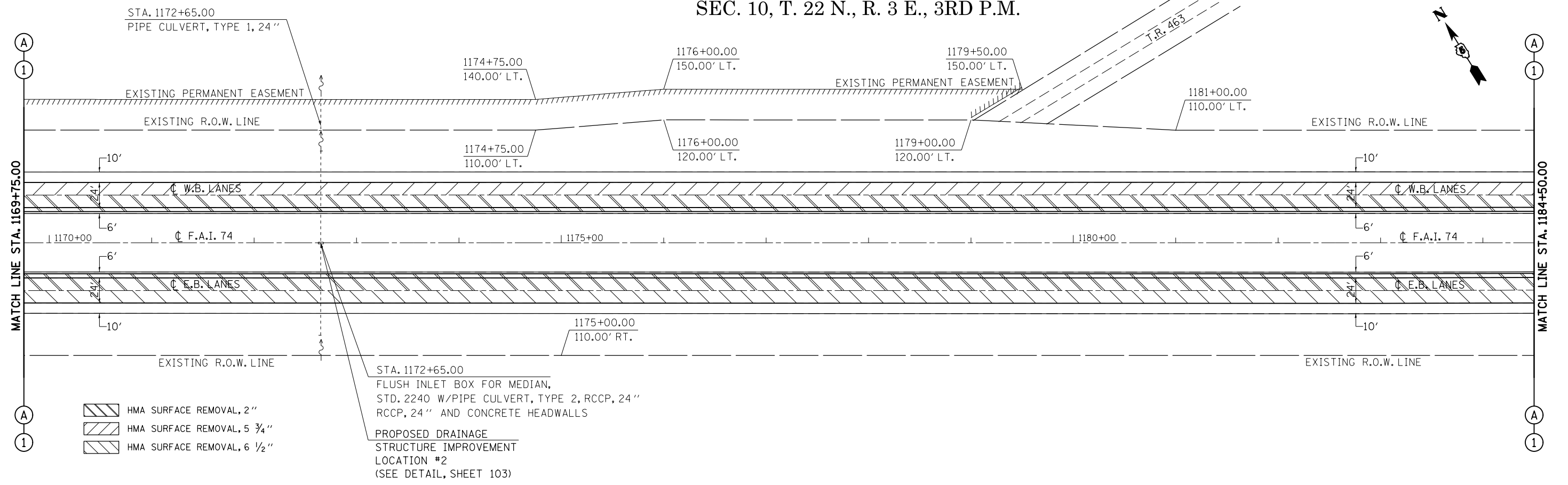


SEC. 10, T. 22 N., R. 3 E., 3RD P.M.

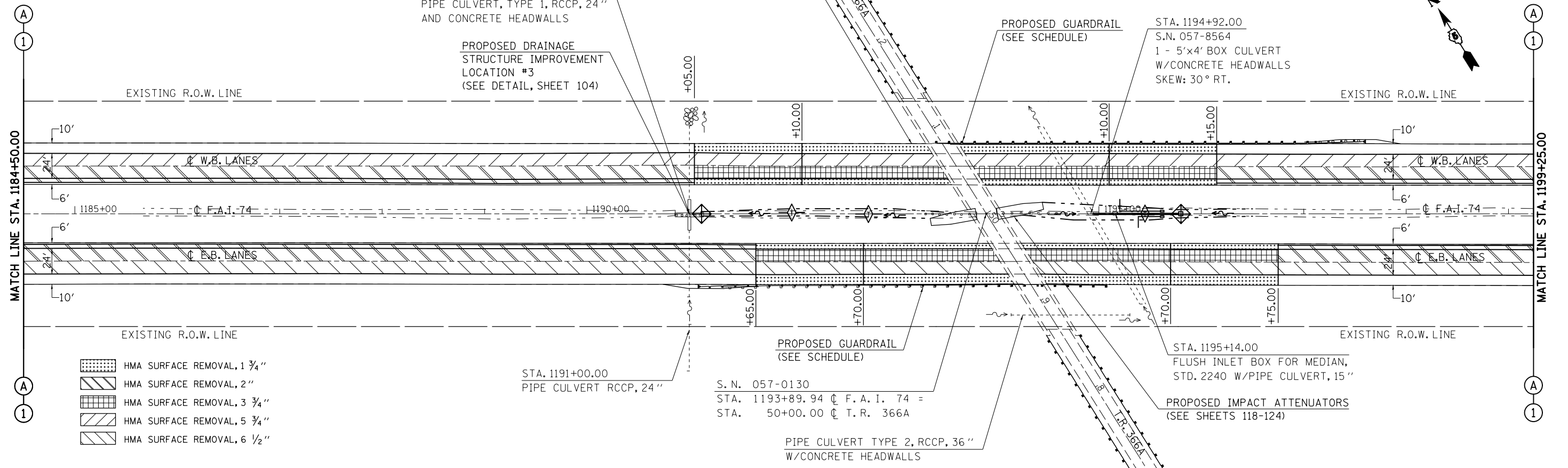


SEC. 10, T. 22 N., R. 3 E., 3RD P.M.

STA. 1191+00.00  
INLET BOX, STD. 2245 W/  
PIPE CULVERT, TYPE 1, RCCP, 24"  
AND CONCRETE HEADWALLS

SEE TRANSITION DETAILS  
FOR OVERHEAD STRUCTURE

SEC. 11, T. 22 N., R. 3 E., 3RD P.M.



PROPOSED DRAINAGE  
STRUCTURE IMPROVEMENT  
LOCATION #3  
(SEE DETAIL, SHEET 104)

PROPOSED GUARDRAIL  
(SEE SCHEDULE)

STA. 1194+92.00  
S.N. 057-8564  
1 - 5'x4' BOX CULVERT  
W/CONCRETE HEADWALLS  
SKEW: 30° RT.

- HMA SURFACE REMOVAL, 1 3/4"
- HMA SURFACE REMOVAL, 2"
- HMA SURFACE REMOVAL, 3 3/4"
- HMA SURFACE REMOVAL, 5 3/4"
- HMA SURFACE REMOVAL, 6 1/2"

STA. 1191+00.00  
PIPE CULVERT RCCP, 24"

S. N. 057-0130  
STA. 1193+89.94  $\phi$  F. A. I. 74 =  
STA. 50+00.00  $\phi$  T. R. 366A

PIPE CULVERT TYPE 2, RCCP, 36"  
W/CONCRETE HEADWALLS

STA. 1195+14.00  
FLUSH INLET BOX FOR MEDIAN,  
STD. 2240 W/PIPE CULVERT, 15"

PROPOSED IMPACT ATTENUATORS  
(SEE SHEETS 118-124)

FILE NAME =	USER NAME = ppersonbr	DESIGNED - GAE	REVISED -	<b>STATE OF ILLINOIS DEPARTMENT OF TRANSPORTATION</b>	<b>F.A.I. 74 (I-74) PLAN SHEETS</b>	F.A.I. RTE. =	SECTION =	COUNTY =	TOTAL SHEETS =	SHEET NO. =
et:\pwork\pwork\personbr\d0184863\0570648-sh1-plan.dgn		DRAWN - BBP	REVISED -			74	(57-23,57-24)RS-1	MCLEAN	175	42
PLOT SCALE = 100.0000' / 1" =		CHECKED -	REVISED -			CONTRACT NO. 70648				
PLOT DATE = 8/25/2011		DATE - 08/26/10	REVISED -			SCALE: 1" = 50'			SHEET NO. 4 OF 15 SHEETS	