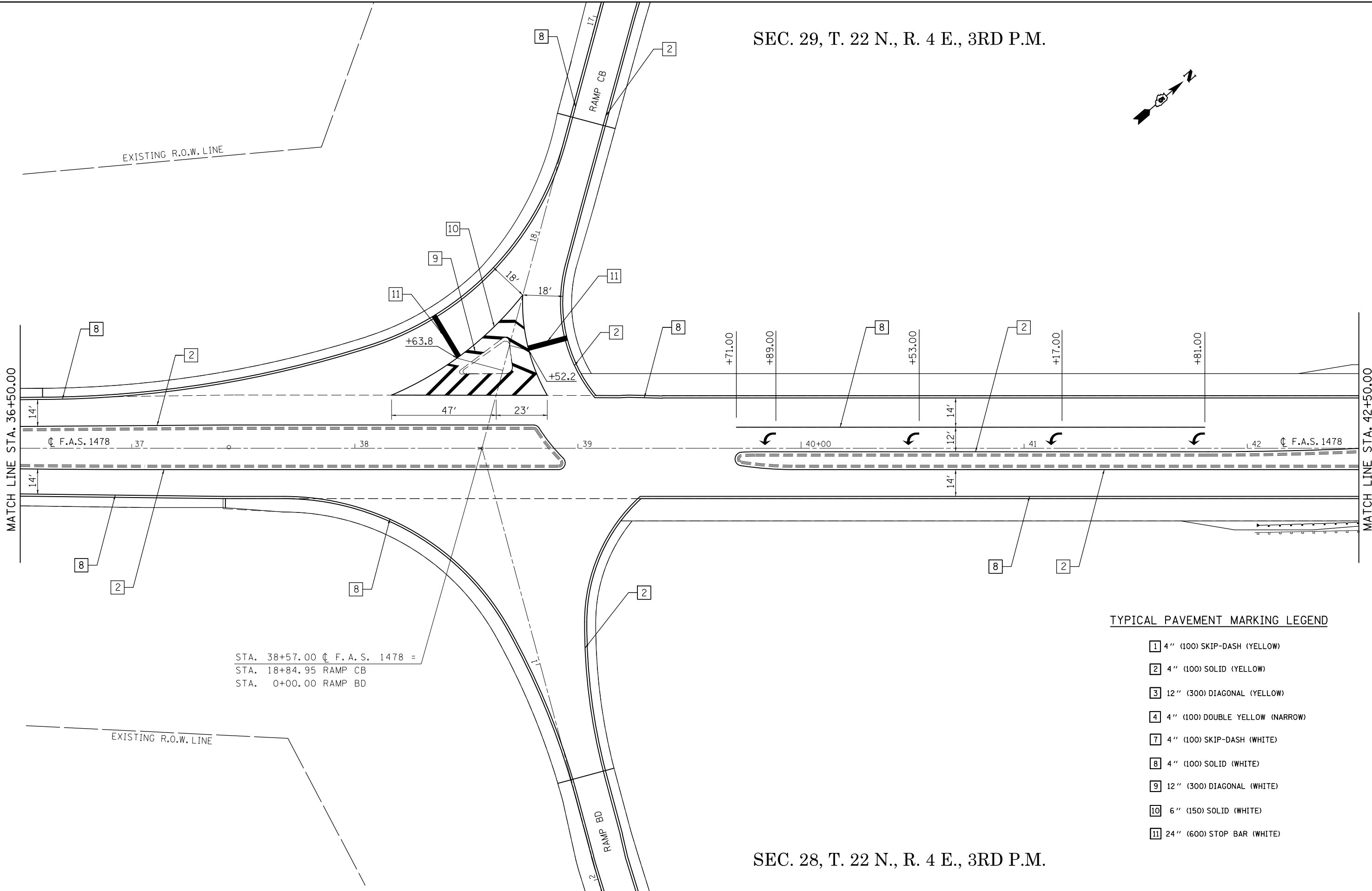
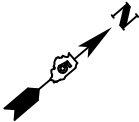


SEC. 29, T. 22 N., R. 4 E., 3RD P.M.



STA. 38+57.00 ϕ F. A. S. 1478 =
 STA. 18+84.95 RAMP CB
 STA. 0+00.00 RAMP BD

TYPICAL PAVEMENT MARKING LEGEND

- 1 4" (100) SKIP-DASH (YELLOW)
- 2 4" (100) SOLID (YELLOW)
- 3 12" (300) DIAGONAL (YELLOW)
- 4 4" (100) DOUBLE YELLOW (NARROW)
- 7 4" (100) SKIP-DASH (WHITE)
- 8 4" (100) SOLID (WHITE)
- 9 12" (300) DIAGONAL (WHITE)
- 10 6" (150) SOLID (WHITE)
- 11 24" (600) STOP BAR (WHITE)

SEC. 28, T. 22 N., R. 4 E., 3RD P.M.

FILE NAME = c:\pwork\pwork\personbr\0184851\0570648-shit-pmk_FAS1478.dgn	USER NAME = personbr	DESIGNED - GAE	REVISED -
	PLOT SCALE = 40.0000' / in.	DRAWN - BBP	REVISED -
	PLOT DATE = 8/25/2011	CHECKED -	REVISED -
		DATE - 07/18/11	REVISED -

**STATE OF ILLINOIS
 DEPARTMENT OF TRANSPORTATION**

PAVEMENT MARKING PLAN SHEET		
F.A.S. 1478		
SCALE: 1" = 20'	SHEET NO. 2 OF 6 SHEETS	STA. 36+50.00 TO STA. 42+50.00

F.A.I. RTE.	SECTION	COUNTY	TOTAL SHEETS	SHEET NO.
74	(57-23,57-24)RS-1	MCLEAN	175	63
CONTRACT NO. 70648				
ILLINOIS FED. AID PROJECT				