

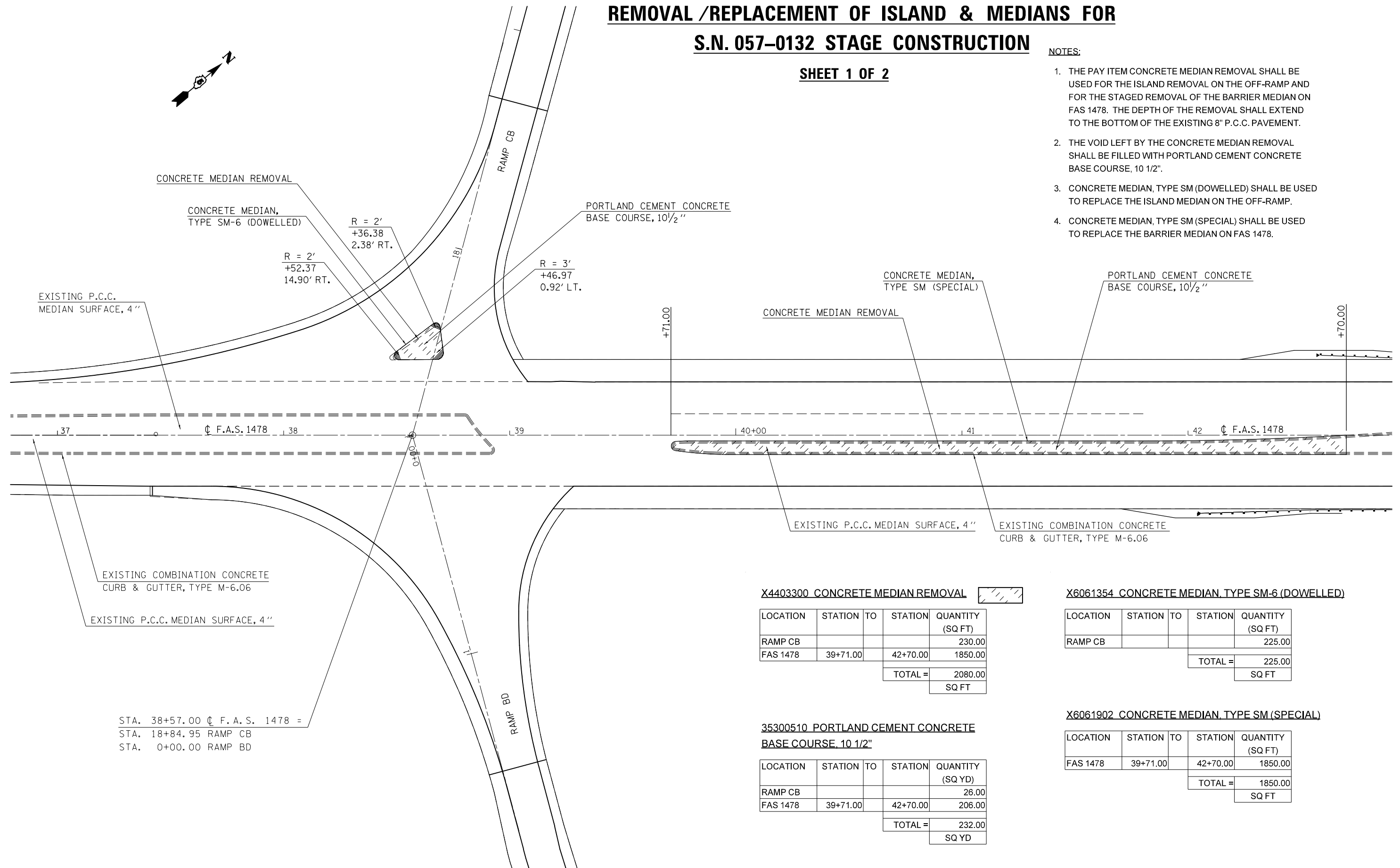
# REMOVAL /REPLACEMENT OF ISLAND & MEDIANS FOR

## S.N. 057-0132 STAGE CONSTRUCTION

SHEET 1 OF 2

NOTES:

1. THE PAY ITEM CONCRETE MEDIAN REMOVAL SHALL BE USED FOR THE ISLAND REMOVAL ON THE OFF-RAMP AND FOR THE STAGED REMOVAL OF THE BARRIER MEDIAN ON FAS 1478. THE DEPTH OF THE REMOVAL SHALL EXTEND TO THE BOTTOM OF THE EXISTING 8" P.C.C. PAVEMENT.
2. THE VOID LEFT BY THE CONCRETE MEDIAN REMOVAL SHALL BE FILLED WITH PORTLAND CEMENT CONCRETE BASE COURSE, 10 1/2".
3. CONCRETE MEDIAN, TYPE SM (DOWELLED) SHALL BE USED TO REPLACE THE ISLAND MEDIAN ON THE OFF-RAMP.
4. CONCRETE MEDIAN, TYPE SM (SPECIAL) SHALL BE USED TO REPLACE THE BARRIER MEDIAN ON FAS 1478.



EXISTING COMBINATION CONCRETE CURB & GUTTER, TYPE M-6.06

EXISTING P.C.C. MEDIAN SURFACE, 4"

STA. 38+57.00  $\phi$  F.A.S. 1478 =  
 STA. 18+84.95 RAMP CB  
 STA. 0+00.00 RAMP BD

**X4403300 CONCRETE MEDIAN REMOVAL**

LOCATION	STATION	TO	STATION	QUANTITY (SQ FT)
RAMP CB				230.00
FAS 1478	39+71.00		42+70.00	1850.00
TOTAL =				2080.00
				SQ FT

**X6061354 CONCRETE MEDIAN, TYPE SM-6 (DOWELLED)**

LOCATION	STATION	TO	STATION	QUANTITY (SQ FT)
RAMP CB				225.00
TOTAL =				225.00
				SQ FT

**35300510 PORTLAND CEMENT CONCRETE BASE COURSE, 10 1/2"**

LOCATION	STATION	TO	STATION	QUANTITY (SQ YD)
RAMP CB				26.00
FAS 1478	39+71.00		42+70.00	206.00
TOTAL =				232.00
				SQ YD

**X6061902 CONCRETE MEDIAN, TYPE SM (SPECIAL)**

LOCATION	STATION	TO	STATION	QUANTITY (SQ FT)
FAS 1478	39+71.00		42+70.00	1850.00
TOTAL =				1850.00
				SQ FT

FILE NAME =	USER NAME = ppersonbr	DESIGNED -	REVISED -
et:\pw_work\p\dot\personbr\d0184863\0570648-sh-t-staging_FAS1478.dgn		DRAWN -	REVISED -
PLOT SCALE = 40.0000' / in.		CHECKED -	REVISED -
PLOT DATE = 8/26/2011		DATE -	REVISED -

STATE OF ILLINOIS  
 DEPARTMENT OF TRANSPORTATION

REMOVAL /REPLACEMENT OF ISLANDS & MEDIANS FOR  
 S.N. 057-0132 STAGE CONSTRUCTION

SCALE: 1" = 20' SHEET NO. 1 OF 2 SHEETS STA. TO STA.

F.A.I. RTE.	SECTION	COUNTY	TOTAL SHEETS	SHEET NO.
74	(57-23,57-24)RS-1	MCLEAN	175	73
CONTRACT NO. 70648				
ILLINOIS FED. AID PROJECT				