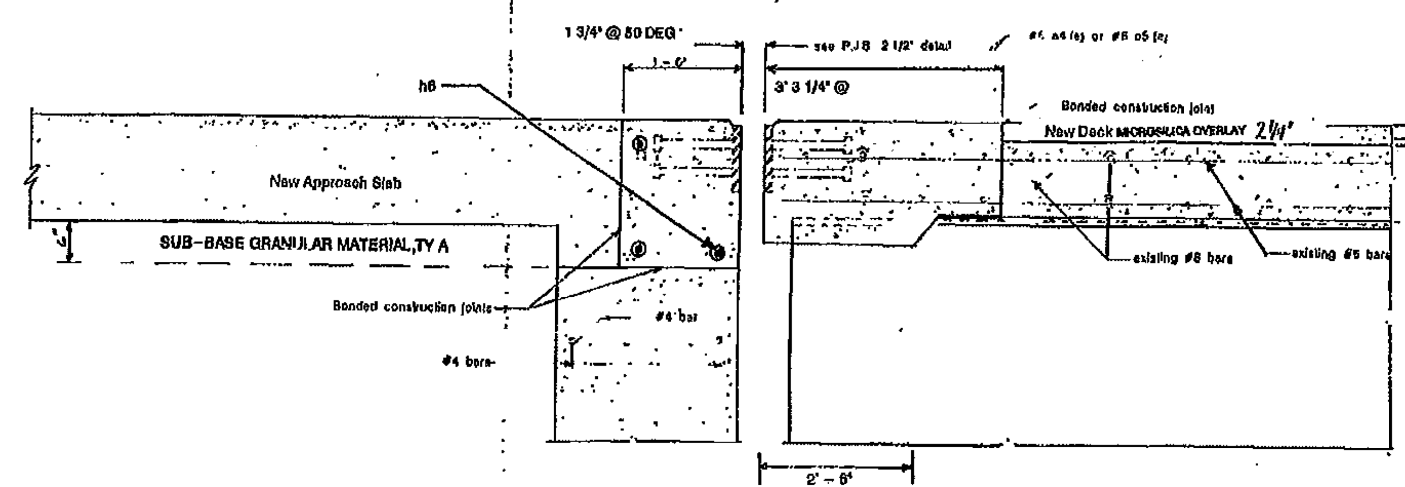


# AS-BUILT PLANS S.N. 057-0128

## FOR INFORMATION ONLY

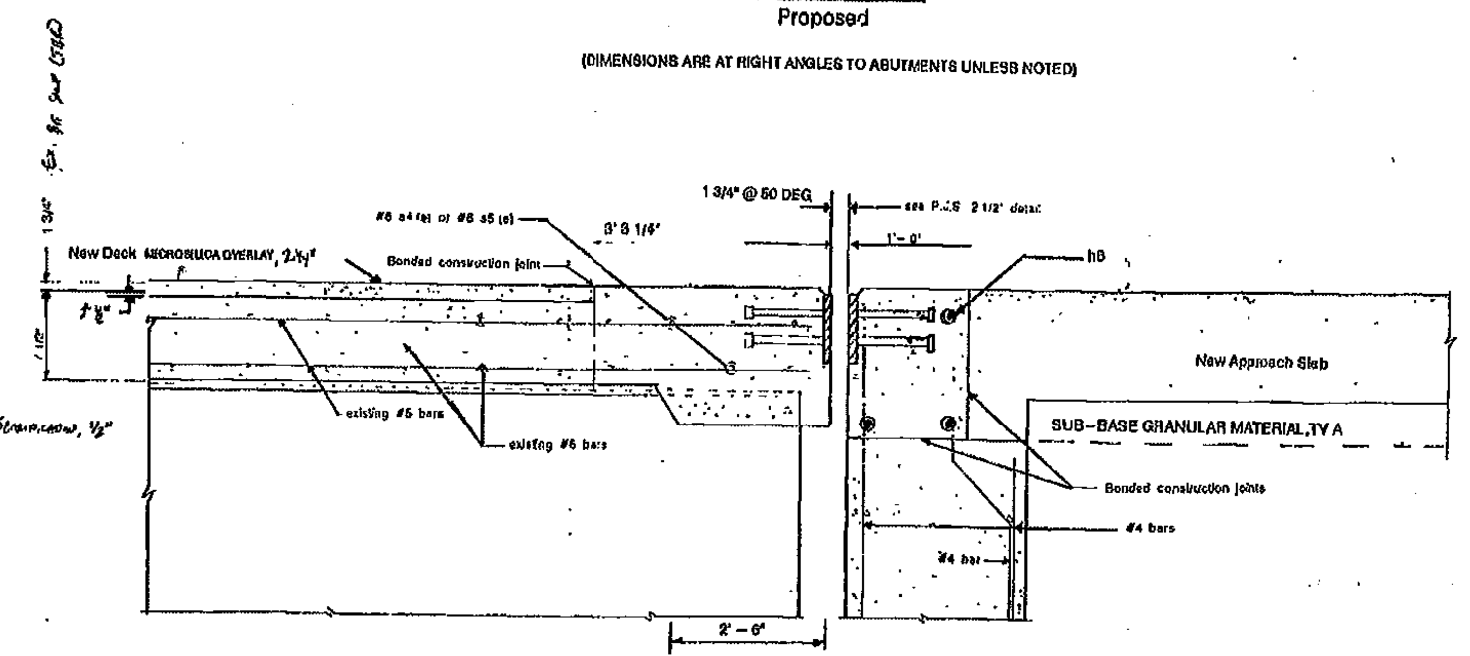
STATE OF ILLINOIS  
DEPARTMENT OF TRANSPORTATION

F.A.I. RYE	SECTION	COUNTY	TOTAL SHEET	SHEET NO.
74 (EEL)	(57-22RS-1)	MCLEAN	175	88



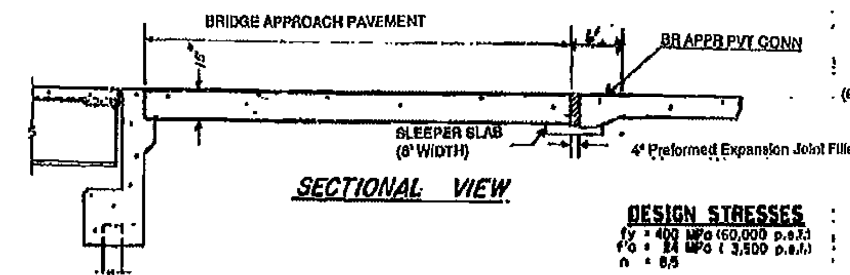
**WEST ABUTMENT Proposed**

(DIMENSIONS ARE AT RIGHT ANGLES TO ABUTMENTS UNLESS NOTED)



**EAST ABUTMENT Proposed**

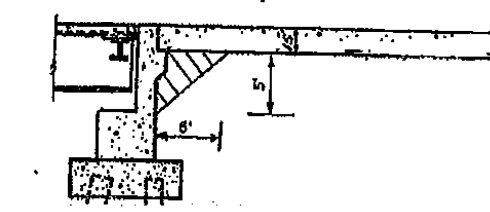
(DIMENSIONS ARE AT RIGHT ANGLES TO ABUTMENTS UNLESS NOTED)



**SECTIONAL VIEW**

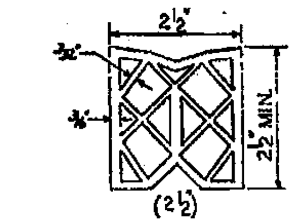
**DESIGN STRESSES**  
 fy = 402 MPa (58,000 P.S.I.)  
 fu = 514 MPa (73,500 P.S.I.)  
 n = 6.5

NOTE - SEE STD 2442 FOR FURTHER INFORMATION

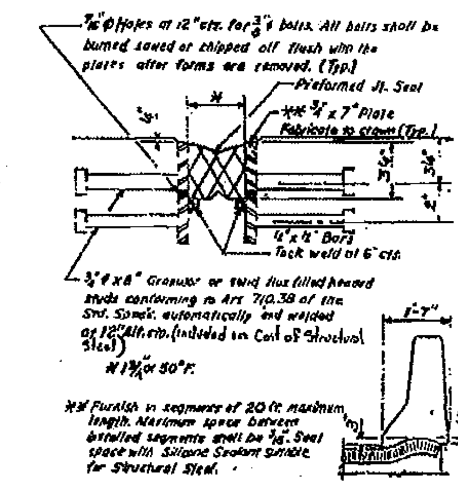


**STRUCTURE EXCAVATION QUANTITIES TOTAL FOR BOTH ENDS OF STRUCTURE**

STRUCTURE EXCAVATION	CU YD	30
SUB-BASE GRANULAR MATERIAL, TY A	TON	46
POURABLE GRANULAR EMBANKMENT	TON	01
PIPE UNDERDRAIN, 6\"/>		



**PREFORMED JOINT SEAL**



**TYPICAL END OF SEAL TREATMENTS**

Note: After fabrication all surfaces of the steel plates shall be given one shop coat of paint specified for Structural Steel.

**P. J. S. 2 1/2\"/>**

**REVISED 1-3-08**

**REVISED 1-3-08**

ILLINOIS DEPARTMENT OF TRANSPORTATION  
**PROPOSED ABUTMENT DETAILS**  
 PAI 74 SEC 57-228R-1  
 McLEAN COUNTY  
 STA. 1187+12.92  
 S. N. 057-0128

FILE NAME	USER NAME	DESIGNED	REVISED	STATE OF ILLINOIS DEPARTMENT OF TRANSPORTATION	AS-BUILT PLANS S.N. 057-0128 FOR INFORMATION ONLY	F.A.I. RYE	SECTION	COUNTY	TOTAL SHEETS	SHEET NO.		
ei:\pwork\pwork\personbr\d0184863\050648-shr-Structure-plans.dgn	personbr	TJB	8/8/11	STATE OF ILLINOIS DEPARTMENT OF TRANSPORTATION	AS-BUILT PLANS S.N. 057-0128 FOR INFORMATION ONLY	74	(57-23,57-24)RS-1	MCLEAN	175	88		
		JJB	8/10/11			SCALE:	SHEET NO. 14 OF 14 SHEETS	STA.	TO STA.	CONTRACT NO. 70648		
						ILLINOIS FED. AID PROJECT						