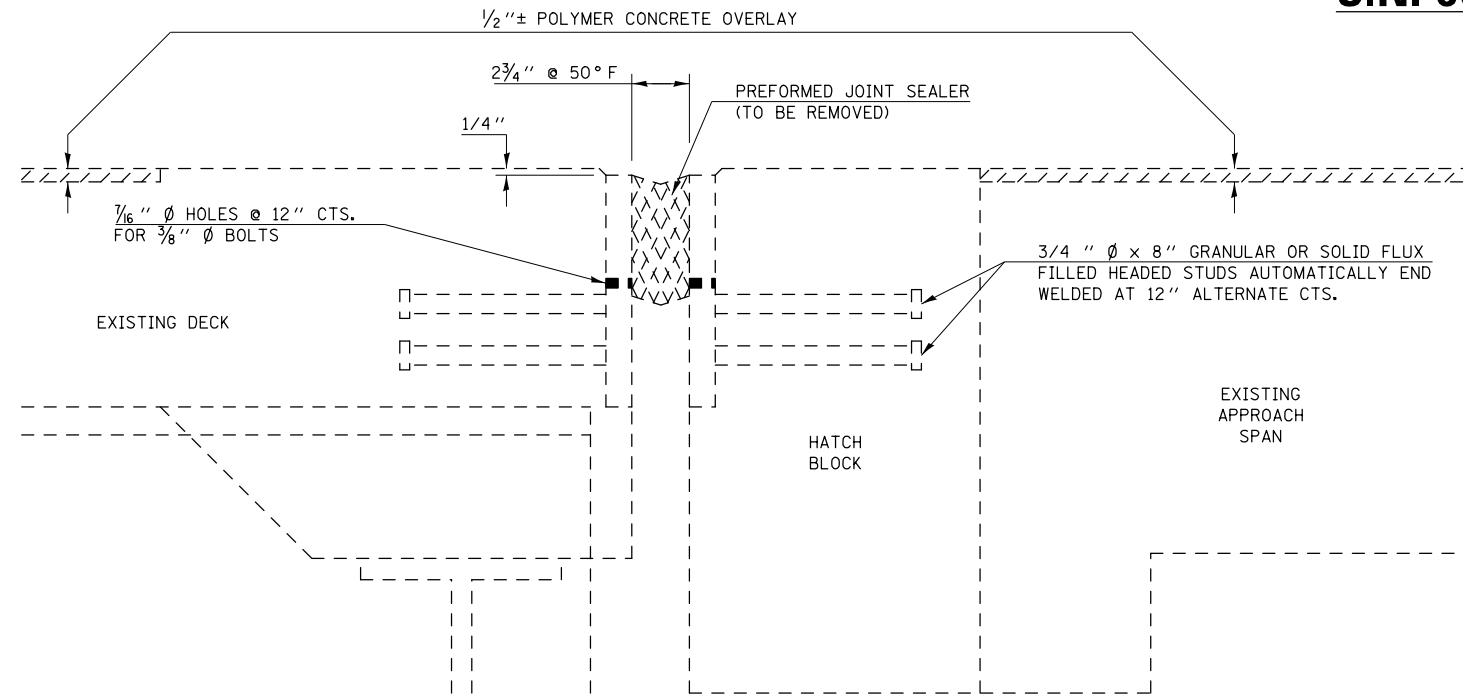
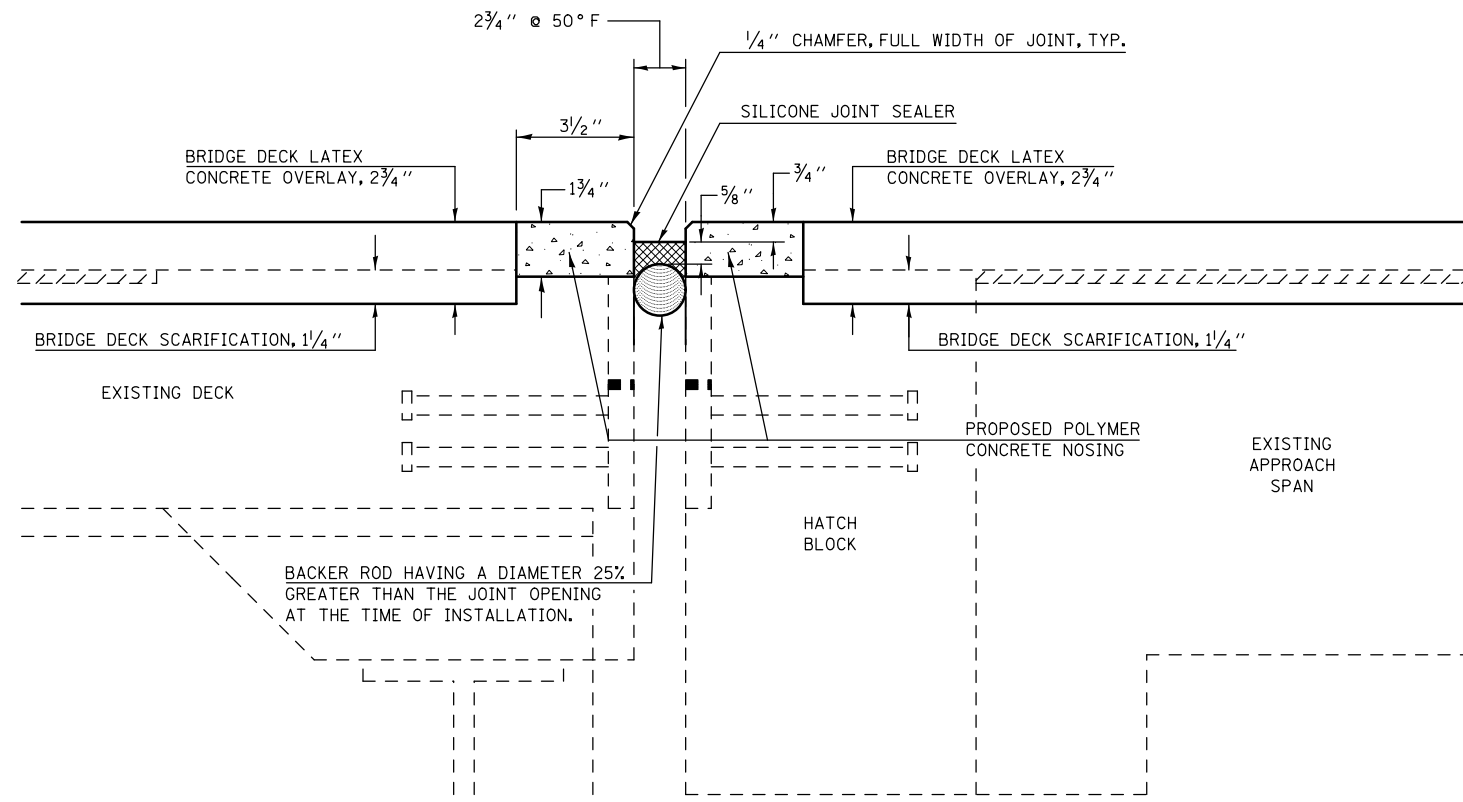


JOINT REPAIR DETAILS

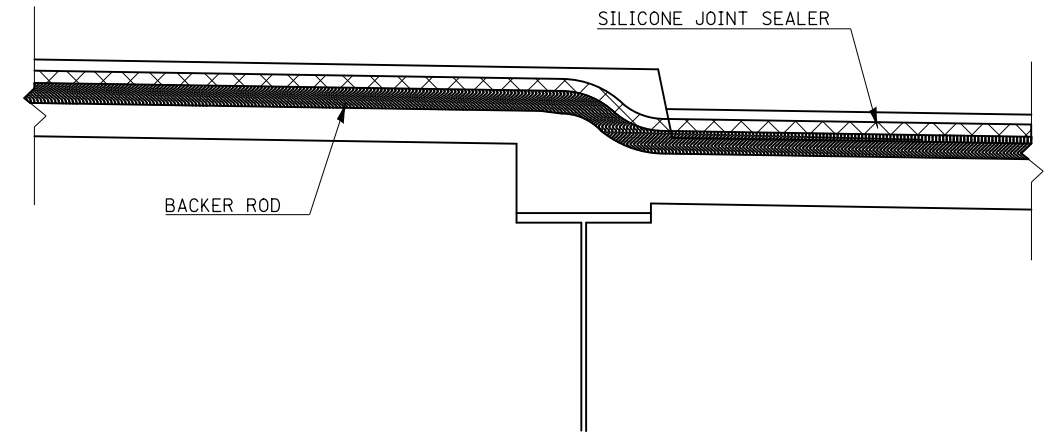
S.N. 057-0132



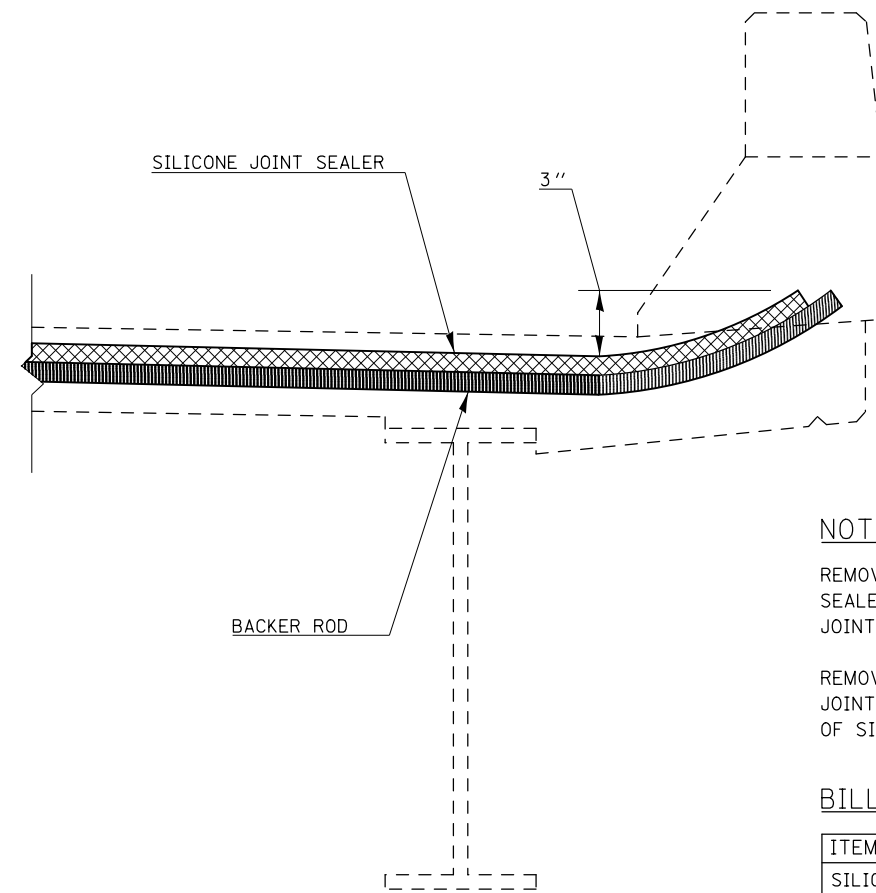
SECTION AT EXISTING JOINT



SECTION AT PROPOSED JOINT



SECTION AT VAULTED MEDIAN



SECTION AT PARAPET

NOTES

- REMOVE EXISTING PREFORMED JOINT SEALER AND REPLACE WITH SILICONE JOINT SEALER.
- REMOVAL OF THE EXISTING PREFORMED JOINT SEALER IS INCLUDED IN THE COST OF SILICONE JOINT SEALER.

BILL OF MATERIALS

ITEM	UNIT	TOTAL
SILICONE JOINT SEALER, 3"	FOOT	138.0
POLYMER CONCRETE	CU FT	8.2

FILE NAME =	USER NAME = ppersonbr	DESIGNED - GMS	REVISED -
et:\pwork\pwork\personbr\d0184863\0570648 - Bridge Repair Plans.dgn		DRAWN - GMS	REVISED -
	PLOT SCALE = 48.0000' / in.	CHECKED -	REVISED -
	PLOT DATE = 8/25/2011	DATE -	REVISED -

STATE OF ILLINOIS
DEPARTMENT OF TRANSPORTATION

JOINT REPAIR DETAILS
S.N. 057-0132

SCALE: SHEET NO. 6 OF 11 SHEETS STA. TO STA.

F.A.I. RTE.	SECTION	COUNTY	TOTAL SHEETS	SHEET NO.
74	(57-23,57-24)RS-1	MCLEAN	175	95
ILLINOIS FED. AID PROJECT			CONTRACT NO. 70648	