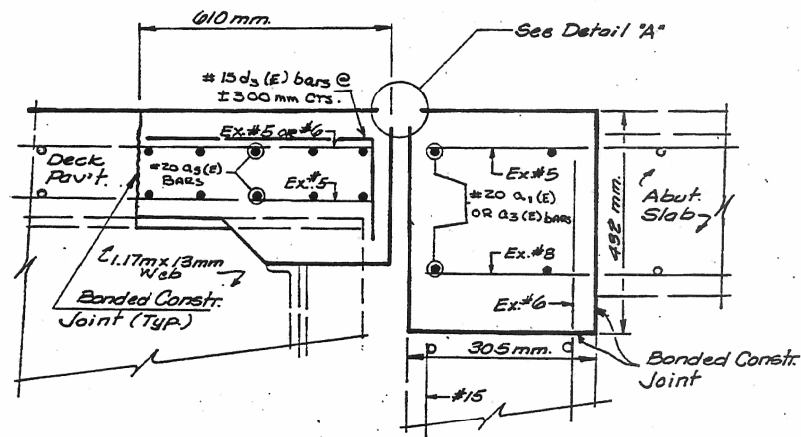


# AS-BUILT PLANS - S.N. 057-0132 FOR INFORMATION ONLY

FAI	SECTION	COUNTY	TOTAL SHEETS	SHEET NO.
74	*	McLEAN	47	29
STA.		TO STA.		
* (57-23)RS,HB-1				

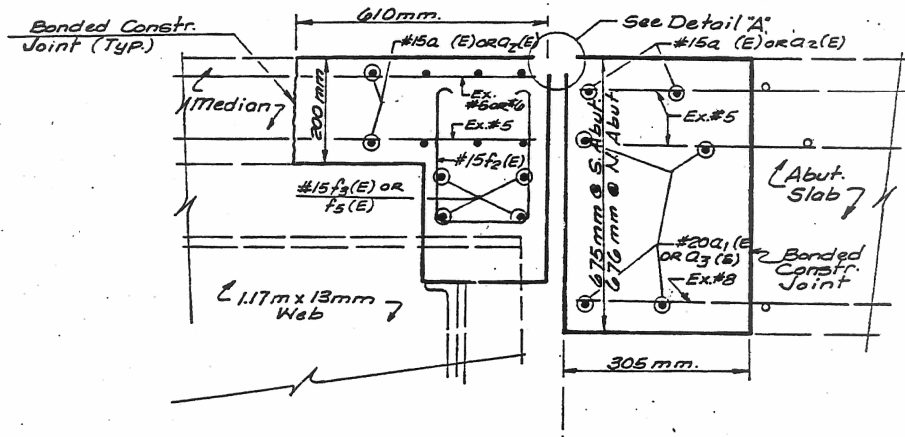


**Notes:** Exist. Longitudinal Re-Bars shown are to be cleaned and incorporated into New Concrete. Exist. Transverse Reinforcement Bars in the Repair Area shall be Removed.

**EXPANSION JOINT RECONSTRUCTION**  
(@ Pavement)

See exist. Deck Plan view for actual Re-bar configuration.

NOTE: ALL BONDED CONSTRUCTION JOINTS NOTED IN THESE DETAILS SHALL BE MADE USING THE PROCEDURES CONTAINED IN ARTICLE 503.09 (a)(2) OF THE STANDARD SPECIFICATIONS.

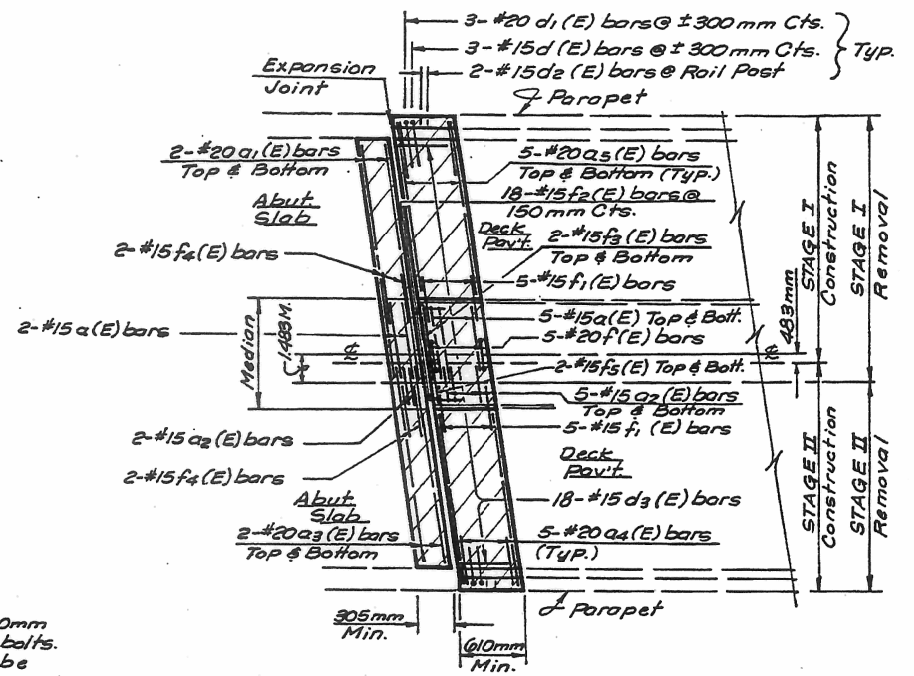


**Notes:** Exist. Longitudinal Re-Bars shown are to be cleaned and incorporated into New Concrete. Exist. Transverse Reinforcement Bars in the Repair Area shall be Removed.

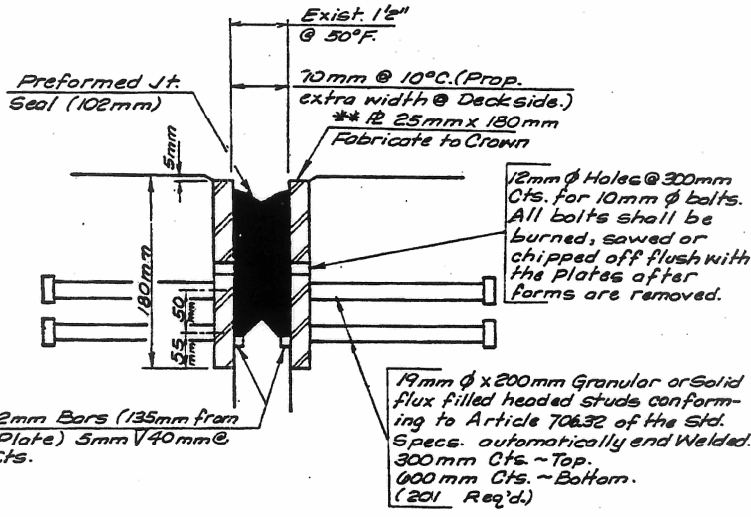
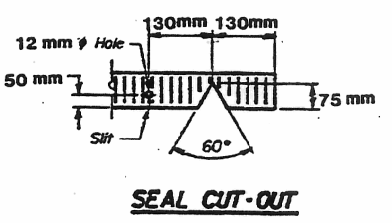
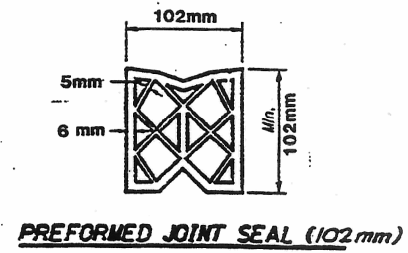
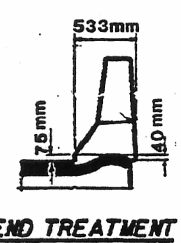
**EXPANSION JOINT RECONSTRUCTION**  
(@ Median)

See exist. Deck Plan view for actual Re-bar configuration.

ANY EXISTING REINFORCEMENT BARS TO REMAIN THAT ARE DAMAGED DURING CONCRETE REMOVAL SHALL BE REPLACED WITH AN APPROVED BAR SPLICER OR ANCHORAGE SYSTEM. COST INCIDENTAL TO "CONCRETE REMOVAL".



**REMOVAL LIMITS & REINFORCEMENT LAYOUT @ JOINT REPAIR (NO. & SO. Abuts.)**  
N.T.S.



\*\*Furnish in segments of 6m maximum Length. Maximum space between installed segments shall be 5mm. Seal space with Silicone Sealant suitable for Structural Steel.

AFTER FABRICATION ALL SURFACES OF THE STEEL PLATES SHALL BE GIVEN ONE SHOP COAT OF THE PAINT SPECIFIED FOR STRUCTURAL STEEL. NO FIELD PAINTING REQUIRED.

REVISIONS	
NAME	DATE
SPR 12	6/10/96

ILLINOIS DEPARTMENT OF TRANSPORTATION

## EXPANSION JOINT REHABILITATION DETAILS

DRAWN BY  
CHECKED BY

DATE

FILE NAME =	USER NAME = ppersonbr	DESIGNED - GMS	REVISED -
et:\pwork\pwork\personbr\d0184863\0570648 - Bridge Repair Plans.dgn		DRAWN - GMS	REVISED -
PLOT SCALE = 48.0000 / in.		CHECKED -	REVISED -
PLOT DATE = 8/25/2011		DATE -	REVISED -

**STATE OF ILLINOIS  
DEPARTMENT OF TRANSPORTATION**

<b>AS-BUILT PLANS - S.N. 057-0132 FOR INFORMATION ONLY</b>	
SCALE:	SHEET NO. 11 OF 11 SHEETS
STA.	TO STA.

F.A.I. RTE.	SECTION	COUNTY	TOTAL SHEETS	SHEET NO.
74	(57-23,57-24)RS-1	McLEAN	175	100
CONTRACT NO. 70648				
ILLINOIS FED. AID PROJECT				