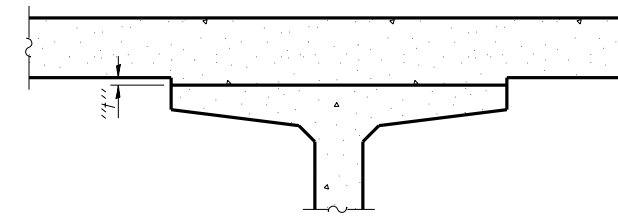


**DEAD LOAD DEFLECTION DIAGRAM**

(Includes weight of concrete, excluding beams).

Note:

The above deflections are not to be used in the field if the engineer is working from the grade elevations adjusted for dead load deflections as shown below and on sheet 6 of 22.



To determine "t": After all precast prestressed beams have been erected, elevations of the top flanges of the beams shall be taken at intervals shown below. These elevations subtracted from the "Theoretical Grade Elevations Adjusted for Dead Load Deflections" show below and on sheet 6 of 22, minus slab thickness, equals the fillet heights "t" above top flanges of beams.

**FILLET HEIGHTS**

**BEAM 1**

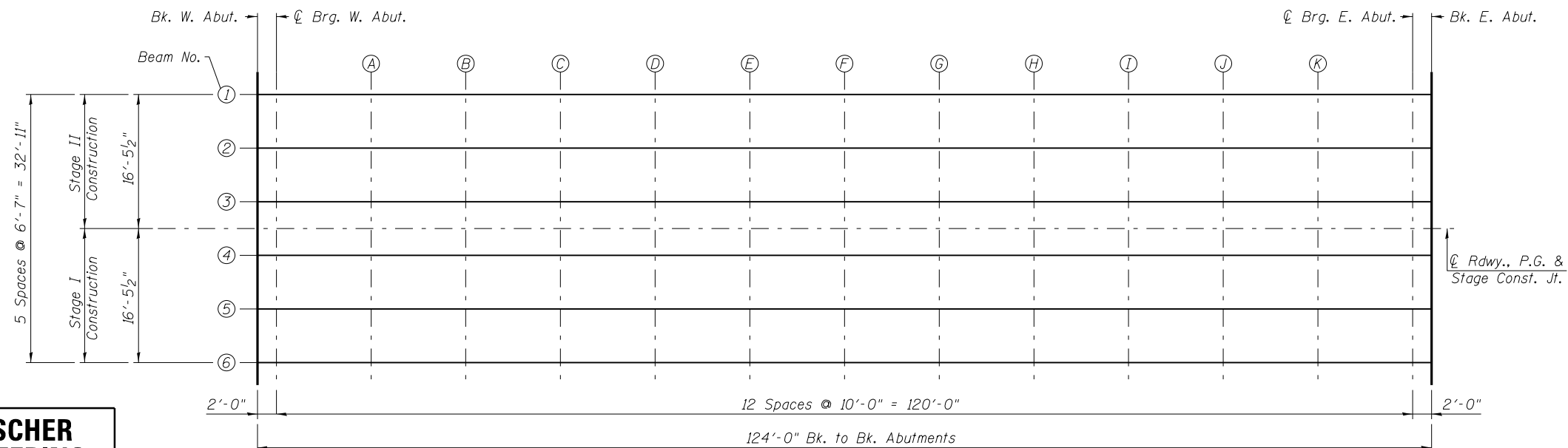
Location	Station	Offset	Theoretical Grade Elevations	Theoretical Grade Elevations Adjusted For Dead Load Deflection
Bk. W. Abut.	1945+16.24	-16.458	531.62	531.62
C. Brg. W. Abut.	1945+18.24	-16.458	531.51	531.51
A	1945+28.24	-16.458	530.96	530.99
B	1945+38.24	-16.458	530.40	530.47
C	1945+48.24	-16.458	529.84	529.94
D	1945+58.24	-16.458	529.29	529.40
E	1945+68.24	-16.458	528.73	528.86
F	1945+78.24	-16.458	528.17	528.31
G	1945+88.24	-16.458	527.62	527.75
H	1945+98.24	-16.458	527.06	527.18
I	1946+08.24	-16.458	526.51	526.60
J	1946+18.24	-16.458	525.95	526.01
K	1946+28.24	-16.458	525.39	525.43
C. Brg. E. Abut.	1946+38.24	-16.458	524.84	524.84
Bk. E. Abut.	1946+40.24	-16.458	524.72	524.72

**BEAM 2**

Location	Station	Offset	Theoretical Grade Elevations	Theoretical Grade Elevations Adjusted For Dead Load Deflection
Bk. W. Abut.	1945+16.24	-9.875	531.75	531.75
C. Brg. W. Abut.	1945+18.24	-9.875	531.64	531.64
A	1945+28.24	-9.875	531.08	531.12
B	1945+38.24	-9.875	530.53	530.59
C	1945+48.24	-9.875	529.97	530.07
D	1945+58.24	-9.875	529.41	529.53
E	1945+68.24	-9.875	528.86	528.99
F	1945+78.24	-9.875	528.30	528.44
G	1945+88.24	-9.875	527.74	527.88
H	1945+98.24	-9.875	527.19	527.31
I	1946+08.24	-9.875	526.63	526.73
J	1946+18.24	-9.875	526.07	526.14
K	1946+28.24	-9.875	525.52	525.55
C. Brg. E. Abut.	1946+38.24	-9.875	524.96	524.96
Bk. E. Abut.	1946+40.24	-9.875	524.85	524.85

**BEAM 3**

Location	Station	Offset	Theoretical Grade Elevations	Theoretical Grade Elevations Adjusted For Dead Load Deflection
Bk. W. Abut.	1945+16.24	-3.292	531.85	531.85
C. Brg. W. Abut.	1945+18.24	-3.292	531.74	531.74
A	1945+28.24	-3.292	531.19	531.22
B	1945+38.24	-3.292	530.63	530.70
C	1945+48.24	-3.292	530.07	530.17
D	1945+58.24	-3.292	529.52	529.64
E	1945+68.24	-3.292	528.96	529.09
F	1945+78.24	-3.292	528.40	528.54
G	1945+88.24	-3.292	527.85	527.98
H	1945+98.24	-3.292	527.29	527.41
I	1946+08.24	-3.292	526.73	526.83
J	1946+18.24	-3.292	526.18	526.25
K	1946+28.24	-3.292	525.62	525.66
C. Brg. E. Abut.	1946+38.24	-3.292	525.06	525.06
Bk. E. Abut.	1946+40.24	-3.292	524.95	524.95



**FRAMING PLAN**