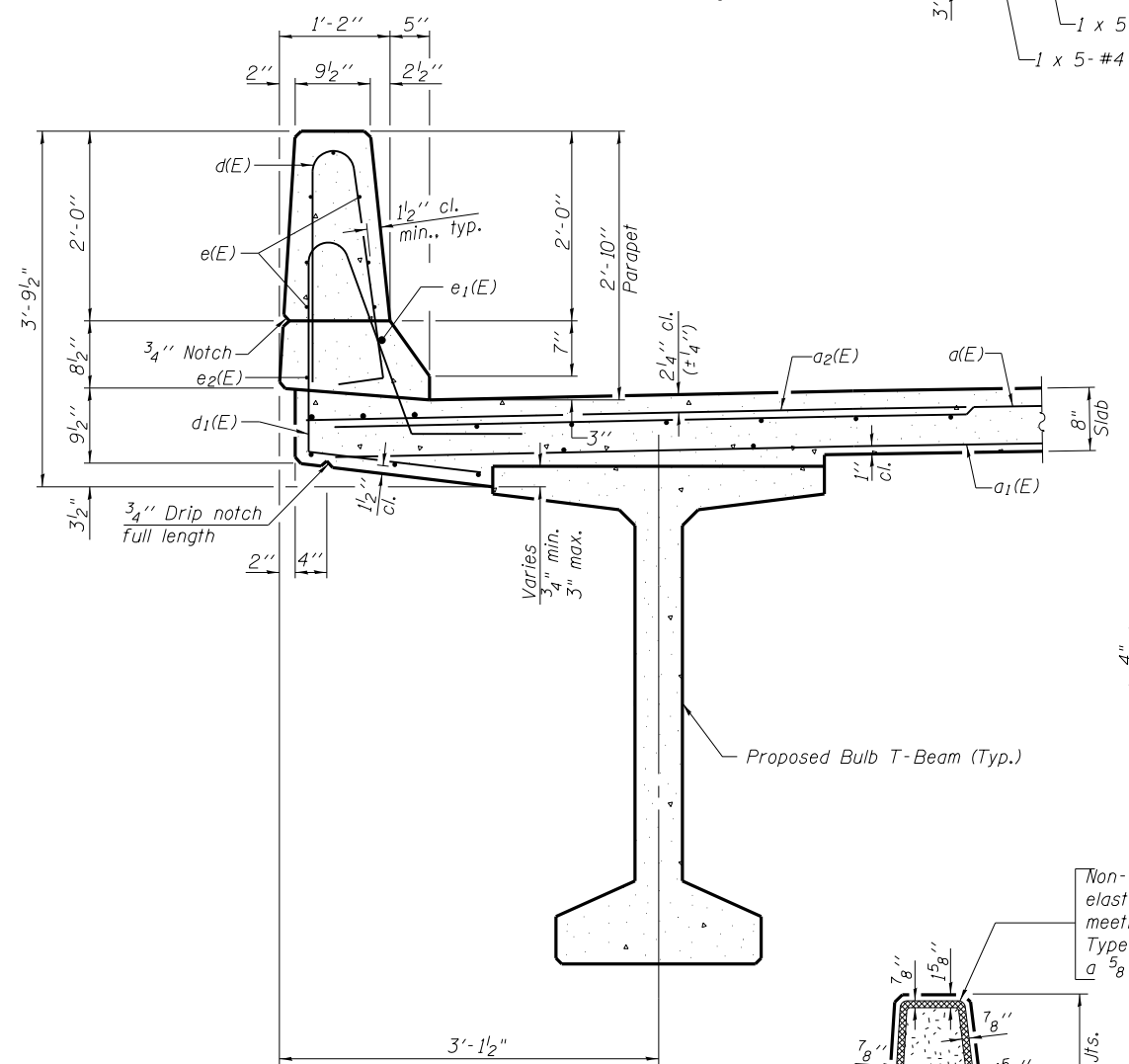
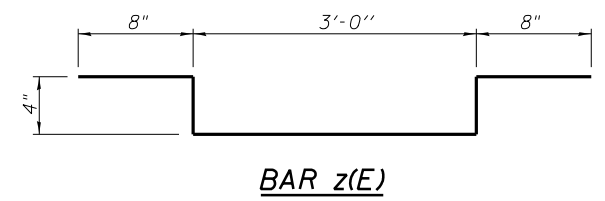


INSIDE ELEVATION OF PARAPET
(Symmetrical About C Bridge)

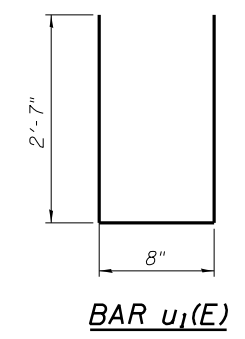
MINIMUM BAR LAP
(Parapet)
#4 bar = 2'-0"
#8 bar = 5'-2"



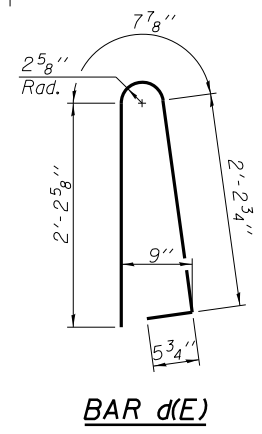
SECTION THRU PARAPET



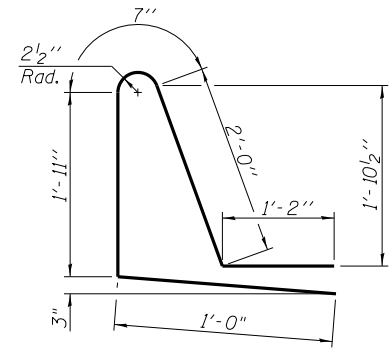
BAR z(E)



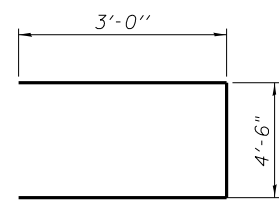
BAR u1(E)



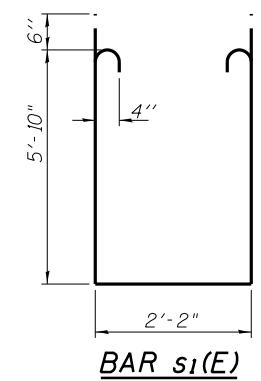
BAR d(E)



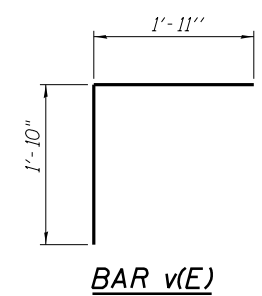
BAR d1(E)



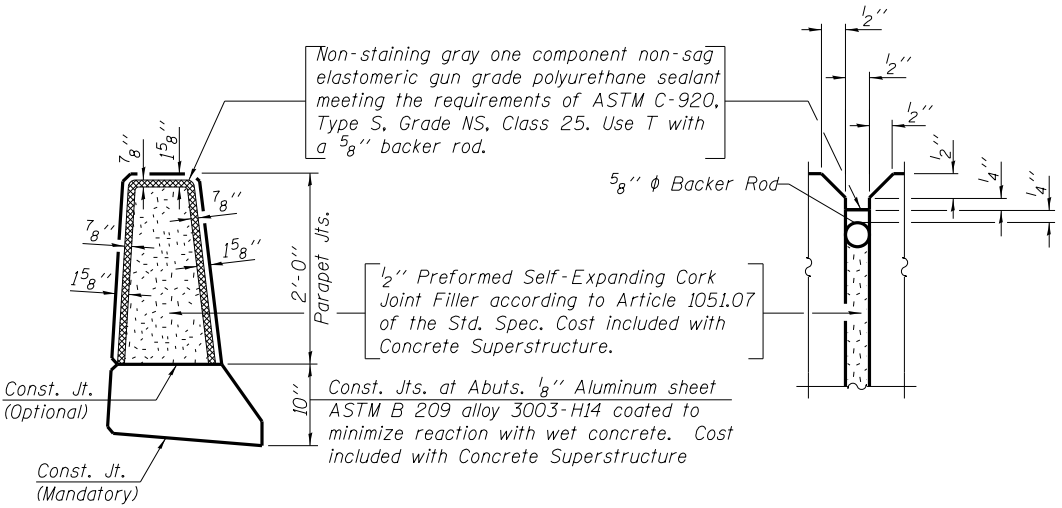
BAR s(E)



BAR s1(E)



BAR v(E)



PARAPET JOINT DETAILS

SUPERSTRUCTURE BILL OF MATERIAL

Bar	No.	Size	Length	Shape
d(E)	420	#5	19'-2"	—
a1(E)	296	#5	19'-0"	—
a2(E)	212	#6	6'-6"	—
b(E)	168	#5	32'-6"	—
b1(E)	220	#5	26'-6"	—
d(E)	268	#5	5'-7"	⌋
d1(E)	268	#5	6'-8"	⌋
e(E)	112	#4	15'-0"	—
e1(E)	10	#8	28'-7"	—
e2(E)	10	#4	26'-1"	—
m(E)	20	#6	19'-2"	—
m1(E)	12	#6	7'-9"	—
m2(E)	10	#6	5'-0"	—
m3(E)	4	#6	2'-3"	—
s(E)	36	#5	10'-6"	⌋
s1(E)	26	#4	14'-10"	⌋
u1(E)	80	#4	5'-10"	U
v(E)	80	#5	3'-9"	⌋
z(E)	204	#4	5'-0"	⌋
Reinforcement Bars, Epoxy Coated			Lbs.	36,350
Concrete Superstructure			Cu. Yds.	214.2
Bar Splicers			Each	386

Bars indicated thus 1 x 5-#8 etc. indicates 1 line of bars with 5 lengths per line.

HOELSCHER ENGINEERING
Fairview Heights, IL
Springfield, IL
Champaign, IL

FILE NAME = IL104 over Liehr Creek.dgn	USER NAME =	DESIGNED - CMW	REVISED -
		CHECKED - SAL	REVISED -
	PLOT SCALE =	DRAWN - TJW	REVISED -
	PLOT DATE =	CHECKED - SAL	REVISED -

STATE OF ILLINOIS
DEPARTMENT OF TRANSPORTATION

SUPERSTRUCTURE DETAILS
F.A.P.-745 (IL 104) OVER LIEHR CREEK - S.N. 075-0512

F.A.P. RTE.	SECTION	COUNTY	TOTAL SHEETS	SHEET NO.
745	108B-2	PIKE	64	33
				CONTRACT NO. 72981

SHEET NO. 9 OF 22 SHEETS

FED. RD. DIST. NO. 6 | ILLINOIS FED. AID PROJECT