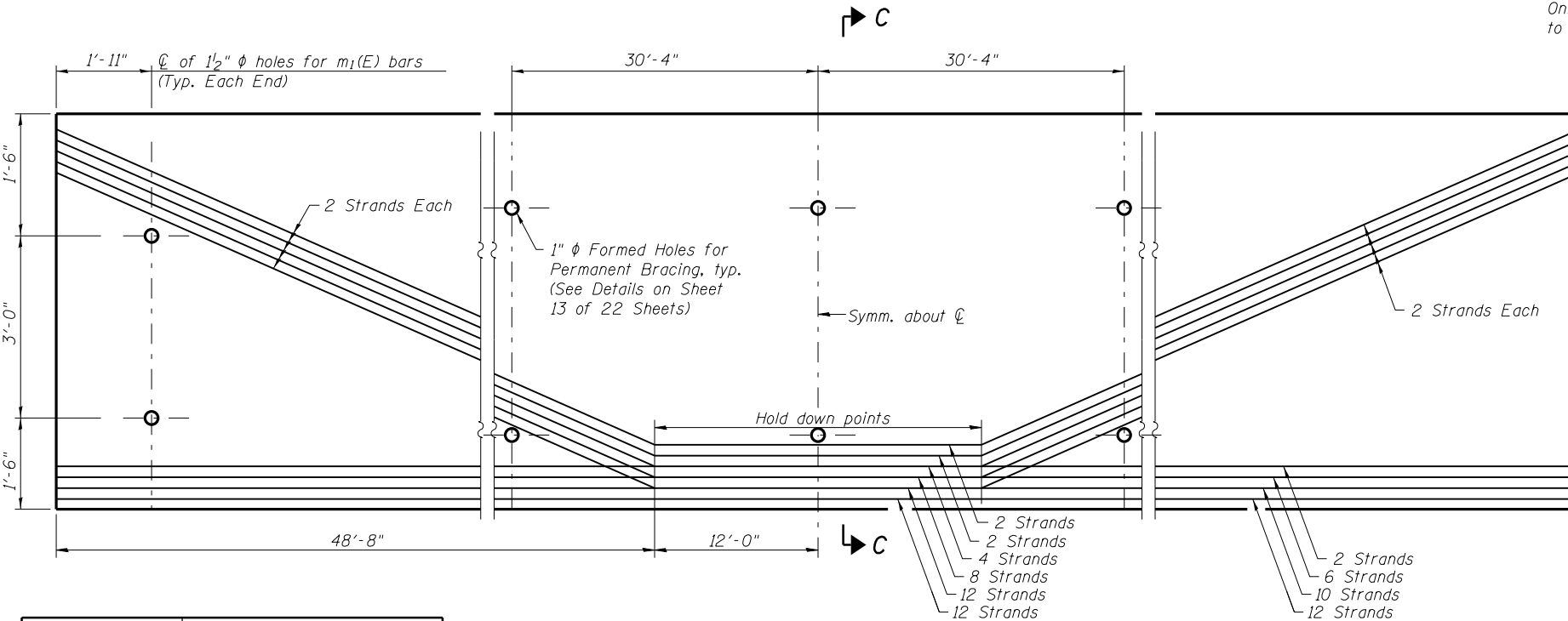
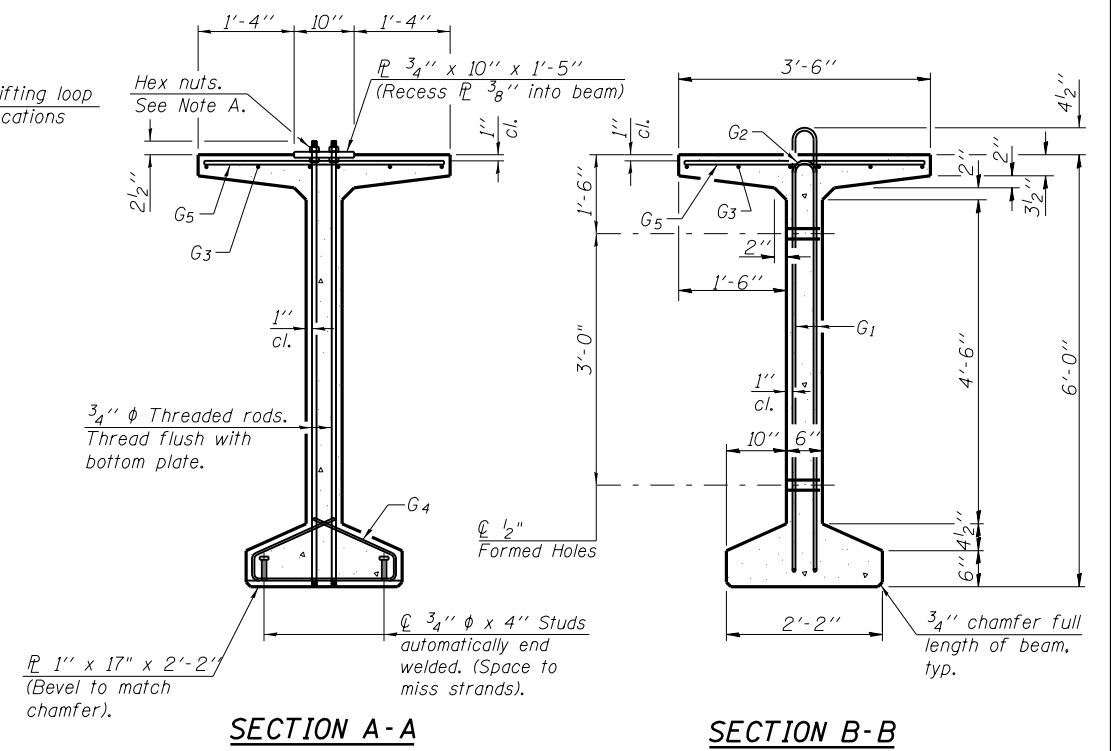


ELEVATION OF BEAM
(Showing reinforcement & dimensions)

* 4 spaces at 3/4" = 1'-1".
** 5-3/4" φ threaded dowel rods at 3/4" cts., each face.



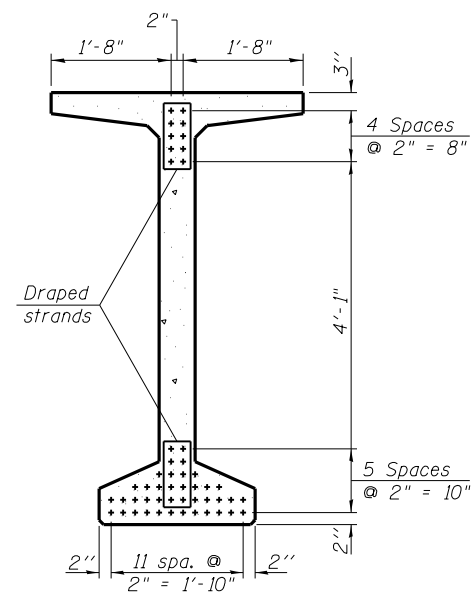
ELEVATION OF BEAM
(Showing prestressing steel)



Note A:
Hex nuts (top and bottom) with lock washers (top). Only tighten sufficiently to compress lock washers.

SECTION A-A

SECTION B-B



SECTION C-C

*****BAR LIST
ONE BEAM ONLY**

Bar	No.	Size	Length	Shape
G ₁	203	#4	13'-5"	∩L
G ₂	20	#4	11'-8"	∩
G ₃	30	#6	26'-6"	—
G ₄	56	#3	4'-11"	∩
G ₅	103	#5	3'-4"	—

***For information only
Notes:
See sheet 15 of 22 for additional details and Bill of Material.
Required release strength, f'ci, shall be 6,000 psi.

PBT-4-72

7-1-10

FILE NAME = IL104 over Liehr Creek.dgn	USER NAME =	DESIGNED - CMW	REVISED -
		CHECKED - SAL	REVISED -
		DRAWN - TJW	REVISED -
		CHECKED - SAL	REVISED -

STATE OF ILLINOIS
DEPARTMENT OF TRANSPORTATION

72" PPC BULB T-BEAM
F.A.P.-745 (IL 104) OVER LIEHR CREEK - S.N. 075-0512

F.A.P. RTE.	SECTION	COUNTY	TOTAL SHEETS	SHEET NO.
745	108B-2	PIKE	64	38
CONTRACT NO. 72981				

SHEET NO. 14 OF 22 SHEETS

FED. RD. DIST. NO. 6 ILLINOIS FED. AID PROJECT