

NOTES

Inserts for $\frac{3}{4}$ " ϕ threaded dowel rods, when specified, are to be two strut, ferrule type for interior beams and single ferrule, flared loop type for exterior beams. Prestressing steel shall be uncoated high strength, low relaxation 7-wire strand, Grade 270. The nominal diameter shall be $\frac{1}{2}$ " and the nominal cross-sectional area shall be 0.153 sq. in.

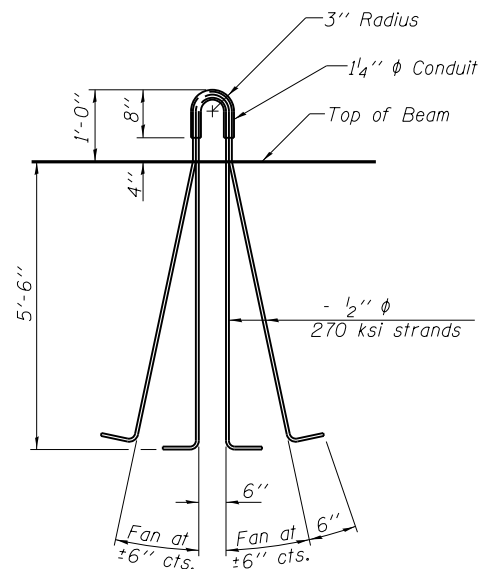
Reinforcement bars shall conform to ASTM A 706, Grade 60. (See Special Provisions). A minimum $2\frac{1}{2}$ " ϕ lifting pin shall be used to engage the lifting loops during handling. Tilt G_6 bars when necessary to maintain $1\frac{1}{2}$ " clearance.

The top and bottom plates shall be AASHTO M270 Grade 50. The bottom plates and studs shall be galvanized according to AASHTO M111. Top plates and threaded rods need not be galvanized.

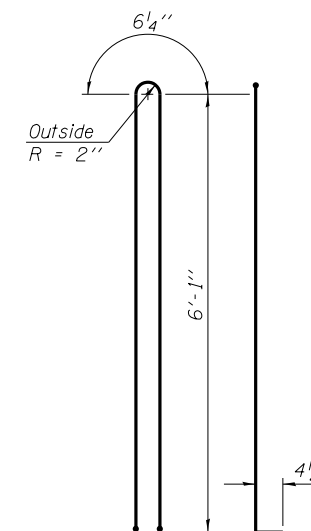
Threaded rods shall be ASTM F 1554 Grade 55.

The G_6 bar assembly shall be capable of developing 125 percent of the yield strength of the grade 60 reinforcement bar components. The assembly shall allow completion of the splice without turning of the hook bar. The hook bar shall be threaded such that the entire coupler can be threaded onto the hook bar.

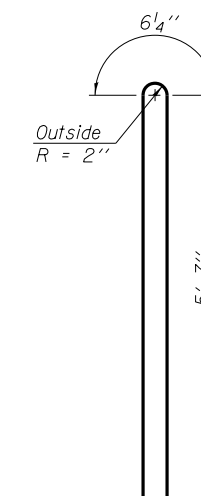
Beams requiring G_6 bar assemblies shall not be released from the fabricator until they have attained 45 days of age or older.



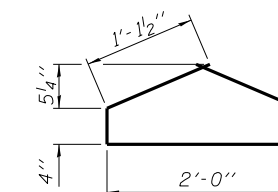
LIFTING LOOP DETAIL



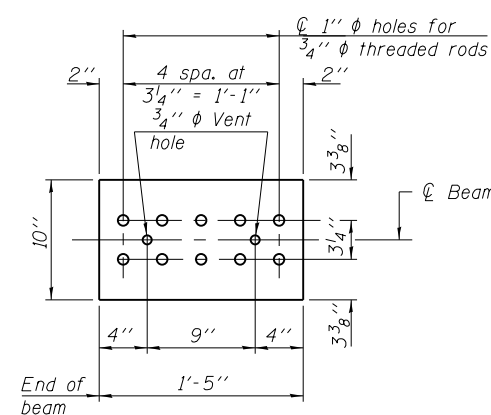
BAR G1



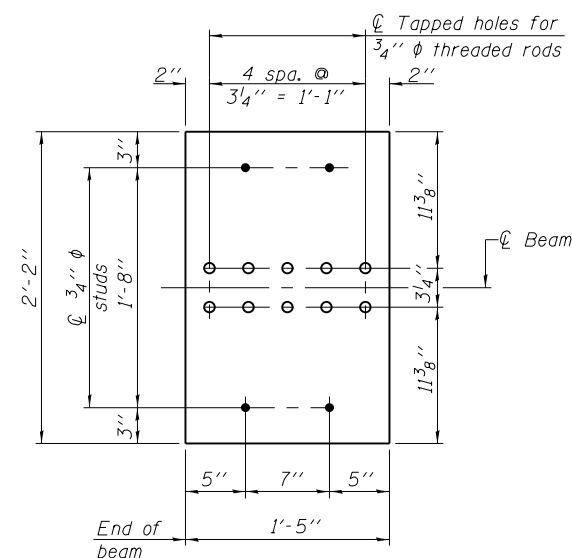
BAR G2



BAR G4



TOP PLATE



BOTTOM PLATE

See bearing details for pintle hole locations when required.

BILL OF MATERIAL

Item	Unit	Total
Furnishing and Erecting Precast Prestressed Concrete Bulb T-Beams, 72"	Ft.	728

HOELSCHER ENGINEERING
Fairview Heights, IL
Springfield, IL
Champaign, IL

PBT-4-72D

1-28-11

FILE NAME = IL104 over Liehr Creek.dgn	USER NAME =	DESIGNED - CMW	REVISED -
		CHECKED - SAL	REVISED -
	PLOT SCALE =	DRAWN - TJW	REVISED -
	PLOT DATE =	CHECKED - SAL	REVISED -

**STATE OF ILLINOIS
DEPARTMENT OF TRANSPORTATION**

**72" PPC BULB T-BEAM DETAILS
F.A.P.-745 (IL 104) OVER LIEHR CREEK - S.N. 075-0512**

SHEET NO. 15 OF 22 SHEETS

F.A.P. RTE.	SECTION	COUNTY	TOTAL SHEETS	SHEET NO.
745	108B-2	PIKE	64	39
			CONTRACT NO. 72981	
FED. RD. DIST. NO. 6 ILLINOIS FED. AID PROJECT				