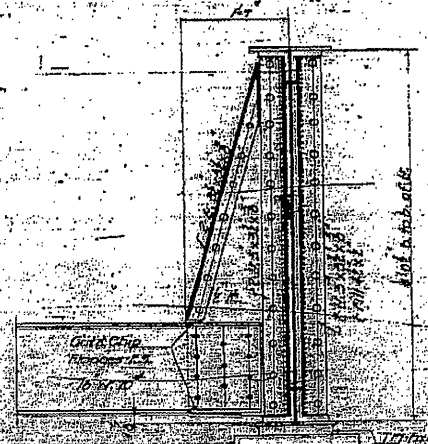
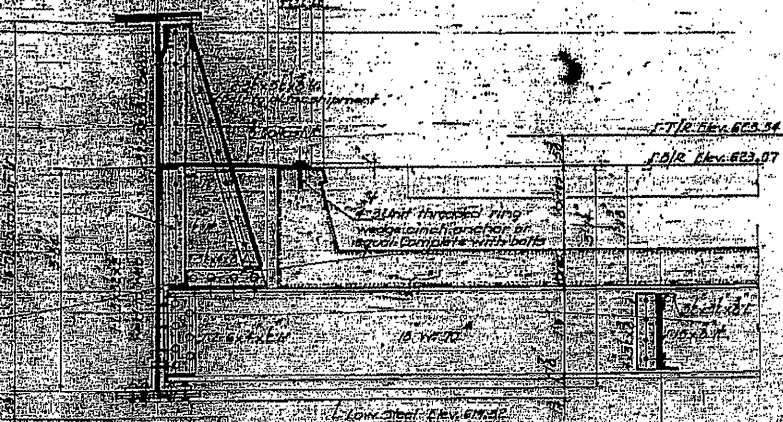
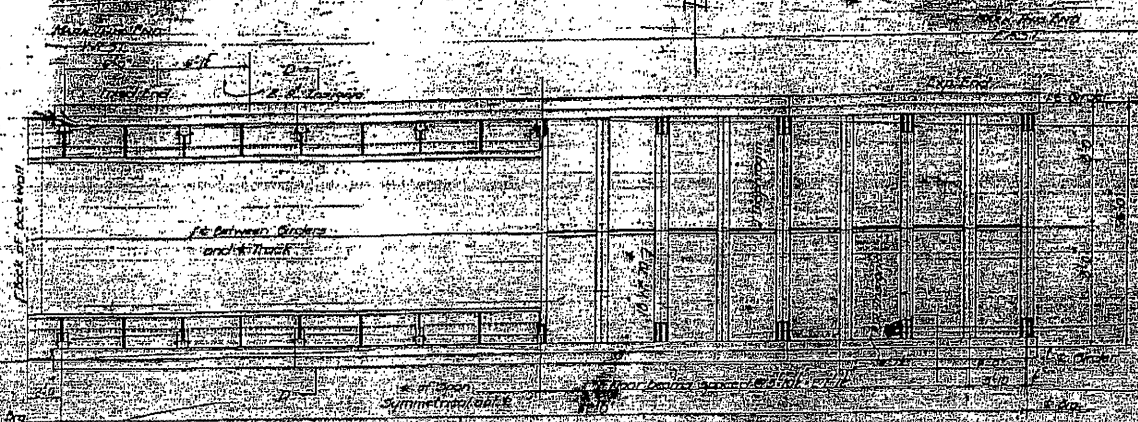


STATE OF ILLINOIS
DEPARTMENT OF PUBLIC WORKS & BUILDINGS
DIVISION OF HIGHWAYS

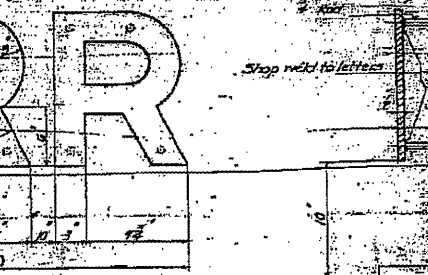
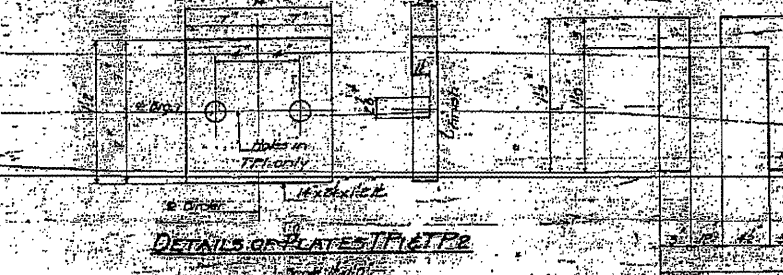
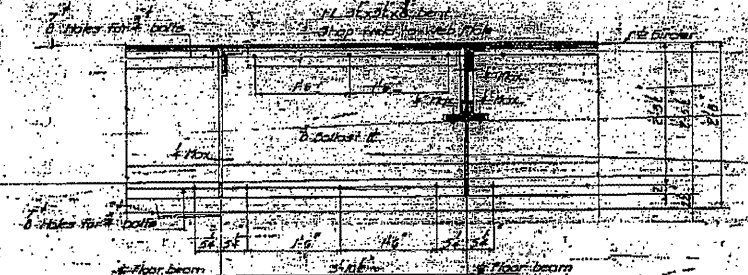
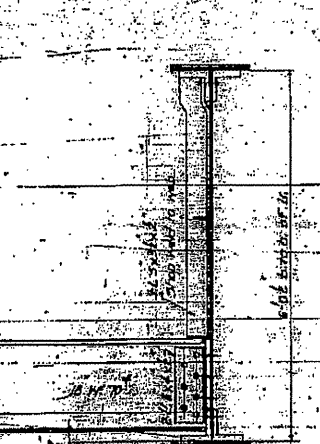
| | | | | |
|----------|-------------|--------|-----------|--------------|
| DATE | PROJECT | COUNTY | SHEET NO. | TOTAL SHEETS |
| 11-25-58 | Springfield | 13 | 16 | 34 SHEETS |



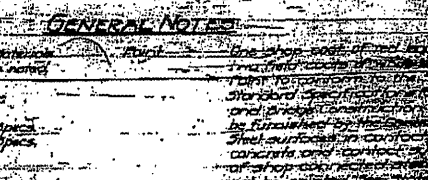
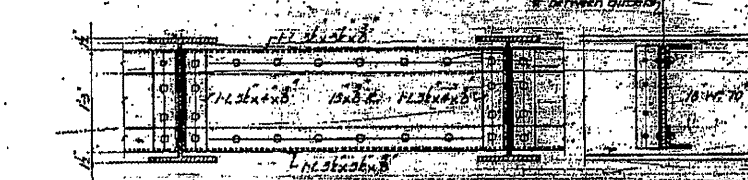
Half Plan
Showing all members and steel
Scale: 1/4" = 1'-0"

Half Section D-D
Scale: 1/4" = 1'-0"

Section B-B
Scale: 1/4" = 1'-0"



Section C-C
Scale: 1/4" = 1'-0"



Section C-C
Scale: 1/4" = 1'-0"

Detail of Typical Diaphragm
Scale: 1/4" = 1'-0"

Details of Plates D1 & D2
Scale: 1/4" = 1'-0"

Detail of P.C. Span
Scale: 1/4" = 1'-0"

| | |
|----------|----------|
| COMPUTED | 12.7.58 |
| CHECKED | |
| DRAWN | W. J. W. |
| CHECKED | W. J. W. |
| APPROVED | |

| | |
|----------|-----------------|
| DESIGNED | August 22, 1947 |
| DRAWN | W. J. W. |
| CHECKED | W. J. W. |
| APPROVED | |

| | |
|----------------------|---------------------|
| DETAIL OF LEAD PLATE | Scale: 1/4" = 1'-0" |
| DETAIL OF PINTLE | Scale: 1/4" = 1'-0" |

GENERAL NOTES:
1. All steel work shall be painted with a heavy coat of zinc-rich primer and two coats of red lead paint.
2. All steel work shall be galvanized.
3. All steel work shall be protected with a heavy coat of zinc-rich primer and two coats of red lead paint.
4. All steel work shall be galvanized.
5. All steel work shall be protected with a heavy coat of zinc-rich primer and two coats of red lead paint.
6. All steel work shall be galvanized.

| | | | |
|-----------|-----------|----------|-----------|
| FILE NAME | USER NAME | DESIGNED | REVISIONS |
| FILE# | #USER# | DRAWN | REVISIONS |
| | | CHECKED | REVISIONS |
| | | DATE | REVISIONS |

STATE OF ILLINOIS
DEPARTMENT OF TRANSPORTATION

084-9900 (FOR INFORMATION ONLY)
SCALE: SHEET NO. OF SHEETS STA. TO STA.

| | | | |
|-------------|--------------------|----------|--------------------|
| F.A.P. RITE | SECTION | COUNTY | TOTAL SHEETS |
| 866 | D-5 PAINTING 2898- | SANGAMON | 13 |
| | 2012 | | 6 |
| | | | CONTRACT NO. T2C48 |