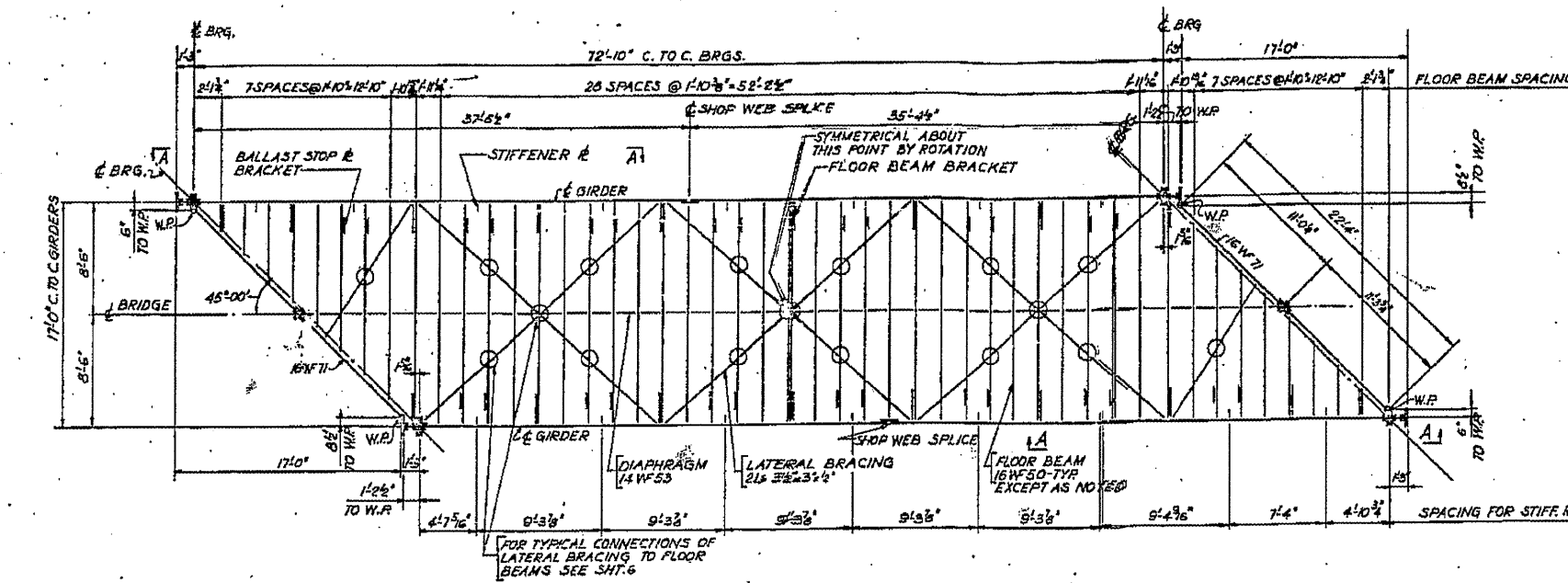
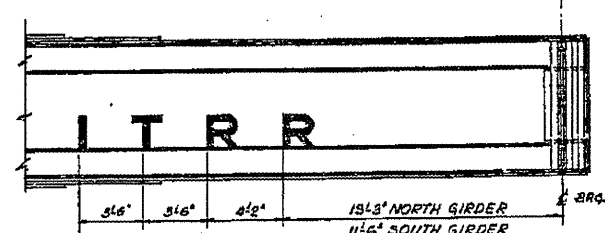


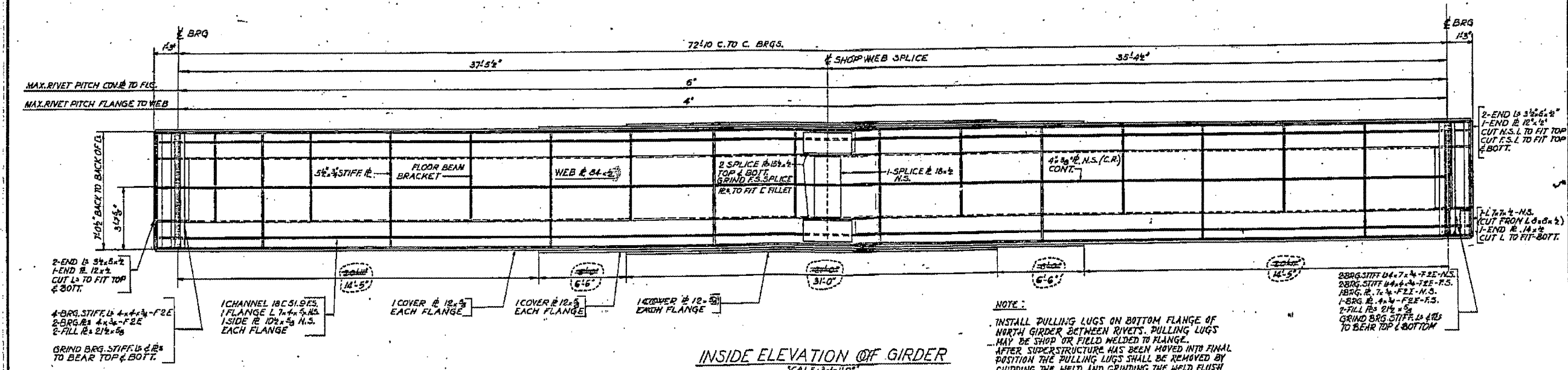
ROUTE NO.	SECTION	COUNTY	TOTAL SHEETS	SHEET NO.
F.A. 5	110X-75B	SANGAMON	25	7
TO STA.				
STREET 3 OF 19				



FRAMING PLAN
SCALE: 3/8" = 1'-0"



SECTION A-A
SHOWING LOCATION OF LETTERS
SCALE: 1/2" = 1'-0"



INSIDE ELEVATION OF GIRDER
SCALE: 3/8" = 1'-0"

NOTE:
INSTALL PULLING LUGS ON BOTTOM FLANGE OF NORTH GIRDER BETWEEN RIVETS. PULLING LUGS MAY BE SHOP OR FIELD WELDED TO FLANGE. AFTER SUPERSTRUCTURE HAS BEEN MOVED INTO FINAL POSITION THE PULLING LUGS SHALL BE REMOVED BY CHIPPING THE WELD AND GRINDING THE WELD FLUSH WITH THE COVER PLATE.

STEEL FRAMING PLAN
UNDERPASS
I.T.R.R. BRIDGE No. F-71.5
OVER SOUTH 5th STREET EXTENDED SPRINGFIELD, ILLINOIS
PROJECT UG 166140
SECTION 110X-75 B
SANGAMON COUNTY
STATION 8+72.70

ALFRED BEMECK & ASSOCIATES
CONSULTING ENGINEERS
10 S. WARMON AVE. CHICAGO, ILLINOIS

FILE NAME =	USER NAME = #USER#	DESIGNED -	REVISED -
#FILE#		DRAWN -	REVISED -
		CHECKED -	REVISED -
		DATE -	REVISED -

STATE OF ILLINOIS
DEPARTMENT OF TRANSPORTATION

084-0033 (FOR INFORMATION ONLY)	SCALE: _____	SHEET NO. _____ OF _____ SHEETS	STA. _____ TO STA. _____
---------------------------------	--------------	---------------------------------	--------------------------

F.A.P. RTE. 666	SECTION D-6 PAINTING 2008-	COUNTY SANGAMON	TOTAL SHEET NO. 13
	2012		8
CONTRACT NO. T2C48			