

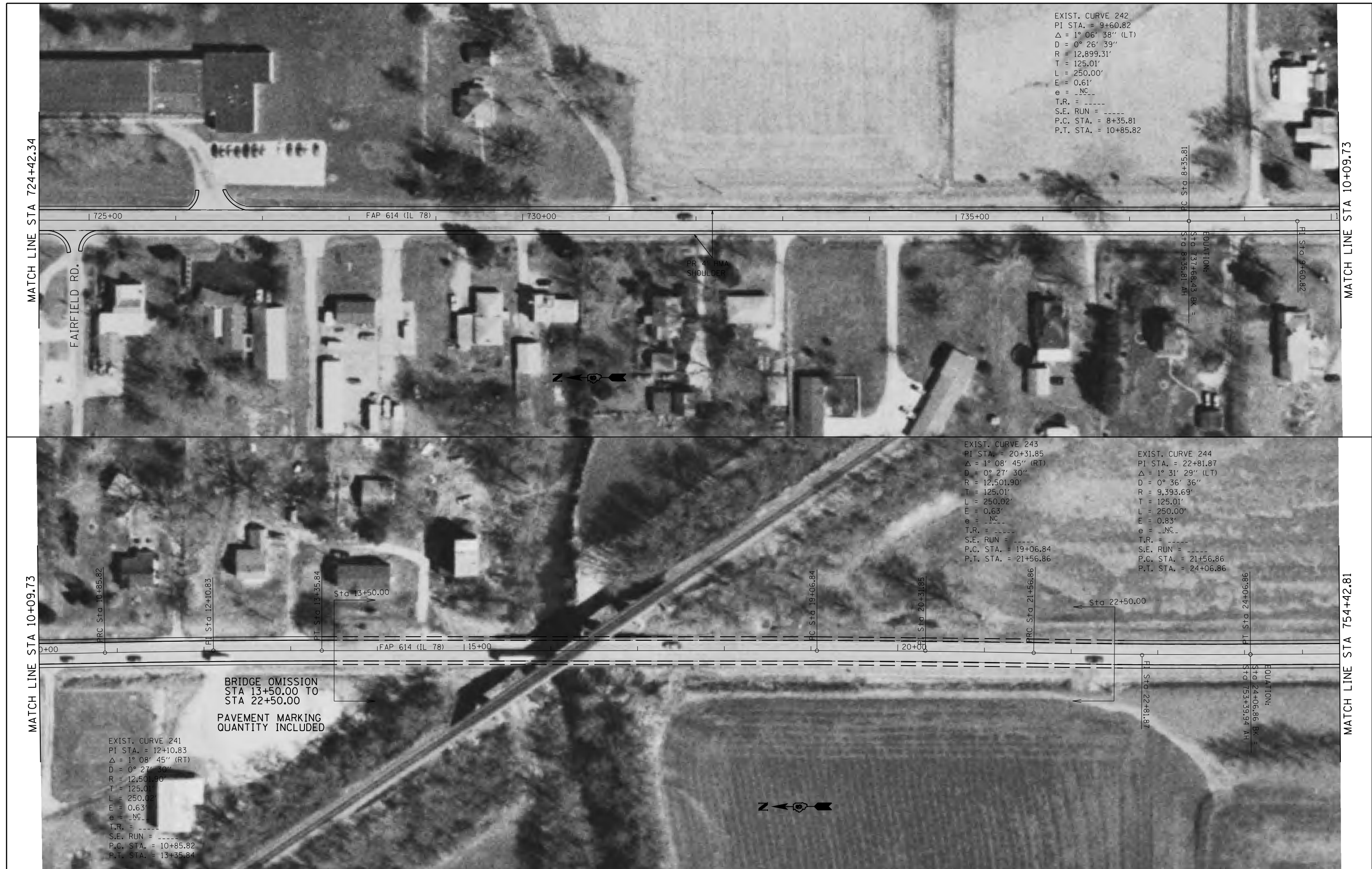
EXIST. CURVE 242  
 PI STA. = 9+60.82  
 $\Delta = 1^{\circ} 06' 38''$  (LT)  
 $D = 0^{\circ} 26' 39''$   
 $R = 12,899.31'$   
 $T = 125.01'$   
 $L = 250.00'$   
 $E = 0.61'$   
 $e = \text{NC}$   
 $T.R. = \text{-----}$   
 $S.E. \text{ RUN} = \text{-----}$   
 $P.C. \text{ STA.} = 8+35.81$   
 $P.T. \text{ STA.} = 10+85.82$

EXIST. CURVE 243  
 PI STA. = 20+31.85  
 $\Delta = 1^{\circ} 08' 45''$  (RT)  
 $D = 0^{\circ} 27' 30''$   
 $R = 12,501.90'$   
 $T = 125.01'$   
 $L = 250.02'$   
 $E = 0.63'$   
 $e = \text{NC}$   
 $T.R. = \text{-----}$   
 $S.E. \text{ RUN} = \text{-----}$   
 $P.C. \text{ STA.} = 19+06.84$   
 $P.T. \text{ STA.} = 21+56.86$

EXIST. CURVE 244  
 PI STA. = 22+81.87  
 $\Delta = 1^{\circ} 31' 29''$  (LT)  
 $D = 0^{\circ} 36' 36''$   
 $R = 9,393.69'$   
 $T = 125.01'$   
 $L = 250.00'$   
 $E = 0.83'$   
 $e = \text{NC}$   
 $T.R. = \text{-----}$   
 $S.E. \text{ RUN} = \text{-----}$   
 $P.C. \text{ STA.} = 21+56.86$   
 $P.T. \text{ STA.} = 24+06.86$

EXIST. CURVE 241  
 PI STA. = 12+10.83  
 $\Delta = 1^{\circ} 08' 45''$  (RT)  
 $D = 0^{\circ} 27' 30''$   
 $R = 12,501.90'$   
 $T = 125.01'$   
 $L = 250.02'$   
 $E = 0.63'$   
 $e = \text{NC}$   
 $T.R. = \text{-----}$   
 $S.E. \text{ RUN} = \text{-----}$   
 $P.C. \text{ STA.} = 10+85.82$   
 $P.T. \text{ STA.} = 13+35.84$

BRIDGE OMISSION  
 STA 13+50.00 TO  
 STA 22+50.00  
 PAVEMENT MARKING  
 QUANTITY INCLUDED



FILE NAME =	USER NAME = sparksgw	DESIGNED -	REVISED -	<b>STATE OF ILLINOIS DEPARTMENT OF TRANSPORTATION</b>	<b>PLAN SHEETS</b>				F.A.P. RTE.	SECTION	COUNTY	TOTAL SHEETS	SHEET NO.		
c:\pwwork\pwwork\sparksgw\10249905\0672E18-sht-plan.dgn		DRAWN -	REVISED -		SCALE:	SHEET NO.	OF	SHEETS	STA.	TO STA.	614	147RS-7, 148RS-4	MORGAN	14	11
		CHECKED -	REVISED -												
		DATE -	REVISED -												
	PLOT SCALE = 100.0000' / 1in.														
	PLOT DATE = Aug-19-2011 01:55:20PM														
											CONTRACT NO. 72E18				
											ILLINOIS FED. AID PROJECT				