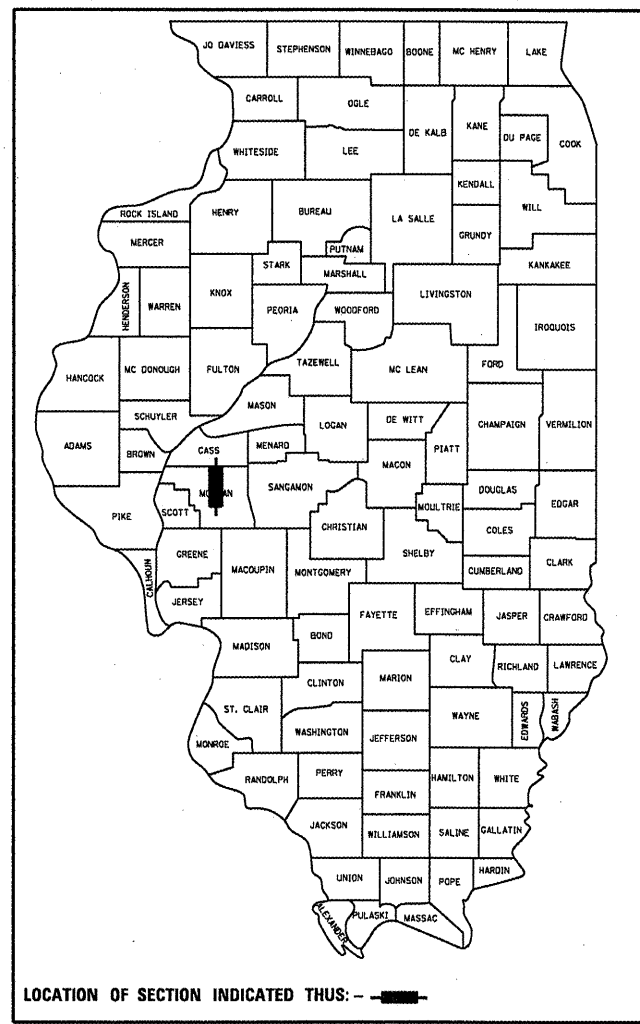


STATE OF ILLINOIS  
DEPARTMENT OF TRANSPORTATION  
DIVISION OF HIGHWAYS

F.A.P. RTE.	SECTION	COUNTY	TOTAL SHEETS	SHEET NO.
614	147RS-7, 148RS-4	MORGAN	14	1
ILLINOIS		CONTRACT NO. 72E18		

D-96-045-11

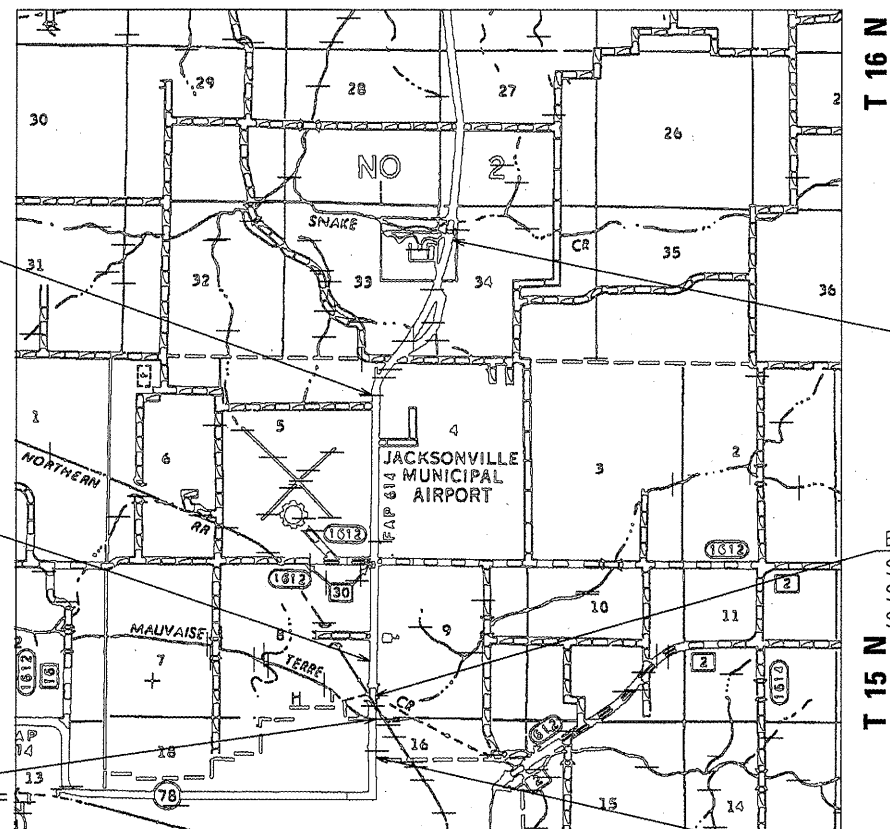


**PROPOSED  
HIGHWAY PLANS**

FAP ROUTE 614 (IL 78)  
SECTION 147RS-7, 148RS-4  
PROJECT HSIP-0614(033)  
TYPE of IMPROVEMENT  
SHOULDER RECONSTRUCTION  
MORGAN COUNTY

C-96-045-11

R 10 W



STA. EQUATION

STA. 643+18.70 (BK) =  
STA. 645+11.04 (AH)

BEGIN PROJECT  
STA. 575+46.50

STA. EQUATION

STA. 737+68.43 (BK) =  
STA. 8+35.81 (AH)

BRIDGE OMISSION  
SN: 069-0005  
STA. 13+50.00 TO  
STA. 22+50.00

STA. EQUATION

STA. 24+06.86 (BK) =  
STA. 753+39.94 (AH)

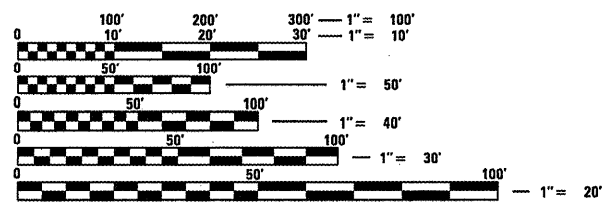
END PROJECT  
STA. 764+90.6

FOR INDEX OF SHEETS, SEE SHEET NO. 2

LIST OF STANDARDS

- 000001-06
- 701001-02
- 701006-03
- 701011-02
- 701301-04
- 701311-03
- 701326-04
- 701901-01
- 780001-02

- ADT: 2820 (2009)
- PV: 95.1%
- SU: 3.3%
- MU: 1.6%



FULL SIZE PLANS HAVE BEEN PREPARED USING STANDARD ENGINEERING SCALES. REDUCED SIZED PLANS WILL NOT CONFORM TO STANDARD SCALES. IN MAKING MEASUREMENTS ON REDUCED PLANS, THE ABOVE SCALES MAY BE USED.

J.U.L.I.E.  
JOINT UTILITY LOCATION INFORMATION FOR EXCAVATION  
1-800-892-0123  
OR 811

SENIOR TEAM ENGINEER: VINCE MADONIA (217) 785-9046  
TEAM ENGINEER: JULIET SHOULTZ (217) 785-2739

CONTRACT NO. 72E18

GROSS LENGTH = 18,751 FT. = 3.55 MILE  
NET LENGTH = 17,851 FT. = 3.38 MILE

STATE OF ILLINOIS  
DEPARTMENT OF TRANSPORTATION  
DIVISION OF HIGHWAYS

SUBMITTED August 13 20 11

Roger Z. Dmoch  
DEPUTY DIRECTOR OF HIGHWAYS, REGION ENGINEER

Oct 14 20 11  
Scott E. Stitt P.E. I.B.  
ENGINEER OF DESIGN AND ENVIRONMENT

Oct 14 20 11  
Christine M. Reed I.B.  
DIRECTOR OF HIGHWAYS, CHIEF ENGINEER

**PRINTED BY THE AUTHORITY  
OF THE STATE OF ILLINOIS**

**NOTES**

1. ANY REFERENCE TO A STANDARD IN THE PLANS SHALL BE INTERPRETED TO MEAN THE EDITION, AS INDICATED BY THE SUB-NUMBER LISTED IN THE INDEX OF SHEETS, OR THE COPY OF THE STANDARD INCLUDED IN THE PLANS
2. ACCESS MUST BE MAINTAINED TO ALL EXISTING PROPERTIES DURING CONSTRUCTION PER ARTICLE 107.09 UNLESS ARRANGEMENTS ARE MADE IN WRITING BY THE CONTRACTOR WITH THE PROPERTY OWNERS WITH A COPY TO THE ENGINEER FOR SHORT-TERM CLOSURES
3. THE DISTRICT BUREAU OF OPERATIONS SHALL BE NOTIFIED AT LEAST 14 DAYS PRIOR TO PLACEMENT OF FINAL PAVEMENT MARKINGS. PHONE: (217) 782-7314
4. THE EXISTING ROAD SIGNS THAT INTERFERE WITH CONSTRUCTION SHALL BE RELOCATED AS DIRECTED BY THE ENGINEER. AFTER THE CONSTRUCTION IS COMPLETE, THE CONTRACTOR SHALL REPLACE THE SIGNS AS DIRECTED BY THE ENGINEER. THIS WORK WILL NOT BE PAID FOR SEPARATELY, BUT CONSIDERED INCLUDED IN THE CONTRACT UNIT BID PRICES.
5. THE CONTRACTOR SHALL BE RESPONSIBLE FOR PROTECTING UTILITY PROPERTY FROM CONSTRUCTION OPERATIONS AS OUTLINED IN ARTICLE 107.31 OF THE STANDARD SPECIFICATIONS. THE JULIE NUMBER IS 800-892-0123.
6. SAW CUTS TO BE INCLUDED IN DRIVEWAY PAVEMENT REMOVAL PAY ITEM

**INDEX OF SHEETS**

- 1 COVER SHEET
- 2 GENERAL NOTES
- 3 SUMMARY OF QUANTITIES
- 4 SCHEDULE OF QUANTITIES
- 5 TYPICAL SECTIONS
- 6 - 12 PLAN SHEETS
- 13 RUMBLE STRIP DETAIL
- 14 SHOULDER WRAP AROUND DETAIL

**MIXTURE REQUIREMENTS**

Location(s):	FAP 614 (IL 78)	FAP 614 (IL 78)
Mixture Use(s):	HMA Shoulders (Bottom lifts)	HMA Shoulders (Top lift, 1.5" minimum)
PG:	PG 58-22	PG 64-22
Design Air Voids:	2% @ N=30	4% @ N=50
Mixture Composition:	BAM	IL 9.5 OR IL 12.5
Friction Aggregate:	N/A	MIX C

DISTRICT SIX	
EXAMINED <u>August 8</u> 20 <u>11</u> <i>Chris Walker</i>	
OPERATIONS ENGINEER	
EXAMINED <u>JULY 6</u> 20 <u>11</u> <i>Tommy Ford</i>	
PROJECT IMPLEMENTATION ENGINEER	
EXAMINED <u>July 5,</u> 20 <u>11</u> <i>2RML</i>	
PROGRAM DEVELOPMENT ENGINEER	

90% FED.  
10% STATE

CODE NO.	ITEM	UNIT	TOTAL	IL 78 HSIP SAFETY CONST CODE 0021
20200600	EXCAVATING AND GRADING EXISTING SHOULDER	UNIT	357	357
35800100	PREPARATION OF BASE	SQ YD	300	300
40800020	BITUMINOUS MATERIALS (PRIME COAT)	TON	0.11	0.11
40800030	AGGREGATE (PRIME COAT)	TON	0.60	0.60
40600982	HOT-MIX ASPHALT SURFACE REMOVAL - BUTT JOINT	SQ YD	300	300
40800050	INCIDENTAL HOT-MIX ASPHALT SURFACING	TON	59	59
44000200	DRIVEWAY PAVEMENT REMOVAL	SQ YD	10	10
48203029	HOT-MIX ASPHALT SHOULDERS, 8"	SQ YD	15,868	15,868
64200105	SHOULDER RUMBLE STRIP	FOOT	35,703	35,703
67100100	MOBILIZATION	LSUM	1	1
70100500	TRAFFIC CONTROL AND PROTECTION, STANDARD 701326	LSUM	1	1
70103815	TRAFFIC CONTROL SURVEILLANCE	CAL DA	10	10
* 78001120	PAINT PAVEMENT MARKING - LINE 5"	FOOT	49,630	49,630
Z0058670	GRADING AND SHAPING FORESLOPES	UNIT	20	20

\*SPECIALTY ITEM

FILE NAME =	USER NAME = sparksgw	DESIGNED -	REVISED -	<b>STATE OF ILLINOIS DEPARTMENT OF TRANSPORTATION</b>	<b>SUMMARY OF QUANTITIES</b>				F.A.P RTE.	SECTION	COUNTY	TOTAL SHEETS	SHEET NO.
c:\pwork\pwork\sparksgw\d0249905\0672E18-sh1-500.dgn	DRAWN -	REVISED -	614						147RS-7, 148RS-4	MORGAN	14	3	
PLOT SCALE = 40.0000' / in.	CHECKED -	REVISED -	CONTRACT NO. 72E18										
PLOT DATE = Aug-19-2011 01:57:37PM	DATE -	REVISED -	ILLINOIS FED. AID PROJECT										

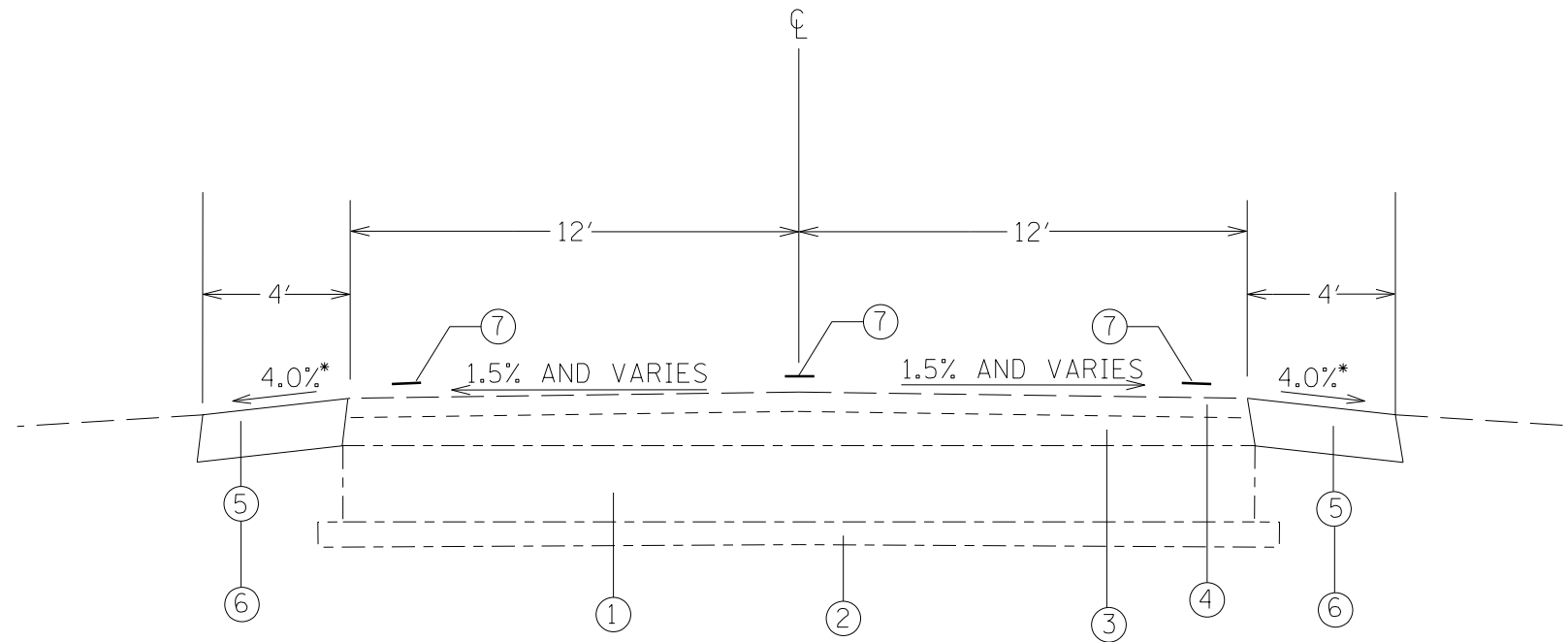
EXCAVATING & GRADING EXISTING SHOULDERS				
STATION RANGE			LENGTH	
			(FT)	(UNIT)
575+47	TO	643+19	13,544	135
<i>Sta. Eqn. STA.643+18.70(BK) = STA.645+11.04(AH)</i>				
645+11	TO	737+68	18,515	185
<i>Sta. Eqn. STA.737+68.43(BK) = STA.8+35.81AH)</i>				
8+36	TO	13+50	1,028	10
Bridge Omission STA.13+50.00 to STA.22+50.00				
22+50	TO	24+07	314	3
<i>Sta. Eqn. STA. 24+06.86(BK) = STA.753+39.94(AH)</i>				
753+40	TO	764+91	2,301	23
<b>TOTAL</b>			<b>35,703</b>	<b>357</b>

HMA SHOULDER, 8" (4' WIDE)					
STATION RANGE			WIDTH	LENGTH	8" HMA SHLDR
			(FT)	(FT)	(SQ YD)
575+47	TO	643+19	4	13,544	6020
<i>Sta. Eqn. STA.643+18.70(BK) = STA.645+11.04(AH)</i>					
645+11	TO	737+68	4	18,515	8229
<i>Sta. Eqn. STA.737+68.43(BK) = STA.8+35.81AH)</i>					
8+36	TO	13+50	4	1,028	457
Bridge Omission STA.13+50.00 to STA.22+50.00					
22+50	TO	24+07	4	314	139
<i>Sta. Eqn. STA. 24+06.86(BK) = STA.753+39.94(AH)</i>					
753+40	TO	764+91	4	2,301	1023
<b>TOTAL</b>				<b>15,868</b>	

ENTRANCE IMPROVEMENT SCHEDULE					
AREA	PREP. OF BASE	HMA SURF REM BUTT JOINT	BIT MATLS (P.C.)	AGG (P.C.)	INCIDENTAL BIT.SURF.
(SQ YD)	(SQ YD)	(SQ YD)	(TON)	(TON)	(TON)
300	300	300	0.11	0.60	59
<b>TOTAL</b>	<b>300</b>	<b>300</b>	<b>0.11</b>	<b>0.60</b>	<b>59</b>

SHOULDER RUMBLE STRIP			
STATION RANGE			LENGTH
			(FT)
575+47	TO	643+19	13,544
<i>Sta. Eqn. STA.643+18.70(BK) = STA.645+11.04(AH)</i>			
645+11	TO	737+68	18,515
<i>Sta. Eqn. STA.737+68.43(BK) = STA.8+35.81AH)</i>			
8+36	TO	13+50	1,028
Bridge Omission STA.13+50.00 to STA.22+50.00			
22+50	TO	24+07	314
<i>Sta. Eqn. STA.24+06.86(BK) = STA.753+39.94(AH)</i>			
753+40	TO	764+91	2,301
<b>TOTAL</b>			<b>35,703</b>

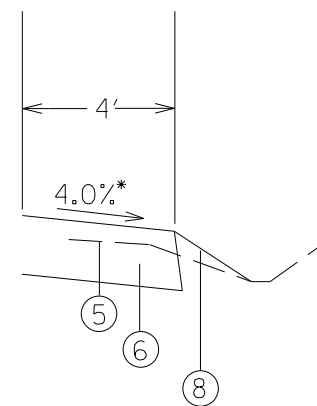
PAINT PAVEMENT MARKING LINE 5"			
STATION RANGE			LENGTH
			(FT)
575+47	TO	643+19	15,237
<i>Sta. Eqn. STA.643+18.70(BK) = STA.645+11.04(AH)</i>			
645+11	TO	737+68	20,828
<i>Sta. Eqn. STA.737+68.43(BK) = STA.8+35.81AH)</i>			
8+36	TO	24+07	3,310
<i>Sta. Eqn. STA.24+06.86(BK) = STA.753+39.94(AH)</i>			
753+40	TO	764+91	2,590
No passing zones - 1 way			3,490
No passing zones - 2 way			4,175
<b>TOTAL</b>			<b>49,630</b>



- LEGEND**
- ① EX PCC BASE COURSE 9"
  - ② EX SUB-BASE GRANULAR MATERIAL 4"
  - ③ EX HOT-MIX ASPHALT SURFACE (VAR. 3"-6 1/2")
  - ④ EX HOT-MIX ASPHALT SURFACE COURSE, MIX "C", N50 (1 1/2")
  - ⑤ EX AGG. SHOULDER, TYPE B
  - ⑥ PR HOT-MIX ASPHALT SHOULDERS 8"
  - ⑦ PR PAVEMENT MARKING LINE 5"
  - ⑧ PR GRADING AND SHAPING FORESLOPES

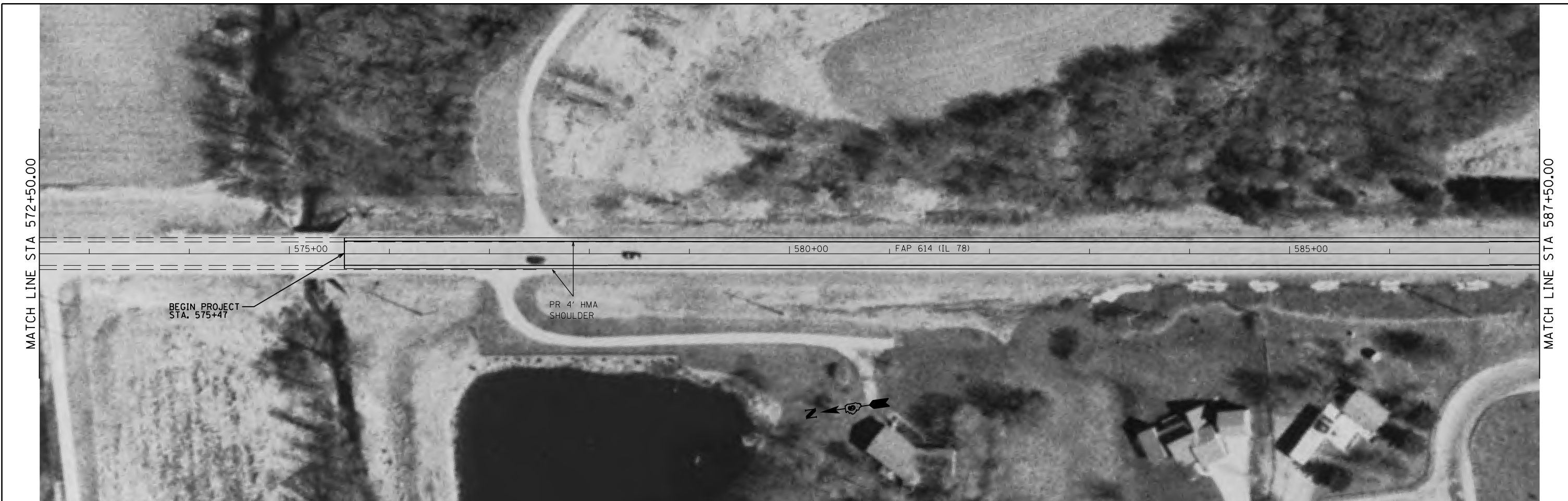
STA 575+46.50 to STA. 643+18.70  
 STATION EQN. STA. 643+18.70(BK) = STA. 645+11.04(AH)  
 STA. 645+11.04 TO STA.737+68.43  
 STATION EQN. STA. 737+68.43(BK) = STA. 8+35.81(AH)  
 STA. 8+35.81 TO STA. 13+50.00  
 BRIDGE OMISSION STA. 13+50.00 TO STA. 22+50.00  
 STA. 22+50.00 TO STA. 24+06.86  
 STATION EQN. STA. 24+06.86(BK) = STA. 753+39.94(AH)  
 STA. 753+39.94 TO STA. 764+90.6

\* When the superelevation rate exceeds 4.0%, the shoulder shall be sloped so that the algebraic difference between pavement and shoulder will not be greater than 8%.



At locations as designated by Engineer

FILE NAME =	USER NAME = sparksgw	DESIGNED -	REVISED -	<b>STATE OF ILLINOIS DEPARTMENT OF TRANSPORTATION</b>	<b>TYPICAL SECTION</b>			F.A.P. RTE.	SECTION	COUNTY	TOTAL SHEETS	SHEET NO.
ei:\pw\work\p\idot\sparksgw\10249905\0672E1B-sht-typical.dgn	DRAWN -	REVISED -	614					147RS-7, 148RS-4	MORGAN	14	5	
PLOT SCALE = 5.0000' / in.	CHECKED -	REVISED -	CONTRACT NO. 72E18									
PLOT DATE = Aug-19-2011 01:53:12PM	DATE -	REVISED -	SCALE:		SHEET NO.	OF SHEETS	STA.	TO STA.	ILLINOIS FED. AID PROJECT			



FILE NAME =	USER NAME = sparksgw	DESIGNED -	REVISED -	<b>STATE OF ILLINOIS DEPARTMENT OF TRANSPORTATION</b>	<b>PLAN SHEET</b>				F.A.P. RTE.	SECTION	COUNTY	TOTAL SHEETS	SHEET NO.
ei:\pwwork\pwwork\sparksgw\10249905\0672E18-sht-plan.dgn	2E18-sht-plan.dgn	DRAWN -	REVISED -		614	147RS-7, 148RS-4	MORGAN	14	6				
PLOT SCALE = 100.0000' / in.	CHECKED -	REVISED -	REVISED -		CONTRACT NO. 72E18								
PLOT DATE = Aug-19-2011 01:53:16PM	DATE -	REVISED -	REVISED -		ILLINOIS FED. AID PROJECT								
					SCALE:	SHEET NO.	OF SHEETS	STA.	TO STA.				

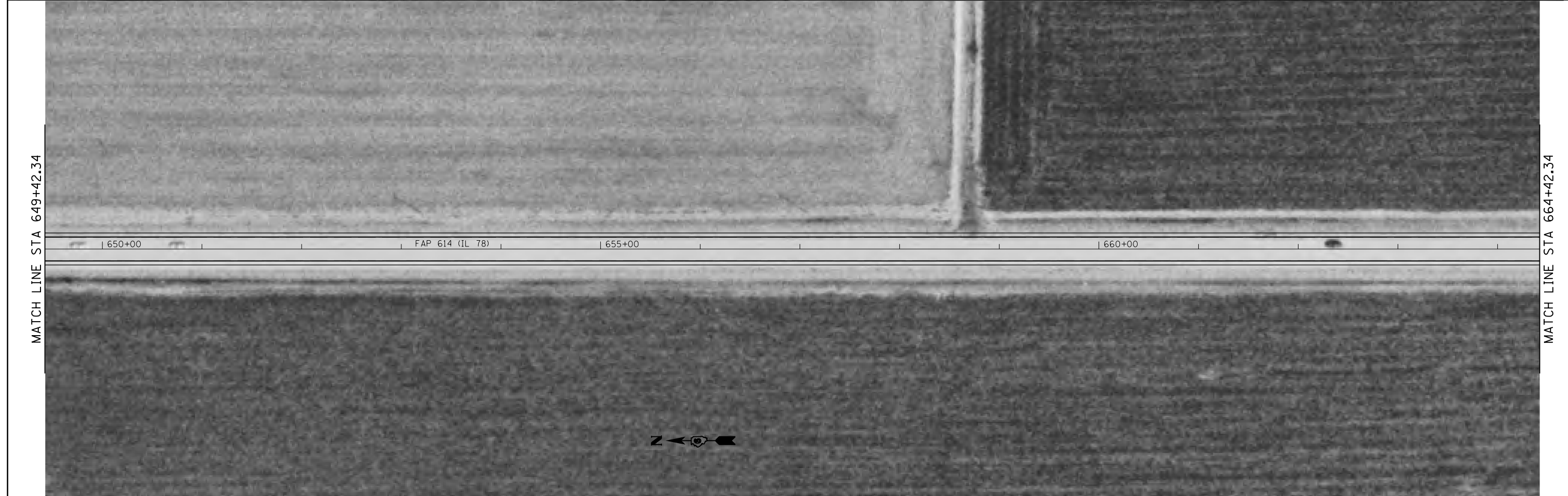


FILE NAME =	USER NAME = sparksgw	DESIGNED -	REVISED -
ci:\pw\work\p\idot\sparksgw\10249905\0672E18-sht-plan.dgn		DRAWN -	REVISED -
		CHECKED -	REVISED -
		DATE -	REVISED -

**STATE OF ILLINOIS  
DEPARTMENT OF TRANSPORTATION**

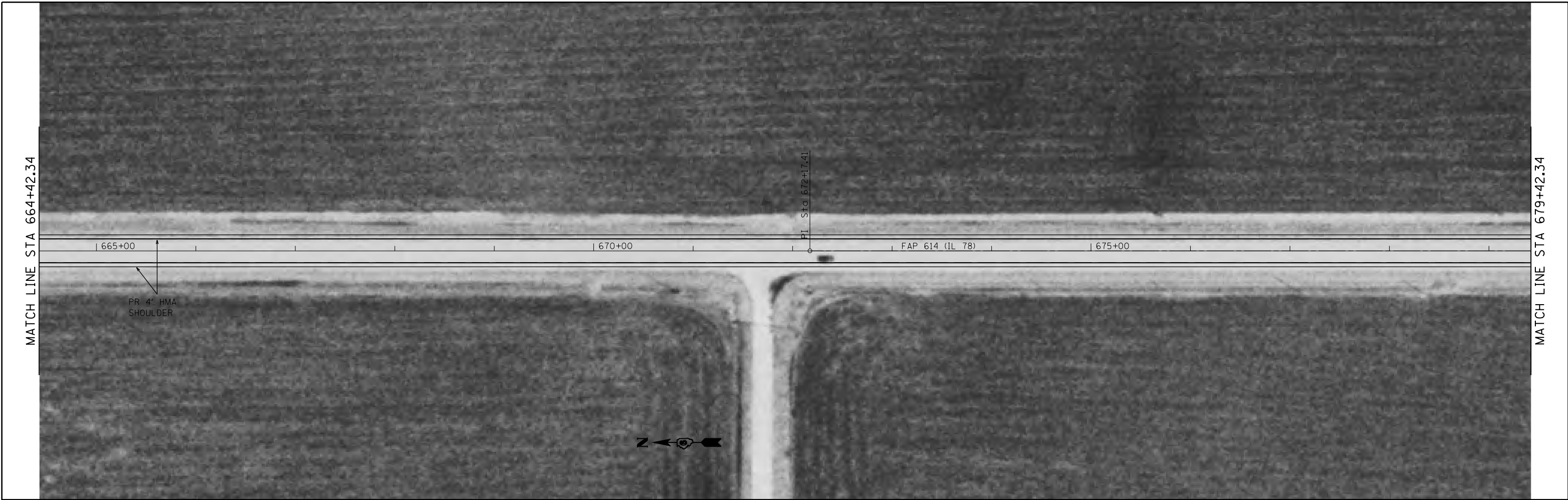
<b>PLAN SHEET</b>			
SCALE:	SHEET NO.	OF SHEETS	STA. TO STA.

F.A.P. RTE.	SECTION	COUNTY	TOTAL SHEETS	SHEET NO.
614	147RS-7, 148RS-4	MORGAN	14	7
CONTRACT NO. 72E18				
ILLINOIS FED. AID PROJECT				



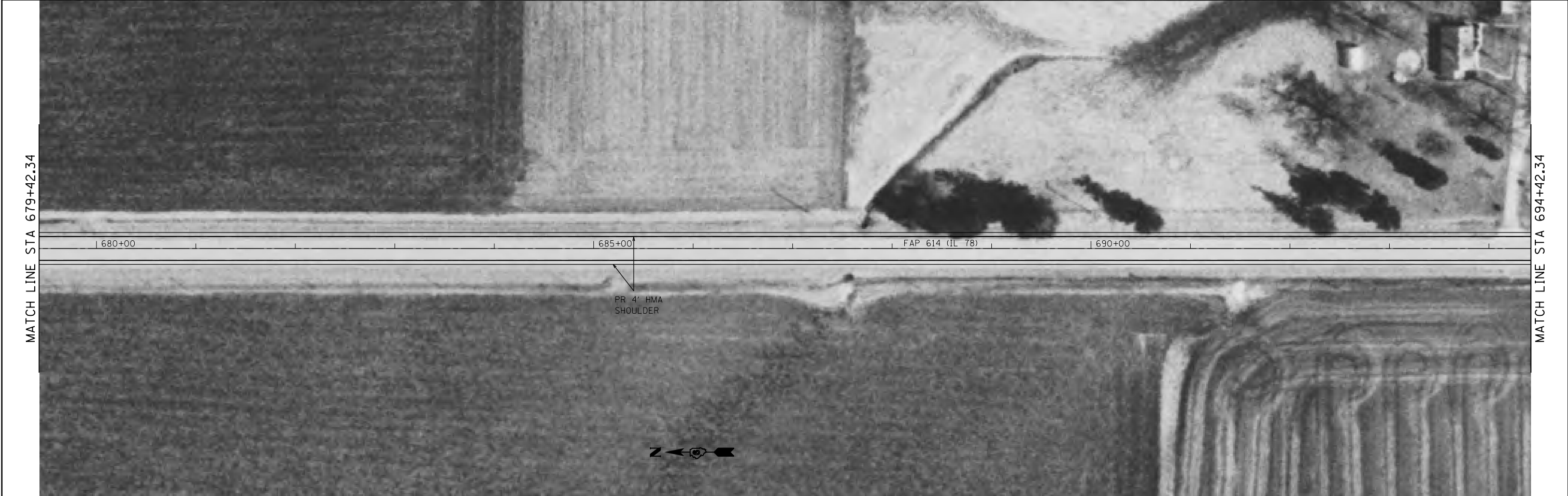
FILE NAME =	USER NAME = sparksgw	DESIGNED -	REVISED -	<b>STATE OF ILLINOIS DEPARTMENT OF TRANSPORTATION</b>	<b>PLAN SHEET</b>				F.A.P. RTE.	SECTION	COUNTY	TOTAL SHEETS	SHEET NO.
c:\pw\work\p\dot\sparksgw\10249905\0672E18-sht-plan.dgn		DRAWN -	REVISED -		614	147RS-7, 148RS-4	MORGAN	14	8				
	PLOT SCALE = 100.0000' / 1in.	CHECKED -	REVISED -		CONTRACT NO. 72E18								
	PLOT DATE = Aug-19-2011 01:54:12PM	DATE -	REVISED -		ILLINOIS FED. AID PROJECT								
					SCALE:	SHEET NO.	OF	SHEETS	STA.	TO	STA.		





MATCH LINE STA 664+42.34

MATCH LINE STA 679+42.34



MATCH LINE STA 679+42.34

MATCH LINE STA 694+42.34

FILE NAME =	USER NAME = sparksgw	DESIGNED -	REVISED -
ei:\pw\work\p\idot\sparksgw\0249905\0672E18-sht-plan.dgn		DRAWN -	REVISED -
	PLOT SCALE = 100.0000' / in.	CHECKED -	REVISED -
	PLOT DATE = Aug-19-2011 01:54:34PM	DATE -	REVISED -

**STATE OF ILLINOIS  
DEPARTMENT OF TRANSPORTATION**

<b>PLAN SHEETS</b>			
SCALE:	SHEET NO.	OF SHEETS	STA. TO STA.

F.A.P. RTE.	SECTION	COUNTY	TOTAL SHEETS	SHEET NO.
614	147RS-7, 148RS-4	MORGAN	14	9
CONTRACT NO. 72E18				
ILLINOIS FED. AID PROJECT				



FILE NAME = c:\pwwork\pwwork\sparksgw\10249905\0672E18-sht-plan.dgn	USER NAME = sparksgw	DESIGNED -	REVISED -	<b>STATE OF ILLINOIS DEPARTMENT OF TRANSPORTATION</b>	<b>PLAN SHEETS</b>				F.A.P. RTE. 614	SECTION 147RS-7, 148RS-4	COUNTY MORGAN	TOTAL SHEETS 14	SHEET NO. 10
	PLOT SCALE = 100.0000' / in.	CHECKED -	REVISED -		SCALE: SHEET NO. OF SHEETS STA. TO STA.				CONTRACT NO. 72E18				
PLOT DATE = Aug-19-2011 01:54:57PM	DATE -	REVISED -					ILLINOIS FED. AID PROJECT						

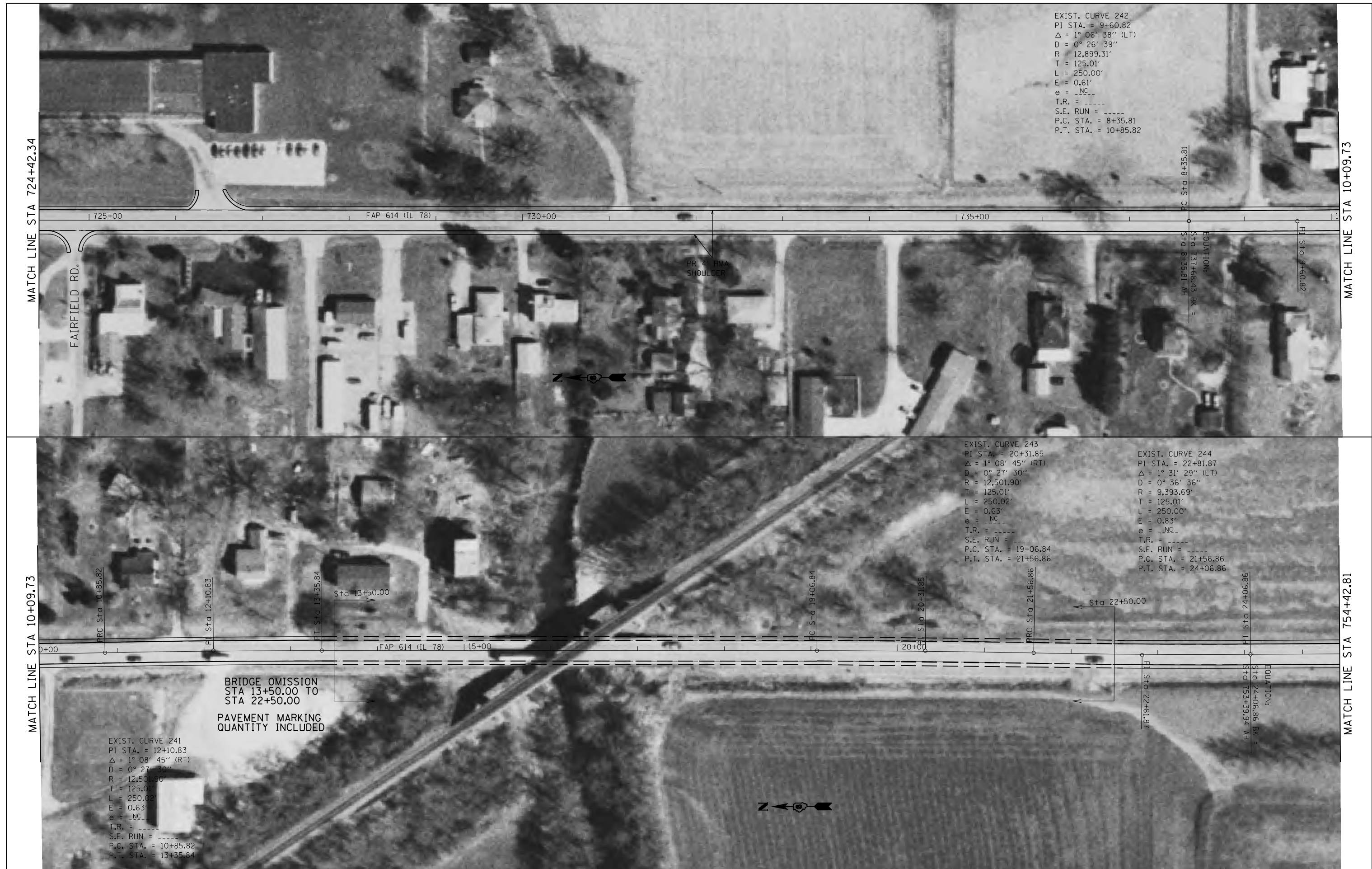
EXIST. CURVE 242  
 PI STA. = 9+60.82  
 $\Delta = 1^\circ 06' 38''$  (LT)  
 $D = 0^\circ 26' 39''$   
 $R = 12,899.31'$   
 $T = 125.01'$   
 $L = 250.00'$   
 $E = 0.61'$   
 $e = \text{NC}$   
 $T.R. = \text{-----}$   
 $S.E. \text{ RUN} = \text{-----}$   
 $P.C. \text{ STA.} = 8+35.81$   
 $P.T. \text{ STA.} = 10+85.82$

EXIST. CURVE 243  
 PI STA. = 20+31.85  
 $\Delta = 1^\circ 08' 45''$  (RT)  
 $D = 0^\circ 27' 30''$   
 $R = 12,501.90'$   
 $T = 125.01'$   
 $L = 250.02'$   
 $E = 0.63'$   
 $e = \text{NC}$   
 $T.R. = \text{-----}$   
 $S.E. \text{ RUN} = \text{-----}$   
 $P.C. \text{ STA.} = 19+06.84$   
 $P.T. \text{ STA.} = 21+56.86$

EXIST. CURVE 244  
 PI STA. = 22+81.87  
 $\Delta = 1^\circ 31' 29''$  (LT)  
 $D = 0^\circ 36' 36''$   
 $R = 9,393.69'$   
 $T = 125.01'$   
 $L = 250.00'$   
 $E = 0.83'$   
 $e = \text{NC}$   
 $T.R. = \text{-----}$   
 $S.E. \text{ RUN} = \text{-----}$   
 $P.C. \text{ STA.} = 21+56.86$   
 $P.T. \text{ STA.} = 24+06.86$

EXIST. CURVE 241  
 PI STA. = 12+10.83  
 $\Delta = 1^\circ 08' 45''$  (RT)  
 $D = 0^\circ 27' 30''$   
 $R = 12,501.90'$   
 $T = 125.01'$   
 $L = 250.02'$   
 $E = 0.63'$   
 $e = \text{NC}$   
 $T.R. = \text{-----}$   
 $S.E. \text{ RUN} = \text{-----}$   
 $P.C. \text{ STA.} = 10+85.82$   
 $P.T. \text{ STA.} = 13+35.84$

BRIDGE OMISSION  
 STA 13+50.00 TO  
 STA 22+50.00  
 PAVEMENT MARKING  
 QUANTITY INCLUDED



FILE NAME =	USER NAME = sparksgw	DESIGNED -	REVISED -	<b>STATE OF ILLINOIS DEPARTMENT OF TRANSPORTATION</b>	<b>PLAN SHEETS</b>				F.A.P. RTE.	SECTION	COUNTY	TOTAL SHEETS	SHEET NO.		
c:\pwwork\pwwork\sparksgw\10249905\0672E18-sht-plan.dgn		DRAWN -	REVISED -		SCALE:	SHEET NO.	OF	SHEETS	STA.	TO STA.	614	147RS-7, 148RS-4	MORGAN	14	11
		CHECKED -	REVISED -												
		DATE -	REVISED -												
	PLOT SCALE = 100.0000' / 1" =														
	PLOT DATE = Aug-19-2011 01:55:20PM														
											CONTRACT NO. 72E18				
											ILLINOIS FED. AID PROJECT				

EXIST. CURVE 257  
 PI STA. = 758+99.51  
 $\Delta = 0^\circ 46' 48''$  (LT)  
 $D = 0^\circ 06' 21''$   
 $R = 54,166.86'$   
 $T = 368.76'$   
 $L = 737.50'$   
 $E = 1.26'$   
 $\phi = \text{NC}$   
 T.R. = -----  
 S.E. RUN = -----  
 P.C. STA. = 755+30.76  
 P.T. STA. = 762+68.26

MATCH LINE STA 754+42.81

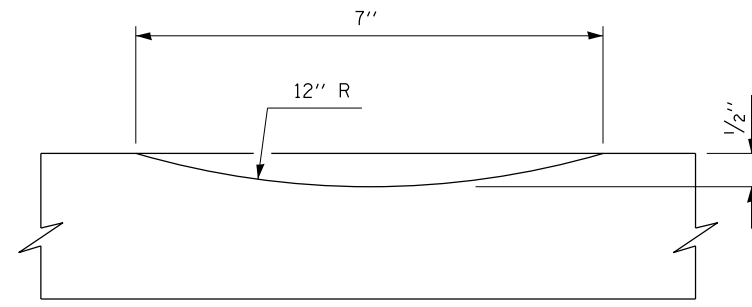
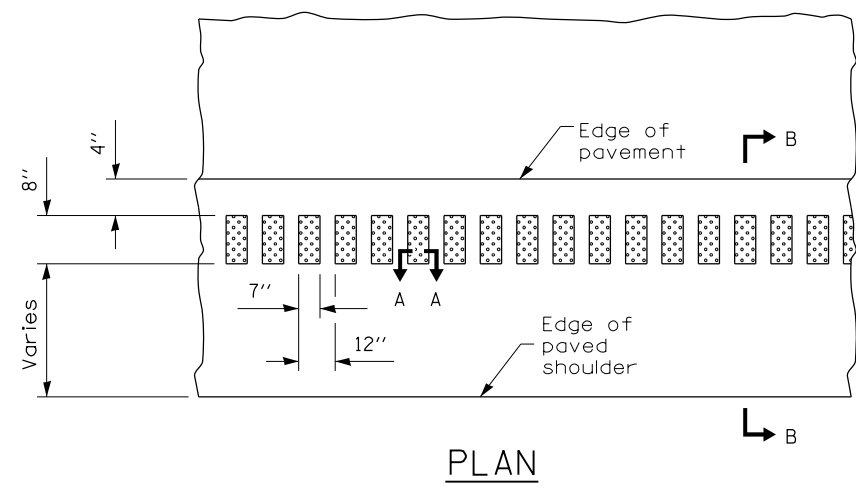


FILE NAME =	USER NAME = sparksgw	DESIGNED -	REVISED -
c:\pwork\pwork\sparksgw\10249905\0672E18-sht-plan.dgn		DRAWN -	REVISED -
	PLOT SCALE = 100.0000' / in.	CHECKED -	REVISED -
	PLOT DATE = Aug-19-2011 01:55:46PM	DATE -	REVISED -

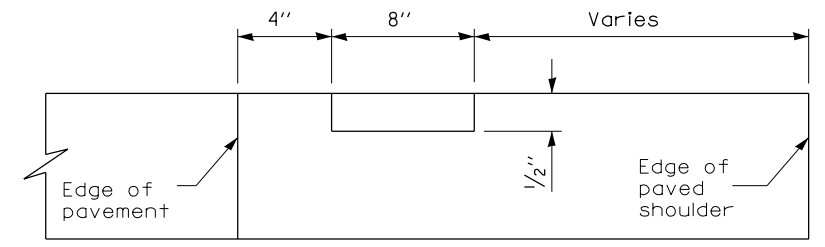
**STATE OF ILLINOIS  
 DEPARTMENT OF TRANSPORTATION**

<b>PLAN SHEETS</b>			
SCALE:	SHEET NO.	OF SHEETS	STA. TO STA.

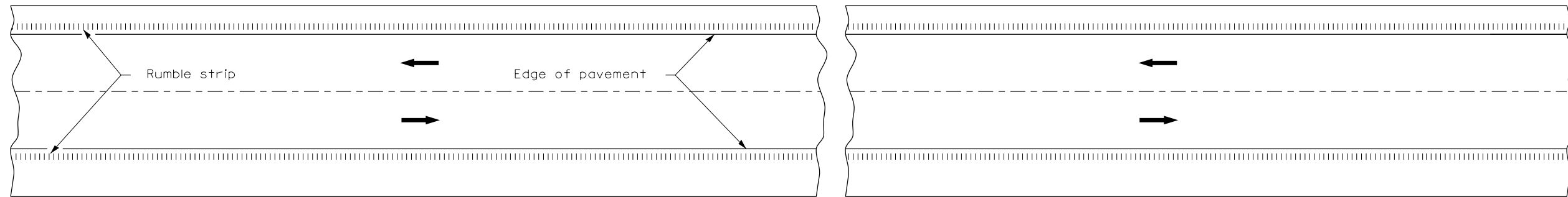
F.A.P. RTE.	SECTION	COUNTY	TOTAL SHEETS	SHEET NO.
614	147RS-7, 148RS-4	MORGAN	14	12
CONTRACT NO. 72E18				
ILLINOIS FED. AID PROJECT				



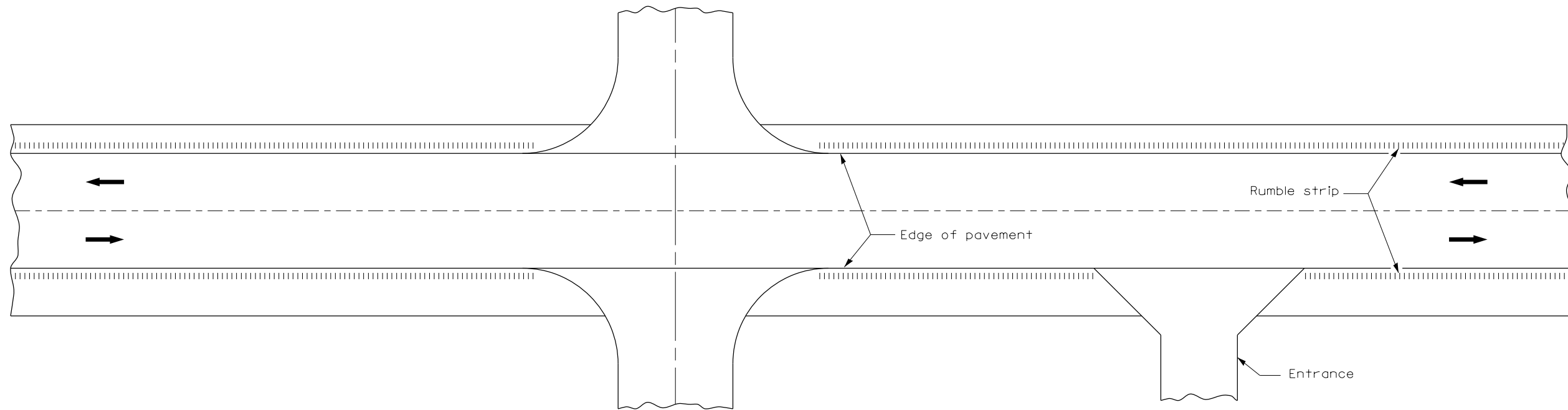
SECTION A-A



SECTION B-B

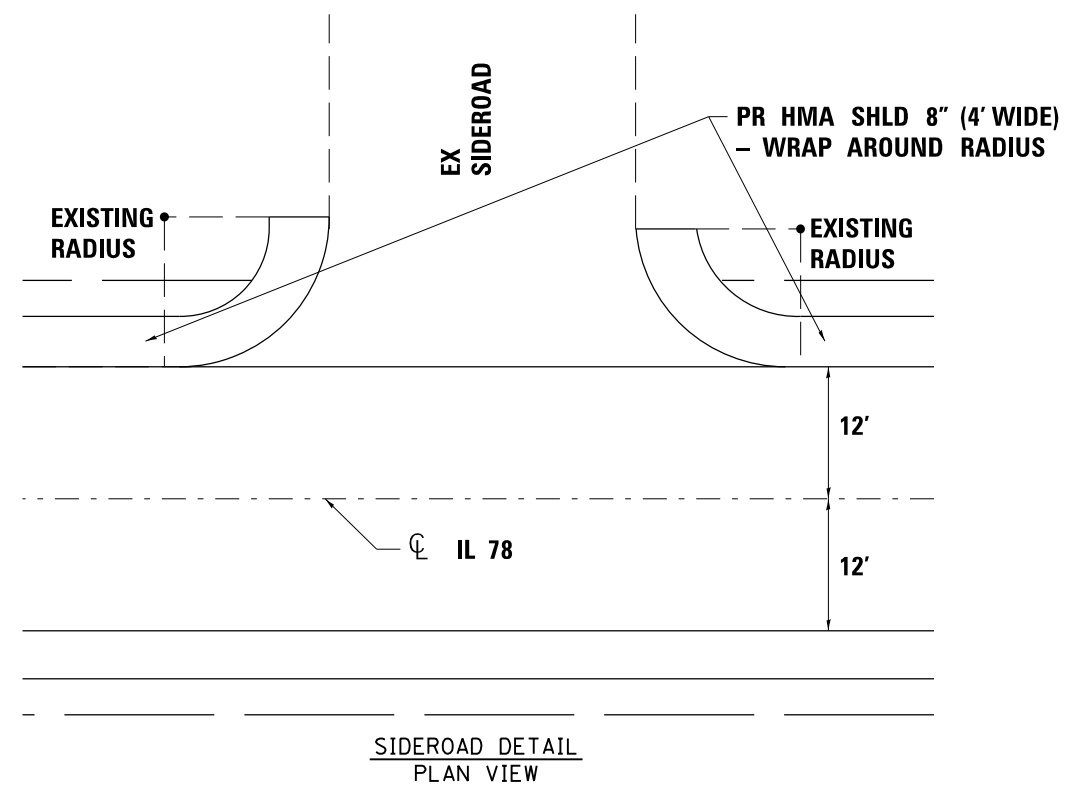
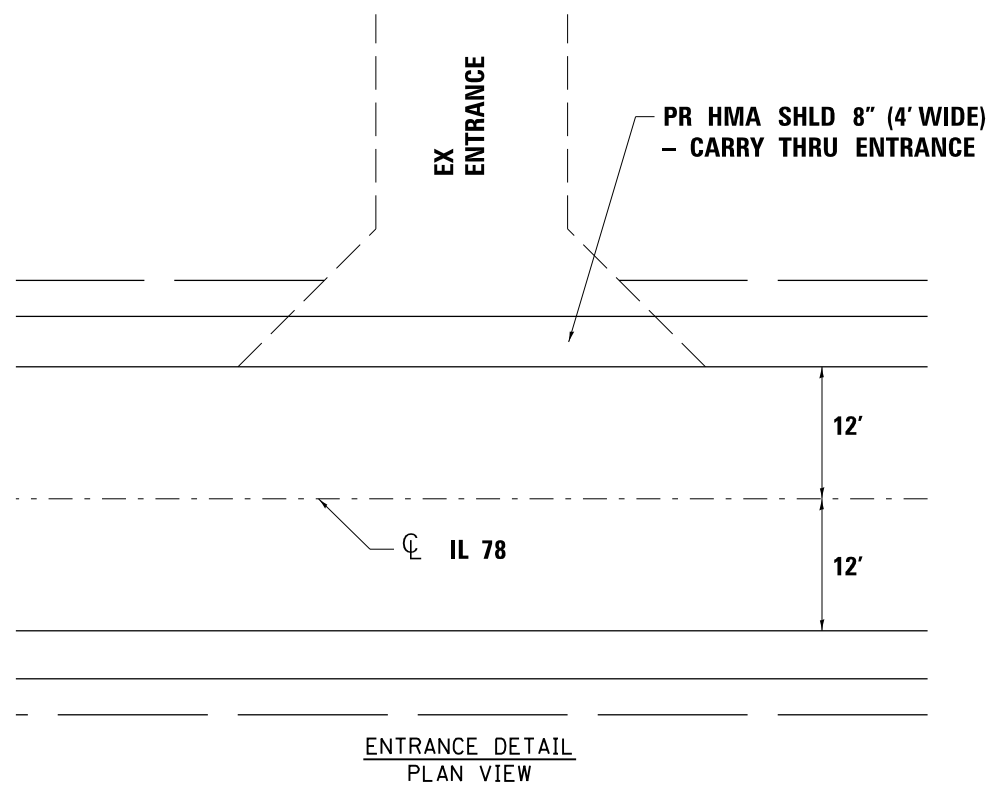


HALF PLAN  
TYPICAL APPLICATION FOR RURAL AREAS



HALF PLAN  
TYPICAL APPLICATION AT SIDEROADS AND ENTRANCES

FILE NAME = c:\pwork\work\pwork\sparksgw\0249905\0672E18-sht-details.dgn	USER NAME = sparksgw	DESIGNED -	REVISED -	<b>STATE OF ILLINOIS DEPARTMENT OF TRANSPORTATION</b>	<b>RUMBLE STRIP DETAIL</b>				F.A.P. RTE.	SECTION	COUNTY	TOTAL SHEETS	SHEET NO.
<b>RUMBLE.DGN</b>	PLOT SCALE = 40.0000' / in.	DRAWN -	REVISED -						614	147R5-7,	MORGAN	14	13
	PLOT DATE = Aug-19-2011 01:56:16PM	CHECKED -	REVISED -		SCALE:      SHEET NO.    OF    SHEETS    STA.            TO STA.				FED. ROAD DIST. NO.    ILLINOIS FED. AID PROJECT				
		DATE -	REVISED -						CONTRACT NO. 72E18				



FILE NAME =	USER NAME = sparksgw	DESIGNED -	REVISED -
ei:\pw\work\p\dot\sparksgw\10249905\0672E1B-sht-shldrdetail.dgn		DRAWN -	REVISED -
	PLOT SCALE = 6.4000' / in.	CHECKED -	REVISED -
	PLOT DATE = Aug-19-2011 01:56:19PM	DATE -	REVISED -

STATE OF ILLINOIS  
DEPARTMENT OF TRANSPORTATION

SHOULDER WRAP AROUND DETAIL

SCALE: SHEET NO. OF SHEETS STA. TO STA.

F.A.P. RTE.	SECTION	COUNTY	TOTAL SHEETS	SHEET NO.
614	147RS-7, 148RS-4	MORGAN	14	14
CONTRACT NO. 72E18				
ILLINOIS FED. AID PROJECT				