

STATE OF ILLINOIS  
 DEPARTMENT OF TRANSPORTATION  
 DIVISION OF HIGHWAYS

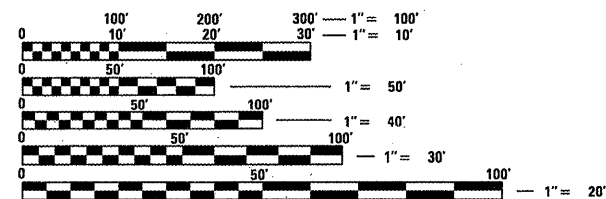
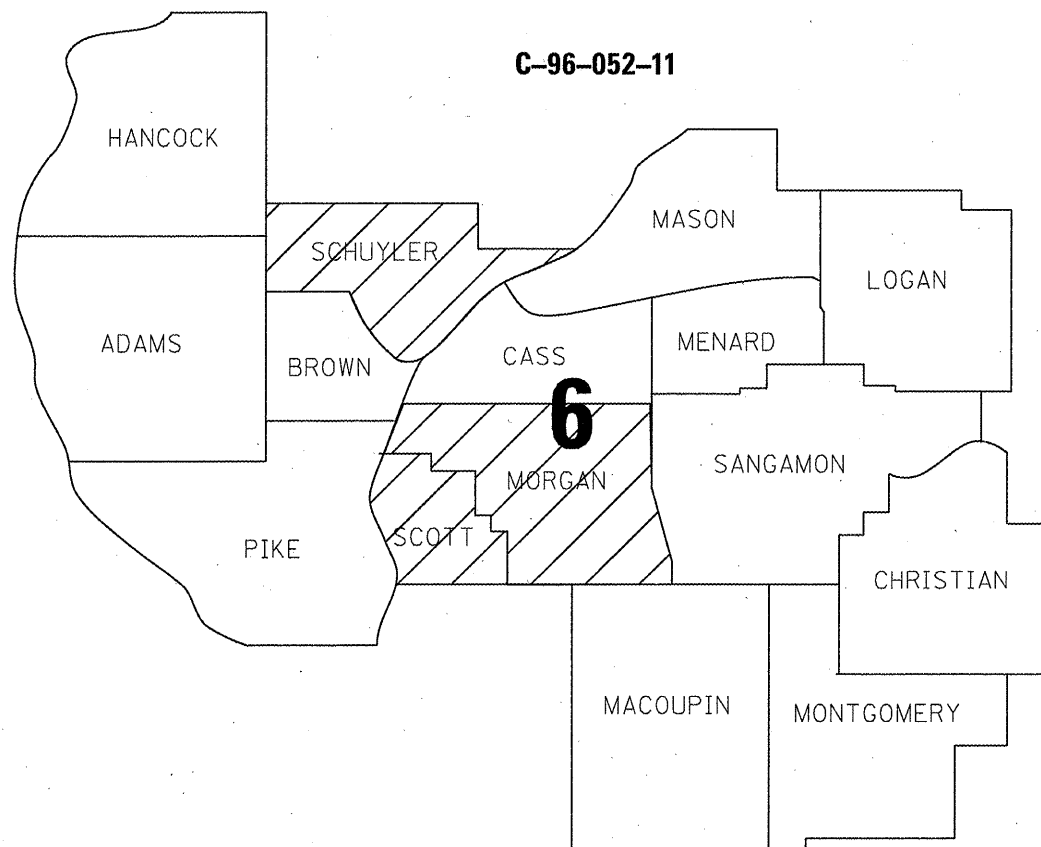
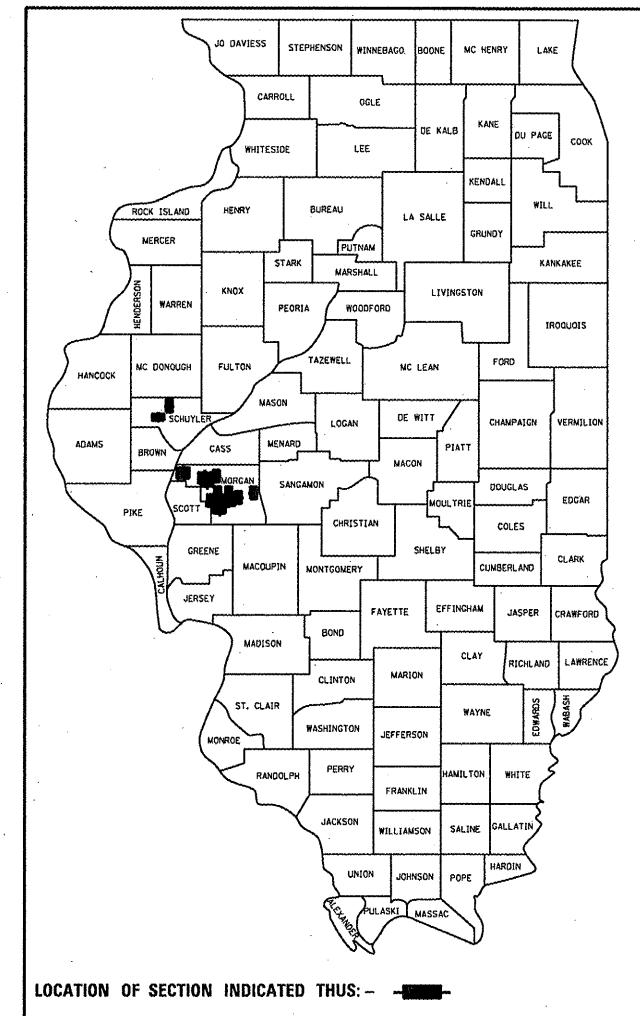
**PROPOSED  
 HIGHWAY PLANS**

VARIOUS ROUTES  
 SECTION D6 BDGE DECK SEALING 2011  
 SEALING 2011  
 VARIOUS COUNTIES  
 BRIDGE DECK SEALING

F.A. RTE.	SECTION	COUNTY	TOTAL SHEETS	SHEET NO.
VAR	*	**	10	1
ILLINOIS			CONTRACT NO. 72E24	

DISTRICT 6 BRIDGE DECK SEALING 2011  
 \*\* VARIOUS  
 D-96-052-11

FOR INDEX OF SHEETS, SEE SHEET NO. 2



FULL SIZE PLANS HAVE BEEN PREPARED USING STANDARD ENGINEERING SCALES. REDUCED SIZED PLANS WILL NOT CONFORM TO STANDARD SCALES. IN MAKING MEASUREMENTS ON REDUCED PLANS, THE ABOVE SCALES MAY BE USED.

J.U.L.I.E.  
 JOINT UTILITY LOCATION INFORMATION FOR EXCAVATION  
 1-800-892-0123

SENIOR TEAM ENGINEER: (217) 785-9046 VINCE MADONIA  
 TEAM ENGINEER: (217) 785-0597 VICTOR YOUNG

CONTRACT NO. 72E24

STATE OF ILLINOIS  
 DEPARTMENT OF TRANSPORTATION  
 DIVISION OF HIGHWAYS

SUBMITTED August 19 20 11  
Roger Z. Orsini  
 DEPUTY DIRECTOR OF HIGHWAYS, REGION ENGINEER

Oct 14 20 11  
Scott E. Stettin  
 acting ENGINEER OF DESIGN AND ENVIRONMENT

Oct 14 20 11  
Christine M. Reed  
 DIRECTOR OF HIGHWAYS, CHIEF ENGINEER

**PRINTED BY THE AUTHORITY  
 OF THE STATE OF ILLINOIS**