

F.A.S. RTE.	SECTION	COUNTY	TOTAL SHEETS	SHEET NO.
2582	(45)I-2	SCHUYLER	18	1
		ILLINOIS	CONTRACT NO. 72E37	

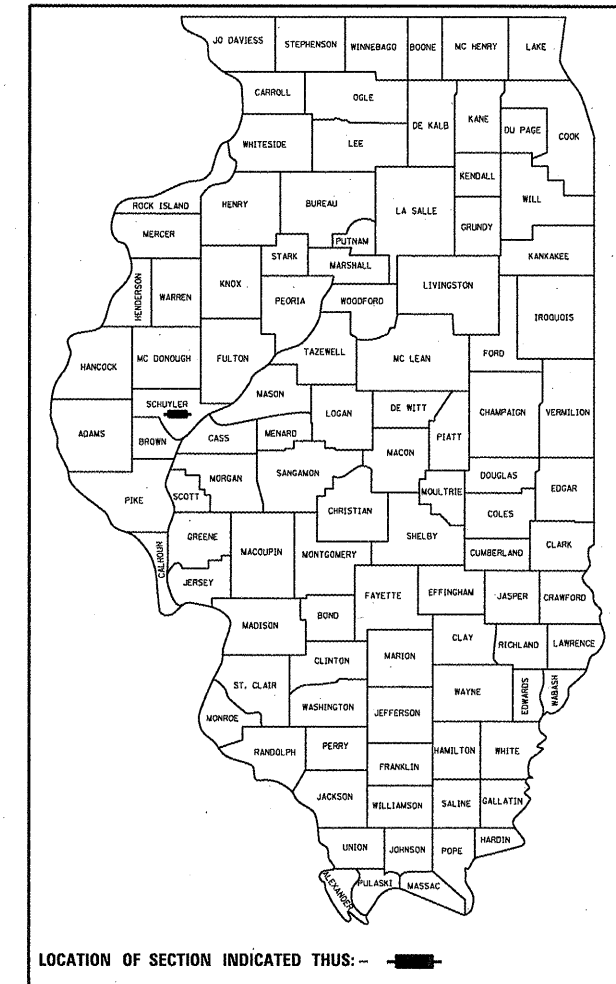
STATE OF ILLINOIS  
DEPARTMENT OF TRANSPORTATION  
DIVISION OF HIGHWAYS

# PROPOSED HIGHWAY PLANS

FAS ROUTE 2582 (OLD US 67 ADAMS ROAD)  
SECTION (45)I-2

RETAINING WALL  
SCHUYLER COUNTY

D-96-065-11



LOCATION OF SECTION INDICATED THUS: - [black rectangle] -

INDEX OF SHEETS

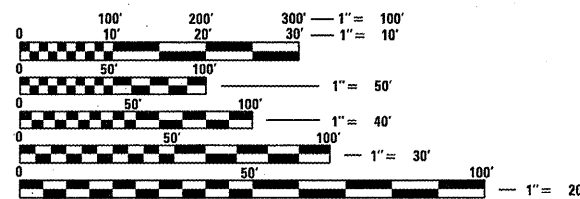
- 1 COVERSHEET
- 2 GENERAL NOTES, COMMITMENTS, AND SCHEDULES
- 3-4 SUMMARY OF QUANTITIES
- 5 CROSS TIES
- 6-10 RETAINING WALL PLANS
- 11 DETAILS
- 12-18 CROSS SECTIONS

HIGHWAY STANDARDS

STANDARD NO.

- 000001-06
- 701316-05
- 701901-01

A.D.T. = 3,450 (375)



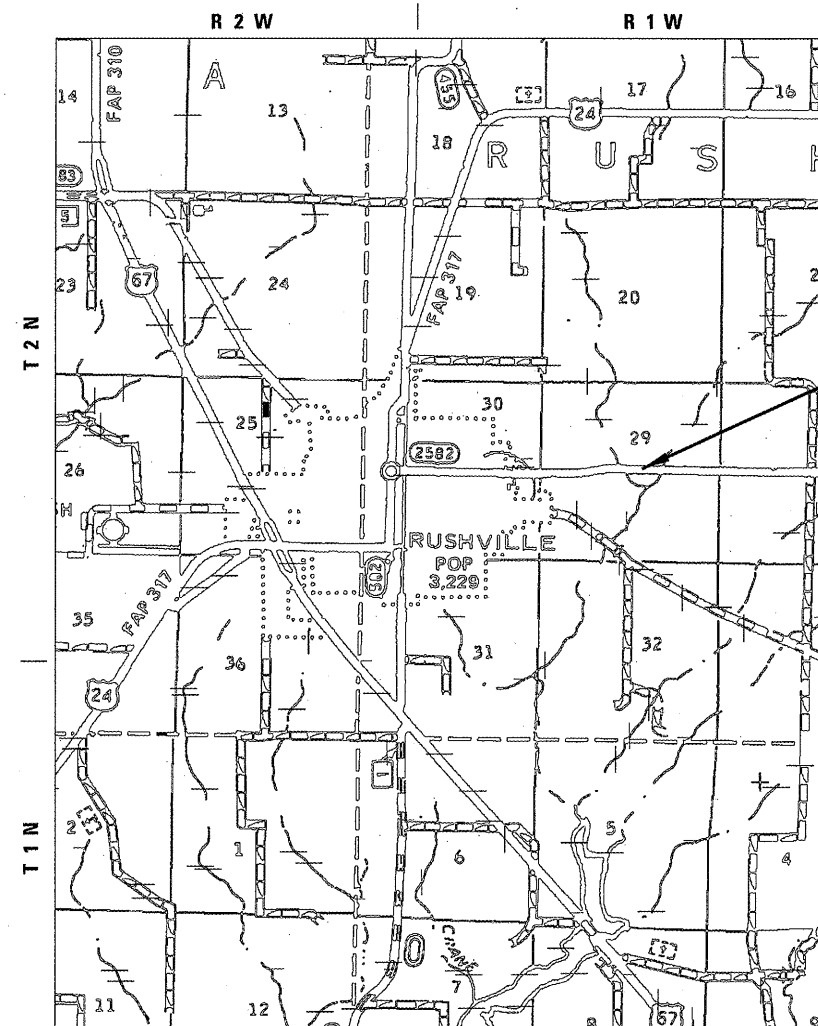
FULL SIZE PLANS HAVE BEEN PREPARED USING STANDARD ENGINEERING SCALES. REDUCED SIZED PLANS WILL NOT CONFORM TO STANDARD SCALES. IN MAKING MEASUREMENTS ON REDUCED PLANS, THE ABOVE SCALES MAY BE USED.

J.U.L.I.E.  
JOINT UTILITY LOCATION INFORMATION FOR EXCAVATION  
1-800-892-0123  
OR 811

SENIOR TEAM ENGINEER VINCE MADONIA 217-785-9046  
TEAM ENGINEER JAY EDWARDS 217-785-5321

CONTRACT NO. 72E37

C-96-065-11



S.N. 085-7900  
STA. 594 + 50.00

GROSS LENGTH = 100.00 FT. = 0.019 MILE

STATE OF ILLINOIS  
DEPARTMENT OF TRANSPORTATION  
DIVISION OF HIGHWAYS

SUBMITTED Sept 9 20 11  
Rep 2 Disket  
DEPUTY DIRECTOR OF HIGHWAYS, REGION ENGINEER

Oct 14 20 11  
Scott E. Stitt, P.E.  
acting ENGINEER OF DESIGN AND ENVIRONMENT

Oct 14 20 11  
Christine M. Reed  
DIRECTOR OF HIGHWAYS, CHIEF ENGINEER

PRINTED BY THE AUTHORITY  
OF THE STATE OF ILLINOIS