

STATE OF ILLINOIS
DEPARTMENT OF TRANSPORTATION
DIVISION OF HIGHWAYS

**PROPOSED
HIGHWAY PLANS**

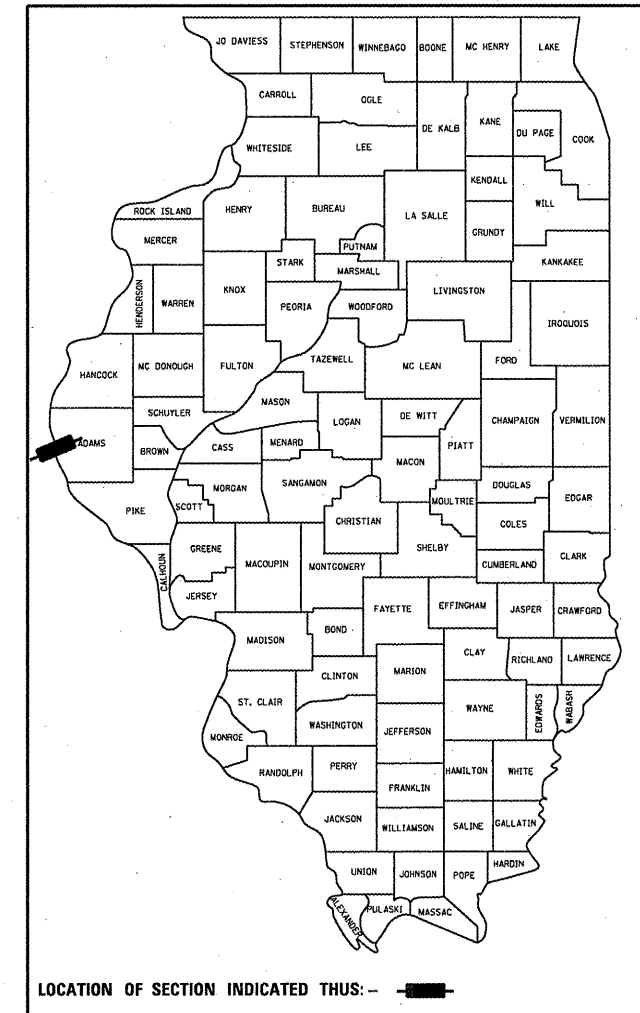
F.A.P. ROUTE 63 (US 24)
SECTION (1-ZB-1)I-6

**BRIDGE DECK SEALING
ADAMS COUNTY**

C-96-084-11

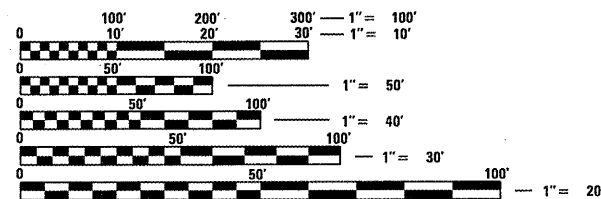
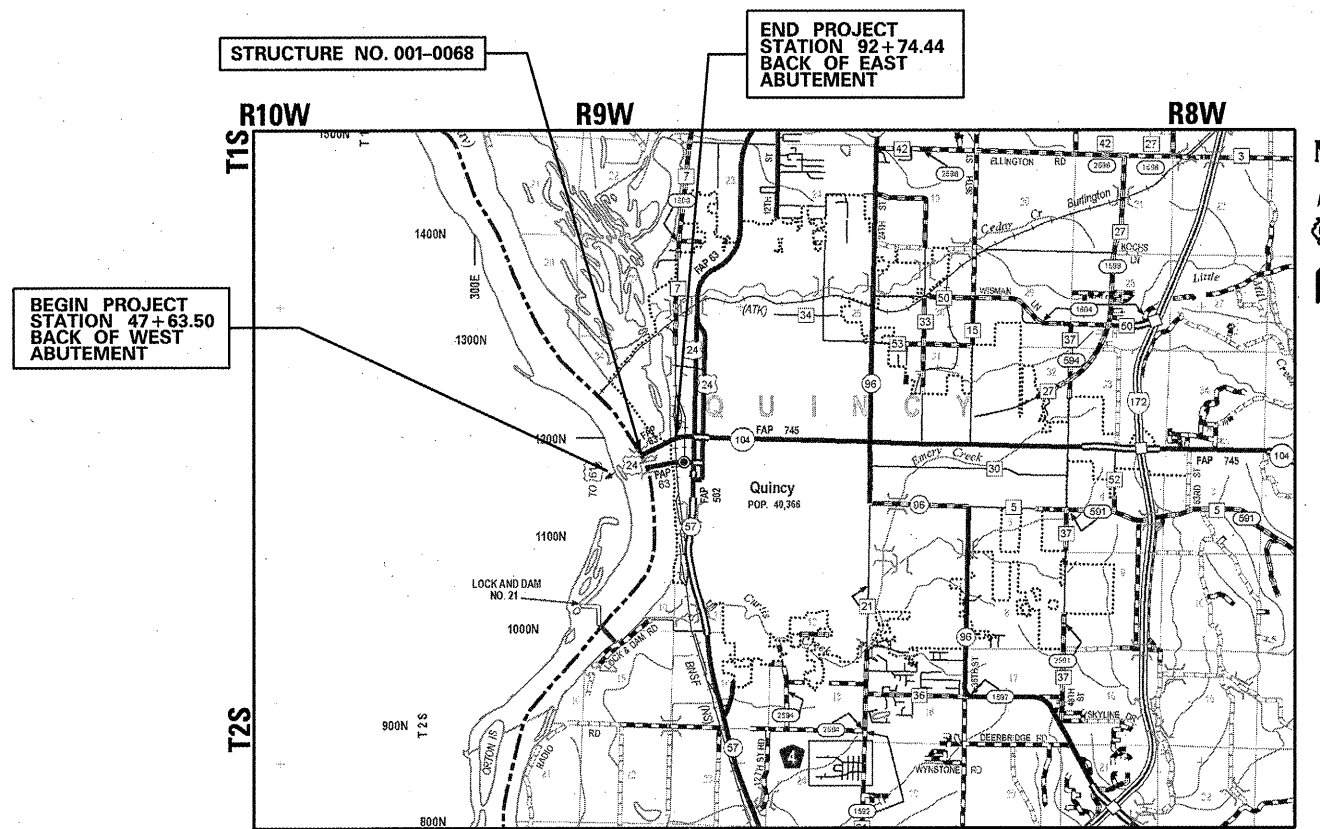
F.A.P. RTE.	SECTION	COUNTY	TOTAL SHEETS	SHEET NO.
63	(1-ZB-1)I-6	ADAMS	15	1
		ILLINOIS	CONTRACT NO. 72E52	

D-96-084-11



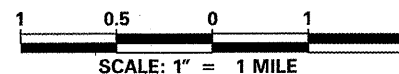
FOR INDEX OF SHEETS, SEE SHEET NO. 2

FAP 63 (U.S. 24)
FUNCTIONAL CLASS - OTHER PRINCIPAL ARTERIAL
ADT (2011) - 8000
SU - 6.25%
MU - 3.12%



FULL SIZE PLANS HAVE BEEN PREPARED USING STANDARD ENGINEERING SCALES. REDUCED SIZED PLANS WILL NOT CONFORM TO STANDARD SCALES. IN MAKING MEASUREMENTS ON REDUCED PLANS, THE ABOVE SCALES MAY BE USED.

J.U.L.I.E.
JOINT UTILITY LOCATION INFORMATION FOR EXCAVATION
1-800-892-0123
OR 811



GROSS LENGTH = 4508.3 FT. = 0.854 MILE
NET LENGTH = 4508.3 FT. = 0.854 MILE

SENIOR TEAM ENGINEER (217) 785-9046 VINCE MADONIA
TEAM ENGINEER (217) 785-0597 VICTOR YOUNG

CONTRACT NO. 72E52

STATE OF ILLINOIS
DEPARTMENT OF TRANSPORTATION
DIVISION OF HIGHWAYS

SUBMITTED August 17 20 11
Ryan Z. Dush
DEPUTY DIRECTOR OF HIGHWAYS, REGION ENGINEER

Oct 14 20 11
Scott E. Stitt, P.E.
acting ENGINEER OF DESIGN AND ENVIRONMENT

Oct 14 20 11
Christine M. Reed
DIRECTOR OF HIGHWAYS, CHIEF ENGINEER

**PRINTED BY THE AUTHORITY
OF THE STATE OF ILLINOIS**